

Esky ES-KF02

Esky Key Finder and Object Locator

Model: ES-KF02

INTRODUCTION

Thank you for purchasing the Esky Key Finder and Object Locator. This device is designed to help you quickly locate misplaced items such as keys, wallets, or even pets. With its wireless RF technology, you can easily find your belongings up to 39.9 meters away. Please read this manual carefully before using the product to ensure proper operation and to maximize its lifespan.

PACKAGE CONTENTS

Please check the package to ensure all items are present:

- 1 x Esky Transmitter (Remote Control)
- 4 x Esky Receivers (Color-coded)
- 4 x Key Rings
- 4 x CR2032, 3V Batteries (Pre-installed in receivers)
- 1 x User Manual



Image: All components of the Esky Key Finder system, including the transmitter, four color-coded receivers, key rings, and user manual, neatly arranged on a surface.

PRODUCT SPECIFICATIONS

Feature	Specification
Transmitter Size	105 x 46 x 13 mm (4.13 x 1.81 x 0.51 inches)
Receiver Size	50 x 36 x 11 mm (1.97 x 1.42 x 0.43 inches)
Frequency	433.92 MHz
Sound Volume	75-80 dB
Working Range	30-40 meters / 98-131 feet (open space)
Transmitter Battery	2 x 1.5V AAA (not included)
Receiver Battery	CR2032 (included)
Material	ABS Plastic

Color

Black (with color-coded buttons/receivers)

Multi-Purpose

The transmitter could be used as flashlight in darkness



Image: Detailed dimensions of the Eskey Key Finder transmitter and a single receiver, highlighting their compact size.

Ultran-long Tracking Distance and Loud Sounds



Image: Illustration showing the effective tracking distance of 98-131 feet and the sound volume of 75-80 dB produced by the receiver.

SETUP

1. Transmitter Battery Installation (AAA Batteries)

1. Locate the battery compartment on the back of the transmitter.
2. Open the battery cover.
3. Insert 2 x 1.5V AAA batteries, ensuring correct polarity (+/-).
4. Close the battery cover securely.

2. Receiver Battery Activation (CR2032 Batteries)

The CR2032 batteries are pre-installed in the receivers. A small plastic tab might be present to prevent discharge during shipping. If so:

1. Gently open the receiver casing using a small screwdriver or coin if necessary.
2. Remove the plastic insulation tab from the battery compartment.
3. Ensure the CR2032 battery is correctly seated with the positive (+) side facing up.
4. Close the receiver casing securely.

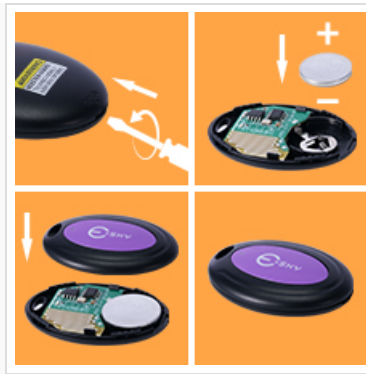


Image: A four-panel illustration demonstrating how to open the receiver, remove the old battery, insert a new CR2032 battery with correct polarity, and close the receiver.

3. Attaching Receivers to Items

Each receiver is color-coded to match a button on the transmitter. You can attach them using the provided key rings or adhesive pads:

- **Key Rings:** Attach the key ring to the small loop on the receiver, then attach it to your keys, pet collar, or other items.
- **Adhesive Pads:** For flat surfaces like remote controls or wallets, use the double-sided adhesive pads to secure the receiver.



Image: Visual guide showing two methods for attaching the Esky Key Finder receivers: using the included key rings for items like keys, and using adhesive pads for flat surfaces such as luggage or wallets.

OPERATING INSTRUCTIONS

Finding a Lost Item:

1. Identify the color of the receiver attached to the item you wish to find.
2. Press the corresponding color-coded button on the Esky transmitter.
3. The receiver will emit a loud beeping sound (75-80 dB), guiding you to the lost item.
4. Follow the sound to locate your item.



Image: A hand holding the Esky Key Finder transmitter, with an illustration showing a receiver attached to keys emitting a "Di Di" sound, indicating its location.

Using the LED Flashlight:

The transmitter is equipped with a built-in LED flashlight for convenience, especially in low-light conditions.

- Press the small flashlight button located on the top edge of the transmitter to turn the LED light on.
- Press the button again to turn the flashlight off.



Image: A close-up view of the Esky Key Finder transmitter, highlighting the integrated LED flashlight at its top edge, emitting light.

MAINTENANCE

- **Cleaning:** Wipe the devices with a soft, dry cloth. Do not use abrasive cleaners or solvents.
- **Battery Replacement:**
 - **Transmitter (AAA):** Replace batteries when the LED flashlight dims or the range decreases significantly.
 - **Receivers (CR2032):** Replace batteries when the beeping sound becomes faint or stops. Refer to the "Receiver Battery Activation" section for replacement steps.
- **Storage:** Store the key finder in a cool, dry place when not in use for extended periods.

TROUBLESHOOTING

Problem	Possible Cause	Solution
Receiver does not beep.	<ul style="list-style-type: none">◦ Dead or low receiver battery.◦ Plastic insulation tab still in place (new receivers).◦ Out of range.◦ Interference.	<ul style="list-style-type: none">◦ Replace CR2032 battery.◦ Remove plastic tab.◦ Move closer to the receiver.◦ Move away from large metal objects or strong electronic devices.
Transmitter LED flashlight is dim or not working.	<ul style="list-style-type: none">◦ Dead or low transmitter batteries.	<ul style="list-style-type: none">◦ Replace AAA batteries in the transmitter.
Reduced working range.	<ul style="list-style-type: none">◦ Low batteries in transmitter or receiver.◦ Obstructions (walls, furniture).◦ Environmental interference.	<ul style="list-style-type: none">◦ Replace batteries.◦ Try to minimize obstructions between transmitter and receiver.◦ Move to a different location.

SAFETY INFORMATION




- Do not expose the device to extreme temperatures, direct sunlight, or high humidity.
- Keep out of reach of small children and pets to prevent accidental ingestion of small parts or batteries.
- Dispose of used batteries according to local regulations. Do not dispose of batteries in fire.
- Do not attempt to disassemble or modify the device, as this will void the warranty and may cause damage.

WARRANTY AND SUPPORT

Esky products come with a standard manufacturer's warranty. For detailed warranty information, technical support, or any questions regarding your Esky Key Finder and Object Locator, please contact Esky customer service through the retailer's platform or the official Esky website. Please have your model number (ES-KF02) and purchase details ready when contacting support. For more information, visit: www.esky.com

© 2025 Esky. All rights reserved.

Related Documents - ES-KF02

	<p>Esky Remote Key Finder ES-KF02 Instructions</p> <p>User guide for the Esky Remote Key Finder (Model: ES-KF02), detailing its introduction, product diagrams, battery installation for both transmitter and receivers, operation instructions, specifications, and FCC statement.</p>
	<p>Esky KF06A Key Finder User Manual and Instructions</p> <p>User manual for the Esky KF06A Key Finder, a wireless item locator system. This guide details how to set up and operate the device, including battery installation for the transmitter and receivers, specifications, and FCC compliance information. Find lost keys, remotes, and other items with this easy-to-use RF locator.</p>
	<p>ESKY EYAS II Mini RC Aircraft User Manual</p> <p>Comprehensive user manual for the ESKY EYAS II Mini RC aircraft, covering specifications, assembly, pre-flight checks, flying, troubleshooting, and transmitter details.</p>



Solar Hand Crank Radio

Model HN-28
Manufacturer Model HN-28

www.esky.com

1

[Esky HN-28 Solar Hand Crank Radio User Manual - Emergency Weather Radio with Flashlight](#)

Comprehensive user manual for the Esky HN-28 Solar Hand Crank Radio. Learn about its features, operation, charging methods (USB, solar, hand crank), and maintenance for this versatile emergency weather radio with flashlight and power bank capabilities.