

**Bose 741158-0010**

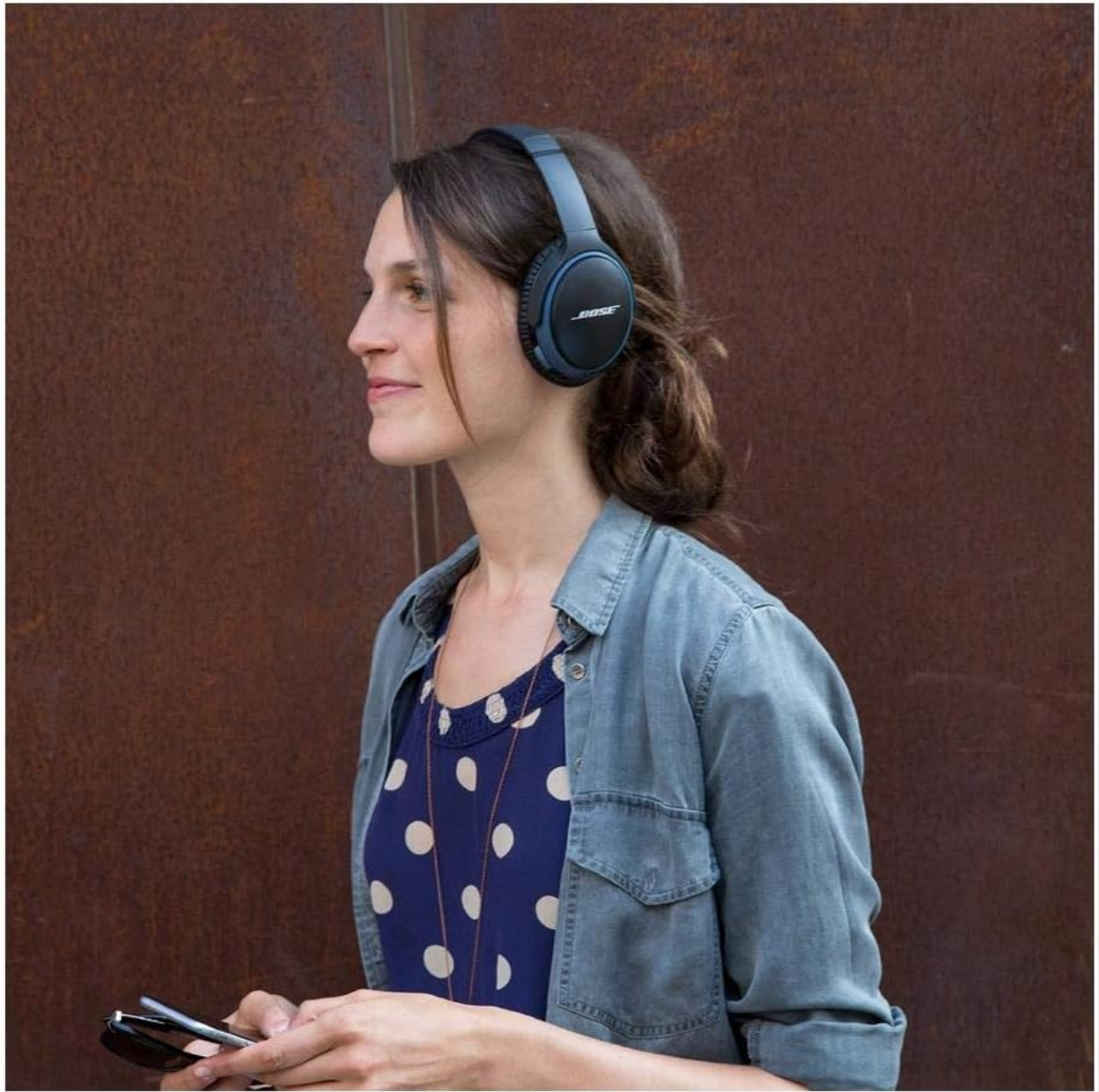
# Bose SoundLink Around Ear Wireless Headphones II - User Manual

Model: 741158-0010

## INTRODUCTION

---

Welcome to the user manual for your Bose SoundLink Around Ear Wireless Headphones II. These headphones are designed to provide a high-quality audio experience with the convenience of wireless connectivity. This manual will guide you through the setup, operation, maintenance, and troubleshooting of your device.



*Image: Bose SoundLink Around Ear Wireless Headphones II in black, worn by a woman listening to music.*

## WHAT'S IN THE BOX

---

- Bose SoundLink Around Ear Wireless Headphones II
- USB Charging Cable
- Backup Audio Cable
- Hard Carrying Case



*Image: Bose SoundLink Around Ear Wireless Headphones II, USB charging cable, backup audio cable, and hard carrying case laid out.*

## SETUP

---

### Charging the Headphones

1. Connect the provided USB charging cable to the micro-USB port on the headphones.
2. Plug the other end of the USB cable into a USB wall charger or a computer's USB port.
3. A full charge takes approximately 3 hours. A 15-minute quick charge provides up to 2 hours of playtime.

### Pairing with a Bluetooth Device

1. Slide the Power/Bluetooth switch to the 'On' position. The Bluetooth indicator light will blink blue.
2. On your mobile device, go to the Bluetooth settings and ensure Bluetooth is enabled.
3. For NFC-enabled devices, simply tap the right ear cup of the headphones to your device to initiate pairing.
4. For other devices, select "Bose SoundLink AE II" from the list of available Bluetooth devices.
5. A voice prompt will confirm when the headphones are successfully connected and will announce the battery level.

*Video: An official product video demonstrating the features and usage of the Bose SoundLink Around Ear Wireless Headphones II.*

## OPERATING THE HEADPHONES

---

### Controls and Functions

The headphones feature intuitive controls located on the right ear cup for easy management of your audio and calls.

- **Multi-function Button:** The large center button can be used to play/pause music, answer/end calls, and activate your device's voice assistant.
- **Volume Buttons:** Use the '+' and '-' buttons to adjust the listening volume.
- **Voice Prompts:** The headphones provide helpful voice prompts for battery status, connection status, and caller ID.

## Multi-Device Connectivity

The SoundLink Around Ear Wireless Headphones II can connect to two Bluetooth devices simultaneously, allowing for seamless switching between them. For example, you can watch a video on a tablet and automatically switch to your smartphone to answer an incoming call.



*Image: Close-up of the right ear cup of the Bose SoundLink Around Ear Wireless Headphones II, showing the control buttons and charging port.*

## COMFORT AND DESIGN

---

Designed for extended listening sessions, these headphones are lightweight and feature soft, plush ear cushions that provide a comfortable fit around your ears. The headband is adjustable to accommodate various head sizes, ensuring a secure yet gentle fit.



*Image: Bose SoundLink Around Ear Wireless Headphones II from the top, highlighting the adjustable headband and ear cups.*

## SOUND QUALITY AND MICROPHONE

---

Experience deep, immersive sound across all volume levels, enhanced by improved equalization. The advanced dual-microphone system is engineered to reject noise and wind, ensuring your voice is heard clearly during calls. The enhanced sidetone feature makes your own voice sound more natural during conversations.



## BATTERY LIFE

The rechargeable lithium-ion battery provides up to 15 hours of playtime on a single charge. A quick 15-minute charge can provide up to 2 hours of listening time, making them ideal for on-the-go use.

## PORTABILITY AND PROTECTION

The headphones feature a foldable design, allowing them to be compactly stored in the included hard carrying case. This case provides excellent protection, ensuring the headphones remain in good condition during travel and storage.

## MAINTENANCE

### Cleaning

- Use a soft, dry cloth to clean the surfaces of the headphones.
- Avoid using liquids, sprays, or harsh chemicals, as these may damage the components.

### Storage

- When not in use, store the headphones in their provided hard carrying case to protect them from dust, scratches, and impacts.
- Avoid storing in extreme temperatures or high humidity.

## TROUBLESHOOTING

- **Bluetooth Connectivity Issues:** If you experience difficulty connecting, turn off the Bluetooth function on your mobile device for a few minutes, then turn it back on and attempt to pair again.
- **Sound Delay:** If you notice a slight audio/video synchronization delay, try turning the headphones off and then back on.
- **Headphone Overheating:** During prolonged use, if the headphones feel warm, remove them and allow them to cool down before continuing use.

## SPECIFICATIONS

Feature	Specification
Model Name	SOUNDLINK AE WIRELESS HP II B
Connectivity Technology	Bluetooth, Wired
Wireless Communication Technology	Bluetooth
Battery Life	15 Hours
Charging Time	3 Hours
Bluetooth Range	30 Feet (9 meters)

Item Weight	6.88 ounces
Product Dimensions	1.5 x 6 x 7.5 inches
Ear Placement	Over Ear
Control Type	Touch, Voice Control
Included Components	SoundLink around-ear wireless headphones II, USB charging cable, Backup audio cable, Carry case

## WARRANTY & SUPPORT

---

For detailed warranty information, product registration, or technical support, please visit the official Bose website or contact Bose customer service directly. Keep your proof of purchase for warranty claims.