

SKYLINK SKHU100

Skylink SKHU100 Net Internet Hub User Manual

Model: SKHU100

1. PRODUCT OVERVIEW

The Skylink SKHU100 Net Internet Hub serves as the central control unit, or "brain," for your Home Alarm and Automation system. It connects to your home's router to coordinate the activities of all connected sensors and receivers. This hub features a built-in 110dB siren, a backup battery for uninterrupted operation during power outages, and a 4-button keypad for arming and disarming the alarm system.



Figure 1: The Skylink SKHU100 Net Internet Hub. This image displays the compact, white hub unit with its integrated 4-button keypad (labeled 1-4), a lock/unlock button, and status indicators for Wi-Fi and power. The central display area is visible above the keypad.

Key Features:

- Central control unit for the SkylinkNet Alarm System.
- Plug & Play installation for quick setup.
- Integrated 110-decibel siren for audible alerts.
- Supports various SkylinkNet sensors, cameras, and home control receivers.
- Equipped with a backup battery to ensure continuous operation during power outages.

2. SETUP GUIDE

Follow these steps to set up your Skylink SKHU100 Net Internet Hub.

2.1 Unboxing and Initial Inspection

1. Carefully remove all components from the packaging.
2. Verify that all included components are present: the Internet Hub unit, power adapter, and backup battery.
3. Inspect the hub and accessories for any signs of damage. If any damage is found, do not proceed with installation and contact customer support.

2.2 Connecting the Hub

1. Connect one end of an Ethernet cable (not included) to the LAN port on the back of the Internet Hub.
2. Connect the other end of the Ethernet cable to an available LAN port on your home's internet router.
3. Insert the backup battery into the designated battery compartment on the hub. Ensure correct polarity.
4. Connect the power adapter to the DC input port on the hub, then plug the adapter into a standard electrical outlet.
5. Allow a few moments for the hub to power on and establish a network connection. The status indicators on the hub will illuminate to show connectivity.

2.3 App Installation and Pairing

1. Download the "SkylinkNet" application from your smartphone's app store (available for iOS and Android).
2. Open the app and follow the on-screen instructions to create a new account or log in to an existing one.
3. Within the app, select the option to add a new device. The app will guide you through the process of pairing your Internet Hub. This typically involves scanning a QR code on the hub or entering a serial number.
4. Once the hub is successfully paired, you can begin adding and configuring other SkylinkNet sensors and devices through the app.

3. OPERATING THE HUB

The Skylink SKHU100 Net Internet Hub can be operated via its integrated keypad or through the SkylinkNet smartphone application.

3.1 Using the Keypad

The 4-button keypad and the lock/unlock button provide direct control over the alarm system's arming status.

- **Arming the System:** Press the **lock** button. The system will enter an armed state after a short delay.
- **Disarming the System:** Press the **unlock** button. The system will disarm.
- **Custom Codes:** You may configure custom arm/disarm codes using the 1-4 buttons through the SkylinkNet app. Refer to the app's settings for code management.

3.2 Using the SkylinkNet App

The smartphone app offers comprehensive control and monitoring capabilities.

- **Arm/Disarm:** Control the alarm system's status remotely.

- **Device Management:** Add, remove, and configure connected sensors and receivers.
- **Notifications:** Receive real-time alerts and status updates.
- **Event Log:** Review a history of system events.
- **Settings:** Customize system settings, siren volume, entry/exit delays, and user permissions.

4. MAINTENANCE

Regular maintenance ensures the optimal performance and longevity of your Skylink SKHU100 Net Internet Hub.

4.1 Cleaning

- Wipe the exterior of the hub with a soft, dry cloth.
- Do not use liquid cleaners, aerosols, or abrasive solvents, as these can damage the unit.

4.2 Battery Replacement

The backup battery provides power during electrical outages. If the hub consistently loses power during outages despite being fully charged, or if the app indicates a low battery status for the hub, the backup battery may need replacement.

1. Disconnect the power adapter from the hub and the wall outlet.
2. Locate the battery compartment, typically on the back or bottom of the unit.
3. Open the compartment and carefully remove the old battery. Note its orientation.
4. Insert a new, compatible lead-acid battery (6 Volts, as per specifications) into the compartment, ensuring correct polarity.
5. Close the battery compartment and reconnect the power adapter.
6. Properly dispose of the old battery according to local regulations.

4.3 Firmware Updates

Skylink may release firmware updates to improve performance, add features, or address security vulnerabilities. These updates are typically managed through the SkylinkNet app. Ensure your hub is connected to the internet and follow app prompts for any available updates.

5. TROUBLESHOOTING

This section addresses common issues you might encounter with your Skylink SKHU100 Net Internet Hub.

Problem	Possible Cause	Solution
Hub not powering on.	Power adapter not connected or faulty; power outlet not active.	Ensure power adapter is securely connected to the hub and a working electrical outlet. Test the outlet with another device.
No internet connection (status light off/red).	Ethernet cable disconnected or faulty; router issue; incorrect network settings.	Check Ethernet cable connection to both hub and router. Restart your home router. Verify your internet service is active.
Cannot pair hub with SkylinkNet app.	Hub not connected to internet; incorrect pairing procedure; app version outdated.	Ensure hub has an active internet connection. Follow app pairing instructions carefully. Update the SkylinkNet app to the latest version.

Problem	Possible Cause	Solution
Siren not activating.	Siren disabled in settings; system not armed; faulty siren.	Check siren settings in the SkylinkNet app. Ensure the system is armed when testing. If issues persist, contact customer support.
Hub loses power during outages.	Backup battery depleted or faulty; battery not installed correctly.	Ensure the backup battery is properly installed. If the issue continues, the backup battery may need to be replaced.

If you encounter issues not listed here or if the suggested solutions do not resolve the problem, please contact Skylink customer support for further assistance.

6. SPECIFICATIONS

Attribute	Detail
Brand	SKYLINK
Model Number	SKHU100 (also listed as Hu-100)
Manufacturer	Skylink
Product Dimensions	11 x 11 x 9 cm
Item Weight	260 g (0.26 Kilograms)
Colour	White
Power Source	Battery Powered (with AC adapter)
Voltage	6 Volts
Installation Method	Plug & Play
Sound Level (Siren)	110 dB
Included Components	Internet Hub, Battery (backup), Power Adapter, Siren (built-in)
Batteries Required?	Yes (for backup battery)
Battery Cell Type	Lead Acid
Connectivity Technology	Wireless, Ethernet
Compatible Devices	Smartphone (via SkylinkNet app)
Alert Type	Motion Only

7. WARRANTY AND SUPPORT

For warranty information and technical support, please refer to the official Skylink website or contact their customer service department directly. Keep your purchase receipt as proof of purchase for warranty claims.


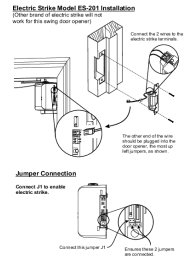


Skylink Customer Support:

- Visit the official Skylink website for FAQs, support resources, and contact information.
- Contact details (phone, email) are typically available on the product packaging or the manufacturer's website.



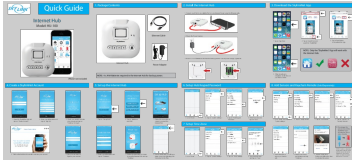
© 2024 SKYLINK. All rights reserved.
This manual is for informational purposes only. Specifications are subject to change without notice.

Related Documents

	<p>Skylink MZ-104 4K/HD SAT & Internet Receiver Quick Start Guide</p> <p>This Quick Start Guide provides essential information for setting up and using your Skylink MZ-104 4K/HD Satellite and Internet Receiver. Learn about connections, installation steps, and basic navigation.</p>
	<p>Electric Strike Model ES-201 Installation Guide Skylink</p> <p>Step-by-step installation instructions for the Skylink Electric Strike Model ES-201, including wiring and jumper connection details for swing door openers.</p>
	<p>Skylink SMO Side Mount Garage Door Opener Owner's Manual</p> <p>Comprehensive owner's manual for the Skylink SMO Side Mount Garage Door Opener, covering installation, programming, operation, maintenance, and troubleshooting. Learn how to safely and effectively use your garage door opener.</p>
	<p>NWP5020K2-242MSE3 Chip Antenna Specification</p> <p>Technical specification for the NWP5020K2-242MSE3 chip antenna, designed for Bluetooth and WLAN applications. Includes dimensions, electrical specifications, PCB layout recommendations, measurement results, reliability testing, soldering guidelines, and packaging information.</p>

[\[pdf\]](#) User Manual Installation Guide Guide

HU 100 QG 101Y246 ENG Quick Guide 1 Package Contents the manual of device 7 Tap Learn Now button Learning Mode Settings Push Notification Online Offline Sensors Receivers Menu Bar Sensor activation The blue sensor icons will turn red if its activated Receive push notification anytime a new activity takes place for individual remote or receiver Shows hub name English SKHU100 skylinkstore users skylinknet homecontrols 80 products s SK Skylink ca



Quick Guide Internet Hub Model: HU-100 1. Package Contents 2. Install the Internet Hub 1. Connect your Hub to an available Port on your Internet Router using the Ethernet cable. Ethernet Cable 2. Plug in the Power Adapter. 4. Create a SkylinkNet Account Internet Hub Power Adapter iPhone not ...

lang:en score:26 filesize: 1.97 M page_count: 2 document date: 2015-03-20