

manuals.plus /

- › [Anlapus](#) /
- › [Anlapus 2.0MP 1080P HD 4-in-1 Security Camera Instruction Manual](#)

Anlapus 1AC-1242T-W-N

Anlapus 2.0MP 1080P HD 4-in-1 Security Camera Instruction Manual

Model: 1AC-1242T-W-N

1. PRODUCT OVERVIEW

The Anlapus 2.0MP 1080P HD 4-in-1 Security Camera is designed for both outdoor and indoor surveillance. It supports multiple video formats including TVI, CVI, AHD, and CVBS/960H analog, ensuring compatibility with various DVR systems. This camera features 24 IR LEDs for night vision and a weatherproof housing for reliable performance in diverse environmental conditions.



Image 1.1: Anlapus 2.0MP 1080P HD 4-in-1 Security Camera, showing its bullet-style design and mounting base.

2. KEY FEATURES

- **4-in-1 Compatibility:** Supports TVI, CVI, AHD, and CVBS/960H analog video formats.
- **1080P HD Resolution:** 2.0MP (1920x1080) sensor for clear and bright images.
- **80ft Night Vision:** Equipped with 24 IR LEDs and Dual IR-Cut Filter for clear night surveillance.
- **IP66 Weatherproof:** Durable housing protects against rain, snow, and harsh weather.
- **3.6mm Lens:** Provides a wide viewing angle.
- **3-Axis Camera Stand:** Allows for flexible mounting and positioning.
- **Digital Wide Dynamic Range (DWDR):** Enhances image quality in varying light conditions.
- **User-Friendly OSD Menu:** On-Screen Display menu for easy configuration and mode switching.

3. PACKAGE CONTENTS

- 1 x Anlapus 1080p 4-in-1 Security Camera
- 1 x Instruction Manual
- 1 x Mounting Screw Bag

Note: Power supply and video extension cable are not included and must be purchased separately.



Image 3.1: Contents of the Anlapus security camera package, including the camera, instruction manual, and mounting screws.

4. SETUP AND INSTALLATION

1. Mounting:

Select a suitable location for the camera, considering the desired viewing area and proximity to power and video cables. Use the included mounting screws to securely attach the camera to a wall or ceiling. The 3-axis stand allows for flexible adjustment of the camera's angle.

2. Cable Connection:

Connect the camera's video output (BNC connector) to your DVR system using a compatible video extension cable (not included). Connect the camera's power input to a 12V power supply (not included).

3. Power On:

Once all connections are secure, plug in the power supply to activate the camera and DVR system.

How to switch the camera output mode?

1



Make sure which video format your DVR supports. Very important!

2



Connect the 4-in-1 camera to the DVR

3



Press OSD joystick to switch the output mode
Default/ Right : **TVI**
DOWN: **CVI**, LEFT: **AHD**, UP;
CVBS 960H.

Note: The Default output mode of this camera is TVI, please press OSD joystick to UP,DOWN,LEFT,RIGHT directions for 5 seconds for the different video mode

Image 4.1: Diagram showing the Anlapus camera with its components labeled, including the IP66 weatherproof rating, 3.6mm lens, IR-Cut filter, 24 LEDs for night vision, glass cover, OSD joystick, power port, and video output.

5. OPERATING INSTRUCTIONS: VIDEO MODE SWITCHING

This Anlapus camera supports four video modes: TVI, CVI, AHD, and CVBS/960H Analog. The default video mode is TVI. To ensure proper display, the camera's output mode must match the input mode supported by your DVR. You can switch the video mode using the OSD (On-Screen Display) joystick located on the camera's short cable.

5.1. How to Switch Video Output Mode

1. Check DVR Compatibility:

Before switching, identify which video formats your DVR supports. This is crucial for successful operation.

2. Connect Camera to DVR:

Ensure the 4-in-1 camera is connected to your DVR system and powered on.

3. Use OSD Joystick:

Press and hold the OSD joystick in the desired direction for approximately 5 seconds, then release. The screen will momentarily go blank before displaying the image in the new mode.

- **Upward:** Switches to CVBS/960H Analog mode.
- **Downward:** Switches to CVI mode.
- **Leftward:** Switches to AHD mode.
- **Rightward:** Switches to TVI mode (default).

Important Note: If your DVR supports 4-in-1 (or 5-in-1) modes, it is recommended to set the camera to TVI, AHD, or CVI mode for optimal image quality. If no image displays after switching, try cycling through all modes on the OSD joystick.

OSD Menu for Mode Switch Configuration

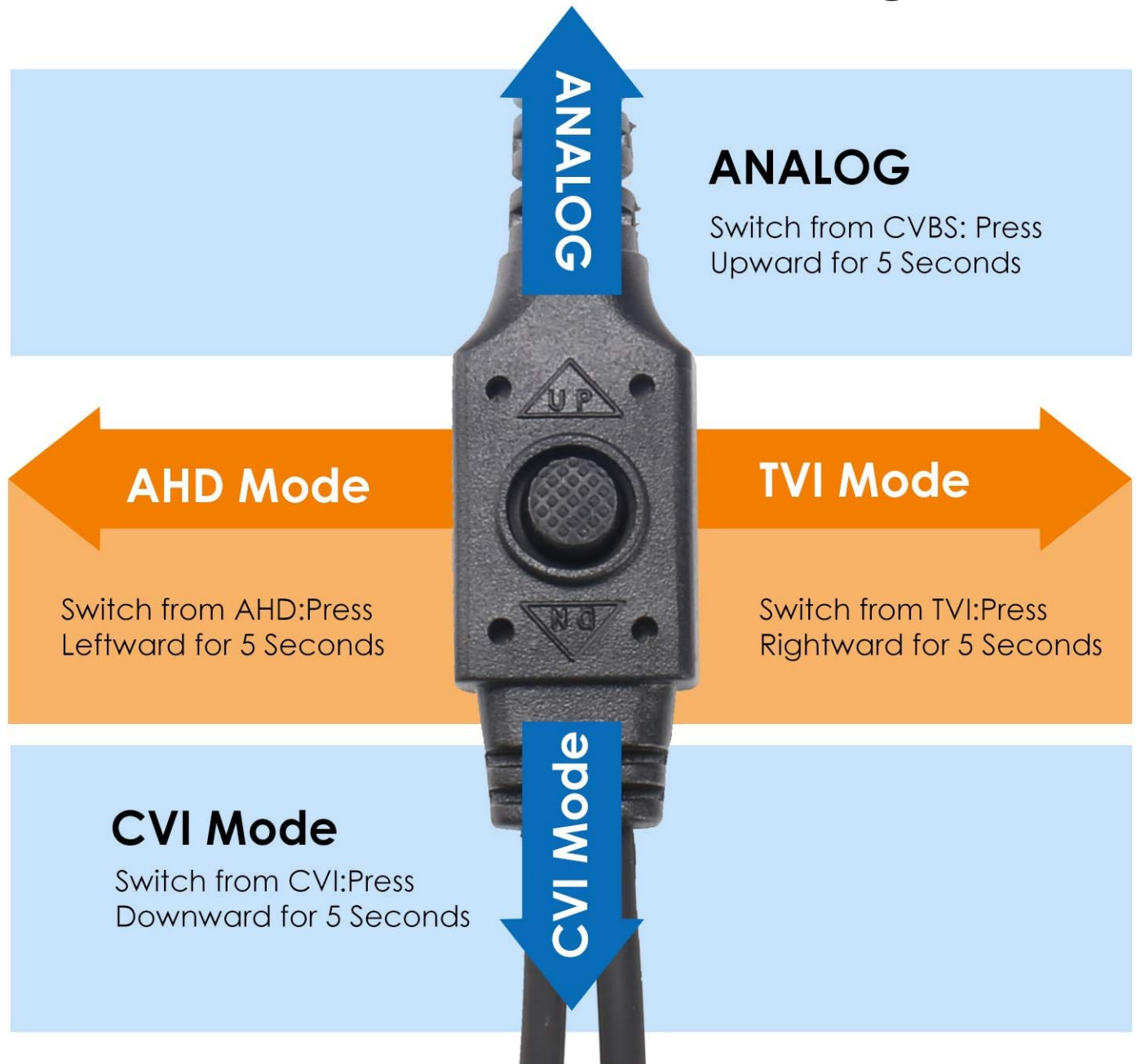


Image 5.1: Diagram illustrating the OSD joystick and the directions to press for switching between ANALOG (CVBS/960H), AHD, TVI, and CVI video modes.

960H/CVI/AHD/TVI 4-in-1 Camera

This is 4-in-1 TVI/CVI/AHD/CVBS Camera, the default video mode is TVI. Compatible with TVI, CVI, AHD, and CVBS/960H analog DVR.

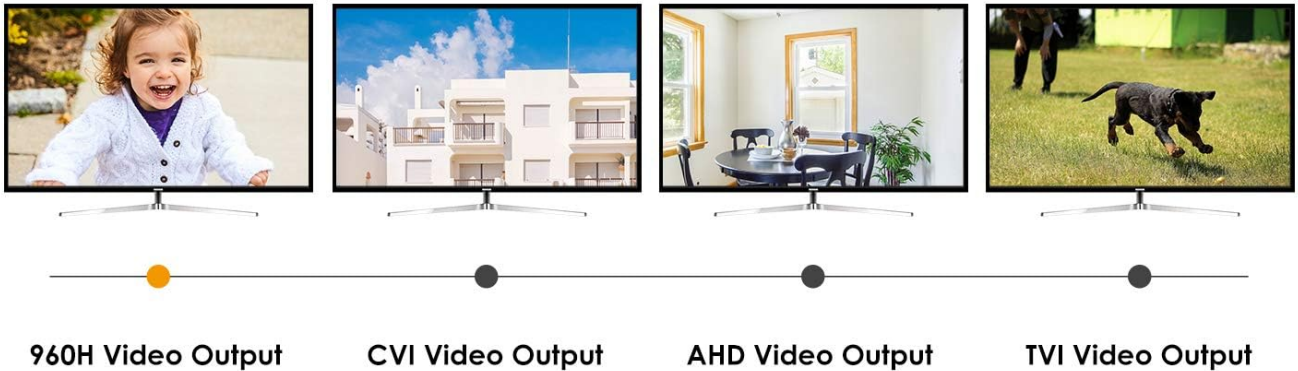
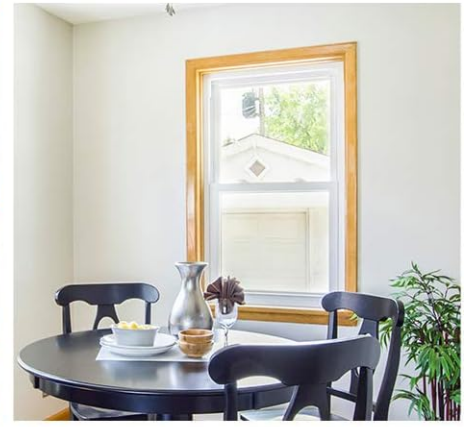


Image 5.2: Visual representation of the 4-in-1 camera's compatibility with 960H, CVI, AHD, and TVI video outputs, showing example footage for each mode.



Indoors And Outdoors Easy Installation

It could be widely applicable to store, home, office, school, take care for parents, baby and your family.

Image 5.3: Step-by-step guide on how to switch the camera's output mode: 1. Verify DVR support, 2. Connect camera to DVR, 3. Use OSD joystick to switch modes (Up for CVBS 960H, Down for CVI, Left for AHD, Right for TVI).

5.2. Video Demonstration: How to Use Anlapus 4-in-1 Camera

Your browser does not support the video tag.

Video 5.1: A demonstration video showing the process of switching the Anlapus 4-in-1 camera between different video modes (CVBS/960H, CVI, AHD, TVI) using the OSD joystick, and how the image appears on a connected monitor.

6. TROUBLESHOOTING

- **No Image Display:**

Ensure the camera is properly powered and connected to the DVR. Verify that the camera's video output mode matches the DVR's input mode using the OSD joystick as described in Section 5. If still no image, try cycling through all modes on the OSD joystick.

- **Poor Image Quality:**

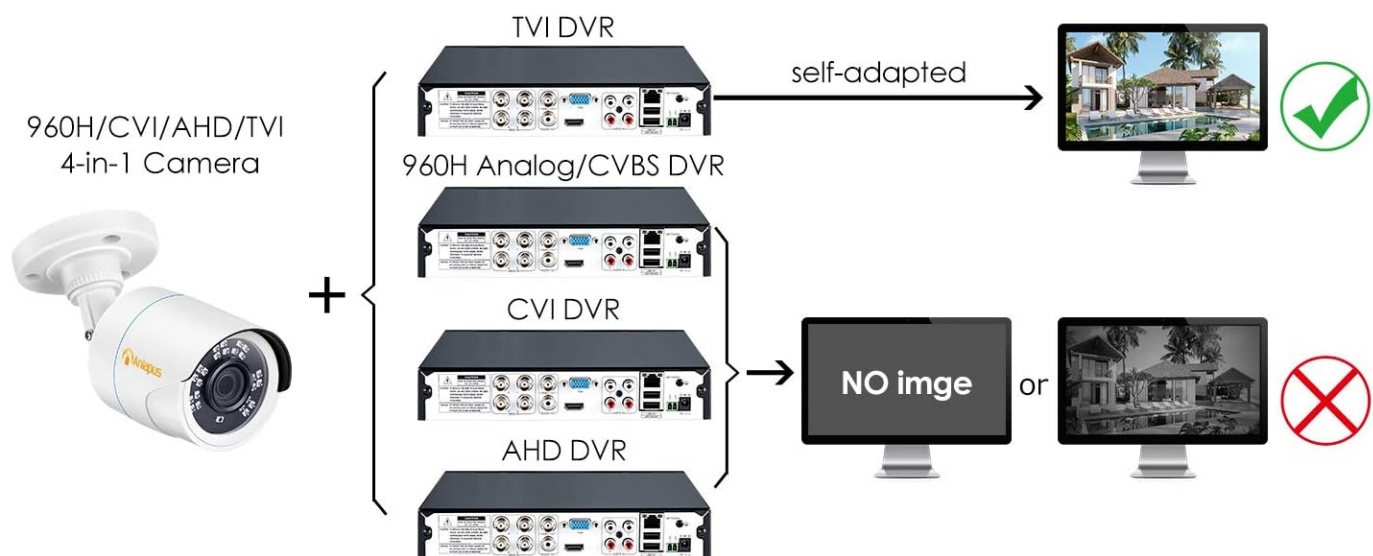
Check all cable connections for looseness or damage. Ensure the lens is clean and free from obstructions. Adjust the camera's position to avoid direct glare or reflections. For optimal 1080P resolution, ensure your DVR supports 1080P/1080P Lite/1080N TVI/CVI/AHD/Analog formats.

• **Night Vision Issues:**

Ensure there are no obstructions blocking the IR LEDs. Verify that the camera is receiving adequate power. The IR-Cut filter should automatically switch in low light conditions.

7. SPECIFICATIONS

Model Name	A1C-124C4-WNS
Item Model Number	1AC-1242T-W-N
Video Capture Resolution	2MP (1080P)
Connectivity Technology	Wired
Indoor/Outdoor Usage	Outdoor (also suitable for Indoor)
Night Vision Range	80 Feet
International Protection Rating	IP66
Lens	3.6mm
Power Source	DC 12V (Power adapter not included)
Item Dimensions (L x W x H)	6.3 x 3.15 x 2.76 inches
Item Weight	7.8 ounces
Special Features	Motion Sensor, Portable, Digital Wide Dynamic Range (DWDR)



Please adjust the camera to the SAME mode with your DVR by OSD button

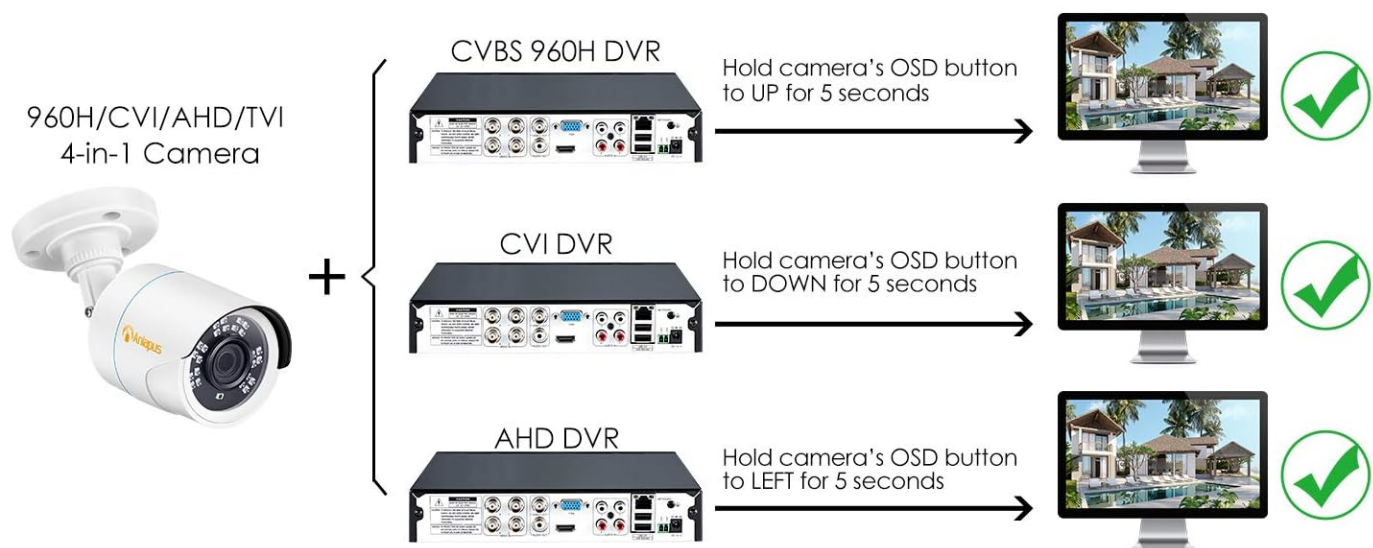


Image 7.1: Comparison of the camera's color image during the day and black & white image with IR illumination at night, demonstrating its day/night capabilities.

8. WARRANTY AND SUPPORT

This Anlapus security camera comes with a **2-year warranty**. Free lifetime technical support is also provided. For assistance, please refer to the contact information provided with your purchase or visit the official Anlapus support website.

