

## Manuals+

[Q & A](#) | [Deep Search](#) | [Upload](#)

manuals.plus /

› [Brentwood](#) /

› [Brentwood JC-452W Juice Extractor User Manual](#)

## Brentwood JC-452W

# Brentwood JC-452W Juice Extractor User Manual

Model: JC-452W | Brand: Brentwood

## 1. INTRODUCTION

---

Thank you for purchasing the Brentwood JC-452W Juice Extractor. This manual provides essential information for the safe and efficient operation, maintenance, and care of your new appliance. Please read all instructions carefully before use and retain this manual for future reference.

## 2. IMPORTANT SAFETY INSTRUCTIONS

---

When using electrical appliances, basic safety precautions should always be followed to reduce the risk of fire, electric shock, and/or injury to persons, including the following:

- Read all instructions before operating the appliance.
- Do not immerse the motor base in water or other liquids.
- Ensure the appliance is unplugged from the outlet when not in use, before assembling or disassembling parts, and before cleaning.
- Avoid contact with moving parts. The cutting blade is very sharp. Handle with care.
- Do not operate any appliance with a damaged cord or plug, or after the appliance malfunctions or has been dropped or damaged in any manner.
- Do not use outdoors.
- Always ensure the juicer cover is properly secured before the motor is switched on.
- Do not put fingers or other objects into the juicer opening while it is in operation. If food becomes lodged in the opening, use the food pusher to push it down. If this is not possible, turn off the motor and unplug the appliance before attempting to remove the food.
- This appliance is equipped with a power interlock system for safety. The juicer will not operate unless all parts are correctly assembled and the locking bar is securely in place.

## 3. PRODUCT OVERVIEW AND COMPONENTS

---

Familiarize yourself with the parts of your Brentwood JC-452W Juice Extractor:

- **Motor Base:** Contains the 400-watt motor and speed control knob. Features non-slip feet for stability.
- **Filter Basket / Cutting Blade:** Stainless steel blade and mesh filter for efficient juice extraction.
- **Juicer Cover:** Transparent cover with a wide feed chute.
- **Food Pusher:** Used to guide fruits and vegetables into the feed chute.
- **Pulp Container:** Collects the extracted pulp.
- **Juice Pitcher:** 350ml capacity graduated jar for collecting fresh juice.
- **Locking Bar:** Secures the juicer cover to the motor base.



Figure 1: Fully assembled Brentwood JC-452W Juice Extractor.



Figure 2: The 350ml graduated juice pitcher for precise measurements.

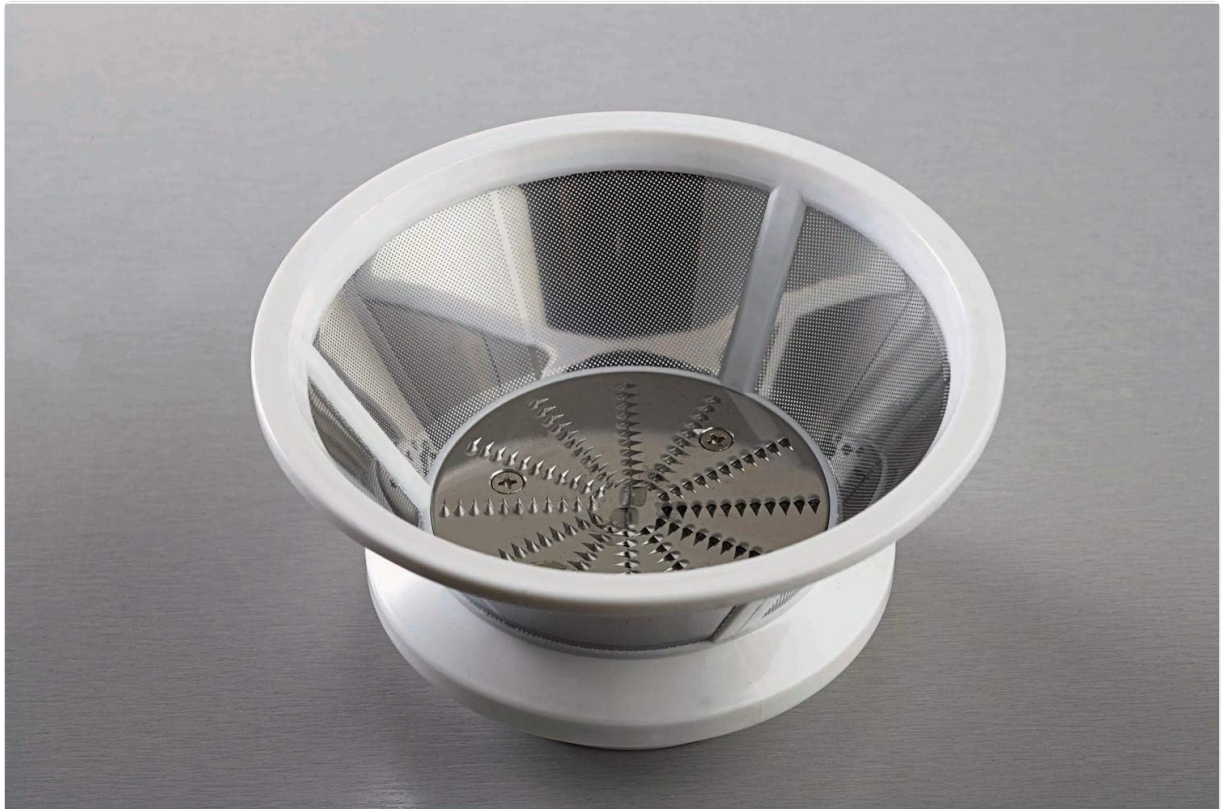


Figure 3: Close-up of the stainless steel filter basket and cutting blade.



Figure 4: The food pusher, designed to safely guide produce into the juicer.

## 4. SETUP AND ASSEMBLY

---

Before first use, wash all removable parts (juicer cover, filter basket, pulp container, food pusher, and juice pitcher) in warm, soapy water. Rinse thoroughly and dry. Ensure the motor base is unplugged during assembly.

1. Place the motor base on a clean, dry, and stable surface. The non-slip feet will help secure it.
2. Insert the pulp container into its designated slot on the side of the motor base.
3. Carefully place the filter basket/cutting blade onto the motor base, ensuring it sits securely on the drive shaft.
4. Position the juicer cover over the filter basket, aligning the spout with the opening for the juice pitcher.
5. Raise the locking bar and secure it into the grooves on both sides of the juicer cover. You should hear a click, indicating it is locked. The appliance will not operate if the locking bar is not engaged.
6. Place the juice pitcher under the juicer's spout.
7. Insert the food pusher into the feed chute.



Figure 5: Ensure the locking bar is securely engaged for safe operation.

## 5. OPERATING INSTRUCTIONS

---

Prepare your fruits and vegetables by washing them thoroughly. For most items, peeling is not necessary, but remove large seeds or hard pits (e.g., peach, mango, avocado). The wide feeder chute accommodates larger pieces, reducing pre-cutting time.

1. Ensure the juicer is correctly assembled and plugged into a grounded electrical outlet.
2. Place the juice pitcher under the spout.
3. Turn the control knob to the desired speed setting:
  - **Speed I (Low):** Ideal for softer fruits and leafy vegetables (e.g., berries, grapes, spinach, tomatoes).
  - **Speed II (High):** Recommended for harder fruits and vegetables (e.g., apples, carrots, celery, ginger).
4. With the motor running, gradually feed the prepared produce into the wide feed chute. Use the food pusher to gently guide the produce down. Do not force the food pusher, as this can affect juice quality and potentially damage the motor.
5. Juice will flow into the pitcher, and pulp will collect in the pulp container.

6. When finished juicing, turn the control knob to the '0' (Off) position and unplug the appliance.



Figure 6: The 2-speed control knob for optimal juicing of various produce types.

## 6. CLEANING AND MAINTENANCE

---

Regular cleaning ensures optimal performance and extends the life of your juicer. Always unplug the appliance before cleaning.

1. Turn the juicer off and unplug it from the power outlet.
2. Unlock and remove the locking bar.
3. Carefully remove the food pusher, juicer cover, filter basket, and pulp container.
4. Empty the pulp container.
5. Rinse all removable parts under running water immediately after use to prevent pulp from drying and sticking.
6. All removable parts are dishwasher safe (top rack recommended). For manual cleaning, use warm, soapy water and a non-abrasive sponge.
7. Pay special attention to the filter basket/cutting blade. Use a brush (if provided) to remove any stubborn pulp from the mesh. Handle the blade with extreme caution as it is very sharp.

- Wipe the motor base with a damp cloth. Never immerse the motor base in water or any other liquid.
- Dry all parts thoroughly before reassembling or storing.

## 7. TROUBLESHOOTING

---

If you encounter issues with your juicer, refer to the following common problems and solutions:

- Motor does not start:** Ensure the appliance is properly assembled, and the locking bar is securely engaged. Check that the power cord is firmly plugged into a working outlet.
- Poor juice yield or excessive wet pulp:** This may occur if produce is fed too quickly or if the filter basket is clogged. Feed produce slowly and steadily. Clean the filter basket thoroughly after each use. Ensure the correct speed setting is used for the type of produce.
- Excessive vibration or noise:** This can happen if the filter basket is not properly seated or if there is an imbalance due to large, uneven pieces of produce. Turn off the juicer, unplug it, and reassemble the filter basket. Cut produce into smaller, more uniform pieces.
- Overheating:** If the juicer runs continuously for too long or processes very hard ingredients without pause, it may overheat. The appliance has an overload protection feature. If it stops, turn it off, unplug it, and let it cool down for at least 30 minutes before resuming use.

## 8. SPECIFICATIONS

---

<b>Brand</b>	Brentwood
<b>Model Number</b>	JC-452W
<b>Maximum Power</b>	400 Watts
<b>Number of Speeds</b>	2
<b>Capacity (Juice Pitcher)</b>	350 Milliliters
<b>Blade Material</b>	Stainless Steel
<b>Material (Body)</b>	Plastic
<b>Product Dimensions</b>	12.6 x 10.7 x 8.6 inches
<b>Item Weight</b>	5.9 pounds
<b>Power Source</b>	Corded Electric
<b>Product Care Instructions</b>	Dishwasher Safe (removable parts)
<b>Special Feature</b>	Power Interlock, Wide Feeder

## 9. WARRANTY AND SUPPORT

---

For warranty information, please refer to the documentation included with your purchase or contact Brentwood customer support directly. Keep your proof of purchase for any warranty claims.

For further assistance or inquiries, please visit the official Brentwood website or contact their customer service department.

