

Manuals+

[Q & A](#) | [Deep Search](#) | [Upload](#)

[manuals.plus](#) /

- › [Waterstone](#) /
- › [Waterstone Hunley Wall Mount Pot Filler Faucet User Manual](#)

Waterstone 3200-MB

Waterstone Hunley Wall Mount Pot Filler Faucet User Manual

Model: 3200-MB

PRODUCT OVERVIEW

The Waterstone Hunley Wall Mount Pot Filler Faucet (Model 3200-MB) is a contemporary fixture designed for kitchen use. It features an articulated spout for functional reach and is constructed from solid brass, finished in matte black. This manual provides essential information for installation, operation, maintenance, and specifications of the faucet.



Image: Waterstone Hunley Wall Mount Pot Filler Faucet in Matte Black finish. This faucet features a wall-mounted design with a long, articulated arm for extended reach over stovetops.

INSTALLATION AND SETUP

Proper installation is crucial for the optimal performance and longevity of your Waterstone pot filler faucet. It is recommended that installation be performed by a qualified professional plumber.

Pre-Installation Checklist:

- Ensure all necessary plumbing connections are in place, including a 1/2" stub out connection at the desired wall location.
- Verify that the wall structure can support the weight of the faucet and water pressure.
- Confirm compliance with local plumbing codes, including AB-1953 low lead requirements.
- Inspect all components for any visible damage prior to installation.

Mounting Instructions:

The faucet is designed for wall-mounted installation. Refer to the technical specifications diagram for precise dimensions and mounting hole requirements.

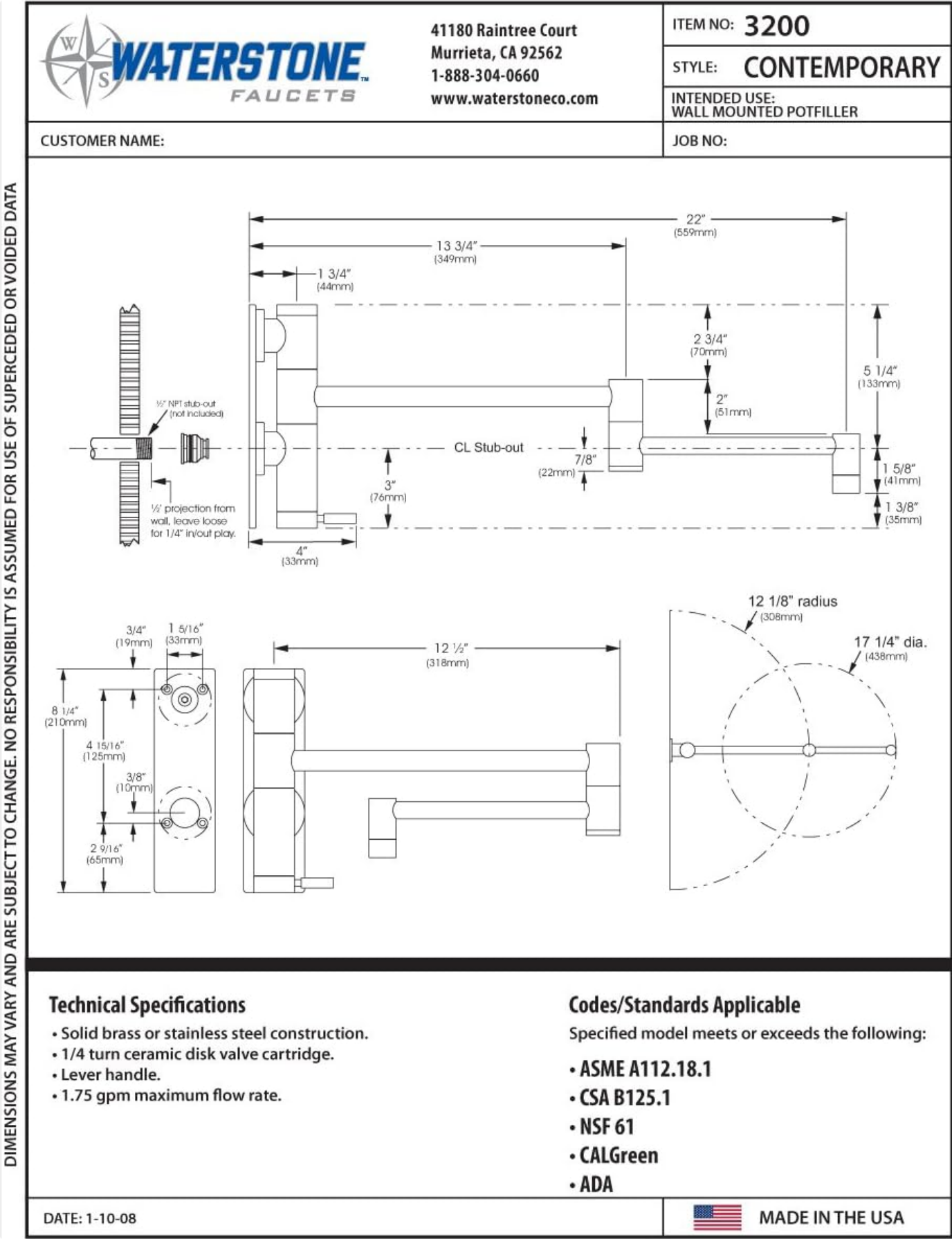


Image: Technical specifications diagram for the Waterstone Model 3200 Wall Mounted Pot Filler. This diagram provides detailed measurements, including spout reach (22 inches), overall height (8.25 inches), and connection dimensions for installation planning.

Note: The faucet features solid brass construction for durability. Ensure all connections are sealed properly to prevent leaks. The

swivel joints are equipped with 1600 psi seals for reliable performance.

OPERATING INSTRUCTIONS

The Waterstone Hunley Pot Filler Faucet is designed for ease of use with a single handle operation.

Faucet Operation:

- **Handle:** The faucet is equipped with a metal lever handle. Turn the handle a 1/4" turn to activate or deactivate water flow.
- **Spout:** The articulated spout can be extended up to 22 inches to reach multiple burners on a stovetop. It features a built-in check valve to prevent dripping when not in use.
- **Flow Rate:** The maximum flow rate is 2.2 gallons per minute (GPM), providing efficient water delivery for filling pots.
- **Aerator:** A Neoperl aerator is integrated into the spout to ensure a smooth, splash-free water stream.

MAINTENANCE AND CARE

Proper care and cleaning will preserve the finish and functionality of your Waterstone faucet. This model features a Matte Black finish.



Care and Cleaning Instructions for these Waterstone Finishes:

CH (Chrome)

SC (Satin Chrome)

About Your Finish

These finishes are the most durable finishes Waterstone offers. The best general maintenance is regular cleaning. Even though these finishes are considered durable, you can never use any abrasive type cleaners, clothes, or pads to clean your fixture. Always try and keep your finishes clean and dry. Trapped moisture on the surface of your finish can lead to staining. Astringent cleaners, chlorine, bleach, along with acidic based organic cleansers are potentially harmful to these finishes.

Chrome plated finishes are very tarnish resistant. However, they are not indestructible and can scratch and mar.

IMPORTANT NOTICE:

*It is the responsibility of the customer to check for any material finish defects **before** installation.*

Suggested Finish Maintenance Procedures

1. Do not allow water spots to dry on the fixture.
2. Periodic cleaning can be done by applying denatured isopropyl alcohol with a soft clean cloth to gently remove surface spots.
3. Never use cleaners with abrasives, soft scrub, Clorox, any type of abrasive pad or sponge.

Form, Function, Forever

89



CAT109

Image: Waterstone Faucet Care and Cleaning Instructions for various finishes. This document outlines general maintenance procedures to ensure the longevity and appearance of the faucet's finish.

Important Notice:

It is the responsibility of the customer to check for any material finish defects before installation.

Suggested Finish Maintenance Procedures:

1. Do not allow water spots to dry on the fixture.
2. Periodic cleaning can be done by applying denatured isopropyl alcohol with a soft clean cloth to gently remove surface spots.

3. Never use cleaners with abrasives, soft scrub, Clorox, or any type of abrasive pad or sponge, as these can damage the finish.

TROUBLESHOOTING

This section provides general guidance for common issues. For complex problems, contact Waterstone customer support or a qualified plumber.

- **Low Water Flow:** Check water supply valves are fully open. Inspect the aerator for mineral buildup and clean if necessary.
- **Leaks:** Ensure all connections are tight. If leaks persist from the handle or spout, the internal ceramic valve cartridge may need inspection or replacement by a professional.
- **Dripping Spout:** The built-in check valve should prevent dripping. If dripping occurs, ensure the handle is fully closed. Persistent dripping may indicate an issue with the check valve or cartridge.

SPECIFICATIONS

Feature	Detail
Brand	Waterstone
Model Number	3200-MB
Mounting Type	Wall Mount
Finish Type	Matte Black
Material	Brass, Stainless Steel
Number of Handles	1
Handle Type	Lever
Special Feature	Pull Down Sprayer (Note: Product description mentions articulated spout, not pull down sprayer.)
Installation Type	Single Hole
Maximum Flow Rate	2.2 Gallons Per Minute
Spout Height	1.38 Inches
Spout Reach	22 Inches
Item Weight	8 Pounds
Product Dimensions	22.5 x 11.75 x 3.75 inches
Manufacturer	Standard Plumbing Supply
Date First Available	August 19, 2010

WARRANTY INFORMATION

All Waterstone products are manufactured with quality and care. Your Hunley Pot Filler Faucet is covered by a Limited Lifetime Guarantee.

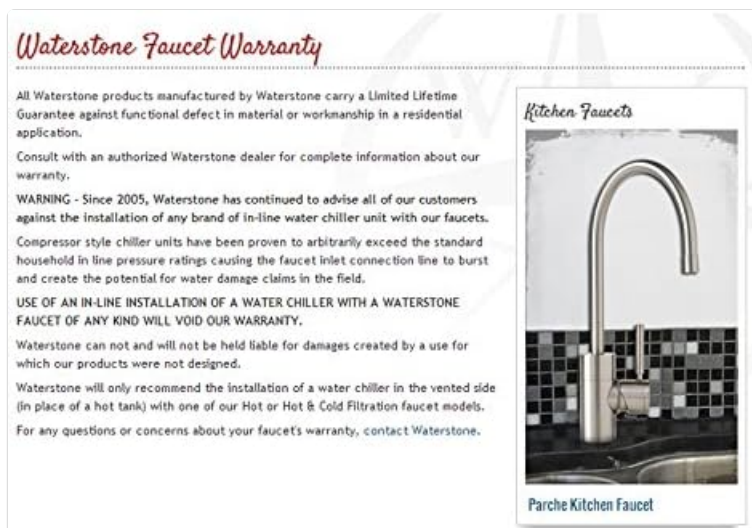


Image: Waterstone Faucet Warranty document. This page details the limited lifetime guarantee against material or workmanship defects for residential applications.

Limited Lifetime Guarantee:

Waterstone products carry a Limited Lifetime Guarantee against functional defects in material or workmanship when used in a residential application. For complete information about your warranty, consult with an authorized Waterstone dealer.

Important Warranty Warning:

Since 2005, Waterstone has advised against the installation of any brand of in-line water chiller unit with their faucets. Compressor style chiller units have been known to arbitrarily exceed standard household in-line pressure ratings, potentially causing the faucet inlet connection line to burst and creating water damage claims. **The use of an in-line installation of a water chiller with a Waterstone faucet of any kind will void your warranty.** Waterstone will only recommend the installation of a water chiller in the vented side (in place of a hot tank) with one of their Hot & Cold Filtration faucet models.

CUSTOMER SUPPORT

For any questions regarding your Waterstone Hunley Pot Filler Faucet, including warranty inquiries or technical assistance, please contact Waterstone directly.


Phone: 1-888-304-0060

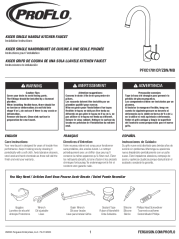




Website: www.waterstoneco.com

Address: 41180 Raintree Court, Murrieta, CA 92562

© 2024 Waterstone Faucets. All rights reserved.

Related Documents - 3200-MB

	<p>Midea All-intelligent Rice Cooker User Manual: Model Guide & Instructions</p> <p>Comprehensive user manual for Midea all-intelligent rice cookers. Find instructions, safety guidelines, troubleshooting, technical specifications, and maintenance tips for Midea rice cooker models.</p>
---	---

	<p>PROFLO KIGER Single Handle Kitchen Faucet Installation Instructions</p> <p>Detailed installation and care instructions for the PROFLO KIGER Single Handle Kitchen Faucet (Model PFXC1701CP/ZBN/MB). Includes warnings, required tools, step-by-step installation guidance, and a parts list. Installation by a licensed plumber is recommended.</p>
	<p>Multiplex Blend-In-Cup (BIC) Beverage System: Installation, Operation, and Maintenance Manual</p> <p>Comprehensive guide for the Multiplex Blend-In-Cup (BIC) beverage system, covering installation, operation, maintenance, safety, and troubleshooting. Essential for owners, operators, and installers.</p>
	<p>Euromex MicroBlue Series Microscope User Manual</p> <p>Comprehensive user manual for the Euromex MicroBlue series microscopes, detailing features, operation, safety, maintenance, and specifications for laboratory and educational use.</p>
	<p>Moinhos de Bolas e Barras Furlan Linha MB/MA: Especificações e Aplicações Industriais</p> <p>Explore a linha MB/MA de moinhos de bolas e barras da Furlan. Equipamentos robustos e eficientes para moagem industrial fina e grossa em mineração e indústrias químicas. Consulte especificações técnicas, modelos e contato.</p>
	<p>Montblanc Haute Horlogerie Watch Service Guide</p> <p>Explore the Montblanc Service Guide for Haute Horlogerie timepieces, detailing Montblanc's watchmaking manufactures in Le Locle and Villeret, quality standards, care recommendations, and service options for luxury watches.</p>

Documents - Waterstone – 3200-MB

no relevant documents