

PHILIPS SH50/50

Philips SH50/50 Replacement Blades User Manual

Model: **SH50/50** | Brand: **PHILIPS**

1. INTRODUCTION

This manual provides essential information for the proper installation and maintenance of your Philips SH50/50 Replacement Blades. Designed for Philips Series 5000 Electric Shavers, these blades ensure a consistently close and comfortable shave. Regular replacement and proper care are crucial for optimal performance and longevity.



Figure 1: Philips SH50/50 Replacement Blades (3-pack)

2. SAFETY INFORMATION

Please read and understand the following safety guidelines before handling or installing the replacement blades:

- Handle with care. The blades are sharp and can cause injury if not handled properly.
- Keep out of reach of children.
- Use only as directed and for their intended purpose with compatible Philips shavers.

3. PRODUCT FEATURES

The Philips SH50/50 Replacement Blades offer advanced shaving technology for a superior experience:

- **MultiPrecision Blade System:** Engineered to efficiently cut both long hairs and short stubble in a single pass, ensuring a quick and effective shave.
- **Super Lift & Cut 2-Blade System:** This innovative design gently lifts the hair from the skin surface before cutting it, providing an exceptionally close and smooth result.
- **Optimal Performance:** Designed to restore your shaver to 100% performance, ensuring a consistent and comfortable shave every time.
- **Wet & Dry Use:** The blades are suitable for both wet and dry shaving, offering versatility and convenience.



Figure 2: Detail of a Philips MultiPrecision Blade

4. COMPATIBILITY

The SH50/50 replacement blades are specifically designed for all Philips Series 5000 electric shavers. They are also compatible with several other Philips shaver models. Always verify your shaver's model number to ensure compatibility.



Figure 3: Examples of compatible Philips shavers

5. INSTALLATION (BLADE REPLACEMENT)

To maintain optimal shaving performance, it is recommended to change your shaver's blades every 2 years. Follow these steps to replace the shaving heads:

1. **Open the Shaver Head:** Press the release button on your shaver to open the shaving head unit.
2. **Remove Retaining Rings:** Gently remove the blue retaining rings that hold the old blades in place.

3. **Remove Old Blades:** Carefully lift out the old shaving blades from their slots. Dispose of them safely.
4. **Insert New Blades:** Place the new SH50/50 blades into the shaver head, ensuring they fit securely into their respective positions.
5. **Re-attach Retaining Rings:** Place the retaining rings back over the new blades and press down until they click into place.
6. **Close Shaver Head:** Close the shaving head unit until it clicks securely.

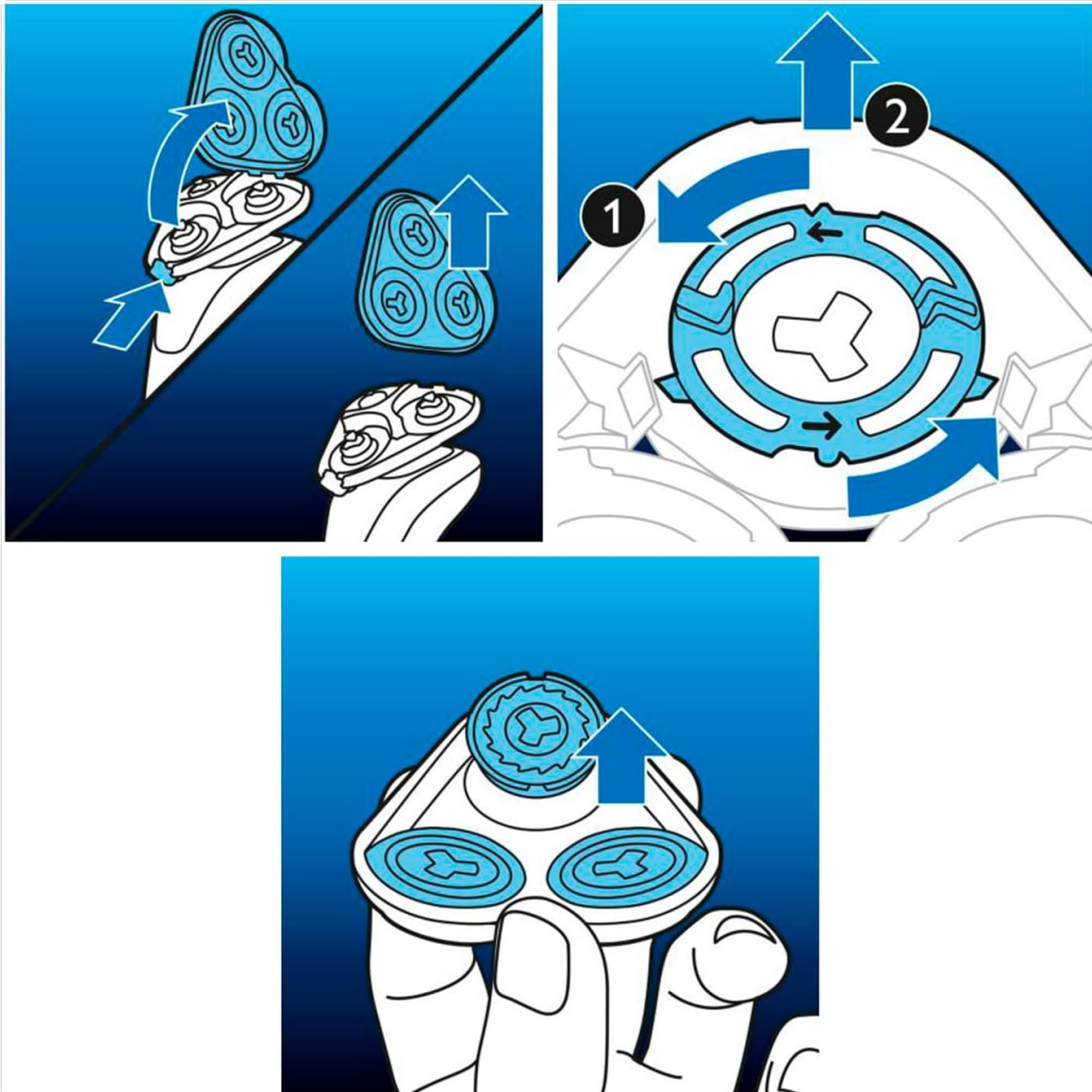


Figure 4: Step-by-step guide for blade replacement

6. MAINTENANCE

Proper maintenance of your shaver and new blades will ensure continued high performance:

- **Regular Cleaning:** After each shave, open the shaver head and rinse the blades and the shaver's internal components thoroughly under running water to remove hair clippings and debris.
- **Drying:** Allow the shaver head and blades to air dry completely before closing the unit or storing.

- **Replacement Frequency:** For 100% performance, replace your SH50/50 blades every 2 years. This ensures the blades remain sharp and effective, preventing pulling or irritation.



Figure 5: Recommended 2-year replacement cycle

7. SPECIFICATIONS

Model Number	SH50/50
Number of Blades per Pack	3
Recommended Replacement	Every 2 years
Product Dimensions	2.13 x 2.36 x 1.22 inches
Weight	0.7 ounces
Manufacturer	Philips
Recommended Uses	Wet Use, Dry Use

8. TROUBLESHOOTING

- **Shaver Pulling Hair:** This is a common sign that your blades are dull. Replace them immediately with new SH50/50 blades.
- **Less Effective Shave:** If your shaver isn't providing the close shave it once did, ensure the blades are clean and consider replacing them if they are older than 2 years.
- **Blades Not Fitting:** Double-check that you have purchased the correct SH50/50 model for your Philips Series 5000 shaver. Ensure proper alignment during installation.

9. WARRANTY & SUPPORT

For warranty information, technical support, or further assistance, please refer to the official Philips website or contact Philips customer service directly. Keep your purchase receipt as proof of purchase.

[Visit Philips Official Website](#)