

Manuals.plus /

› Windhager /

› Windhager Lamella Curtain 100 x 220 cm - User Manual

## Windhager 100 x 220 cm

# Windhager Lamella Curtain 100 x 220 cm User Manual

Model: 100 x 220 cm | Brand: Windhager

## 1. PRODUCT OVERVIEW

---

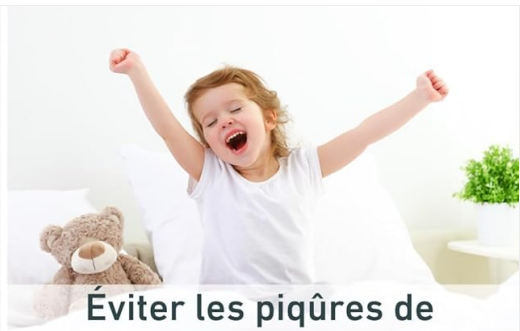
The Windhager Lamella Curtain is designed to provide effective insect protection for your doors, allowing for ventilation without unwanted pests. It features a practical design for easy installation and removal.

### Key Features:

- Lamella curtain made of four overlapping polyester strips.
- Equipped with pre-mounted weighting strips (66 g) for proper hanging.
- Easy attachment using hook-and-loop tape and a protective cover.
- Designed for quick removal at any time.
- Individually adjustable in both width and height to fit various door sizes.

# PROTÉGEZ VOTRE MAISON

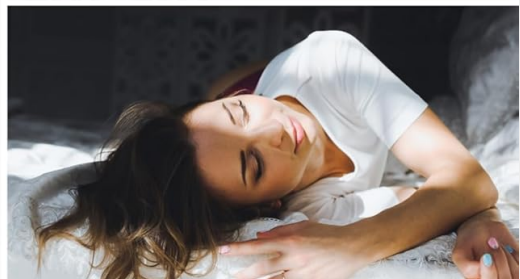
contre les insectes et les animaux rampants



Éviter les piqûres de moustiques



Manger, cuisiner, aérer sans être dérangé



dormir en paix

**WINDHAGER**  
HOME & GARDEN

*Image: Woman easily passing through the installed Windhager Lamella Curtain on a door, demonstrating its functionality for protecting your home against insects and crawling animals, allowing for undisturbed ventilation and peaceful sleep.*

## 2. PACKAGE CONTENTS

Please ensure all the following components are present in your package:

- 100 cm hook-and-loop tape
- 4 polyester fabric lamellas
- Pre-assembled 65 g weighting strip
- Instructions for individual shortening
- Easy installation guide for hook-and-loop tape method
- Information on removable design

## 3. SETUP AND INSTALLATION

Follow these steps for a secure and effective installation of your lamella curtain. This product is designed for drill-free mounting, making it ideal for rental apartments.

### 3.1 Preparation:

1. **Measure Your Door Frame:** Ensure your door frame dimensions are suitable for the 100 x 220 cm curtain. The curtain is adjustable in width and height.
2. **Clean the Surface:** Thoroughly clean the area of the door frame where the hook-and-loop tape will be applied. Ensure it is free of dust, grease, and moisture for optimal adhesion.
3. **Prepare Lamellas:** The weighting strips are pre-mounted. If necessary, shorten the lamellas individually to fit your door height.

## TOILE DE HAUTE

qualité

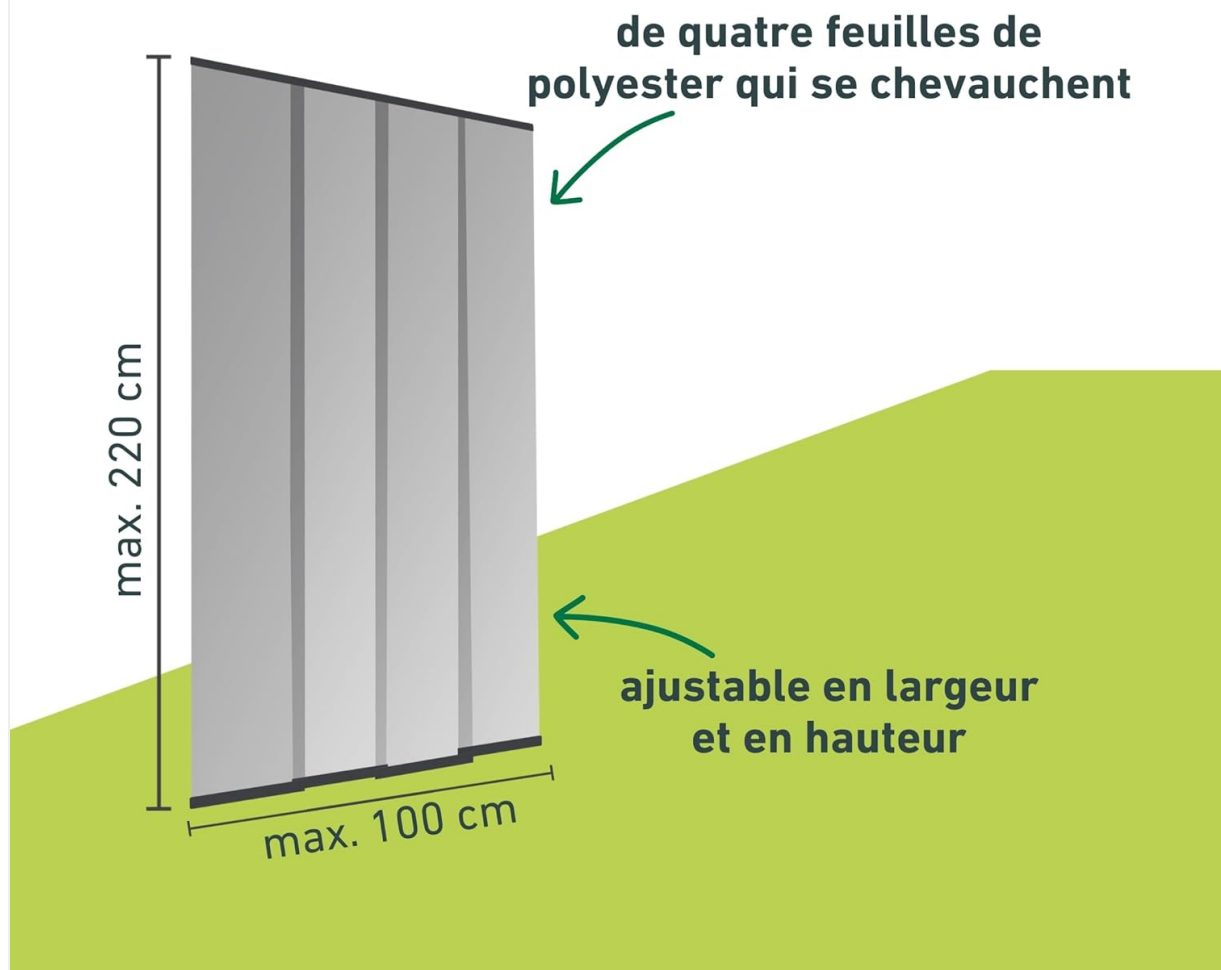
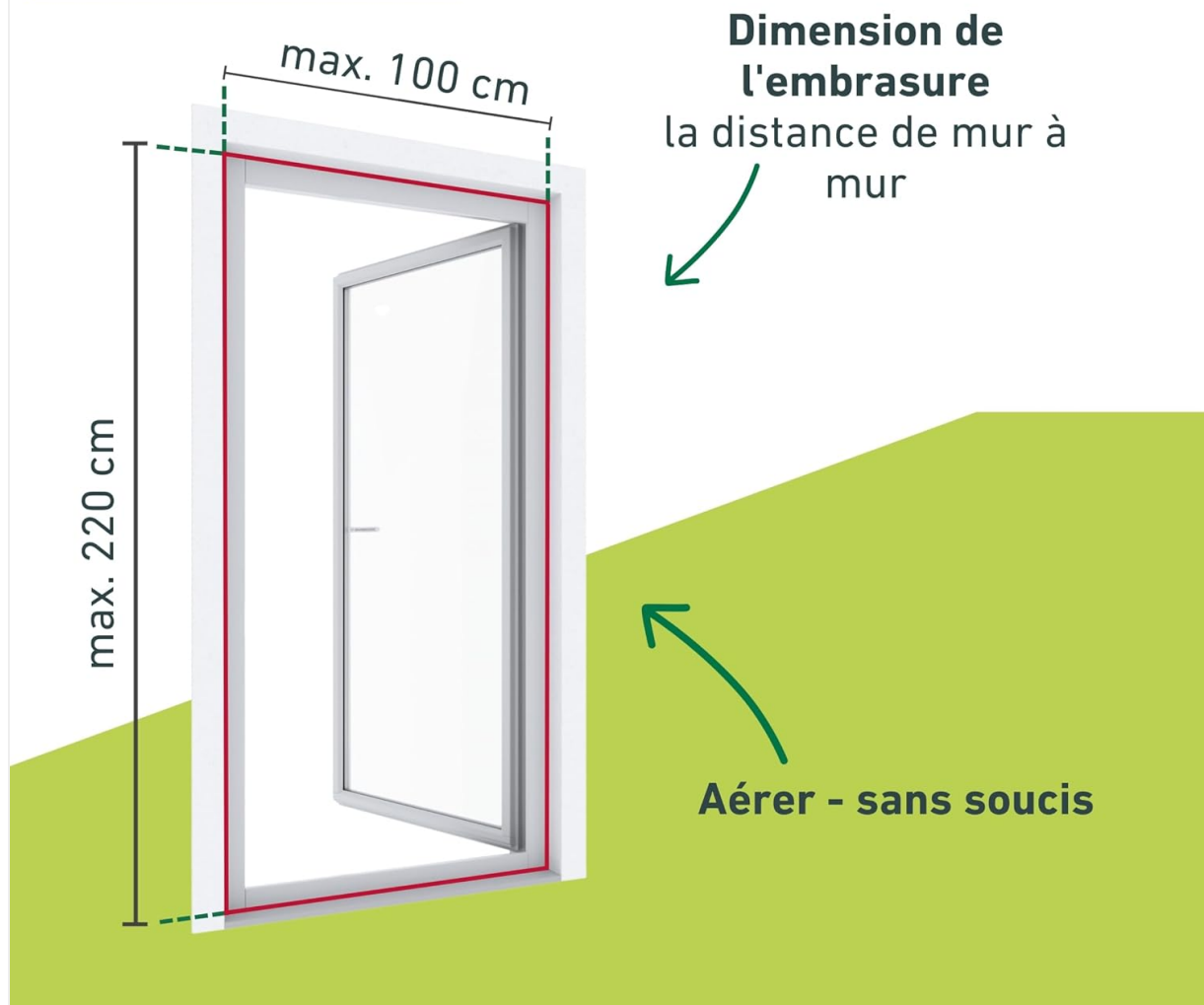


Image: Diagram illustrating the maximum dimensions of the Windhager Lamella Curtain: 100 cm width and 220 cm height. The curtain is made of four overlapping polyester sheets and is adjustable.

# LA PROTECTION ADÉQUATE

pour vos fenêtres



*Image: Diagram showing how to measure the door frame for the lamella curtain installation, emphasizing the embrasure dimension (wall-to-wall distance) for adequate protection and worry-free ventilation.*

## 3.2 Installation Steps:

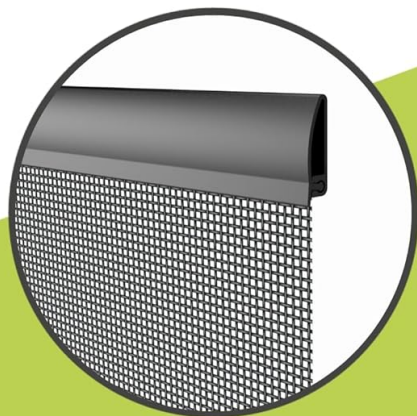
1. **Apply Hook-and-Loop Tape:** Peel the protective backing from the adhesive side of the hook-and-loop tape. Carefully align and press the tape firmly onto the clean door frame. Ensure it is straight and level.
2. **Attach Lamellas:** Align the top edge of each lamella with the hook-and-loop tape on the door frame. Press firmly along the entire length to ensure a secure attachment. The lamellas should overlap slightly.
3. **Secure Weighting Strips:** The pre-mounted weighting strips at the bottom of each lamella ensure they hang straight and close properly after passage.

# PROTECTION RAPIDE ET SÛRE

contre les insectes

**idéal pour les  
appartements en  
location**

montage sans perçage  
sur le cadre de la porte  
avec du Velcro

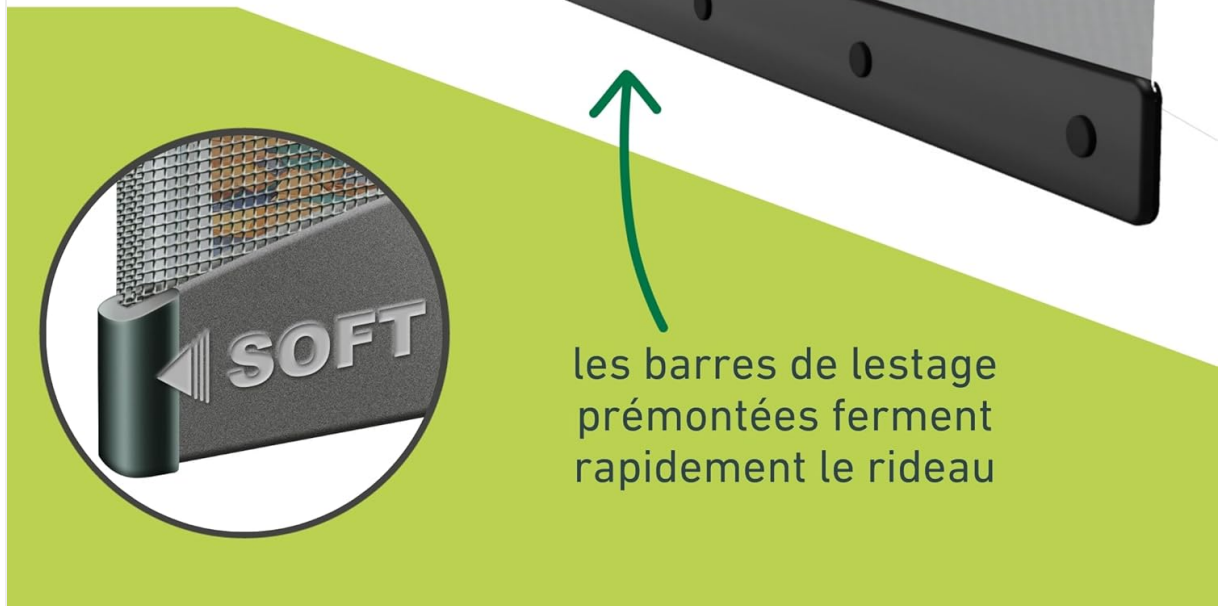


**faible profondeur  
d'installation**  
ne prend que 5 mm  
d'espace

*Image: Detailed image showing the drill-free installation method using hook-and-loop tape on the door frame, highlighting its low installation depth (only 5 mm) and suitability for rental apartments.*

## PROTECTION

fiable



les barres de lestage  
prémontées ferment  
rapidement le rideau

*Image: Close-up view of the pre-mounted weighting strips at the bottom of the lamellas, which quickly close the curtain for reliable protection.*

## 4. OPERATING INSTRUCTIONS

The Windhager Lamella Curtain is designed for simple and convenient use.

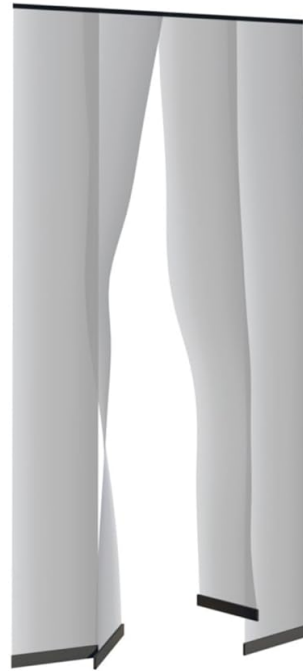
- **Passage:** Simply walk through the overlapping lamellas. The weighting strips will ensure the lamellas fall back into place, maintaining insect protection.
- **Ventilation:** Enjoy fresh air without concerns about insects entering your home. The curtain allows for continuous airflow.
- **Removal:** The curtain can be easily detached from the hook-and-loop tape for cleaning, storage, or when not needed.

# POUR DES JOURNÉES D'ÉTÉ

## en toute tranquillité

montage sans perçage  
et peu encombrant idéal  
pour les appartements  
en location

**sans insectes - sans  
poison ni produits  
chimiques**



**WINDHAGER**  
HOME & GARDEN

une entreprise familiale  
autrichienne



*Image: The lamella curtain parted, illustrating its effectiveness in keeping insects out without poison or chemicals, ensuring tranquil summer days.*

## 5. MAINTENANCE

---

To ensure the longevity and effectiveness of your Windhager Lamella Curtain, follow these simple maintenance guidelines:

- **Cleaning:** The polyester lamellas can be gently wiped with a damp cloth to remove dust and light dirt. Avoid harsh chemicals or abrasive cleaners.
- **Storage:** When not in use, especially during colder months, detach the curtain from the door frame. Fold or roll the lamellas carefully and store them in a dry, clean place to prevent damage.
- **Hook-and-Loop Tape:** Periodically check the hook-and-loop tape for debris or wear. Clean any lint or dirt from the hooks and loops to maintain strong adhesion.

## 6. TROUBLESHOOTING

---

If you encounter any issues with your Windhager Lamella Curtain, refer to the following common solutions:

Problem	Possible Cause	Solution
Curtain falls down or does not stick	Surface not clean; insufficient pressure during application; tape worn out.	Ensure door frame is clean and dry before applying tape. Apply firm, even pressure. Replace hook-and-loop tape if worn.
Lamellas twist or leave gaps	Improper alignment; strong drafts; weighting strips not effective.	Re-align lamellas to ensure proper overlap. Minimize strong drafts if possible. Check if weighting strips are correctly positioned.
Difficulty walking through	Lamellas too tight or overlapping excessively.	Adjust the positioning of the lamellas to allow for easier passage while maintaining insect protection.

## 7. SPECIFICATIONS

---

<b>Brand</b>	Windhager
<b>Product Type Name</b>	Lamella Curtain
<b>Model Dimensions</b>	100 x 220 cm
<b>Color</b>	Grey (Anthracite)
<b>Material</b>	Polyester
<b>Style</b>	Modern
<b>Assembly Required</b>	Yes
<b>Manufacturer</b>	Windhager
<b>Country of Origin</b>	Italy
<b>Number of Units</b>	1

## 8. WARRANTY AND SUPPORT

---

For detailed technical information, assembly videos, or step-by-step instructions, please visit the official Windhager online consultant or contact customer support.

If you have questions about the product or require assistance, please contact Windhager customer service through their official website or the retailer where the product was purchased.