

Dorman 901-152

Dorman 901-152 Tailgate Release Switch Instruction Manual

1. PRODUCT OVERVIEW

The Dorman 901-152 Tailgate Release Switch is a direct replacement component designed to restore the functionality of your vehicle's tailgate release mechanism. This switch is engineered to match the fit and performance of the original equipment on specified applications, ensuring reliable operation and durability.

Compatibility: This part is compatible with the following vehicles:

- Chevrolet HHR: 2006, 2007, 2008, 2009, 2010, 2011
- GMC Envoy XUV: 2004, 2005

Always verify fitment for your specific vehicle make, model, and trim level before installation.



Figure 1.1: Top-down view of the Dorman 901-152 Tailgate Release Switch, showing the button and connector.

2. INSTALLATION INSTRUCTIONS

Installation of the Dorman 901-152 Tailgate Release Switch typically involves a direct replacement process. Basic automotive repair knowledge and tools are recommended. If you are unsure about any step, consult a qualified mechanic.

2.1 Safety Precautions

- Ensure the vehicle is parked on a level surface with the parking brake engaged.
- Turn off the vehicle's ignition and remove the key.
- Disconnect the negative terminal of the vehicle's battery to prevent electrical shorts during installation.
- Wear appropriate personal protective equipment, such as gloves and eye protection.

2.2 Removal of Existing Switch

1. Access the tailgate release switch. This may require removing interior trim panels or exterior components depending on your vehicle model. Refer to your vehicle's service manual for specific access procedures.
2. Locate the existing tailgate release switch and its electrical connector.
3. Carefully disconnect the electrical connector from the old switch.
4. Remove any fasteners (screws, clips, etc.) securing the old switch in place.
5. Gently remove the old tailgate release switch from its mounting location.

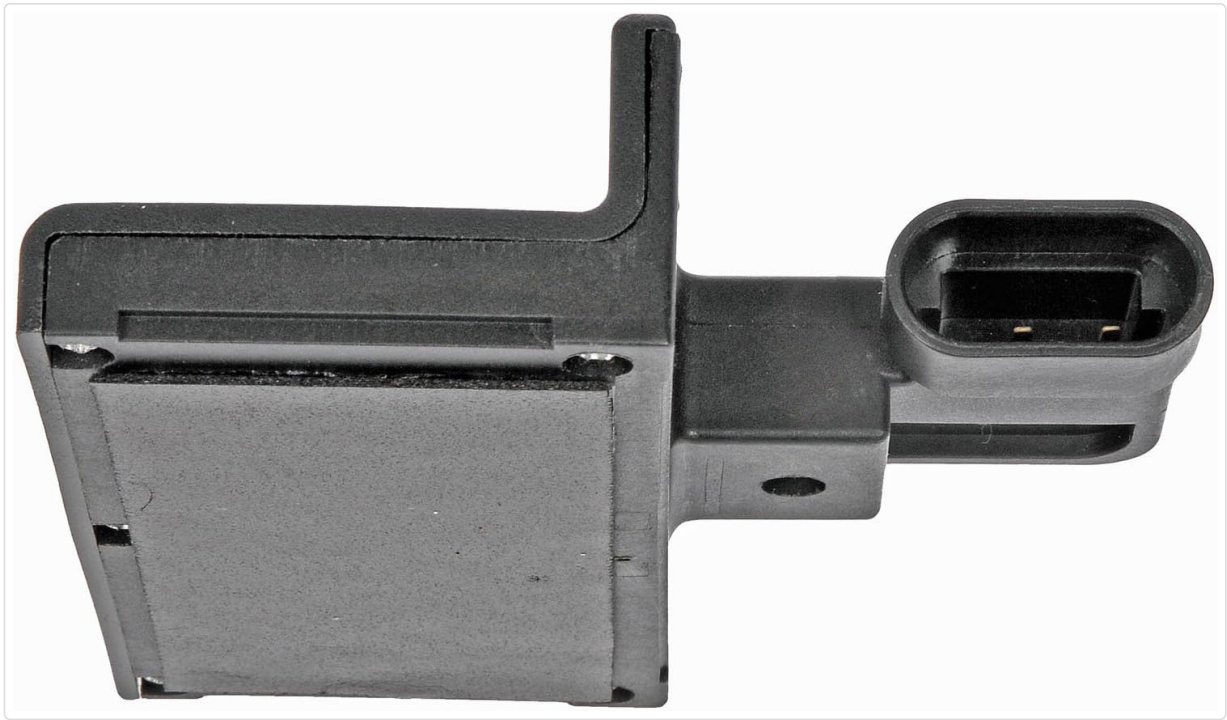


Figure 2.1: Front view of the switch, highlighting the electrical connector.

2.3 Installation of New Switch

1. Position the new Dorman 901-152 Tailgate Release Switch into the designated mounting location.
2. Secure the new switch using the original fasteners. Ensure it is firmly seated.
3. Connect the vehicle's electrical harness to the new switch. Ensure the connection is secure and fully seated.
4. Reinstall any trim panels or components that were removed to access the switch.
5. Reconnect the negative terminal of the vehicle's battery.

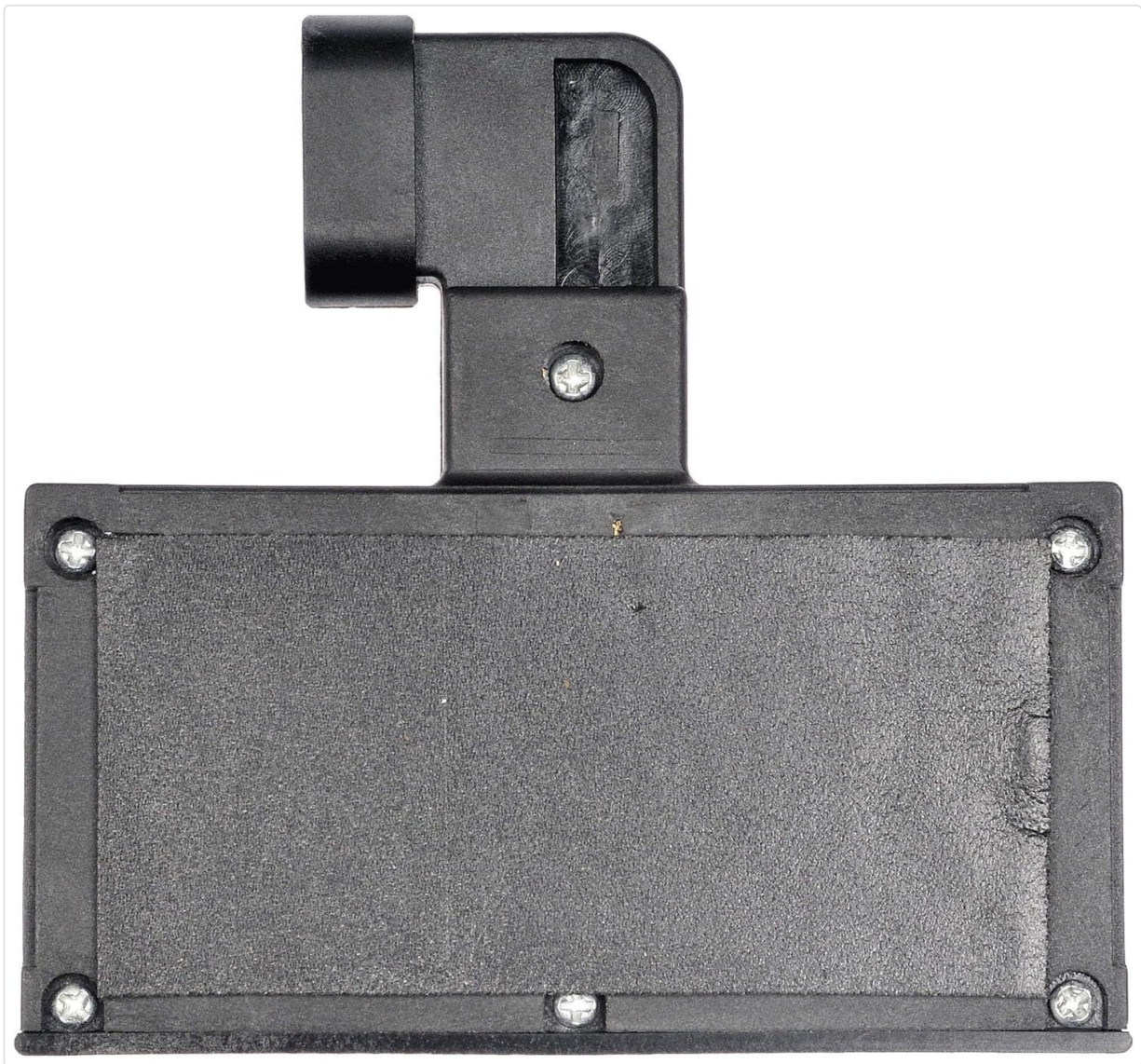


Figure 2.2: Back view of the switch, illustrating potential mounting points.

3. OPERATING INSTRUCTIONS

The Dorman 901-152 Tailgate Release Switch operates identically to the original equipment. To open the tailgate, simply press the button on the switch. Ensure the vehicle is unlocked or the appropriate unlock sequence has been performed for the tailgate to release.

4. MAINTENANCE

The tailgate release switch is designed for long-term reliability with minimal maintenance. However, periodic inspection can help ensure continued performance:

- **Cleaning:** Keep the exterior of the switch clean from dirt, debris, and moisture. Use a soft, damp cloth for cleaning. Avoid harsh chemicals or abrasive cleaners.
- **Inspection:** Periodically check the switch for any signs of physical damage, corrosion, or loose connections. Ensure the button operates smoothly without sticking.
- **Wiring:** Inspect the wiring harness connected to the switch for any fraying, cuts, or signs of wear.

5. TROUBLESHOOTING

If the tailgate release switch is not functioning correctly, consider the following troubleshooting steps:

- **No Response When Pressed:**

- Check if the vehicle's doors are unlocked. Some vehicles require the doors to be unlocked for the tailgate release to function.
- Verify the electrical connection to the switch is secure and free of corrosion.
- Inspect the vehicle's fuse box for a blown fuse related to the tailgate or trunk release. Refer to your vehicle's owner's manual for fuse locations.
- Test for power at the switch connector using a multimeter. If no power is present, the issue may be further up the electrical circuit.

- **Intermittent Operation:**

- This could indicate a loose or corroded electrical connection. Disconnect and reconnect the connector, ensuring it is clean and tight.
- Inspect the wiring for any damage that might cause intermittent contact.

- **Switch Feels Stiff or Stuck:**

- Clean around the button area to remove any accumulated dirt or debris.
- If the switch mechanism itself is physically damaged or worn, replacement may be necessary.

If these steps do not resolve the issue, it is recommended to consult a professional automotive technician.

6. SPECIFICATIONS

Feature	Detail
Model Number	901-152
Brand	Dorman
Operation Mode	ON-OFF
Contact Type	Normally Closed
Actuator Type	Push Button
Mounting Type	Panel Mount
Circuit Type	1-way
Item Dimensions (L x W x H)	4.1 x 3.8 x 2.4 inches
Item Weight	3.04 ounces
Material	Brass (Contact Material)
Color	Black
UPC	019495968573

7. WARRANTY INFORMATION

Dorman products are manufactured to high-quality standards and are backed by over a century of automotive experience. For specific warranty details regarding the Dorman 901-152 Tailgate Release

Switch, please refer to the official Dorman product warranty policy available on the manufacturer's website or contact Dorman customer service directly. Warranty terms and conditions may vary.

8. SUPPORT AND CONTACT

For additional support, technical assistance, or inquiries regarding the Dorman 901-152 Tailgate Release Switch, please visit the official Dorman website or contact their customer service department.

Dorman Brand Store: [Visit the Dorman Store on Amazon](#)