

Diplomat 125EK77DRUG

Diplomat 60-Minute Fireproof Safe 125EK77DRUG User Manual

Model: 125EK77DRUG | Brand: Diplomat

1. INTRODUCTION

This manual provides essential information for the safe and effective use of your Diplomat 125EK77DRUG 60-Minute Fireproof Safe. Please read these instructions carefully before installation and operation to ensure proper functionality and security. Keep this manual for future reference.



Image: Front view of the Diplomat 125EK77DRUG Fireproof Safe, showcasing its white exterior and electronic keypad.

2. PRODUCT FEATURES

- **High-Security Double Lock System:** Equipped with both a keypad lock for the outer door and a cylinder lock for the inner door, providing enhanced security.
- **60-Minute Fire Resistance:** Certified to protect contents from fire for up to 60 minutes.
- **Programmable User Codes:** Allows setting two different user codes, each 4 to 16 digits long.
- **Automatic Lockout:** The safe automatically locks for a period after 5 consecutive incorrect code entries, preventing unauthorized access.
- **Anti-Peeping Function:** Enables users to input random numbers before or after the actual code to prevent others from discerning the true code.
- **Robust Construction:** Built with fire-resistant concrete for a sturdy body that passes fire and impact tests.
- **Internal Storage:** Includes one adjustable shelf for organized storage.
- **Key Hooks:** Convenient key hooks located on the inside of the door.

多様な防犯機能も搭載したデザイン金庫



デジタルメディアA耐火

DVD (紙パック)、USBドライブ、メモリースティック



急加熱、衝撃・落下テストに合格



テンキー+シリンダーキーの ダブルロック



暗証番号入力前後に 任意の数字を打ち込み可能

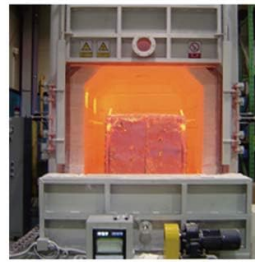


Image: Visual representation of the safe's security features, including 60-minute fire resistance, digital media fire protection, rapid heating/impact/drop test compliance, double lock, and anti-peeping function.

強靱なボディ

確かな安心感をお届けする
耐火・耐水・堅牢性

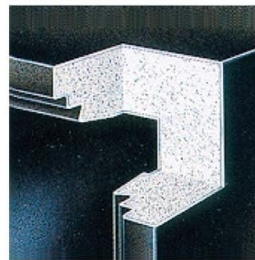
世界100カ国以上に
輸出されている
ディプロマット製品は、
世界の厳しい検査機関によって
その品質が証明されています。



耐火試験：金庫を炉内に入れ、規定に従い927度まで加熱。庫内温度は177度以下に保たれなくてはならない。更に過酷なスウェーデンSP規格にも合格。規定に従い1010度まで加熱。金庫内温度は150度以下。



急加熱・衝撃落下併用試験：1093度に加熱された炉内に金庫を入れ規定時間内加熱。炉内より金庫を取り出し、4分以内に9.1mの高さよりレンガの敷かれたコンクリート床に落下。再び金庫を上下逆さまにして炉内に入れ843度にて規定に従い加熱。破損なく施錠されたままで炉内に入れた新聞紙の判読が可能。



ディプロマット独自の耐火材STYRONITE Fを全耐火製品に使用。

世界の様々な規格に合格した信頼の品質 *diplomat* SAFE



ISO 9001



SP(Sweden)



UL(USA)



GOST(Russia)



KS(Korea)



ECB・S(EU)



CE(EU)

Image: Diplomat safe undergoing fire testing and displaying various international certifications (ISO 9001, SP, UL, GOST, KS, ECB-S, CE), highlighting its robust body and quality.

3. SETUP

3.1 Unpacking and Placement

1. Carefully unpack the safe and ensure all accessories are present: 1 shelf, 2 keys (for each lock), AAA alkaline batteries (for initial operation check), instruction manual, and warranty card.
2. Choose a suitable location for your safe. It should be a flat, stable surface capable of supporting the safe's weight (38 kg).
3. Ensure there is enough space around the safe to fully open the door and access the contents.

3.2 Battery Installation

1. Locate the battery compartment on the keypad unit (typically behind a removable cover).
2. Insert the included AAA alkaline batteries, ensuring correct polarity (+/-).
3. Close the battery compartment cover securely. The keypad should now power on.

4. OPERATING INSTRUCTIONS

4.1 Opening the Safe

- **Using the Keypad:** Enter your programmed 4-16 digit user code. The indicator light will confirm successful entry. Turn the handle clockwise to open the outer door.
- **Using the Cylinder Key:** Insert the cylinder key into the inner lock and turn it to open the inner door.

4.2 Setting/Changing User Codes

Refer to the detailed instructions provided in the separate 'Operation Manual' included with your safe for specific steps on programming and changing user codes. This process typically involves pressing a program button, entering the new code, and confirming it.

4.3 Anti-Peeping Function

To enhance security and prevent others from observing your code, you can enter random digits before or after your actual 4-16 digit code. For example, if your code is '1234', you can enter '9871234567'. The safe will only recognize the correct sequence within the longer string of numbers.

4.4 Closing and Locking the Safe

Close both the inner and outer doors firmly. Turn the handle counter-clockwise to engage the outer door lock. The keypad will automatically lock the outer door once closed. Ensure both locks are engaged for maximum security.

使い易さにも
こだわりました

容量 24ℓ

重量 38kg



シリンダー付内扉



ドア裏には便利なキーフック



内寸 : W260×D292×H320mm



Image: Detailed view of the safe's external dimensions (W352 x D454 x H412 mm) and internal dimensions (W260 x D292 x H320 mm), along with an open view showing the inner door with cylinder lock and key hooks.

5. MAINTENANCE

5.1 Battery Replacement

When the low battery indicator appears on the keypad, or if the keypad becomes unresponsive, replace all AAA alkaline batteries immediately. Always use new, high-quality alkaline batteries.

5.2 Cleaning

Wipe the exterior of the safe with a soft, dry cloth. Do not use abrasive cleaners, solvents, or harsh chemicals, as these may damage the finish or electronic components.

5.3 Key Care

Keep your spare keys in a secure location, separate from the safe itself, and away from unauthorized access. Do not store spare keys inside the safe.

6. TROUBLESHOOTING

- **Safe does not open with code:**

- Check if batteries are low or dead. Replace them if necessary.
- Ensure you are entering the correct code. Try re-entering it slowly and carefully.
- If the anti-peeping function is used, ensure the correct code sequence is embedded.

- **Keypad is unresponsive:**

- Replace the batteries.
- If still unresponsive, contact customer support.

- **Safe is locked out after incorrect entries:**

- The safe will automatically lock for a period after 5 incorrect code entries. Wait for the lockout period to expire before attempting to enter the code again.

- **Door does not close/lock properly:**

- Ensure no obstructions are preventing the door from closing fully.
- Check that the locking bolts are retracting and extending smoothly.

7. SPECIFICATIONS

| Feature | Specification |
|-----------------------------|---------------------------------|
| Model Number | 125EK77DRUG |
| Brand | Diplomat |
| Color | White |
| External Dimensions (W×D×H) | 352 mm × 454 mm × 412 mm |
| Internal Dimensions (W×D×H) | 260 mm × 292 mm × 320 mm |
| Weight | 38 kg |
| Capacity | 24 Liters |
| Lock Type | Electronic Keypad, Cylinder Key |
| Fire Resistance | 60 Minutes |
| Material | Fire-resistant concrete |
| Number of Shelves | 1 |
| Batteries Required | Yes (AAA alkaline) |
| Country of Manufacture | Korea |

念には念を！ダブルドアで、さらに安心。
ハイセキュリティな装備満載の耐火金庫



サイズ 全2種類

容量
18ℓ

容量
24ℓ

Image: The Diplomat safe placed in a modern office setting, illustrating its compact size and aesthetic integration. Also shows available size options (18L and 24L).

8. WARRANTY AND SUPPORT

Diplomat is committed to providing reliable products and excellent customer service.

8.1 18-Month Guarantee

Your Diplomat safe comes with an 18-month guarantee from the date of purchase, covering manufacturing defects and malfunctions under normal use.

8.2 Fire Recovery Support

In the unfortunate event that your Diplomat fireproof safe is damaged by fire, Diplomat offers a free replacement safe of the same model. Please refer to your warranty card for specific terms and conditions regarding this service.

8.3 Customer Support

For any questions, technical assistance, or warranty claims, please contact Diplomat customer support. Refer to the contact information provided on your warranty card or the official Diplomat website.

購入後のサポートも充実

全製品安心の
18カ月保証



ディプロマット
火災補償サービス



万が一火災により耐火金庫が焼損した場合に、現在お使いの金庫と同等の金庫本体を無料にてお届けいたします。



Image: Diplomat's commitment to customer support, highlighting the 18-month guarantee and fire recovery support service.