

## Taylor 6700

# Taylor Big and Bold Wall Thermometer Model 6700 Instruction Manual

Model: 6700 | Brand: Taylor

## 1. PRODUCT OVERVIEW

The Taylor Big and Bold Dial Wall Thermometer offers a classic design suitable for both indoor and outdoor environments. It features a precision-made, factory-calibrated thermometer coil for accurate temperature readings. The construction is low-profile and high-impact, ensuring durability, while a clear view protective lens allows for easy reading from a distance. The graphics are UV-fade-resistant to withstand outdoor elements. Bold, easy-to-read numbers indicate temperature in 2-degree increments, with a coordinated red pointer showing the current temperature. No batteries are required for operation.



Figure 1: Front view of the Taylor Big and Bold Wall Thermometer, featuring a black frame and large, easy-to-read numbers.





## 2. KEY FEATURES

- **Classic Design:** Features a sleek bezel frame that integrates well with any indoor or outdoor decor.
- **Large Display:** An extra-large 13.25-inch display provides at-a-glance readings.
- **Durable Construction:** Equipped with a shatterproof lens designed to withstand harsh weather conditions.
- **Wide Temperature Range:** Precision thermometer coil measures temperatures from -60°F to 120°F (-50°C to 50°C).
- **Easy Mounting:** Includes a built-in hanger for secure installation.
- **No Batteries Required:** Operates mechanically without the need for external power.

# TAYLOR

## FEATURES



-  CALIBRATED FOR PRECISION ACCURACY
-  EASY-TO-READ
-  °F/°C FAHRENHEIT/CELSIUS
-  WEATHER RESISTANT CONSTRUCTION

6700 13.25" BIG & BOLD, BLACK THERMOMETER



Figure 2: Overview of key features including precision accuracy, easy-to-read F/C display, and weather-resistant construction.

### 3. SETUP AND INSTALLATION

- Select Location:** Choose a wall location that is out of direct sunlight. Direct sunlight or proximity to heat sources/large bodies of water can affect temperature accuracy.
- Prepare Mounting Points:** Two screws or nails (not included) are required. Place the first screw approximately 2.75 inches below the point where the top of the thermometer will be positioned. Ensure the screw or nail head protrudes approximately 0.25 inches.
- Second Mounting Point:** Place the second screw or nail 8 inches directly below the first.
- Mount Thermometer:** Carefully place the thermometer over the screw or nail heads using the built-in hangers on the back. Ensure it is securely mounted to prevent damage from wind or accidental falls.



Figure 3: Diagram illustrating the recommended mounting procedure with two screws or nails for stability.



Figure 4: Example of the thermometer installed in an outdoor setting, suitable for patios or gardens.

#### 4. OPERATION

The Taylor Big and Bold Wall Thermometer operates mechanically using a bimetallic coil, requiring no batteries or external power. Once properly installed in a suitable location (away from direct sunlight or heat sources), the red pointer will indicate the current ambient temperature in both Fahrenheit and Celsius. Allow some time for the thermometer to acclimate to its environment for the most accurate reading.

#### 5. MAINTENANCE

To maintain the appearance and functionality of your thermometer, simply wipe it clean with a soft, damp cloth as needed. Avoid using harsh chemicals or abrasive cleaners, which could damage the finish or the clear protective lens. Regular cleaning will help ensure continued readability.

#### 6. TROUBLESHOOTING

##### Inaccurate Readings:

- **Check Placement:** Ensure the thermometer is not in direct sunlight, near a heat source (like a grill or vent), or a large body of water. These factors can significantly skew readings.

- **Manual Calibration (if necessary):** If the needle appears stuck or consistently inaccurate after proper placement, it may require manual adjustment. Carefully remove the clear plastic lens by gently prying the clips from the back. The needle is attached to a bimetallic spring. Gently pull the needle outwards slightly to free it from any binding against the face. Then, while holding the bimetallic spring mechanism on the backside, carefully move the needle to align with a known accurate temperature (e.g., from a calibrated digital thermometer or a reliable weather source). Reattach the lens securely.

**Needle Not Moving:**

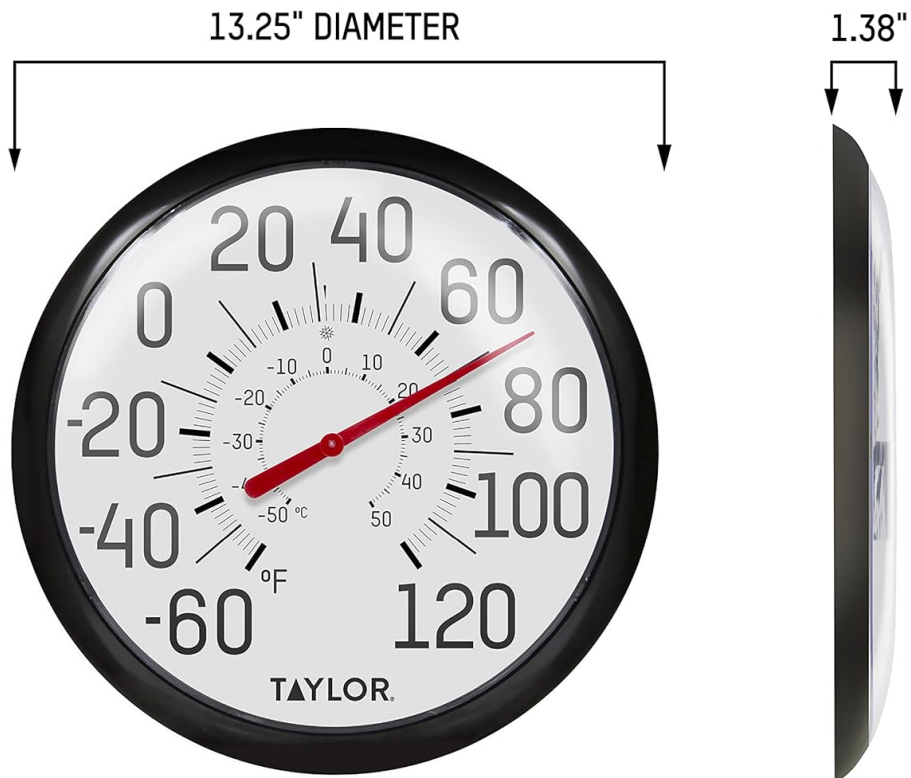
- This can occur if the needle is pressed too tightly against the thermometer's face. Follow the manual calibration steps above to gently pull the needle outwards, allowing it to move freely.

**7. SPECIFICATIONS**

Model Number	6700
Product Dimensions	13.25 x 13.25 x 1.75 inches
Item Weight	11.2 ounces
Temperature Range	-60°F to 120°F (-50°C to 50°C)
Display Type	Analog
Outer Material	Plastic or Metal
Special Feature	High Accuracy, Large Display, Ultra Clear Screen
Included Components	Thermometer
Product Care	Wipe Clean

**TAYLOR**

## DIMENSIONS



**6700 13.25" BIG & BOLD, BLACK THERMOMETER**



Figure 5: Detailed dimensions of the 13.25-inch diameter thermometer.



Figure 6: Side profile view of the thermometer, highlighting its slim design.

## 8. WARRANTY AND SUPPORT

---

This Taylor product is covered by a **One (1) Year Limited Warranty**. This warranty ensures the product is free from defects in material or workmanship. For warranty claims, repair, or replacement, please contact Taylor Precision Products. For additional support and product information, visit the official website:

[www.taylorusa.com](http://www.taylorusa.com)

## 9. OFFICIAL PRODUCT VIDEOS

---

### Taylor - Life Measured

Your browser does not support the video tag.


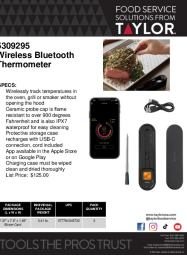

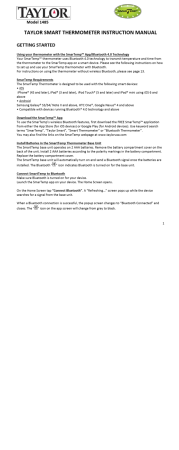

Video 1: An overview of Taylor's commitment to precision measurement and innovative designs across various product categories.

### Big and Bold Dial Thermometer

Your browser does not support the video tag.

Video 2: A product-specific video showcasing the features and design of the Taylor Big and Bold Dial Thermometer.

## Related Documents - 6700

	<p><a href="#">Taylor 5309295 Waterproof Wireless Meat Thermometer with Charging Case Instruction Manual</a></p> <p>Instruction manual for the Taylor 5309295 Waterproof Wireless Meat Thermometer with Charging Case, detailing setup, usage, product specifications, care, precautions, FCC compliance, and warranty information.</p>
	<p><a href="#">Taylor 5309295 Wireless Bluetooth Thermometer - Features and Usage</a></p> <p>Detailed information on the Taylor 5309295 Wireless Bluetooth Thermometer, including its specifications, features, multiple cooking uses, ease of cleaning, and system pairing instructions. Wirelessly track temperatures in ovens, grills, and smokers with this IPX7 waterproof and rechargeable device.</p>
	<p><a href="#">Taylor Five Star Wireless Thermometer with Remote Pager Plus Timer Instruction Manual</a></p> <p>This instruction manual provides detailed guidance for the Taylor Five Star Wireless Thermometer with Remote Pager plus Timer (models 1479, 1479-21, 532, 532-77). Learn setup, operation, programming, timer functions, clock settings, care, precautions, and troubleshooting for your digital cooking thermometer.</p>
	<p><a href="#">Taylor Smart Thermometer Model 1485 Instruction Manual</a></p> <p>User guide for the Taylor Model 1485 Smart Thermometer, detailing setup, Bluetooth connectivity with the SmarTemp app, cooking modes, timer functions, history tracking, and troubleshooting.</p>
	<p><a href="#">Taylor Five Star Wireless Thermometer with Remote Pager plus Timer Instruction Manual</a></p> <p>Instruction manual for the Taylor Five Star Wireless Thermometer with Remote Pager plus Timer (Models 1479/1479-21/532/532-77). This guide covers setup, battery replacement, operation, programming, cooking procedures, timer functions, clock settings, care, precautions, and warranty information.</p>

**1479**  
Wireless Thermometer  
with Remote Pager plus Timer

Leading the Way in Accuracy™

[Taylor 1479 Wireless Thermometer with Remote Pager plus Timer Instruction Manual](#)

Comprehensive instruction manual for the Taylor 1479 Wireless Thermometer with Remote Pager plus Timer. Learn how to use its wireless monitoring, pager alerts, timer functions, and preset cooking temperatures. Includes setup, operation, care, and warranty information.