

Manuals+

[Q & A](#) | [Deep Search](#) | [Upload](#)

manuals.plus /

- › [Dickson](#) /
- › [Dickson C662 Chart Instruction Manual](#)

Dickson C662

Dickson C662 Chart Instruction Manual

Model: C662 | Brand: Dickson

PRODUCT OVERVIEW

The Dickson C662 Chart is a specialized replacement chart designed for use with compatible circular chart recorders. This 6-inch diameter chart is calibrated for 24-hour recording cycles and features a measurement range of 0 to +500 units, making it suitable for various industrial and scientific data logging applications. It serves as a consumable component essential for accurate and continuous data visualization.

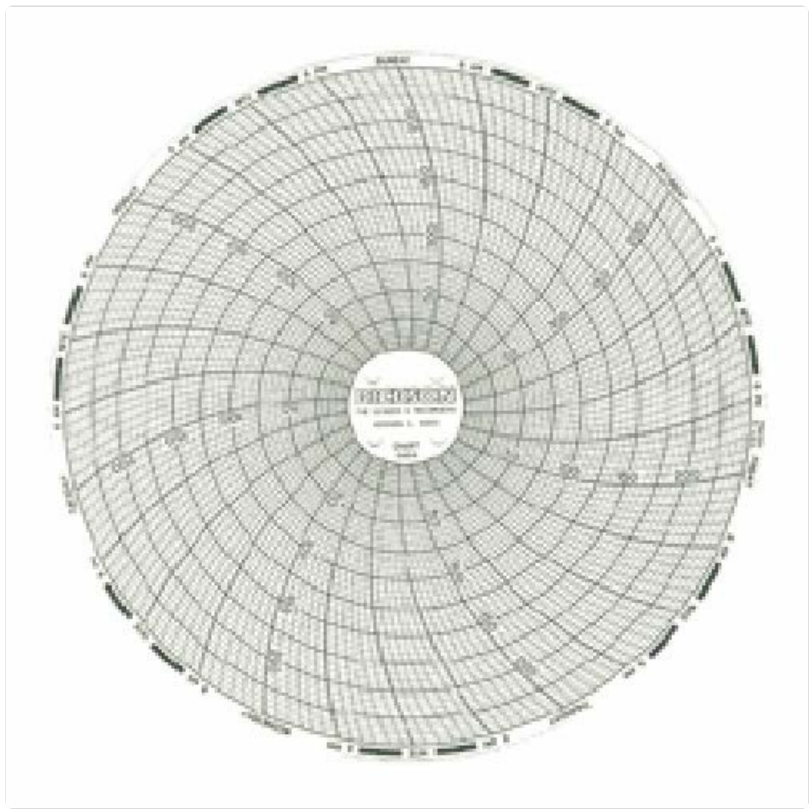


Figure 1: Dickson C662 6-inch circular chart. This image displays the Dickson C662 circular chart, designed for 24-hour recording. The chart features a detailed grid with radial and concentric lines, indicating time and measurement values. The center of the chart includes the 'DICKSON' brand name and model information. The outer edge is marked with time increments, and the inner area shows measurement scales ranging from 0 to +500.

SETUP AND INSTALLATION

Proper installation of the Dickson C662 chart is crucial for accurate data recording. Follow these steps to replace or install a new chart in your compatible circular chart recorder:

1. **Power Off:** Before handling the chart recorder, ensure the device is powered off or disconnected from its power source to prevent accidental operation or damage.
2. **Open Recorder:** Carefully open the chart recorder's cover or access panel to expose the chart mounting mechanism.
3. **Remove Old Chart (if applicable):** If replacing an existing chart, gently lift the pen arm(s) away from the chart surface and remove the used chart from the center hub. Dispose of the used chart responsibly.
4. **Align New Chart:** Take a new Dickson C662 chart. Locate the center hole and align it with the chart recorder's center hub. Ensure the chart lies flat and is properly seated.
5. **Set Time/Date:** Rotate the chart until the current time and date on the chart align with the recorder's time indicator or pen position. This ensures accurate time-based recording.
6. **Lower Pen Arm(s):** Carefully lower the pen arm(s) back onto the chart surface. Ensure the pen tip makes proper contact without excessive pressure.
7. **Close Recorder:** Securely close the chart recorder's cover or access panel.
8. **Power On:** Reconnect power to the chart recorder and verify that the chart is rotating correctly and the pen(s) are marking as expected.

Note: Always refer to your specific chart recorder's manual for detailed installation instructions, as procedures may vary slightly between models.

OPERATION GUIDELINES

Once installed, the Dickson C662 chart operates in conjunction with your chart recorder to provide a visual record of measured parameters. To ensure optimal performance and accurate data capture:

- **Regular Monitoring:** Periodically check the chart recorder to ensure the chart is rotating smoothly and the pen(s) are consistently marking.
- **Pen Condition:** Verify that the pen tips are clean and free from clogs. Replace pens as needed to maintain clear and legible traces.
- **Environmental Conditions:** Ensure the chart recorder is operating within its specified environmental conditions (temperature, humidity) to prevent chart warping or ink issues.
- **Chart Replacement:** Replace the chart promptly at the end of its 24-hour cycle or when it is full to ensure continuous data logging.

MAINTENANCE AND STORAGE

Proper handling and storage of Dickson C662 charts will preserve their quality and ensure readiness for use:

- **Storage:** Store unused charts in their original packaging in a cool, dry place, away from direct sunlight, excessive heat, or humidity. Extreme conditions can cause the paper to warp or degrade.
- **Handling:** Handle charts by their edges to avoid fingerprints, creases, or damage to the recording surface.
- **Cleanliness:** Keep the chart recorder's interior, especially the chart mounting area and pen arms, clean to prevent debris from interfering with chart rotation or pen movement.

TROUBLESHOOTING

While the Dickson C662 chart is a passive component, issues related to its interaction with the recorder can occur. Consider the following if you encounter problems:

- **Chart Not Rotating:**
 - Ensure the chart is properly seated on the center hub and not obstructed by the pen arm or recorder housing.
 - Check the chart recorder's motor or drive mechanism for proper function.
- **Pen Not Marking:**
 - Verify the pen arm is lowered and making contact with the chart.
 - Check the pen for dried ink or clogs. Replace the pen if necessary.
 - Ensure the chart surface is clean and free of oils or debris.
- **Inaccurate Readings/Time:**
 - Confirm the chart was correctly aligned with the current time during installation.
 - Check the chart recorder's calibration and timekeeping mechanism.

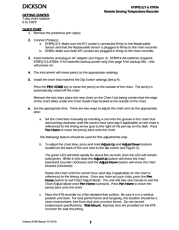
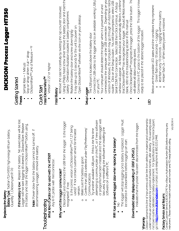
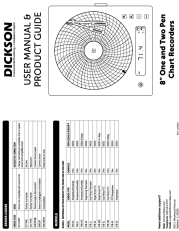



SPECIFICATIONS

Attribute	Detail
Model Number	C662
Brand	Dickson
Chart Diameter	6 inches
Recording Period	24 Hours
Measurement Range	0 to +500
Package Dimensions	3.94 x 3.94 x 3.94 inches
Item Weight	10.56 ounces
Manufacturer	Thomas Scientific
ASIN	B00VGDSFDO
Date First Available	March 31, 2015

WARRANTY AND SUPPORT

As the Dickson C662 Chart is a consumable item, specific warranty information typically applies to the chart recorder itself rather than the individual charts. For details regarding product warranty, returns, or technical support, please refer to the documentation provided with your chart recorder or contact the manufacturer of the chart recorder directly.

For inquiries related to the Dickson C662 charts, please contact your supplier or the manufacturer, Thomas Scientific, for assistance.

	<p>Dickson KT8 Series Temperature Recorders: User Manual and Quick Start Guide</p> <p>Comprehensive guide for Dickson KT8P, KT8P2, KT8P3, and KT856 series remote sensing temperature recorders. Covers setup, operation, alarms, dip switches, calibration, troubleshooting, and warranty information.</p>
	<p>DICKSON Process Logger HT350: User Guide and Setup</p> <p>Comprehensive guide to setting up, using, and troubleshooting the DICKSON Process Logger HT350, including software installation, data logging, and warranty information.</p>
	<p>Dickson 8" One and Two Pen Chart Recorder User Manual & Product Guide</p> <p>This user manual and product guide provides detailed instructions for operating and configuring Dickson 8" One and Two Pen Chart Recorders, including setup, menu options, error codes, and model specifications.</p>
	<p>ThermoServer / ThermoClient Training Course Overview DICKSON</p> <p>Detailed overview of the DICKSON ThermoServer / ThermoClient training course, covering system architecture, hardware, software, maintenance, troubleshooting, and learning objectives. Suitable for new users and administrators.</p>
	<p>Dickson Mapping Suite Quick Start Guide: Getting Started with Your Mapping Kit</p> <p>A quick start guide from Dickson to help users set up their Mapping Suite kit, including the RFG-003 Gateway, RFL Data Loggers, and Replaceable Sensors. Learn how to log in, set up hardware, and claim loggers.</p>
	<p>Dickson DWE Internet-Connected Data Logger Quick-Start Guide</p> <p>This quick-start guide provides setup and connection instructions for the Dickson DWE internet-connected data logger, enabling users to get started with Ethernet or Wi-Fi connectivity and register their device on the DicksonOne platform for online data viewing and alarm configuration.</p>

