

LOBKIN S19

LOBKIN S19 Wireless Headset User Manual

Model: S19

1. INTRODUCTION

Thank you for purchasing the LOBKIN S19 Wireless Headset. This manual provides detailed instructions for the proper use, setup, and maintenance of your new headset. The LOBKIN S19 offers versatile audio experiences with Bluetooth 5.0 connectivity, FM radio, and TF card playback, all within a comfortable, foldable design.



Image: The LOBKIN S19 Wireless Headset in black, showcasing its over-ear design and adjustable headband.

2. PACKAGE CONTENTS

Please check the package contents upon unboxing to ensure all items are present:

- LOBKIN S19 Wireless Headset
- USB Charging Cable
- 3.5mm Audio Cable
- User Manual (this document)

3. PRODUCT OVERVIEW

Familiarize yourself with the various parts and controls of your LOBKIN S19 headset:



Image: Detailed diagram of the LOBKIN S19 headset's controls and ports, including buttons for FM, Bluetooth, volume, track control, and ports for TF card, micro charging, and audio input.

1. **FM & Bluetooth Button:** Press to switch between FM Radio and Bluetooth modes.
2. **Play/Pause Button:** Press to play or pause audio. Also used for answering/ending calls.
3. **Volume Up / Next Song Button:** Short press for next track, long press to increase volume.
4. **Volume Down / Previous Song Button:** Short press for previous track, long press to decrease volume.
5. **TF Card Slot:** Insert a TF (MicroSD) card for MP3 playback.
6. **Power On/Off Button:** Long press to power the headset on or off.
7. **Indicator Light:** Displays status (pairing, connected, charging).
8. **Microphone (Mic):** Built-in microphone for hands-free calls.
9. **Micro Charging Port:** Connect the USB charging cable here.
10. **Audio Input (AUX):** Connect the 3.5mm audio cable for wired listening.

4. CHARGING THE HEADSET

Before first use, fully charge the headset. A full charge takes approximately 2.5 hours.

1. Connect the small end of the USB charging cable to the Micro Charging Port (9) on the headset.
2. Connect the larger end of the USB charging cable to a USB power source (e.g., computer USB port, USB

wall adapter).

3. The Indicator Light (7) will illuminate during charging and turn off or change color when fully charged (refer to specific light behavior in the "Indicator Light Status" section if available, otherwise assume standard behavior).

A fully charged headset provides approximately 14 hours of music playback or 16 hours of call time.



Image: Visual representation of the LOBKIN S19's battery performance, showing 16 hours calling time, 14 hours music time, 2.5 hours charging time, and 300 hours standby time.

5. SETUP AND CONNECTION

5.1. Bluetooth Pairing

To connect your LOBKIN S19 headset wirelessly via Bluetooth:

1. **Power On:** Long press the Power On/Off Button (6) until the Indicator Light (7) flashes blue and red, indicating pairing mode.
2. **Activate Bluetooth:** On your device (smartphone, tablet, computer), enable Bluetooth and search for available devices.
3. **Select Headset:** From the list of devices, select "LOBKIN S19" (or similar name).
4. **Confirm Connection:** Once paired, the Indicator Light (7) will typically flash blue slowly or remain solid

blue. A voice prompt may confirm "Connected".

5. **Reconnection:** The headset will automatically attempt to reconnect to the last paired device when powered on.

5.2. Wired Connection (AUX Mode)

Use the included 3.5mm audio cable for a wired connection, which does not require battery power.

1. Insert one end of the 3.5mm audio cable into the Audio Input (AUX) port (10) on the headset.
2. Insert the other end of the 3.5mm audio cable into the audio output jack of your device.
3. The headset will automatically switch to AUX mode.

6. OPERATING INSTRUCTIONS

6.1. Power On/Off

- **Power On:** Long press the Power On/Off Button (6) for approximately 3 seconds.
- **Power Off:** Long press the Power On/Off Button (6) for approximately 3 seconds.

6.2. Music Playback (Bluetooth / TF Card)

- **Play/Pause:** Press the Play/Pause Button (2).
- **Next Track:** Short press the Volume Up / Next Song Button (3).
- **Previous Track:** Short press the Volume Down / Previous Song Button (4).
- **Volume Up:** Long press the Volume Up / Next Song Button (3).
- **Volume Down:** Long press the Volume Down / Previous Song Button (4).

6.3. Call Functions (Bluetooth Mode Only)

- **Answer Call:** Press the Play/Pause Button (2) when an incoming call rings.
- **End Call:** Press the Play/Pause Button (2) during a call.
- **Reject Call:** Long press the Play/Pause Button (2) when an incoming call rings.
- **Voice Assistant Activation:** Short press the Power On/Off Button (6) to activate your device's voice assistant (e.g., Siri, Google Assistant).

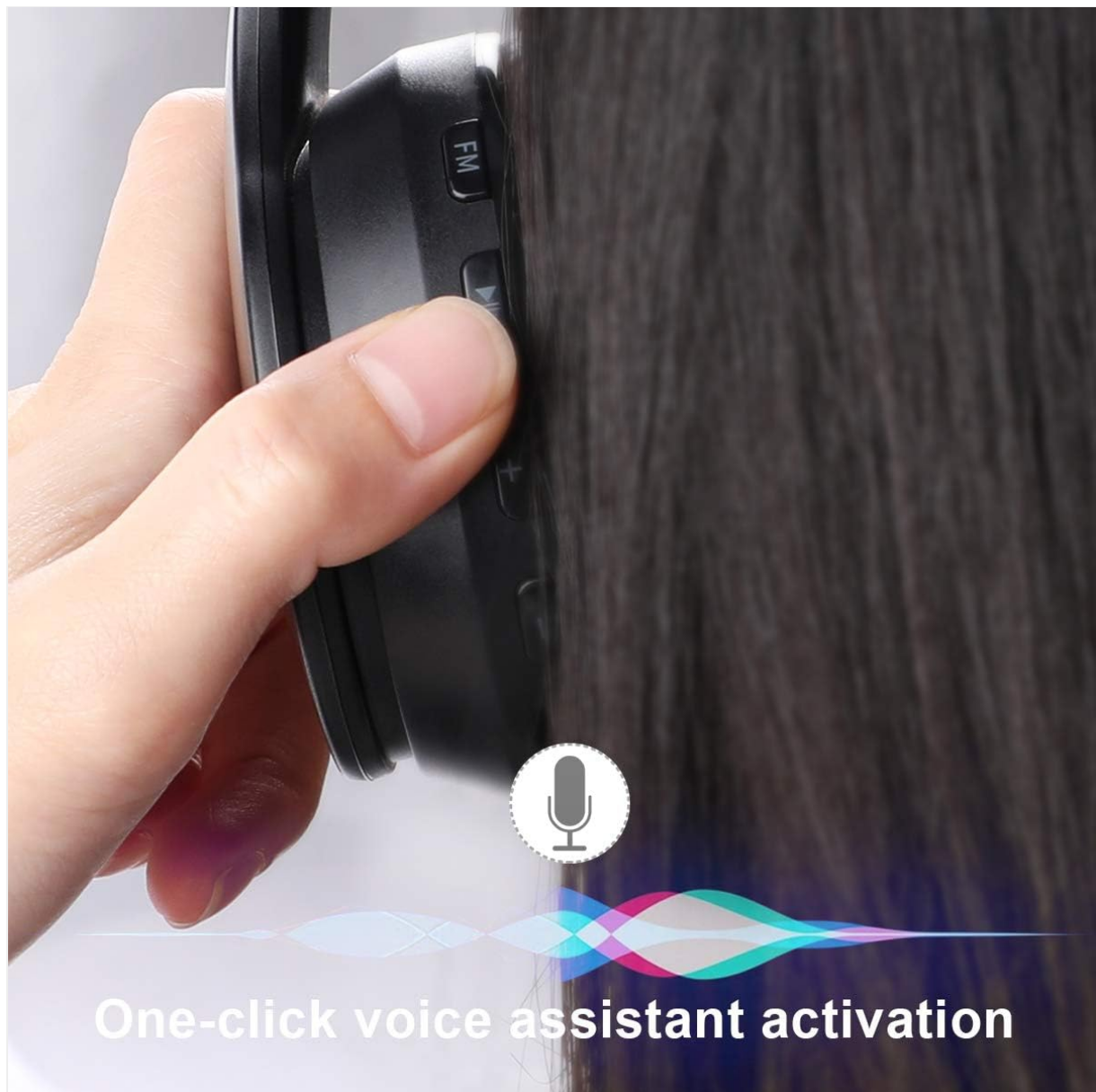


Image: A hand pressing a button on the LOBKIN S19 headset, illustrating the activation of a voice assistant.

6.4. FM Radio Mode

1. **Switch to FM Mode:** Press the FM & Bluetooth Button (1) to cycle through modes until you hear FM radio.
2. **Auto Scan:** In FM mode, long press the Play/Pause Button (2) to automatically scan and save available radio stations.
3. **Change Station:** Short press the Volume Up / Next Song Button (3) or Volume Down / Previous Song Button (4) to switch between saved stations.

6.5. TF Card Playback

The headset supports TF (MicroSD) cards from 2GB to 32GB for MP3 music playback.

1. **Insert TF Card:** With the headset powered off, carefully insert a TF card (gold contacts first, label side facing the earcup) into the TF Card Slot (5).
2. **Activate TF Mode:** Power on the headset. It should automatically switch to TF card playback mode if a card is inserted. If not, press the FM & Bluetooth Button (1) to cycle modes.
3. **Playback Control:** Use the Play/Pause (2), Volume Up/Next (3), and Volume Down/Previous (4) buttons as described in "6.2. Music Playback".

7. MAINTENANCE AND CARE

- Keep the headset dry. Do not expose it to moisture or extreme temperatures.
- Clean the headset with a soft, dry cloth. Do not use harsh chemicals or abrasive materials.
- Store the headset in a clean, dry place when not in use. The foldable design allows for compact storage.
- Avoid dropping or subjecting the headset to strong impacts.
- Do not attempt to disassemble or modify the headset, as this will void the warranty and may cause damage.



Image: The LOBKIN S19 headset highlighting its soft protein earmuffs, adjustable headband, snug fit, and foldable design for portability.

8. TROUBLESHOOTING

Problem	Possible Solution
Headset does not power on.	Ensure the headset is fully charged. Connect to a power source and try again.
Cannot pair via Bluetooth.	<ul style="list-style-type: none">• Ensure the headset is in pairing mode (Indicator Light flashing blue and red).• Make sure Bluetooth is enabled on your device.• Move the headset closer to your device.• Turn off and on both the headset and your device's Bluetooth.• Clear previous Bluetooth connections on your device if necessary.
No sound in Bluetooth mode.	<ul style="list-style-type: none">• Ensure the headset is properly paired and connected.• Check the volume levels on both the headset and your connected device.• Try playing audio from a different application or source.
Poor FM radio reception.	<ul style="list-style-type: none">• Move to an open area, away from obstructions or interference.• Perform an auto-scan again to find stronger signals.
TF card not playing.	<ul style="list-style-type: none">• Ensure the TF card is inserted correctly and contains supported MP3 audio files.• Check if the TF card is within the supported size range (2GB-32GB).• Try another TF card if available.

9. SPECIFICATIONS

Model	S19
Connectivity	Bluetooth 5.0, 3.5mm AUX, TF Card
Battery Capacity	500mAh Lithium Polymer
Music Playback Time	Up to 14 hours
Call Time	Up to 16 hours
Charging Time	Approximately 2.5 hours
Standby Time	Up to 300 hours
TF Card Support	2GB - 32GB (MP3 format)
Microphone	Built-in
Weight	250 grams
Dimensions (L x W x H)	18 x 7.5 x 17 cm
Material	Acrylonitrile Butadiene Styrene (ABS)
Special Features	Adjustable Headband, Foldable Design, Noise Isolation, Fast Charging

10. WARRANTY AND SUPPORT

LOBKIN products are designed and manufactured to the highest quality standards. For information regarding warranty coverage, please refer to the warranty card included with your purchase or visit the official LOBKIN website.

If you encounter any issues or have questions not covered in this manual, please contact LOBKIN customer support through the retailer where you purchased the product or via the contact information provided on the official LOBKIN website.