



[Manuals.plus](#) /

> [EveryDrop](#) /

> everydrop® by Whirlpool Ice and Water Refrigerator Filter 1 Instruction Manual

EveryDrop EDR1RXD1

everydrop® by Whirlpool Ice and Water Refrigerator Filter 1 Instruction Manual

Model: EDR1RXD1

INTRODUCTION

The everydrop® Ice and Water Refrigerator Filter 1, model EDR1RXD1, is designed to provide clean, fresh-tasting water and ice from your refrigerator. This filter is certified to reduce 28 contaminants, including lead, pesticides, and pharmaceuticals, ensuring high-quality water for your household. It is the only filter approved by Whirlpool, Maytag, Amana, KitchenAid, and Jenn Air brands, guaranteeing compatibility and optimal performance with your appliance. For optimal performance and water quality, it is recommended to replace your everydrop® Water Filter every 6 months or after dispensing 200 gallons of water, whichever comes first.



Image: everydrop® Ice and Water Refrigerator Filter 1 in its retail packaging.

INSTALLATION

Follow these general steps to install your new everydrop® refrigerator water filter. Specific instructions may vary slightly depending on your refrigerator model. Always refer to your refrigerator's user manual for precise instructions.

1. **Locate the Filter Compartment:** The filter is typically located in the upper right corner of the refrigerator compartment, or in the base grille.
2. **Prepare for Replacement:** If your refrigerator has a filter cover, open it. Some models may require pressing a button or tab to release the old filter.
3. **Remove the Old Filter:** Twist the old filter counter-clockwise until it releases from the housing. Pull it straight out. A small amount of water may drip out; this is normal.
4. **Install the New Filter:** Remove the protective cap from the new filter. Align the new filter with the filter housing and push it firmly into place.
5. **Secure the Filter:** Twist the filter clockwise until it locks securely into place. You may feel a slight click. If there is a filter cover, close it.
6. **Flush the System:** Dispense approximately 3-4 gallons of water through the refrigerator's water dispenser to flush out

any air and loose carbon particles. This is crucial for optimal filter performance and clear water.

7. **Reset the Filter Indicator:** Most refrigerators have a filter indicator light. Refer to your refrigerator's manual for specific instructions on how to reset it. This usually involves pressing and holding a "Filter" or "Reset" button for a few seconds.



Image: The everydrop® filter removed from its packaging, ready for installation.

OPERATION

Once installed and flushed, your everydrop® filter will continuously work to provide filtered water and ice. Simply use your refrigerator's water and ice dispenser as usual. The filter operates silently within your appliance, ensuring a steady supply of clean water.

MAINTENANCE AND FILTER REPLACEMENT

Regular filter replacement is essential for maintaining water quality and the longevity of your refrigerator's water system. The everydrop® filter should be replaced every 6 months or after 200 gallons of water usage, whichever occurs first. Your refrigerator's filter indicator light will typically signal when a replacement is due.

- **Monitor Usage:** While the indicator light is helpful, consider your household's water consumption. High usage may necessitate more frequent changes.
- **Water Quality:** If you notice a decrease in water flow, a change in taste, or cloudiness before the 6-month mark, it may indicate that the filter is saturated and needs to be replaced sooner.
- **Genuine Filters:** Always use genuine everydrop® filters. Using non-genuine filters can lead to reduced filtration effectiveness, potential damage to your refrigerator's water system, and may void your appliance's warranty.

- **Storage:** Store new, unused filters in a cool, dry place.

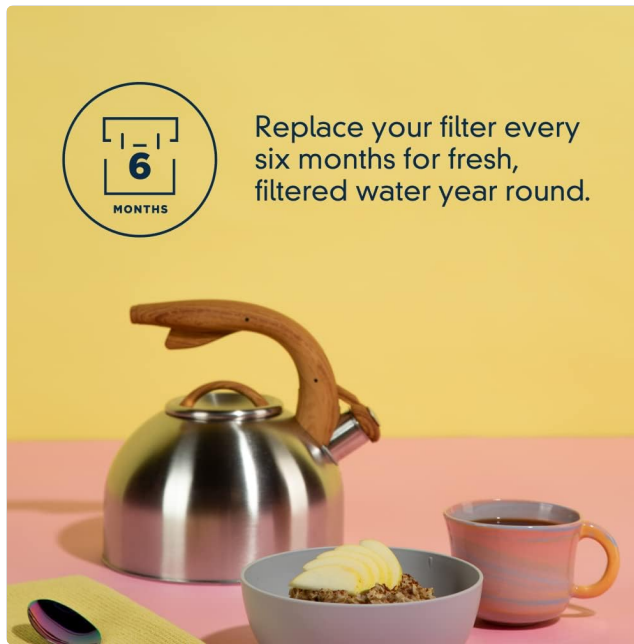


Image: Reminder to replace the filter every six months for continuous fresh, filtered water.

Designed for Your Appliance²

Whirlpool®

MAYTAG®

KitchenAid®

JENNAIR®

AMANA®

1. 16.9 oz size bottle. Based on the cost of one everydrop® filter and cost of 1500 water bottles at .25 cents a bottle.
 2. everydrop® products and the recommended brand's products are owned and distributed by Whirlpool Corporation.

Image: Emphasizing that everydrop® filters are specifically designed and approved for Whirlpool, Maytag, KitchenAid, JennAir, and Amana appliances.

TROUBLESHOOTING

Problem	Possible Cause / Solution
Low Water Flow from Dispenser	<ul style="list-style-type: none"> • Clogged Filter: The filter may be old or clogged. Replace the filter. • Air in System: After replacement, air can be trapped. Flush several gallons of water through the dispenser. • Water Supply Issue: Check household water pressure or ensure the refrigerator's water supply line is fully open.

Problem	Possible Cause / Solution
Water Tastes Bad or Cloudy	<ul style="list-style-type: none"> • New Filter Not Flushed: Flush 3-4 gallons of water through the dispenser to remove carbon fines. • Old Filter: The filter has reached its capacity. Replace the filter. • Non-Genuine Filter: Ensure you are using an authentic everydrop® filter.
Filter Indicator Light Remains On After Replacement	<ul style="list-style-type: none"> • Not Reset: The indicator light needs to be manually reset. Refer to your refrigerator's user manual for specific instructions on how to reset the filter light. This typically involves pressing and holding a "Filter" or "Reset" button for a few seconds.
Water Leakage Around Filter Area	<ul style="list-style-type: none"> • Improper Installation: Ensure the filter is fully inserted and twisted clockwise until it locks securely. • Damaged O-rings: Inspect the O-rings on the filter for any damage. If damaged, the filter may need to be replaced.

PRODUCT SPECIFICATIONS

Feature	Detail
Model Number	EDR1RXD1
Brand	EveryDrop by Whirlpool
Material	Plastic
Product Dimensions	2.5"D x 2.5"W x 8.69"H
Item Weight	7.2 ounces
External Testing Certification	NSF
Product Benefits	Reduces Sediment, Lead, Pesticides, Pharmaceuticals
Filter Life	6 months or 200 gallons
Compatible Refrigerator Models	Whirlpool, Maytag, Amana, KitchenAid, Jenn Air (specific models listed in refrigerator manual)

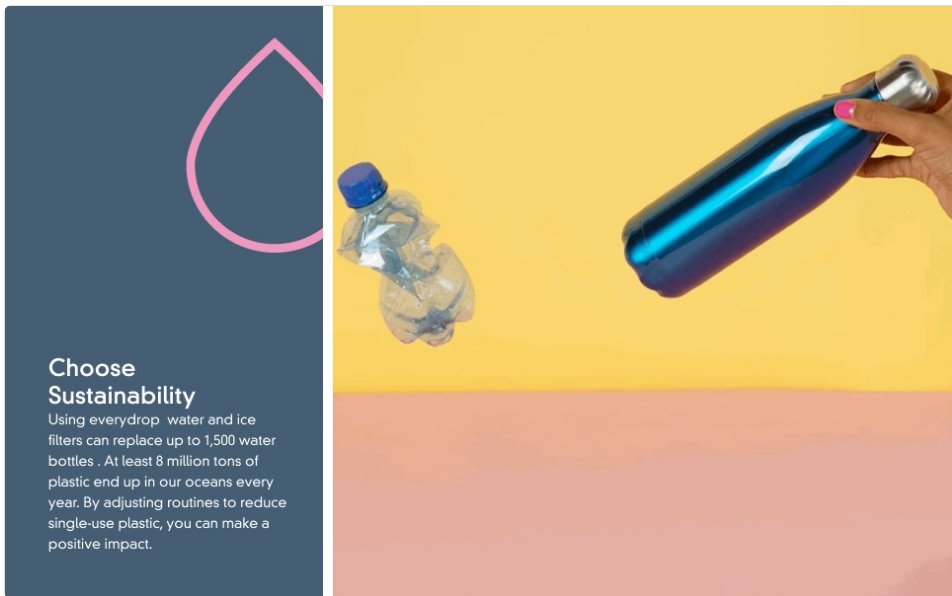


Image: Illustration of everydrop® Triple Filtration Technology.

WARRANTY AND SUPPORT

everydrop® filters are manufactured by Whirlpool Corporation. Damage caused by a non-genuine everydrop® Water Filter is not covered under Whirlpool Corporation's warranty for your appliance. For warranty information specific to your everydrop® filter or for technical support, please refer to the documentation included with your filter or visit the official EveryDrop by Whirlpool website.

For further assistance, you may contact Whirlpool customer service. Contact details can typically be found on the Whirlpool website or in your refrigerator's user manual.