

## iReliev ET-7070

# iReliev TENS + EMS Combination Unit Muscle Stimulator

**MODEL: ET-7070**

## Introduction

---

This manual provides instructions for the safe and effective use of your iReliev TENS + EMS Combination Unit Muscle Stimulator, Model ET-7070. This device is designed to offer both Transcutaneous Electrical Nerve Stimulation (TENS) for pain relief and Electrical Muscle Stimulation (EMS) for muscle performance and recovery. It features 8 pre-programmed TENS modes and 6 EMS modes, allowing for customized therapy. The unit includes 25 adjustable intensity levels and a 60-minute adjustable therapy timer.



**Image:** The iReliev TENS + EMS Combination Unit, shown alongside its retail packaging, highlighting the device's compact design and the product branding.

## Important Safety Information

**WARNING:** Do not use this System if you have a cardiac pacemaker, implanted defibrillators or any other implanted metallic or electronic device. Do not use this System if you have undiagnosed chronic pain. Not indicated for Children under the age of 18.

**Legal Disclaimer:** Do not use this system if you have a cardiac pacemaker, implanted defibrillator or any other implanted metallic or electronic device. This product is not suitable for people with heart rhythm problems. Do not use this product if you have undiagnosed chronic pain otherwise. Do not use if pregnant or in labor. Do not use if you have cancer. Not suitable for children under 16 years of age. Keep out of reach of children. Please see the full user manual for additional warnings and cautions. Individual symptoms, situations, circumstances, and results may vary. Please consult your physician or qualified health care provider regarding your condition and appropriate medical treatment. The information provided is not intended to be used for medical diagnosis or treatment or as a substitute for professional medical advice.

## Setup

Follow these steps to prepare your iReliev TENS + EMS unit for first use:

1. **Unpack the System:** Carefully remove all components from the packaging. Ensure you have the iReliev device, electrode pads (small and XL), lead wires, 3 AAA batteries, a removable belt clip, and a carry pouch.



**Image:** All components included in the iReliev TENS + EMS kit, including the device, various electrode pads, lead wires, batteries, and a storage pouch.

2. **Insert Batteries:** Open the battery compartment on the back of the device and insert the 3 included AAA batteries, ensuring correct polarity. Close the compartment securely.
3. **Attach Pads to Lead Wires:** Connect the electrode pads to the lead wires by snapping them onto the connectors.
4. **Connect Lead Wires to Device:** Plug the lead wires into the output ports (CH1 and CH2) at the top of the iReliev device.
5. **Apply Pads to Body:** Clean and dry the skin area where you intend to place the pads. Remove the protective film from the electrode pads and firmly press them onto the skin. Ensure pads are placed on healthy, intact skin.

## Operating Instructions

Once the device is set up, follow these steps for operation:

1. **Power On:** Press the 'ON +' button to turn on the device. The backlit display will illuminate.
2. **Select Mode:** Press the 'MODE' button to cycle through the available TENS and EMS programs (P1-P8 for TENS, P1-P6 for EMS). Program P8 is specifically designed for Arthritis symptoms.



**6 Pre-Set EMS Modes**  
For Muscle Conditioning (P1-P6)

**7 Pre-Set TENS Modes**  
For Pain Relief (P1-P7)

**TENS Arthritis Mode**  
Pre-Set TENS Mode (P8)

**Lock Function**  
Locks to Prevent Injury

**60 Minutes**  
of Treatment Time

**25 Levels**  
of Adjustable Intensity

**Image:** A close-up of the iReliev device's display, showing program P8 (TENS) and intensity levels, along with buttons for power, mode selection, and channel control.

3. **Adjust Intensity:** Use the 'ON +' button for Channel 1 (CH1) and 'CH2' button for Channel 2 (CH2) to increase the intensity. Use the 'OFF -' button to decrease intensity. Start with a low intensity and gradually increase until you feel a comfortable, yet strong, sensation. The device offers 25 levels of adjustable intensity.
4. **Set Timer:** The device has a default 60-minute therapy timer. Refer to the full user manual for instructions on adjusting the timer if needed.
5. **Lock Function:** The device features a lock function to prevent accidental changes to settings during use. Consult the full user manual for details on how to activate and deactivate this feature.
6. **Pad Placement:** Proper pad placement is crucial for effective therapy. Refer to the diagrams below for recommended placements for both small and XL pads.

# Small pad placements.



Ankle



Calves



Elbow



Feet



Shoulder



Knee



Lower Back



Quads



Wrist



Upper Back



Upper Arm

**Image:** A visual guide illustrating recommended placements for small electrode pads on various body parts, including ankle, calves, elbow, feet, shoulder, knee, lower back, quads, wrist, upper back, and upper arm.

# XL pad placements.



Upper Back



Abs



Calves



Lower Back



Upper Arm



Shoulder



Knee

**Image:** A visual guide illustrating recommended placements for XL electrode pads on various body parts, including upper back, abs, calves, lower back, upper arm, shoulder, and knee.

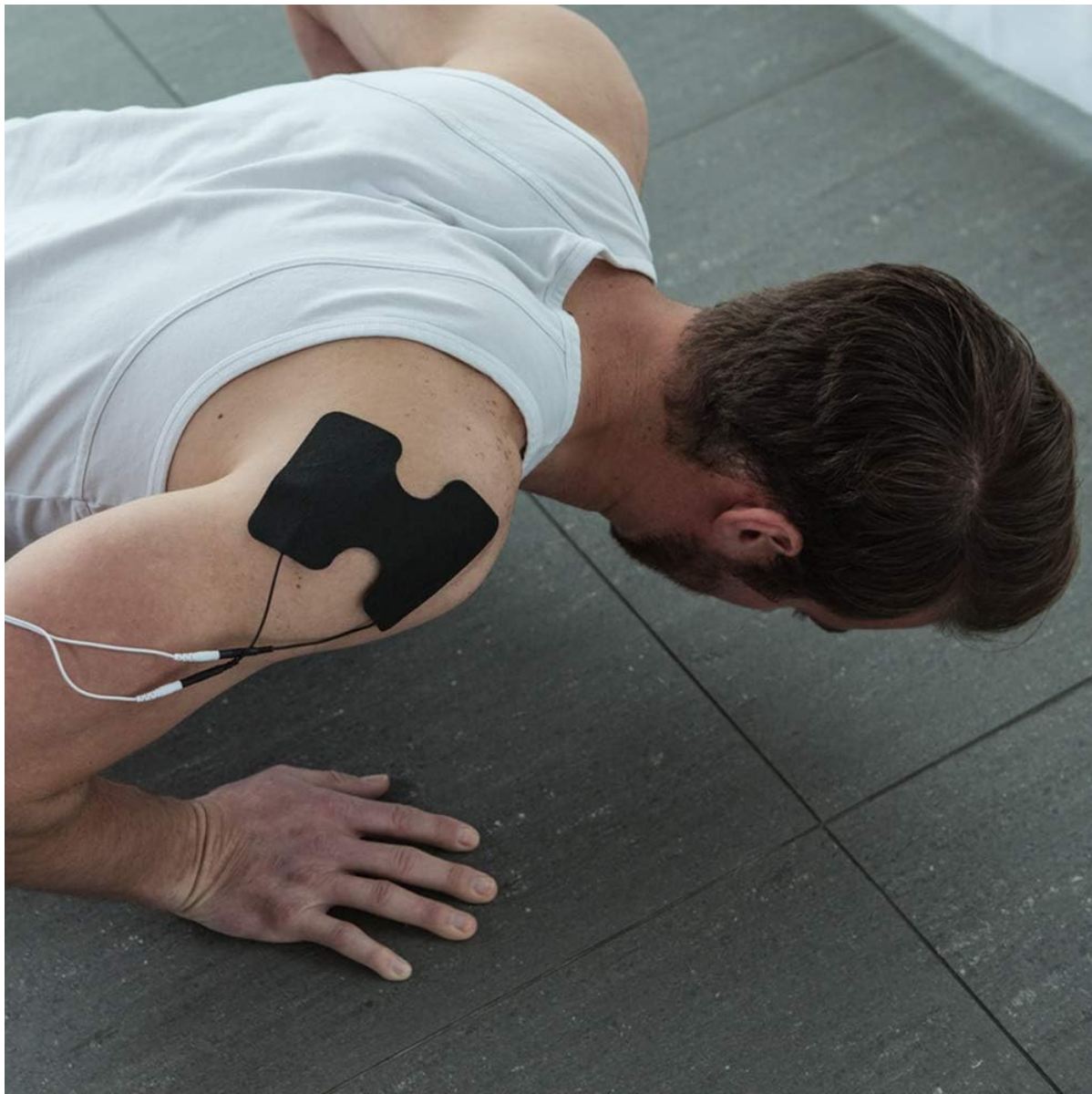




**Image:** A person sitting, holding the iReliev device, with an electrode pad applied to their upper arm, demonstrating typical use.



**Image:** A person walking outdoors with a child and a dog, wearing the iReliev device clipped to their clothing, with an electrode pad on their upper arm, illustrating the device's portability.



**Image:** A person performing push-ups, with an iReliev electrode pad placed on their shoulder, demonstrating the use of the device during physical activity or for muscle recovery.

- **Power Off:** After your session, press and hold the 'OFF -' button to turn off the device. Remove the pads from your skin and reapply the protective film.

## Maintenance

---

Proper maintenance ensures the longevity and effectiveness of your iReliev device:

- **Cleaning the Device:** Wipe the device with a soft, damp cloth. Do not use abrasive cleaners or immerse the device in water.
- **Cleaning Electrode Pads:** Gently wipe the adhesive side of the pads with a damp cloth or a small amount of water to remove any debris. Allow them to air dry completely before reapplying the protective film. Do not use soap or alcohol.
- **Storage:** Store the device and pads in the provided carry pouch in a cool, dry place, away from direct sunlight and extreme temperatures.
- **Battery Replacement:** Replace batteries when the low battery indicator appears on the display. Always use new AAA batteries.



## Troubleshooting

If you encounter issues with your iReliev device, refer to the following common solutions:

- **Device Not Turning On:**
  - Check if the batteries are inserted correctly and are not depleted. Replace with new AAA batteries if necessary.
  - Ensure the battery compartment is securely closed.
- **No Sensation or Weak Sensation:**
  - Increase the intensity level using the 'ON +' or 'CH2' buttons.
  - Ensure the electrode pads are firmly attached to clean, dry skin.
  - Check that the lead wires are securely connected to both the pads and the device.
  - The electrode pads may be worn out. Replace them with new pads if they no longer adhere well or provide consistent sensation.
- **Pads Not Sticking:**
  - Clean the skin area thoroughly before application.
  - Gently clean the adhesive side of the pads with a damp cloth and let them air dry.
  - If pads are old or have lost their adhesiveness, replace them.
- **Irregular or Uncomfortable Sensation:**
  - Ensure both pads for a channel are making full contact with the skin.
  - Try a different program mode.
  - Reduce the intensity level.

## Specifications




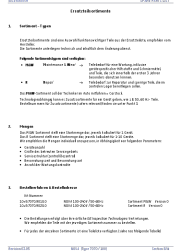


Feature	Detail
Model Number	ET-7070
Product Dimensions	2.14 x 5.5 x 7.08 inches
Item Weight	11.2 ounces
Power Source	Battery Powered (3 AAA batteries, included)
Material	Acrylonitrile Butadiene Styrene
Therapy Modes	8 Pre-Programmed TENS Modes, 6 EMS Modes (14 total)
Intensity Levels	25 Adjustable Levels
Timer	Up to 60 Minutes Adjustable Therapy Timer
Use For	Whole Body (Back, Abs, Knee, Shoulder, Ankles, Hips, Wrist, Elbow)

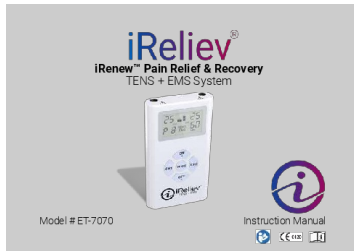
## Warranty and Support

For detailed warranty information, please refer to the documentation included with your product or visit the

official iReliev website. If you require technical assistance, have questions about your device, or need to inquire about replacement parts, please contact iReliev customer support directly. Contact information can typically be found on the product packaging or the official brand website.

## Related Documents - ET-7070

 <p>iReliev™ Conductive Back Wrap</p> <p>Instruction Manual Read before using</p>	<p><a href="#">iReliev Conductive Back Wrap Instruction Manual</a></p> <p>Instruction manual for the iReliev Conductive Back Wrap, detailing its features, safety information, usage instructions, troubleshooting, care, and warranty.</p>
 <p>Troubleshooting Guide</p>	<p><a href="#">iReliev Troubleshooting Guide: Device Not Turning On, Intensity, and Pulse Issues</a></p> <p>Comprehensive troubleshooting guide for iReliev devices. Resolve common issues such as the device not powering on, intermittent operation, intensity control problems, and lack of electric pulses. Includes solutions for battery, electrode, and lead wire problems.</p>
 <p>iReliev™ Premium Heating Pad</p> <p>Model # HC-2412</p>	<p><a href="#">iReliev Premium Heating Pad HC-2412 Instruction Manual</a></p> <p>Official instruction manual for the iReliev Premium Heating Pad, Model HC-2412. Includes indications for use, contraindications, warnings, setup procedures, care instructions, technical specifications, and warranty information.</p>
 <p>GE Inspection Technologies</p>	<p><a href="#">GE Inspection Technologies NOVA (Type 7070/100) Spare Parts List and Kits</a></p> <p>Comprehensive spare parts list and maintenance kits for the GE Inspection Technologies NOVA (Type 7070/100) equipment. Details part numbers, descriptions, and ordering information for M&amp;W (Maintenance &amp; Wear) and R (Repair) kits.</p>
 <p>iReliev™ Leg &amp; Foot Air Compression System</p> <p>Model # CO-2000</p>	<p><a href="#">iReliev CO-2000 Leg &amp; Foot Air Compression System User Manual</a></p> <p>Comprehensive user manual for the iReliev CO-2000 Leg &amp; Foot Air Compression System. Learn about its features, indications, safety warnings, operating instructions, troubleshooting, and care.</p>
 <p>iReliev™</p>	<p><a href="#">iReliev Hand &amp; Wrist Massager Instruction Manual</a></p> <p>Official instruction manual for the iReliev Hand &amp; Wrist Massager (Model MA-7000-WH), detailing features, specifications, operation, cleaning, and warranty information.</p>



[\[pdf\]](#) User Manual Instructions

Model ET 7070 INDICATIONS Read this instruction manual before operation Be sure to comply with all CAUTIONS and WARNINGS in Failure follow implement according the use operating 11 1 18 Manual File Size Reduced ireliev 2018

iRenew™ Pain Relief Recovery TENS EMS System Model # **ET-7070** Instruction Manual INDICATIONS Read this instruction manual before operation. Be sure to comply with all CAUTIONS and WARNINGS in this manual. Failure to follow and implement according to the use and operating instructions can...

lang:en score:51 filesize: 656.04 K page\_count: 36 document date: 2018-11-01



[\[pdf\]](#) User Manual Instructions

Pain Relief Recovery System TENS EMS Muscle Read this instruction manual before operation Be sure to comply with all CAUTIONS and WARNINGS in Failure follow implement according iR ET 7070 Manual IM 24 086 RevA23 ireliev 2023 08 |||

Pain Relief Recovery System TENS EMS Muscle Stimulator Model # **ET-7070** Instruction Manual INDICATIONS Read this instruction manual before operation. Be sure to comply with all CAUTIONS and WARNINGS in this manual. Failure to follow and implement according to the use and operating instruc...

lang:en score:51 filesize: 2.08 M page\_count: 44 document date: 2023-06-13



[\[pdf\]](#) User Manual Instructions Troubleshooting Guide Warranty Accessories Diagram

Provided by ManualsAndMore Download User Manual iReliev ET 1616 Instructions And Operating ET1616 manualsandmore |||

Instruction Operating Manual Read Before Using MODEL # ET-1616 IMPORTANT INFORMATION iReliev Con ... sted. iReliev Conductive Back Wrap Accessory to iReliev TENS Model # ET-1313 and TENS EMS Model # **ET-7070**. Also serves as replacement for ET-9090 Back Pain Relief System. Table of Contents Introduc...

lang:en score:50 filesize: 1.31 M page\_count: 14 document date: 2019-07-24



[\[pdf\]](#) User Manual Diagram

Instruction Operating Manual Read Before Using iReliev When the Wrap is fastened and electrode pads are in contact with skin intensity of iReliev® TENS device may be adjusted Back Pain 7 20 17 Relief System hero font 4 75 x 6 ireliev 2018 01

Instruction Operating Manual Read Before Using MODEL # ET-9090 IMPORTANT INFORMATION The iReliev ... ned on. Selecting the Treatment Program Mode The iReliev stimulator device Model # ET-9090/ET-1313/**ET-7070** offers eight preset treatment program modes. The programs differ with respect to varying pu...

lang:en score:46 filesize: 2.19 M page\_count: 20 document date: 2017-07-20



[\[pdf\]](#) User Manual Troubleshooting Guide Warranty Accessories Diagram

Instruction Operating Manual Read Before Using 7 19 17 iReliev Back Wrap with hero font updated 3 937  
in x 5 9055 no portable storage bag reseller ireliev 2018 01 IMPORTANT INFORMATION iReliev®  
Conductive is particularly safe and user friendly When the fastened electrode pads are contact skin  
intensity of TENS device may be adjusted |||

Instruction Operating Manual Read Before Using MODEL # ET-1616 IMPORTANT  
INFORMATION iReliev Con ... sted. iReliev Conductive Back Wrap Accessory to  
iReliev TENS Model # ET-1313 and TENS EMS Model # **ET-7070**. Also serves as  
replacement for ET-9090 Back Pain Relief System. Table of Contents Introduc...  
lang:en score:40 filesize: 1.3 M page\_count: 14 document date: 2017-07-19



[\[pdf\]](#) User Manual Warranty Accessories Diagram

Conductive Back Wrap Instruction Manual Read Before Using Page 2 IMPORTANT INFORMATION

iReliev™ is particularly safe and user friendly A1LKIMH6NwS images na ssl amazon I

Conductive Back Wrap Instruction Manual Read Before Using IMPORTANT  
INFORMATION iReliev™ Conducti ... S device may be adjusted.

iReliev™Conductive Back Wrap Accessory to iReliev™ TENS Device Model # **ET-7070**,ET-9090 Table of Contents Introduction 3 Safety Information 4-5 Package  
Contents 6 ...

lang:en score:39 filesize: 1.64 M page\_count: 13 document date: 2018-09-18

Selecting the Program on Model ET-7070									
Program	Frequency	Pulse Width	Intensity	Mode	Handset	Handset	Handset	Handset	Handset
(TENS) Output Modes									
P1 Mode	15Hz	100µs	Constant	Choice Pain	Handset	Handset	Handset	Handset	Handset
P2 Mode	60Hz	100µs	Constant	Choice Pain	Handset	Handset	Handset	Handset	Handset
P3 Mode	15Hz	100µs	Constant	Choice Pain	Handset	Handset	Handset	Handset	Handset
P4 Mode	15Hz	100µs	Constant	Choice Pain	Handset	Handset	Handset	Handset	Handset
P5 Mode	15Hz	100µs	Constant	Choice Pain	Handset	Handset	Handset	Handset	Handset
P6 Mode	15Hz	100µs	Constant	Choice Pain	Handset	Handset	Handset	Handset	Handset
P7 Mode	15Hz	100µs	Constant	Choice Pain	Handset	Handset	Handset	Handset	Handset
P8 Mode	15Hz	100µs	Constant	Choice Pain	Handset	Handset	Handset	Handset	Handset
(EMS) Electrical Muscle Stimulation Output Modes									
P1 Mode	15Hz	100µs	Constant	Choice Pain	Handset	Handset	Handset	Handset	Handset
P2 Mode	60Hz	100µs	Constant	Choice Pain	Handset	Handset	Handset	Handset	Handset
P3 Mode	15Hz	100µs	Constant	Choice Pain	Handset	Handset	Handset	Handset	Handset
P4 Mode	15Hz	100µs	Constant	Choice Pain	Handset	Handset	Handset	Handset	Handset
P5 Mode	15Hz	100µs	Constant	Choice Pain	Handset	Handset	Handset	Handset	Handset
P6 Mode	15Hz	100µs	Constant	Choice Pain	Handset	Handset	Handset	Handset	Handset
P7 Mode	15Hz	100µs	Constant	Choice Pain	Handset	Handset	Handset	Handset	Handset
P8 Mode	15Hz	100µs	Constant	Choice Pain	Handset	Handset	Handset	Handset	Handset

[\[pdf\]](#) Reference Guide Guide

MW EMS Suggestion Selecting the Program on Model ET 7070 Handset Quick Reference Guide

Electrical Muscle Stimulation Output 6 89 7 P1 Mode TENS 15Hz P2 60Hz P3 P4 2 P5 P6 P7 iReliev thru  
P8 Thru ireliev 2017 01

Selecting the Program on Model **ET-7070** The iReliev Dual Channel TENS EMS  
Strength Recovery System offers 14 different preset treatment programs. Program  
Therapy Pulse Mode Type Rate Output Mode/ Type of Pain/ Pulse Width Program  
Potential Benefits You Should Feel Handset Quick Referenc...

lang:en score:38 filesize: 219.01 K page\_count: 1 document date: 2017-01-19





[\[pdf\]](#) User Manual Quick Start Guide Installation Guide Instructions Guide

Strength Recovery System Dual Channel TENS EMS Keep this manual available whenever you use the system The is intended for personal on healthy adults only effectiveness of depends greatly a per son s individual physical condition It may not always be effective every user safety stimulation during pregnancy iReliev ET 7070 User Manual media webcollage net rwwfp wc cp 21448726 module ireliev products 1467839082571 tab fb5ffcac 45af 4eaf b65b e6b506c635e9 24bad924 dc58 403a b47f 5bf10aca1496 action resource caption iReliev® d

Strength Recovery System Dual Channel TENS EMS Model # **ET-7070** Instruction and Operating Manual Read Before Using [www.iReliev.com](http://www.iReliev.com) Table of Contents INDICATIONS FOR USE..... SYSTEM INCLUDES..... SAFETY I...

lang:en score:38 filesize: 5.38 M page\_count: 35 document date: 2016-07-13

[\[pdf\]](#) User Manual Instructions

Instruction Operating Manual Webcollage Read Before Using and before using this System for the first time Keep manual available whenever you use The is intended personal on healthy adult muscle only safety of during pregnancy or birth has not been established Intended Use iReliev™ Strength Recovery model no ET 7070 ○ For temporary relief pain associated with sore aching User skin areas that lack normal sensation Following surgical procedures if contractions might impede healing process Over a menstruating pregnant uterus There tendency to hemorrhage following acute trauma fracture Place electrodes in accordance illustrations Precautions I Recovery instruction operation Be sure comply all CAUTIONS 98f942fb 2560 4a8c afdd 2373018810bb VoYWb8pJwIGQAmM0 media webcollage net rwwfp wc cp 20582560 module ireliev products 1454605144926 tab 53cfcb54 eafc 468f 81e4 0c32223443b2 media3 2f2b16b238aae1ee322bc36e65bde39c921c36a3 response content type application Expires 1893496165 AWSAccessKeyId AKIAIIE5CHZ4PRWSLYKQ Signature 421FEv6Rub

Instruction Operating Manual Read Before Using iReliev™ Strength Recovery System iReliev™ Pain Management System Intended Use The iReliev™ Strength Recovery System, model no. **ET-7070** is intended for: For temporary relief of pain associated with sore and aching muscles in the lower ba...

lang:en score:36 filesize: 1.68 M page\_count: 25 document date: 2015-02-07

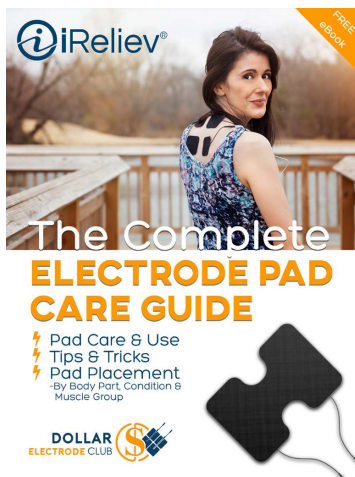


[\[pdf\]](#) User Manual Quick Start Guide Installation Guide Instructions Guide Accessories

Strength Recovery System Dual Channel TENS EMS Model ET 7070 Instruction and Operating Manual Read Before Using iReliev INDICATIONS FOR USE Your iReliev® model is intended for Temporary relief of pain associated with sore aching muscles in the upper Visit or your authorized reseller to purchase accessories replacement instruction manual before operation Be sure comply all CAUTIONS Manual2 ireliev 2016 11 12

Strength Recovery System Dual Channel TENS EMS Model # **ET-7070** Instruction and Operating Manual Read Before Using [www.iReliev.com](http://www.iReliev.com) Table of Contents INDICATIONS FOR USE..... SYSTEM INCLUDES..... SAFETY I...

lang:en score:32 filesize: 2.17 M page\_count: 35 document date: 2016-06-01

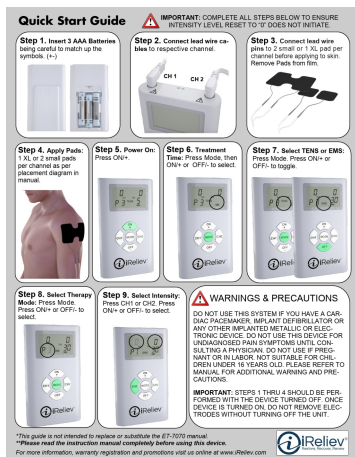


[\[pdf\]](#) Guide

Table of Contents Untitled The Complete Electrode Pad Guide Background Pads discussed in this eBook relate to electrically conductive gel pads which are used carry an electrical signal from the human skin 3 17 Placement ireliev 2017 03

Table of Contents Pad Guide Background.....3 Pad Care..... ... ds should never touch and should be at least 1 inch apart. 3. When using iReliev s model ET-1313 or **ET-7070**, electrode pads always use two small pads per channel or one large pad per channel. 4. The d...

lang:en score:32 filesize: 3.28 M page\_count: 31 document date: 2017-03-03



[\[pdf\]](#) User Manual Quick Start Guide Guide Diagram

MW Warnings Precautions Press CH1 or CH2 ON OFF to select WARNINGS PRECAUTIONS DO NOT USE THIS SYSTEM IF YOU HAVE A CAR DIAC PACEMAKER IMPLANT DEFIBRILLATOR OR ANY OTHER iReliev ET 7070 Quick Start Guide ireliev 2016 11

Step 1. Insert 3 AAA Batteries being careful to match up the symbols. - IMPORTANT: COMPLETE ALL ... ELECTRODES WITHOUT TURNING OFF THE UNIT. \*This guide is not intended to replace or substitute the **ET-7070** manual. \*\*Please read the instruction manual completely before using this device. For more i...

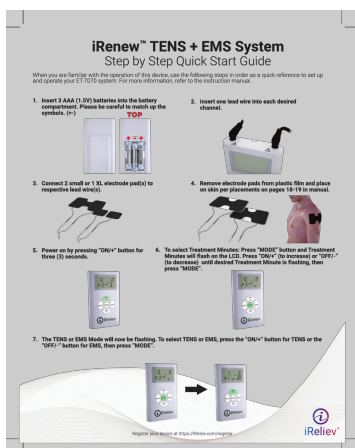
lang:en score:31 filesize: 717.33 K page\_count: 1 document date: 2016-05-23

[\[pdf\]](#) User Manual

Function Mode Constant Burst Modulation Program Benefits You should feel P1 for temporary relief of pain Continuous comfortable tingling The underlying de associated with sore and or crease gradually after treatment 11 17 iReliev Blue 6 75 x 4 ET 7070 Manual ireliev 2018 01

Program/Mode Benefits You should feel P1 -for temporary relief of pain Continuous comfortable tingling. The underlying pain should de- associated with sore and/or crease gradually after treatment. P2 aching muscles in the lower Comfortable pulsing sensation. The underlying ...

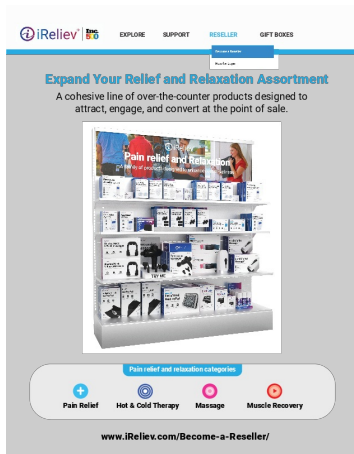
lang:en score:31 filesize: 6.89 M page\_count: 38 document date: 2017-11-17



[\[pdf\]](#) Quick Start Guide Guide

8 7 18 ET 7070 Quick Start Guide iRenew TENS EMS System Step by When you are familiar with the operation of this device use following steps in order as a quick reference to set up and operate your system For more information refer instruction 11 1 File Size Reduced ireliev 2018 IM-SA-084 RevC18 ...

lang:en score:29 filesize: 774.07 K page\_count: 2 document date: 2018-11-01



## [pdf] Catalog

iReliev Dealer Catalog updated Become a Reseller ireliev 2015 05 |||

SHOP EXPLORE SUPPORT RESELLER GIFT BOXES Expand Your Relief and Relaxation Assortment A cohesiv ... ar warranty plus additional year with registration  
Wired TENS EMS System Retail: 89.95 Model # **ET-7070** FEATURES Backlit display  
25 Medical-grade intensity 80mA levels 2 Channel system. Run ...

lang:en score:28 filesize: 18.36 M page\_count: 28 document date: 2021-09-24

Image	Item #	Description	Case Pack	MAP	MSRP	Reseller 1 (RS1-P) Wholesale Price
	ET-1313	iReliev® Pain Relief System, Dual Channel TENS Includes (2) Lead Wire, 4 Pads of 2" x 2", 2 Pads of 3.5" x 5" Electrode Pads, Belt Clip Holder, Tote 3 AAA Batteries	40/Case	\$ 49.95	\$ 69.99	\$ 25.00
	ET-7070	iReliev® Strength & Recovery System, Dual Channel TENS & EMS Combination Includes (2) Lead Wire, 4 Pads of 2" x 2", 2 Pads of 3.5" x 5" Electrode Pads, Belt Clip Holder, Tote 3 AAA Batteries	40/Case	\$ 79.95	\$ 129.99	\$ 40.00
	ET-4090	iReliev® Back Pain Relief System, Dual Channel TENS Conductive Back Wrap with Carrying Case	120/Case	\$ 79.95	\$ 129.99	\$ 40.00
	ET-0080	iReliev® Pain Relief Pads, 4x4 Wireless TENS, (2) 2" x 2" Strip Style Electrodes Included	40/Case	\$ 29.95	\$ 39.99	\$ 10.00
	CM-8090-A	iReliev® Pads & Leads Kit, Includes (2) 4x4 Pads of Electrodes and (2) Lead Wire	40/Case	\$ 29.95	\$ 39.99	\$ 10.00
	ET-1315	iReliev® Conductive Back Wrap, Accessory (Device not included)	20/Case	\$ 49.95	\$ 59.99	\$ 20.00
	ET-1044	iReliev® Pads for Back Kit, Includes (2) Strip Style 2" x 2" Electrode Pads	40/Case	\$ 14.95	\$ 20.00	\$ 7.00
	ET-7171	iReliev® Super Pads Kit, Includes (2) Pads of 3.5" x 5" Electrode Pads	40/Case	\$ 29.95	\$ 34.95	\$ 10.00

## [pdf] Accessories

Sales order Simple Lines design Mike Williams 2017 Reseller Pricing Item ET 1313 Description Case Pack MAP MSRP 1 RS1 P Wholesale iReliev® Pain Relief System Dual Channel TENS Includes View iReliev ireliev 01 |||

Image 2017 Reseller Pricing Item # ET-1313 Description Case Pack MAP MSRP Reseller 1 RS1-P ... x 5 Electrode Pads, Belt Clip Holder, Tote 3 AAA Batteries  
40/Case 49.95 69.99 25.00 **ET-7070** iReliev Strength Recovery System, Dual Channel TENS EMS Combination: Includes 2 Lead ...

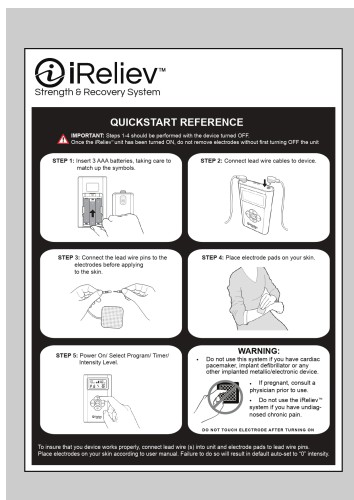
lang:en score:28 filesize: 334.36 K page\_count: 2 document date: 2017-01-25



## [pdf] User Manual Instructions

9 6 18 IM 24 086 RevA18 2 indd iRenew™ Pain Relief Recovery TENS EMS System Failure to follow and implement according the use operating instructions can cause harm user or device The is intended for over counter however if you have medical questions we strongly encourage con sult with your physician regarding indications of this original content syndigo asset 138db622 0931 4732 af52 45adb53ac50f iRenew™ Pain Relief Recovery TENS EMS System Model # **ET-7070** Instruction Manual INDICATIONS Read this instruction manual before operation. Be sure to comply with all CAUTIONS and WARNINGS in this manual. Failure to follow and implement according to the use and operating instructions can...

lang:en score:26 filesize: 2.81 M page\_count: 36 document date: 2018-09-28



## [pdf] User Manual Guide

Updated iReliev ET 7070 Quick Guide IMPORTANT Steps 1 4 should be performed with the device turned OFF Once iReliev™ unit has been ON do not remove electrodes without first turning View ireliev 2015 09 |||

Strength Recovery System QUICKSTART REFERENCE IMPORTANT: Steps 1-4 should be performed with the device turned OFF. Once the iReliev™ unit has been turned ON, do not remove electrodes without first turning OFF the unit STEP 1: Insert 3 AAA batteries, taking care to match up the symbols. STEP 2:...

lang:en score:26 filesize: 760.71 K page\_count: 1 document date: 2015-02-10



[pdf]

I LOVE COM INNOVATIONS IN OTC ELECTROTHERAPY Sam s Club Stands for Transcutaneous Electrical Nerve Stimulation a safe non invasive drug free method of pain relief used by Physical iReliev samsclub sams images

INNOVATIONS IN OTC ELECTROTHERAPY: The Future of Portable Drug Free Pain Relief Muscle Conditionin ... tensity for Left CH1 or right CH2 channels independently. Great For small or large body parts. **ET-7070** TENS Pain Relief Modes P1-P7 P1-P7 therapy programs vary in pulse width frequency. Comfo...

lang:en score:24 filesize: 4.25 M page\_count: 16 document date: 2016-04-02



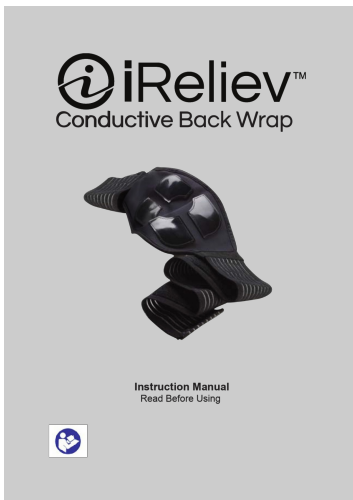
[pdf] User Manual Warranty

Sequeira Calderon Efrain IRELIEV ET 7070 03 MANUAL drive google u 0 uc id 1Zh

KZHycbouLDqKpncadgLdEybT1tSCE export |||

Website: <https://ireliev.com> Manufacturers warranties may not apply in all cases, depending on factors such as use of the product, where the product was purchased, or who you purchased the product from. Please review the warranty carefully, and contact the manufacturer if you have any questions. ...

lang:en score:24 filesize: 199.5 K page\_count: 1 document date: 2018-08-27



[pdf] User Manual Warranty Accessories Diagram

Conductive Back Wrap iReliev Model ET 1515 1 15 2015 ireliev 09

Conductive Back Wrap Instruction Manual Read Before Using IMPORTANT INFORMATION iRelievTM Conducti ... S device may be adjusted.

iRelievTMConductive Back Wrap Accessory to iRelievTM TENS Device Model # **ET-7070**,ET-9090 Table of Contents Introduction 3 Safety Information 4-5 Package Contents 6 ...

lang:en score:23 filesize: 1.64 M page\_count: 13 document date: 2015-09-30

#### Selecting the Program on Model # ET-7070

Program Number	Program Name	Program Type	Program Description	Program Benefits
<b>TENS Output Modes</b>				
01	Relax	Chronic Pain	Relaxation and pain relief	Chronic pain management
02	Relax	Chronic Pain	Relaxation and pain relief	Chronic pain management
03	Relax	Chronic Pain	Relaxation and pain relief	Chronic pain management
04	Relax	Chronic Pain	Relaxation and pain relief	Chronic pain management
05	Relax	Chronic Pain	Relaxation and pain relief	Chronic pain management
06	Relax	Chronic Pain	Relaxation and pain relief	Chronic pain management
07	Relax	Chronic Pain	Relaxation and pain relief	Chronic pain management
08	Relax	Chronic Pain	Relaxation and pain relief	Chronic pain management
09	Relax	Chronic Pain	Relaxation and pain relief	Chronic pain management
10	Relax	Chronic Pain	Relaxation and pain relief	Chronic pain management
<b>EMS Output Modes</b>				
11	Relax	Chronic Pain	Relaxation and pain relief	Chronic pain management
12	Relax	Chronic Pain	Relaxation and pain relief	Chronic pain management
13	Relax	Chronic Pain	Relaxation and pain relief	Chronic pain management
14	Relax	Chronic Pain	Relaxation and pain relief	Chronic pain management
15	Relax	Chronic Pain	Relaxation and pain relief	Chronic pain management
16	Relax	Chronic Pain	Relaxation and pain relief	Chronic pain management
17	Relax	Chronic Pain	Relaxation and pain relief	Chronic pain management
18	Relax	Chronic Pain	Relaxation and pain relief	Chronic pain management
19	Relax	Chronic Pain	Relaxation and pain relief	Chronic pain management
20	Relax	Chronic Pain	Relaxation and pain relief	Chronic pain management

[pdf] Guide

Selecting the Program on Model ET 7070 Pulse Output Potential Benefits You Should Feel Modes Rate

TENS Output Chronic Pain Gate Control 9 11 17 new preset modes guide ireliev 2018 01

...

lang:en score:23 filesize: 517.2 K page\_count: 1 document date: 2017-09-11



## iRenew™ TENS + EMS System Step by Step Quick Start Guide

When you are familiar with the operation of this device, use the following steps in order as a quick reference to set up and operate your ET 7070 system. For more information, refer to the instruction manual.

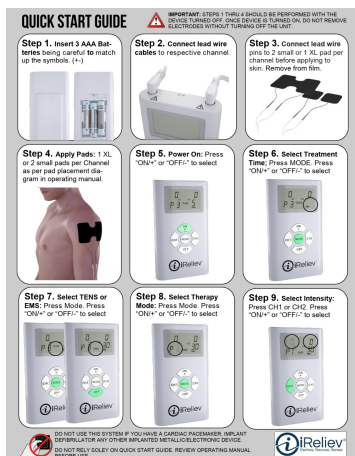


[\[pdf\]](#) Quick Start Guide Guide

IM SA 084 RevA19 iRenew TENS System Step by Quick Start Guide When you are familiar with the operation of this device use following steps in order as a quick reference to set up and operate your ET 7070 QSG ireliev 2020 03

...

lang:en score:22 filesize: 2.4 M page\_count: 2 document date: 2019-08-27



[\[pdf\]](#) User Manual Quick Start Guide Diagram

MW Step 6 Select Treatment series being careful to match up the symbols IMPORTANT STEPS 1 THRU 4 SHOULD BE PERFORMED WITH THE DEVICE TURNED OFF ONCE IS View iReliev ET 7070 Quick Start Guide8 5X11 ireliev 2017 10 |||

Step 1. Insert 3 AAA Bat- teries being careful to match up the symbols. - IMPORTANT: STEPS 1 THRU 4 SHOULD BE PERFORMED WITH THE DEVICE TURNED OFF. ONCE DEVICE IS TURNED ON, DO NOT REMOVE ELECTRODES WITHOUT TURNING OFF THE UNIT. Step 2. Connect lead wire cables to respective channel. Step 3. C...

lang:en score:14 filesize: 624.24 K page\_count: 1 document date: 2016-05-20