

GLOBE 90718

GLOBE Electric 90718 3" LED IC Rated Swivel Round Trim Recessed Lighting Kit User Manual

Model: 90718 | Brand: GLOBE Electric

1. INTRODUCTION

This manual provides comprehensive instructions for the installation, operation, and maintenance of your GLOBE Electric 90718 3" LED IC Rated Swivel Round Trim Recessed Lighting Kit. This kit features adjustable trim for directional lighting, patented PUSH-N-CLICK clips for easy installation, and is IC rated for direct contact with insulation when used with the included LED bulbs. Please read this manual thoroughly before beginning installation to ensure safe and proper use.

2. SAFETY INFORMATION

WARNING: This product may expose you to chemicals including lead, which is known to the State of California to cause cancer and birth defects or other reproductive harm. For more information go to www.P65Warnings.ca.gov.

- Always turn off power at the circuit breaker before installing, servicing, or cleaning the fixture.
- Consult a qualified electrician if you are unsure about the installation process or wiring.
- Ensure all electrical connections are secure and comply with local electrical codes.
- The fixture is IC Rated (Insulation Contact Rated) when used with the included LED bulbs, allowing direct contact with insulation. If other bulb types are used, the IC rating may not apply.
- Handle the metal housing with care during installation as some edges may be sharp.
- Do not exceed the maximum wattage specified for the bulbs.

3. PACKAGE CONTENTS

The GLOBE Electric 90718 Recessed Lighting Kit (4-Pack) includes the following components:

- 4 x Recessed Lighting Fixtures (Housing and Trim)

- 4 x GU10 Bi-Pin Base MR16 Shape LED Bulbs (5.5W, 400 lumens, 3000K warm white)
- Mounting Hardware
- Instruction Sheet (this manual)



Image: Contents of the 4-pack recessed lighting kit.

4. SPECIFICATIONS

Feature	Detail
Brand	GLOBE
Model Number	90718
Color	4" White Round Swivel
Material	Alloy Steel (Galvanized Steel Construction)
Light Fixture Form	Recessed
Product Dimensions	4.92"L x 8.27"W x 11.42"H (Fixture: 3" diameter, 4.13" height; Junction Box: 2.063" height, 6.77" length)

Feature	Detail
Hole Size Required	3.25 inches
Power Source	Hardwired
Voltage	120 Volts
Light Source Type	LED (GU10 Bi-Pin Base MR16 Shape)
Wattage (per bulb)	5.5 watts (50W equivalent)
Brightness (per bulb)	400 Lumens
Color Temperature	3000 Kelvin (Warm White)
CRI	80
Bulb Life	25,000+ hours
Special Features	IC Rated, Dimmable (with compatible dimmer switch, not included), Adjustable Swivel Trim, Push-N-Click Clips
Indoor/Outdoor Usage	Indoor (Damp Rated for bathrooms/showers)

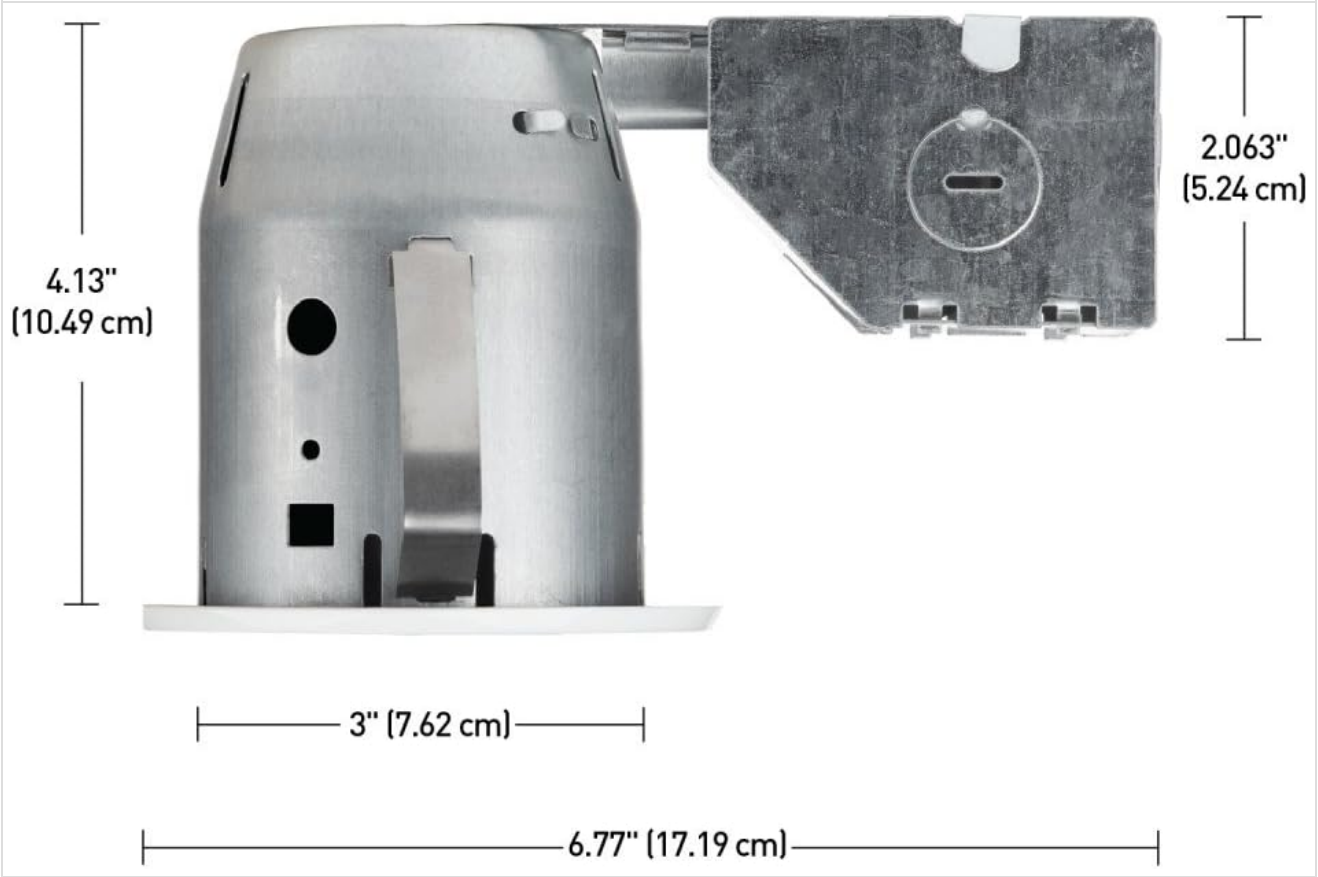


Image: Detailed dimensions of the recessed lighting fixture.

5. INSTALLATION

Follow these steps for proper installation. It is recommended to consult a licensed electrician for wiring or installation if you are not familiar with electrical work.

1. **Cut Hole:** Use the provided template to mark the exact hole size and location on your ceiling. The recommended hole size is 3.25 inches.
2. **Connect Wires:** Open the lid of the electrical junction box. Remove the appropriate knockout hole and insert the electrical cable using a connector (not included). Connect the household wiring to the fixture's wiring (black to black, white to white, ground to ground) using wire nuts. Close the junction box lid securely.
3. **Insert Housing:** Carefully insert the fixture housing into the cut hole in the ceiling.
4. **Secure with Push-N-Click Clips:** Use your hand to push and click the patented Push-N-Click clips into place. These clips are fully adjustable and extra wide to grip uneven surfaces, providing a simple, tool-free installation and a secure fit on various ceiling heights (single drywall, double drywall, soffit).
5. **Secure Bulb into Trim:** The GU10 MR16 LED bulb is secured into the trim using spring clips. Ensure the bulb is firmly seated.
6. **Connect Bulb to Socket:** Connect the bulb's pins to the socket within the fixture.
7. **Final Placement:** Push the trim assembly into the housing until it sits flush with the ceiling.

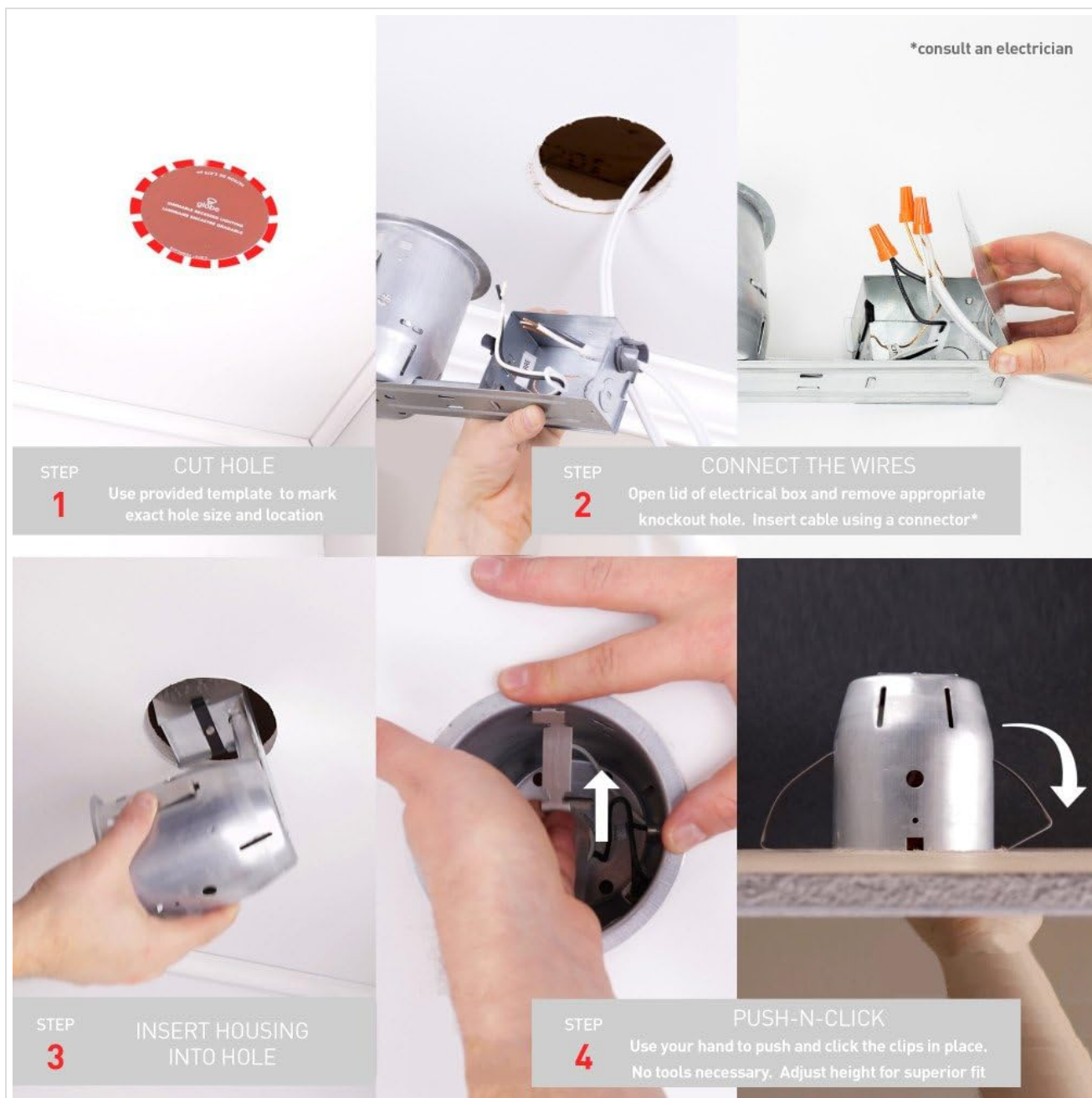


Image: Visual guide for the installation steps.

Video: Official GLOBE Electric installation guide for recessed lighting, demonstrating the process from unboxing to final placement. This video highlights the galvanized steel construction, extra-large junction box for easy access, tempered steel spring for durability, patented Push-N-Click system for tool-free installation, and IC rating for insulation contact. It also shows how the clips adjust for different ceiling thicknesses and the process of securing the bulb and trim.



Image: Example of installed recessed lights in a bathroom setting.



Image: Example of installed recessed lights in a kitchen setting.

6. OPERATION

Once installed, the GLOBE Electric recessed lights operate like standard lighting fixtures. They can be controlled by a wall switch. The included GU10 MR16 LED bulbs provide 400 lumens of warm white light (3000K).

- **Directional Lighting:** The swivel trim allows you to adjust the direction of the light, making it ideal for highlighting specific areas such as artwork, photographs, or architectural features.
- **Dimmable:** These fixtures are dimmable when used with a compatible dimmer switch (not included). Ensure your dimmer switch is rated for LED loads to prevent flickering or damage.

7. MAINTENANCE

To maintain the appearance and performance of your recessed lighting kit, follow these simple guidelines:

- **Cleaning:** Ensure the power is off before cleaning. Wipe the trim and bulb with a soft, dry cloth. Avoid using abrasive cleaners, solvents, or polishes as they may damage the finish.
- **Bulb Replacement:** The included LED bulbs have a long lifespan (25,000+ hours). If a bulb needs replacement, ensure the power is off. Gently remove the old GU10 MR16 bulb from the trim by disengaging the spring clips and pulling it out of the socket. Insert a new GU10 Bi-Pin Base MR16 LED bulb, ensuring the pins align with the socket, and secure it with the spring clips.

8. TROUBLESHOOTING

If you encounter issues with your recessed lighting kit, refer to the following common problems and solutions:

Problem	Possible Cause	Solution
Light does not turn on.	No power to the fixture, loose wiring, faulty bulb.	Check circuit breaker. Verify all wire connections are secure. Replace bulb if necessary.
Light flickers or dims inconsistently.	Incompatible dimmer switch, loose bulb connection, low voltage.	Ensure dimmer is specifically rated for LED lighting. Check bulb connection. Consult an electrician for voltage issues.
Fixture overheats or shuts off.	Incorrect bulb type (non-LED), poor ventilation (unlikely with IC rating).	Ensure only the included LED bulbs or equivalent LED bulbs are used. The integrated thermal cut-off switch prevents overheating with proper bulbs.
Difficulty installing or securing fixture.	Incorrect hole size, clips not fully engaged.	Verify hole size is 3.25 inches. Ensure Push-N-Click clips are fully extended and engaged with the drywall.

9. WARRANTY AND SUPPORT

This GLOBE Electric 90718 Recessed Lighting Kit is backed by a **5-year manufacturer's limited warranty**. This warranty covers defects in materials and workmanship under normal use.

For any questions, technical assistance, or warranty claims, please contact GLOBE Electric customer service. Our dedicated customer service team is available to assist you.



Image: GLOBE Electric company logo.

© 2024 GLOBE Electric. All rights reserved.