

## Galanz Gal9823-5

# Galanz Gal9823-5 Microwave PCB Control Board User Manual

Model: Gal9823-5

## 1. INTRODUCTION

---

This manual provides essential information for the proper handling, installation, and maintenance of the Galanz Gal9823-5 Microwave PCB Control Board. This component is a critical part of your microwave oven's functionality, responsible for controlling various operations. Please read this manual thoroughly before attempting any installation or repair.

## 2. SAFETY INFORMATION

---

**WARNING:** Microwave ovens contain high-voltage components that can store a lethal electrical charge even when unplugged. Attempting repairs without proper knowledge and safety precautions can result in serious injury or death. It is strongly recommended that installation and replacement of this PCB be performed by a qualified and certified technician.

- Always disconnect the microwave oven from the power supply before beginning any work.
- Discharge any capacitors before touching internal components.
- Wear appropriate personal protective equipment (PPE), including insulated gloves.
- Do not operate the microwave oven with the cover removed.
- Ensure all connections are secure and correct before restoring power.

## 3. PRODUCT OVERVIEW

---

The Galanz Gal9823-5 PCB Control Board is the central electronic component responsible for managing the microwave oven's functions, including cooking cycles, display, keypad input, and safety interlocks. It integrates various circuits to ensure precise operation.

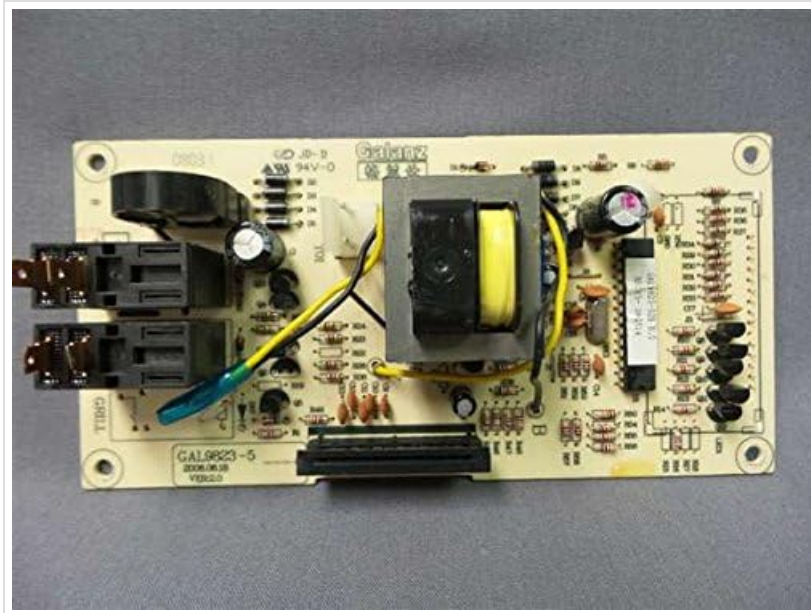


Figure 1: Galanz Gal9823-5 Microwave PCB Control Board. An image showing the Galanz Gal9823-5 Microwave PCB Control Board. The board is rectangular, light-colored, with various electronic components including a prominent yellow and black transformer, capacitors, resistors, and connectors. Two black relay-like components are visible on the left side.

## 4. INSTALLATION AND SETUP

---

This section provides general guidelines for the installation of the control board. Due to the complexity and safety risks involved, professional installation is highly recommended.

### 4.1 Pre-Installation Steps

1. Ensure the microwave oven is unplugged from the wall outlet.
2. Carefully remove the outer casing of the microwave oven to access the internal components. Refer to your specific microwave model's service manual for detailed disassembly instructions.
3. Identify the existing control board and photograph all wire connections before disconnecting them. This will aid in correct reassembly.
4. Discharge any high-voltage capacitors using an appropriate tool.

### 4.2 Board Replacement

1. Carefully disconnect all wires and connectors from the old control board. Note their positions.
2. Unscrew or unclip the old board from its mounting points.
3. Position the new Galanz Gal9823-5 PCB Control Board in place and secure it with the original screws or clips.
4. Reconnect all wires and connectors to the new board, ensuring they match the photographs taken earlier. Double-check every connection.

### 4.3 Post-Installation

1. Before reattaching the outer casing, perform a visual inspection to ensure no wires are pinched or loose.
2. Carefully reassemble the microwave oven casing.
3. Plug the microwave oven back into a grounded power outlet.
4. Test the microwave's functions to ensure proper operation.

## 5. FUNCTIONALITY AND OPERATION

---

The Galanz Gal9823-5 PCB Control Board is designed to seamlessly integrate with compatible Galanz microwave ovens. Once correctly installed, it enables the microwave to perform its intended functions, including:

- Controlling cooking power levels and times.
- Managing the display panel and user interface.
- Activating internal components such as the magnetron, turntable motor, and light.
- Monitoring safety interlocks to prevent operation when the door is open.

No direct user operation of the PCB is required or possible. Its operation is entirely dependent on the user's interaction with the microwave oven's control panel.

## 6. MAINTENANCE

---

The Galanz Gal9823-5 PCB Control Board is a sealed electronic component and requires no routine user maintenance. To ensure its longevity and proper function, consider the following general guidelines for your microwave oven:

- Keep the microwave oven clean, especially the interior and exterior surfaces, to prevent grease and food particles from accumulating.
- Ensure adequate ventilation around the microwave oven to prevent overheating of internal components.
- Avoid spilling liquids onto the control panel or into ventilation openings, as this can damage the internal electronics.
- If the microwave oven requires internal cleaning or inspection, always unplug it first and allow sufficient time for components to cool and discharge.

## 7. TROUBLESHOOTING

---

If your microwave oven experiences issues after replacing the control board, consider the following troubleshooting steps. Note that complex electrical issues should always be addressed by a qualified technician.

- **No Power/Display:**
  - Check if the microwave is properly plugged into a working outlet.
  - Verify the circuit breaker has not tripped.
  - Ensure all wire connections to the PCB are secure and correctly seated.
- **Incorrect Functionality/Error Codes:**
  - Double-check all wire connections against your pre-disassembly photographs. A single misconnected wire can cause various issues.
  - Consult your microwave oven's original user manual for specific error code meanings.
  - Ensure the correct PCB model (Gal9823-5) was installed for your microwave.
- **Intermittent Operation:**
  - Inspect for any loose connections or signs of damage on the board or wires.
  - Ensure the microwave is not overheating due to blocked vents.

If issues persist after these checks, professional diagnosis and repair are recommended.

## 8. SPECIFICATIONS

---

<b>Manufacturer</b>	Galanz
<b>Part Number</b>	Gal9823-5
<b>Item Weight</b>	1 pounds

<b>Product Dimensions</b>	8 x 4 x 4 inches
<b>Item Package Quantity</b>	1
<b>ASIN</b>	B00U1S4PVG
<b>Date First Available</b>	February 26, 2015

## 9. WARRANTY AND SUPPORT

---

For information regarding warranty coverage for the Galanz Gal9823-5 Microwave PCB Control Board, please refer to the warranty documentation provided with your original microwave oven or contact Galanz customer support directly. Support contact information can typically be found on the manufacturer's official website or within your microwave oven's original user manual.

For technical assistance or professional repair services, it is recommended to contact a certified appliance technician or Galanz authorized service center.