

Manuals+

[Q & A](#) | [Deep Search](#) | [Upload](#)

manuals.plus /

› [TOOLPORT](#) /

› [TOOLPORT 13x20 ft Marquee Party Tent PVC 700 N Canopy Instruction Manual](#)

TOOLPORT PRO Smart

TOOLPORT 13x20 ft Marquee Party Tent Instruction Manual

Model: PRO Smart

1. INTRODUCTION

This manual provides detailed instructions for the assembly, operation, maintenance, and troubleshooting of your TOOLPORT 13x20 ft Marquee Party Tent. Please read this manual thoroughly before attempting to set up or use the tent to ensure safe and correct usage.



Image 1.1: Fully assembled TOOLPORT 13x20 ft Marquee Party Tent. This image shows the tent's exterior with its white PVC canopy and arched window sections.

2. SAFETY INFORMATION

Adherence to these safety guidelines is crucial for preventing injury and damage to the tent.

- **Weather Conditions:** Do not set up or use the tent in severe weather conditions, including strong winds, heavy rain, snow, or thunderstorms. The tent is designed for temporary use and is not intended to withstand extreme weather.
- **Anchoring:** Always ensure the tent is securely anchored to the ground using the provided ground pegs and safety ropes. Insufficient anchoring can lead to the tent lifting or collapsing in windy conditions.
- **Fire Safety:** Keep all heat sources, open flames, and flammable materials away from the tent fabric. The PVC material is not fireproof.
- **Assembly:** Assembly should be performed by at least two adults. Follow all steps in the assembly instructions carefully.
- **Structural Integrity:** Do not hang heavy objects from the tent frame or canopy. The frame is designed to support the tent structure, not additional loads.
- **Site Selection:** Choose a level, clear area free from overhead obstructions (e.g., tree branches, power lines) and sharp objects on the ground.

3. PACKAGE CONTENTS

Verify that all components are present before beginning assembly. If any parts are missing or damaged, contact customer support.

- Steel Frame Components (tubes and connectors)
- PVC Roof Tarpaulin (one piece)
- PVC Sidewalls (with integrated wind deflectors and window sections)
- PVC Front and Rear Panels (front panel with entrances)
- Ground Pegs
- Safety Ropes
- Assembly Manual (this document)

4. SETUP INSTRUCTIONS

Follow these steps for proper assembly of your marquee tent. It is recommended that at least two people assist with the setup.

4.1 Frame Assembly

1. **Unpack Components:** Lay out all steel frame tubes and connectors on a clean, flat surface.
2. **Assemble Base Frame:** Connect the horizontal and vertical tubes to form the base rectangle of the tent. Ensure all connections are securely bolted.
3. **Install Roof Structure:** Attach the roof support tubes and ridge poles to the vertical uprights. The connections are bolted for stability.

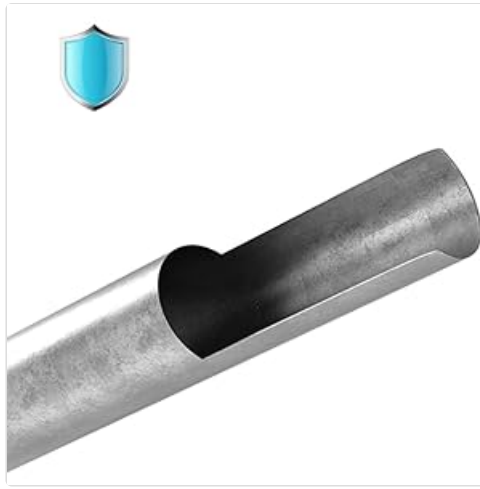


Image 4.1: Diagram illustrating the steel frame structure of the tent. Numbered components indicate different parts of the frame for assembly reference.



Image 4.2: Close-up view of a bolted connection point within the steel frame, highlighting the secure fastening mechanism.

4.2 Canopy and Sidewall Installation

4. **Drape Roof Tarpaulin:** Carefully drape the one-piece PVC roof tarpaulin over the assembled frame. Ensure it is centered and evenly distributed.
5. **Attach Sidewalls:** Secure the PVC sidewalls to the frame. The sidewalls feature integrated wind deflectors for improved climate control.
6. **Secure Tarpaulins:** Use the provided elastic loops and eyelets to securely fasten all tarpaulins to the frame.

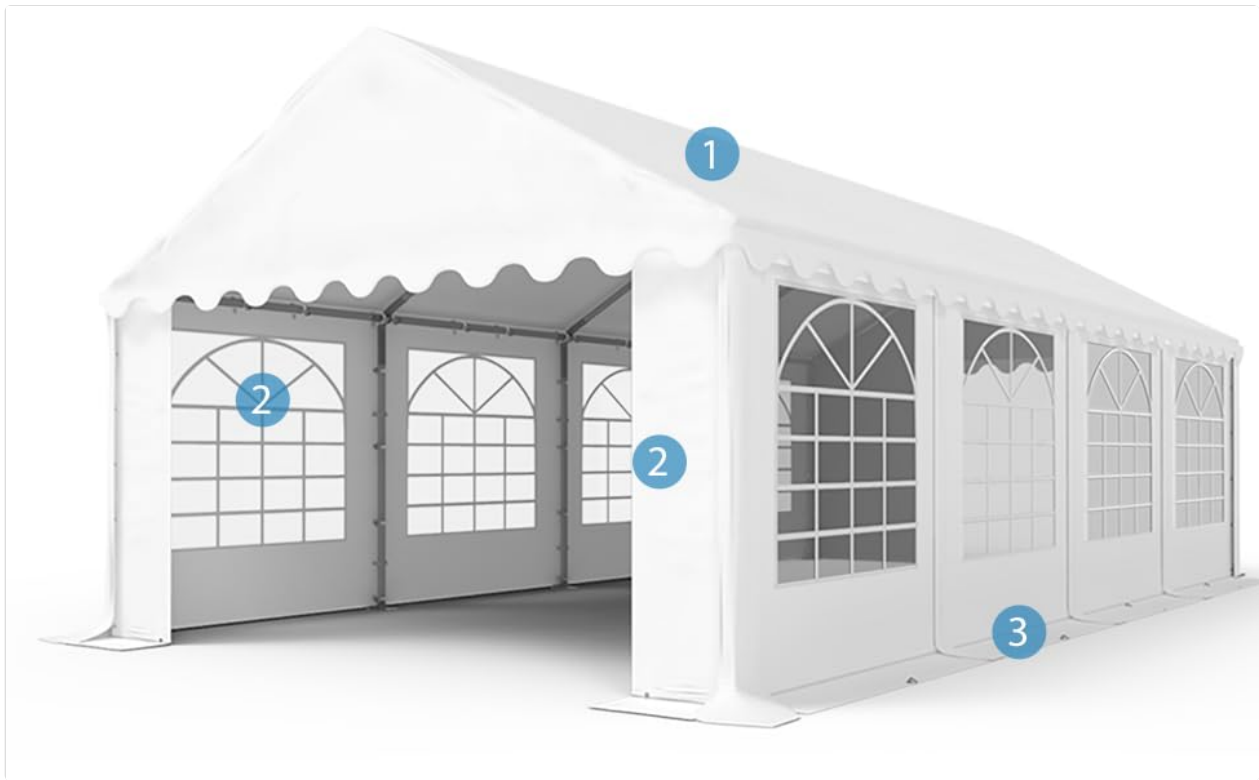


Image 4.3: An assembled tent with key components labeled: 1 for the roof, 2 for the sidewalls, and 3 for the wind deflector along the base.



Image 4.4: A close-up of hands demonstrating how to secure the tent tarpaulin to the frame using an elastic loop threaded through an eyelet.

4.3 Anchoring

7. **Secure Foot Plates:** Insert ground pegs through the holes in the foot plates of each vertical pole to anchor the tent to the ground.
8. **Attach Safety Ropes:** Connect the safety ropes to designated points on the tent frame and secure them firmly to the ground using additional pegs. This provides extra stability against wind.



Image 4.5: Detail of a tent pole's foot plate firmly secured into the grass using a ground peg, demonstrating proper anchoring.

5. OPERATING INSTRUCTIONS

Once assembled, the tent is ready for use. Consider the following for optimal experience:

- **Entrances:** The front panel features entrances that can be rolled up and secured to allow access.
- **Ventilation:** The sidewalls can be partially opened or removed to provide ventilation, especially in warm weather. The integrated wind deflectors help manage airflow while maintaining privacy.
- **Interior Space:** The tent provides a spacious interior suitable for various events.



Image 5.1: Interior perspective of the marquee tent, showcasing the spacious area and the windowed sidewalls that allow natural light.

6. MAINTENANCE

Regular maintenance will extend the lifespan of your tent.

- **Cleaning:** Clean the PVC tarpaulins with mild soap and water. Avoid harsh chemicals or abrasive cleaners, which can damage the material. Rinse thoroughly and allow to air dry completely before storage.
- **Frame Inspection:** Periodically check all frame connections and bolts for tightness. Tighten any loose bolts to maintain structural integrity.
- **Storage:** When not in use, disassemble the tent and store all components in a dry, cool place, away from direct sunlight and pests. Ensure all fabric parts are completely dry to prevent mold and mildew.
- **Repair:** Small tears in the PVC tarpaulin can often be repaired with a suitable PVC repair kit.

7. TROUBLESHOOTING

This section addresses common issues you might encounter.

- **Tent Instability:** Ensure all ground pegs are fully inserted and safety ropes are taut. Check that all frame connections are securely bolted. High winds require additional anchoring measures.
- **Water Accumulation on Roof:** Ensure the roof tarpaulin is stretched tightly and evenly over the frame to prevent sagging, which can lead to water pooling. Clear any debris from the roof regularly.
- **Difficulty Assembling Frame:** Double-check that you are using the correct tubes and connectors for each section as per the assembly diagram. Ensure bolts are not overtightened prematurely, allowing for slight adjustments during assembly.
- **Zippers Sticking:** Apply a silicone-based lubricant to the zipper teeth to improve smooth operation. Keep zippers clean from dirt and debris.

8. SPECIFICATIONS

Feature	Detail
Brand	TOOLPORT
Model Number	PRO Smart
Size	13x20 ft (240"L x 156"W x 79"H)
Floor Area	23.57 Square Meters
Material (Frame)	Steel (approx. 38mm tubes, 42mm connectors)
Material (Canopy/Tarpaulins)	PVC 700 N
Color	White
Water Resistance Level	Waterproof
Ultraviolet Light Protection	50+
Item Weight	201 pounds (91300 Grams)
Assembly Required	Yes

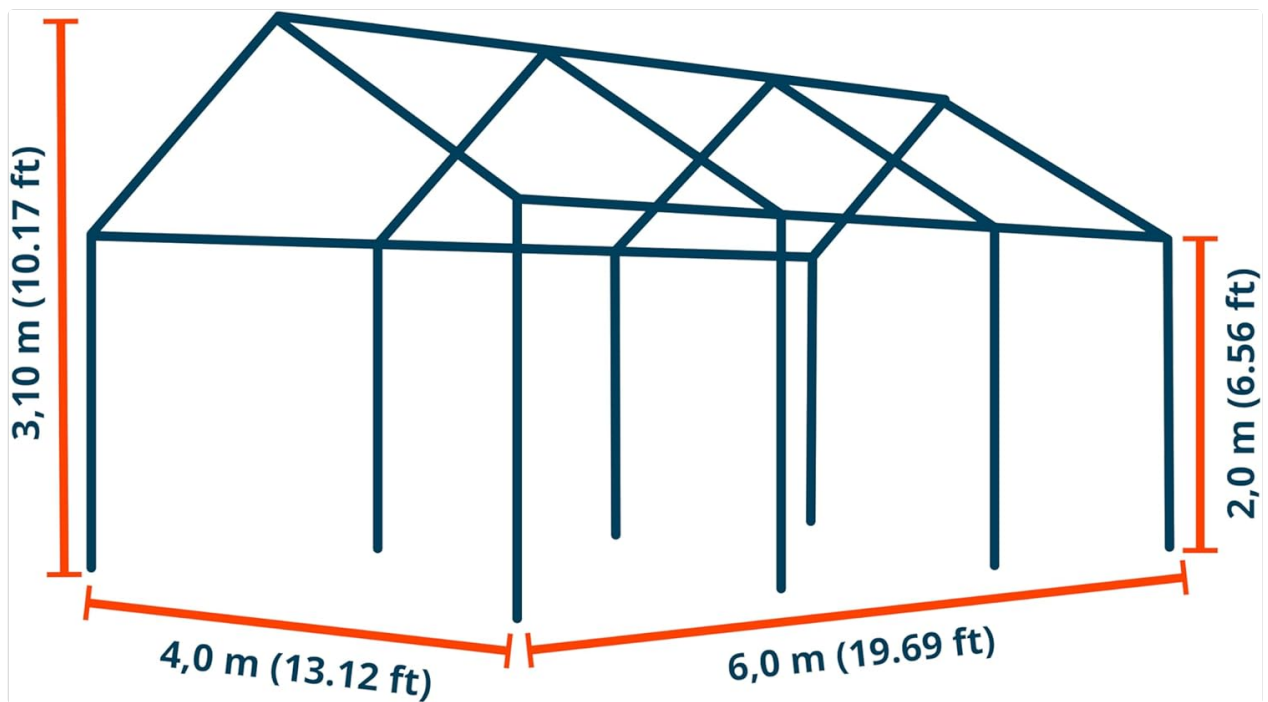


Image 8.1: A technical diagram illustrating the key dimensions of the tent frame, including height, width, and length, provided in both meters and feet.

9. WARRANTY AND SUPPORT

For warranty information or technical support, please refer to the manufacturer's official website or contact TOOLPORT customer service directly. Keep your purchase receipt as proof of purchase.