

## Char-Broil 465133010

# Char-Broil Table Top Portable Gas Grill User Manual

Model: 465133010

## 1. INTRODUCTION

---

Thank you for purchasing the Char-Broil Table Top Portable Gas Grill. This manual provides essential information for the safe assembly, operation, maintenance, and troubleshooting of your grill. Please read this manual thoroughly before using your grill and retain it for future reference.

This portable gas grill is designed for outdoor use with 16.4-ounce or 14.1-ounce propane cylinders, featuring an 11,000 BTU burner and a 187-square inch chrome-plated cooking grate, capable of cooking up to 8 hamburgers at once. Its folding legs ensure easy portability and compact storage.



*Image: The Char-Broil Table Top Portable Gas Grill in its compact, closed state with its folding legs extended, ready for use or transport.*

## 2. IMPORTANT SAFETY INFORMATION

---

**WARNING: For outdoor use only. Do not store or use gasoline or other flammable vapors and liquids in the vicinity of this or any other appliance.**

**DANGER: Carbon Monoxide Hazard. This appliance can produce carbon monoxide which has no odor. Using it in an enclosed space can kill you. Never use this appliance in an enclosed space such as a camper, tent, car, or home.**

- Always operate the grill on a level, stable, non-combustible surface.
- Maintain proper clearance from combustible materials: at least 24 inches from sides and back.
- Never leave a lit grill unattended.
- Keep children and pets away from the grill at all times.
- Do not attempt to light the burner with the lid closed.
- Always perform a leak test before initial use and after replacing the propane cylinder.
- Use only 16.4-ounce or 14.1-ounce disposable propane cylinders.
- Ensure all connections are tight before opening the gas supply.

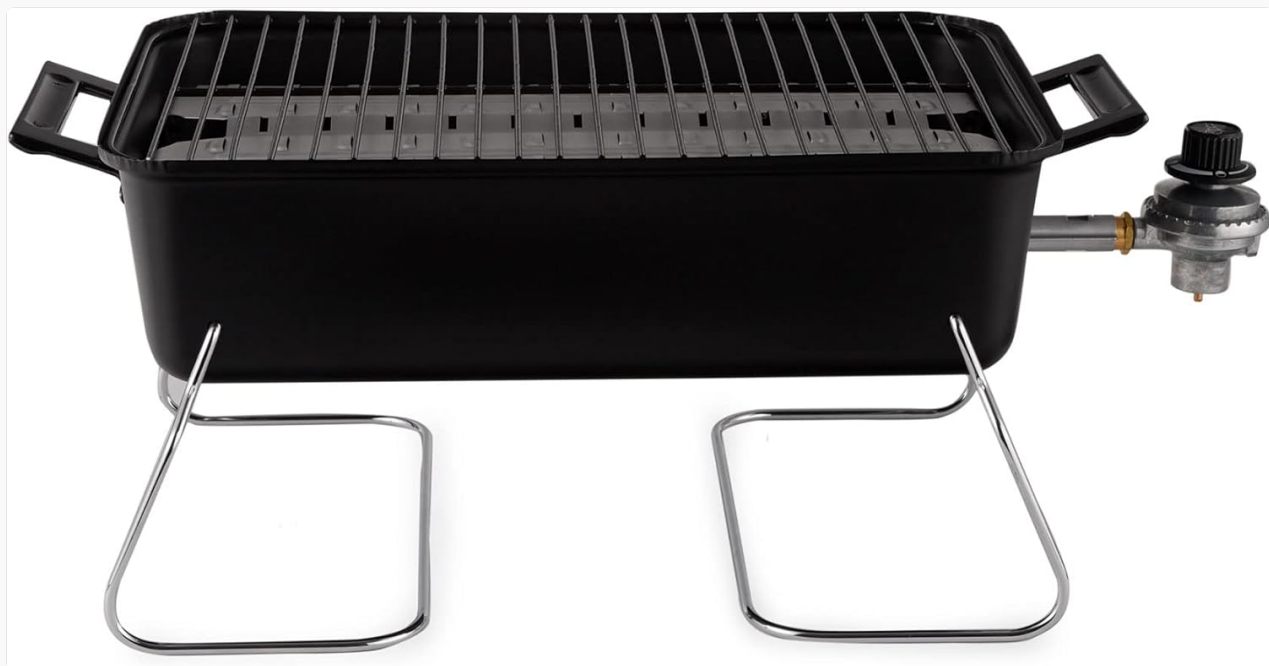
*Proposition 65 Warning: This product can expose you to chemicals including carbon monoxide, which is known to the State of California to cause birth defects or other reproductive harm. For more information go to [www.P65Warnings.ca.gov](http://www.P65Warnings.ca.gov).*

### 3. SETUP AND ASSEMBLY

---

Your Char-Broil Table Top Portable Gas Grill requires minimal assembly. Follow these steps to prepare your grill for first use:

1. **Unpack Components:** Carefully remove all parts from the packaging. Ensure all components listed in the packing list are present.
2. **Extend Folding Legs:** Unfold the chrome-plated legs until they securely lock into position, providing a stable base for the grill. The legs are designed to fold and secure to the grill top for easy portability.
3. **Install Cooking Grate:** Place the chrome-plated cooking grate onto the grill body. Ensure it sits securely over the burner area.
4. **Connect Propane Cylinder:** Ensure the grill's control knob is in the "OFF" position. Thread a 16.4-ounce or 14.1-ounce propane cylinder onto the regulator connection until hand-tight. Do not overtighten.
5. **Perform Leak Test:** Before first use, and after every cylinder change, perform a leak test. Mix a solution of equal parts liquid dish soap and water. With the gas supply on (cylinder valve open) and the grill control knob off, apply the solution to all gas connections. If bubbles appear, there is a leak. Tighten the connection or replace the part if necessary. Do not use the grill if a leak is present.



*Image: A front view of the Char-Broil Portable Gas Grill, highlighting the attached propane regulator and the sturdy, extended folding legs.*

### 4. OPERATING INSTRUCTIONS

---

Follow these steps for safe and effective operation of your portable gas grill:

1. **Pre-Lighting Check:** Ensure the grill is on a stable, level surface outdoors, away from combustible materials. Confirm the propane cylinder is securely attached.

2. **Open Lid:** Always open the grill lid before attempting to light the burner.
3. **Light the Burner:** Turn the control knob slowly to the "HIGH" position. Immediately press and hold the igniter button (if equipped) or use a long match/lighter to ignite the burner through the lighting hole. If the burner does not light within 5 seconds, turn the control knob to "OFF", wait 5 minutes for gas to dissipate, and then repeat the lighting procedure.
4. **Preheat Grill:** Once lit, close the lid and allow the grill to preheat for 5-10 minutes on "HIGH" to reach desired cooking temperature.
5. **Adjust Temperature:** Use the control knob to adjust the flame intensity and cooking temperature as needed.
6. **Cooking:** Place food on the chrome-plated cooking grate. The 187-square inch surface is ample for various items.
7. **Shutting Down:** When finished cooking, turn the control knob to the "OFF" position. Close the valve on the propane cylinder. Allow the grill to cool completely before moving or storing.



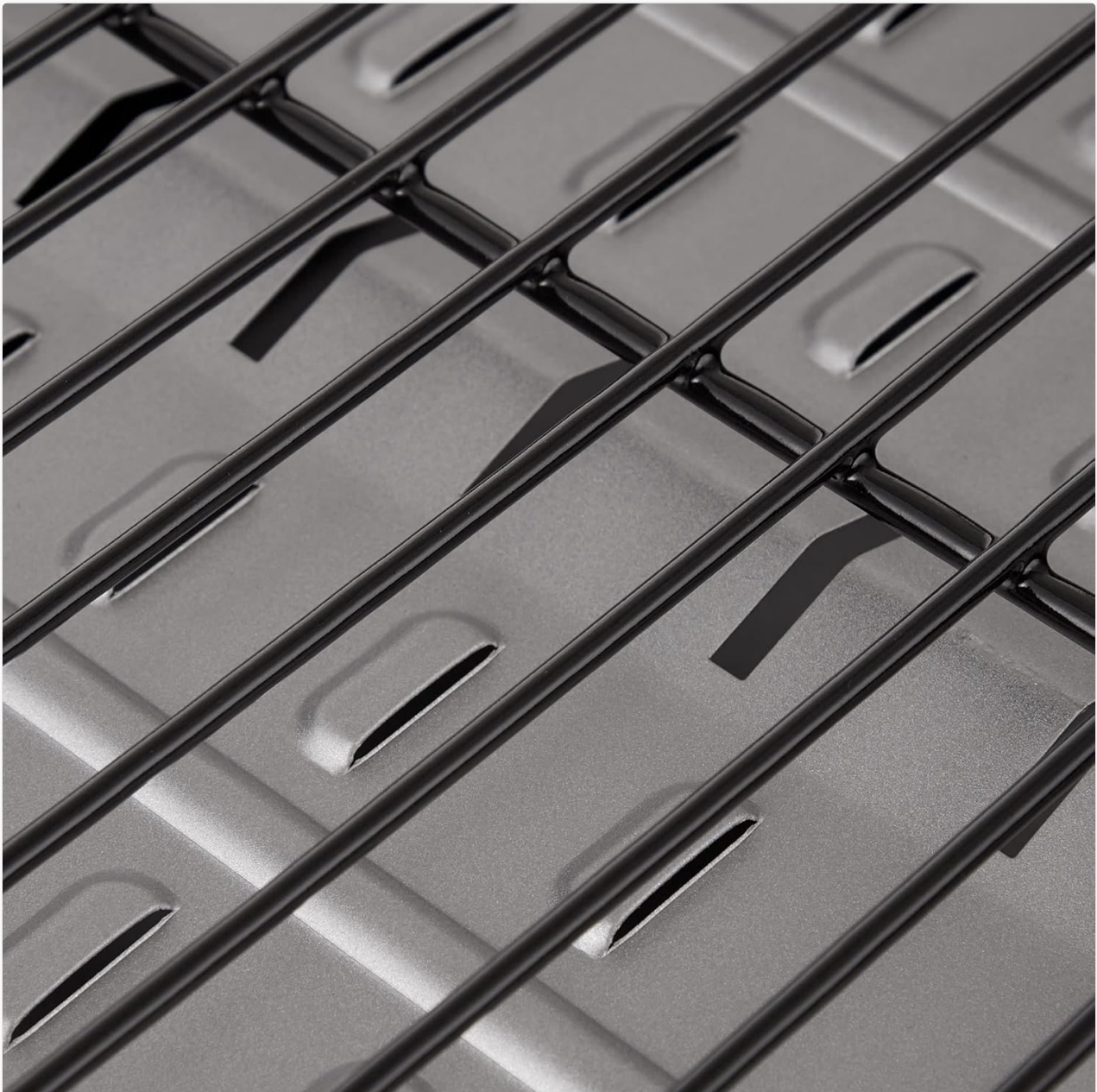
*Image: The Char-Broil Portable Gas Grill actively in use on a red and white checkered picnic table, grilling hot dogs and hamburgers, demonstrating its outdoor functionality.*

## 5. MAINTENANCE AND CLEANING

---

Regular cleaning and maintenance will extend the life of your grill and ensure optimal performance.

- **Cooking Grate:** The chrome-plated cooking grate is easy to clean and dishwasher-safe. For best results, clean after each use once the grill has cooled. Use a grill brush to remove food residue. For stubborn spots, wash with warm, soapy water.
- **Burner:** Periodically inspect the burner ports for blockages (e.g., spider webs, food debris). Use a wire brush or paper clip to clear any obstructions.
- **Exterior Surfaces:** Wipe down exterior surfaces with a damp cloth and mild detergent. Avoid abrasive cleaners that could damage the finish.
- **Grease Tray:** Regularly empty and clean the grease tray located beneath the burner.
- **Storage:** When not in use, store the grill in a dry, protected area. Disconnect the propane cylinder and store it upright in a well-ventilated area, away from direct sunlight or heat sources. The folding legs secure to the grill top for compact storage.



*Image: A detailed close-up of the Char-Broil Portable Gas Grill's chrome-plated cooking grate, showing its construction and surface.*

## 6. TROUBLESHOOTING

If you encounter issues with your grill, refer to the following common problems and solutions:

Problem	Possible Cause	Solution
Burner will not light	No gas flow; clogged burner ports; faulty igniter.	Check propane cylinder connection and ensure valve is open. Clear burner ports. Use a long match/lighter to manually light.
Low flame or uneven heat	Low gas in cylinder; clogged burner ports; regulator issue.	Replace propane cylinder. Clean burner ports. Ensure regulator is properly connected and not in bypass mode.
Flare-ups	Excess grease buildup; high heat.	Clean grease tray and grill interior regularly. Reduce heat setting.
Gas odor	Gas leak.	Immediately turn off gas supply. Perform a leak test. Do not use if leak persists. Contact customer support.

## 7. SPECIFICATIONS

Feature	Detail
Model Number	465133010
Brand	Char-Broil
Product Dimensions (D x W x H)	5.25" x 18.25" x 12.5"
Cooking Surface Area	187 - 190 sq. inches
Heating Power	11,000 BTU
Fuel Type	Propane Gas (16.4-ounce or 14.1-ounce cylinders)
Main Burner Count	1
Cooking Grate Material	Chrome-plated
Frame Material	Stainless Steel
Color	Black
Assembly Required	Yes
Special Feature	Portable, Folding Legs
Included Components	Folding Legs, Heat-Resistant Handles

## 8. WARRANTY AND SUPPORT

---

For warranty information, product registration, or technical support, please contact Char-Broil customer service directly. Keep your purchase receipt as proof of purchase.

You can typically find contact information on the manufacturer's official website or within the product packaging. *Please note that specific warranty terms and conditions may vary and are subject to the manufacturer's policy at the time of purchase.*