

Magic Chef ES1850

Magic Chef ES1850 Automatic 1.5 lb. Breadmaker Instruction Manual

Model: ES1850

1. INTRODUCTION

This manual provides comprehensive instructions for the safe and efficient operation of your Magic Chef ES1850 Automatic 1.5 lb. Breadmaker. Please read all instructions carefully before use and retain this manual for future reference. Proper use and maintenance will ensure optimal performance and longevity of your appliance.

2. IMPORTANT SAFETY INSTRUCTIONS

When using electrical appliances, basic safety precautions should always be followed, including the following:

- Read all instructions before operating the breadmaker.
- Do not touch hot surfaces. Use oven mitts or gloves when handling hot parts.
- To protect against electrical shock, do not immerse the cord, plugs, or the appliance in water or other liquid.
- Close supervision is necessary when any appliance is used by or near children.
- Unplug from outlet when not in use and before cleaning. Allow to cool before putting on or taking off parts.
- Do not operate any appliance with a damaged cord or plug, or after the appliance malfunctions or has been damaged in any manner.
- The use of accessory attachments not recommended by the appliance manufacturer may cause injuries.
- Do not use outdoors.
- Do not let the cord hang over the edge of a table or counter, or touch hot surfaces.
- Do not place on or near a hot gas or electric burner, or in a heated oven.

- Extreme caution must be used when moving an appliance containing hot oil or other hot liquids.
- Always attach the plug to the appliance first, then plug the cord into the wall outlet. To disconnect, turn any control to 'off', then remove the plug from the wall outlet.
- Do not use the appliance for other than intended household use.

3. PRODUCT OVERVIEW

The Magic Chef ES1850 is an automatic 1.5 lb. breadmaker designed for convenient home use. It simplifies the bread-making process with its automated features and versatile settings.

Key Features:

- **Automatic 1.5 lb. Capacity:** Capable of baking a 1.5-pound loaf of bread.
- **8 Baking Cycles:** Offers a variety of programs including Basic, Whole Wheat, French, Sweet, Super Rapid (Basic Bread), Super Rapid (Whole Wheat), Dough, and Bake.
- **13-Hour Delay Timer:** Allows for delayed baking, enabling fresh bread at a desired time.
- **Included Accessories:** Comes with a recipe booklet, measuring cup, and spoon to assist with preparation.

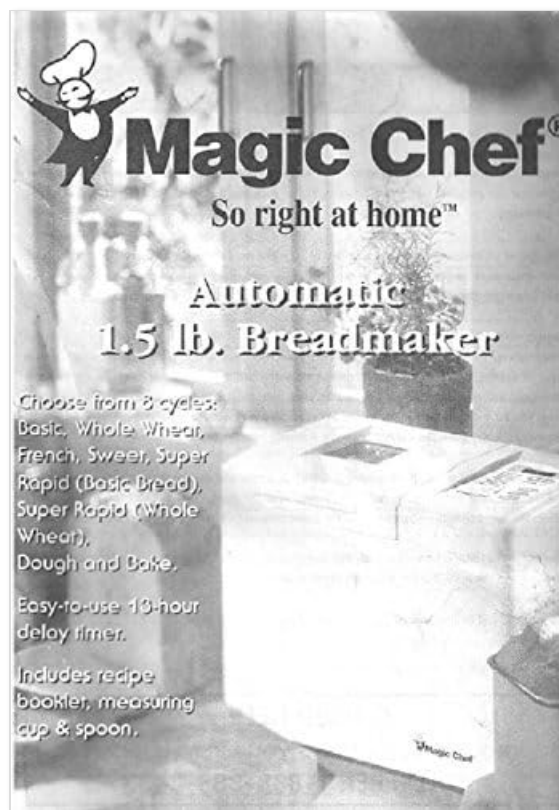


Figure 1: Magic Chef Automatic 1.5 lb. Breadmaker. This image displays the front cover of the instruction manual, illustrating the breadmaker and listing its primary features, including 8 baking cycles, a 13-hour delay timer, and included accessories.

4. SETUP

4.1 Unpacking

- Carefully remove the breadmaker and all accessories from the packaging.
- Remove any protective films or stickers from the appliance.

- Retain packaging materials for future storage or transport, if desired.

4.2 Placement

- Place the breadmaker on a stable, flat, and heat-resistant surface.
- Ensure adequate ventilation by placing the appliance away from walls and other heat-sensitive objects.
- Do not place the breadmaker near water sources or in direct sunlight.

4.3 Initial Cleaning

- Before first use, wipe the exterior of the breadmaker with a soft, damp cloth.
- Wash the bread pan and kneading paddle with warm, soapy water. Rinse thoroughly and dry completely.
- Do not immerse the main unit of the breadmaker in water or any other liquid.

5. OPERATING INSTRUCTIONS

5.1 Adding Ingredients

1. Ensure the kneading paddle is securely attached to the shaft inside the bread pan.
2. Add liquid ingredients (water, milk, eggs, oil) to the bread pan first.
3. Next, add dry ingredients (flour, sugar, salt, dry milk).
4. Create a small indentation in the center of the dry ingredients and add the yeast. Ensure the yeast does not come into direct contact with liquids or salt initially.
5. Place the bread pan into the breadmaker and close the lid securely.

5.2 Selecting a Cycle

- Plug the breadmaker into a grounded electrical outlet.
- Use the 'MENU' button on the control panel to select the desired baking cycle. The ES1850 offers 8 cycles: Basic, Whole Wheat, French, Sweet, Super Rapid (Basic Bread), Super Rapid (Whole Wheat), Dough, and Bake.
- Refer to the recipe booklet for recommended cycles for different bread types.

5.3 Using the Delay Timer

- After selecting your cycle, use the 'TIMER' buttons (usually '+' and '-') to set the desired delay time. The maximum delay is 13 hours.
- The delay time includes the baking time. For example, if you want bread ready in 8 hours and the selected cycle takes 3 hours, set the delay timer to 8 hours.
- Press the 'START/STOP' button to activate the delay timer. The breadmaker will begin operation after the set delay period.

5.4 Starting and Stopping

- To start a cycle immediately, select the desired cycle and press the 'START/STOP' button.
- To stop a cycle at any time, press and hold the 'START/STOP' button for a few seconds until the breadmaker resets.
- Once a cycle is complete, the breadmaker may enter a 'KEEP WARM' phase. Unplug the appliance

and carefully remove the bread pan using oven mitts.

6. CARE AND MAINTENANCE

6.1 Cleaning

- Always unplug the breadmaker from the power outlet and allow it to cool completely before cleaning.
- **Exterior:** Wipe the exterior of the breadmaker with a dry cloth. Do not use abrasive cleaners or immerse the main unit in water.
- **Bread Pan and Kneading Paddle:** These parts are typically non-stick and should be washed by hand with warm, soapy water. Rinse thoroughly and dry completely. Avoid using metal utensils or abrasive sponges that could damage the non-stick coating.
- **Lid and Viewing Window:** Wipe with a damp cloth. For stubborn stains, use a mild detergent.

6.2 Storage

- Ensure the breadmaker is clean and completely dry before storing.
- Store the appliance in a clean, dry place, away from direct sunlight and extreme temperatures.
- Do not place heavy objects on top of the breadmaker during storage.

7. TROUBLESHOOTING

This section addresses common issues you might encounter with your Magic Chef ES1850 breadmaker. If the problem persists, please contact customer support.

- **Bread does not rise:** Check the freshness of your yeast. Ensure water temperature is appropriate (not too hot or cold). Verify ingredient measurements are accurate.
- **Bread is too dense or heavy:** This can be caused by too much flour, too little liquid, or inactive yeast. Ensure correct flour type for the recipe.
- **Bread sticks to the pan:** Ensure the bread pan and kneading paddle are clean and the non-stick coating is intact. A light coating of cooking oil or spray can sometimes help before adding ingredients.
- **Appliance does not turn on:** Check that the power cord is securely plugged into a functional electrical outlet. Test the outlet with another appliance.
- **Loud noise during operation:** This is often normal during kneading cycles. If the noise is excessive or unusual, ensure the bread pan is properly seated.

8. SPECIFICATIONS

Technical Specifications

- **Model:** ES1850
- **Type:** Automatic Breadmaker
- **Capacity:** 1.5 lb. loaf
- **Baking Cycles:** 8 (Basic, Whole Wheat, French, Sweet, Super Rapid (Basic Bread), Super Rapid (Whole Wheat), Dough, Bake)
- **Delay Timer:** Up to 13 hours
- **ASIN:** B00SO05R6K


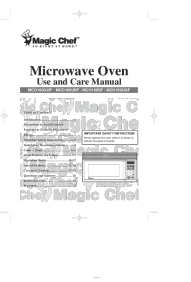
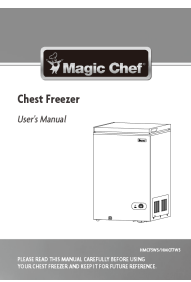

- **UPC:** 711906781275

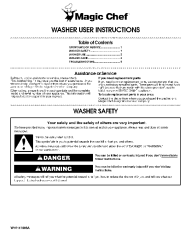
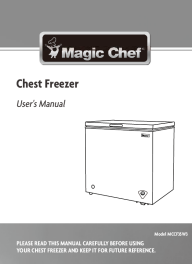
9. WARRANTY AND SUPPORT

For detailed warranty information, please refer to the warranty card included with your original purchase or visit the official Magic Chef website. Keep your proof of purchase, such as a receipt, for any warranty claims.

If you require technical assistance, have questions about your breadmaker, or need to order replacement parts, please contact Magic Chef customer service. Contact details can typically be found on the manufacturer's website or in your product registration materials.

Related Documents - ES1850

 <p>The cover of the Magic Chef Dishwasher Installation Manual features the Magic Chef logo at the top. Below it, the title 'Dishwasher Installation Manual' is displayed. At the bottom, there is a red banner with white text that reads: 'PLEASE READ THIS MANUAL CAREFULLY BEFORE USING YOUR DISHWASHER AND KEEP IT FOR FUTURE REFERENCE.'</p>	<p>Magic Chef Dishwasher Installation Manual</p> <p>This installation manual provides detailed instructions for installing Magic Chef dishwashers, including safety precautions, specifications, parts lists, and step-by-step guidance for electrical preparation, mounting, leveling, water supply connection, drain hose connection, and toe kick installation. It also includes an installer checklist and troubleshooting tips.</p>
 <p>The cover of the Magic Chef Microwave Oven Use and Care Manual shows the Magic Chef logo and the title 'Microwave Oven Use and Care Manual'. It features a collage of images related to microwave cooking and the brand name 'Magic Chef' repeated in various fonts and sizes.</p>	<p>Magic Chef Microwave Oven Use and Care Manual (MCO160UWF, MCO160UBF, MCO160SF, MCO160UQF)</p> <p>This comprehensive manual provides detailed instructions for the Magic Chef Microwave Oven models MCO160UWF, MCO160UBF, MCO160SF, and MCO160UQF. It covers safety precautions, installation, operation, features, maintenance, and troubleshooting.</p>
 <p>The cover of the Magic Chef Chest Freezer User's Manual displays the Magic Chef logo and the title 'Chest Freezer User's Manual'. It includes an image of a white chest freezer and a red banner at the bottom with the text: 'PLEASE READ THIS MANUAL CAREFULLY BEFORE USING YOUR CHEST FREEZER AND KEEP IT FOR FUTURE REFERENCE.'</p>	<p>Magic Chef Chest Freezer User Manual HMCF5W5 HMCF7W5</p> <p>User's manual for the Magic Chef HMCF5W5 and HMCF7W5 chest freezers, covering safety instructions, installation, operation, maintenance, troubleshooting, and warranty information.</p>
 <p>The cover of the Magic Chef 1.1 Cu.Ft. Countertop Microwave Oven User's Manual shows the Magic Chef logo and the title '1.1 Cu.Ft. Countertop Microwave Oven User's Manual'. It features an image of the microwave oven and a red banner at the bottom with the text: 'PLEASE READ THIS MANUAL CAREFULLY BEFORE USING YOUR COUNTERTOP MICROWAVE OVEN AND KEEP IT FOR FUTURE REFERENCE.'</p>	<p>Magic Chef 1.1 Cu.Ft. Countertop Microwave Oven User's Manual</p> <p>This user manual provides essential information for the Magic Chef 1.1 Cu.Ft. Countertop Microwave Oven (Models MC110MW/MC110MB), covering safety, installation, operation, care, and warranty.</p>

 The image shows the cover page of the Magic Chef Washer User Instructions. It features the Magic Chef logo at the top, followed by the title 'WASHER USER INSTRUCTIONS'. Below this, there is a 'Model Number' field and a 'Serial Number' field. A 'WARRANTY' section is visible, stating '1 Year Limited Warranty'. A 'SAFETY' section with a warning icon is also present. The bottom of the page has the text 'PLEASE READ THIS MANUAL CAREFULLY BEFORE USING YOUR CHEST FREEZER AND KEEP IT FOR FUTURE REFERENCE.'	<p>Magic Chef Washer User Instructions</p> <p>User instructions and safety guide for Magic Chef washers, covering operation, care, and troubleshooting tips to ensure optimal performance and longevity.</p>
 The image shows the cover page of the Magic Chef MCCF35W3 Chest Freezer User Manual and Safety Guide. It features the Magic Chef logo at the top, followed by the title 'Chest Freezer User's Manual'. Below this, there is a line drawing of the chest freezer. The bottom of the page has the text 'PLEASE READ THIS MANUAL CAREFULLY BEFORE USING YOUR CHEST FREEZER AND KEEP IT FOR FUTURE REFERENCE.'	<p>Magic Chef MCCF35W3 Chest Freezer User Manual and Safety Guide</p> <p>Comprehensive user manual for the Magic Chef MCCF35W3 Chest Freezer, covering installation, operation, maintenance, troubleshooting, and warranty information.</p>