

Wacker Neuson RT820

Wacker Neuson RT820 Voltage Regulator Instruction Manual

Model: RT820 | Part Number: 0111899

1. INTRODUCTION

This manual provides essential instructions for the proper installation, operation, and maintenance of the Wacker Neuson RT820 Voltage Regulator (Part Number 0111899). This component is designed for use with Wacker Neuson RT560 Trench Rollers. Adherence to these instructions is crucial for ensuring optimal performance, safety, and longevity of the voltage regulator and associated equipment.

2. SAFETY INFORMATION

Always observe general safety precautions when working with electrical components and heavy machinery.

- Disconnect power before installation or maintenance.
- Ensure proper grounding.
- Consult a qualified technician if unsure about any procedure.
- Wear appropriate personal protective equipment (PPE).

3. PRODUCT OVERVIEW

The Wacker Neuson RT820 Voltage Regulator is a critical electrical component responsible for maintaining a stable output voltage in the RT560 Trench Roller's electrical system. It converts alternating current (AC) generated by the alternator into direct current (DC) and regulates the voltage to protect electrical components and ensure proper battery charging.



Image: The Wacker Neuson RT820 Voltage Regulator, shown here in its protective clear plastic packaging. The regulator unit is a metallic, rectangular component with a black heat sink on top, connected to a multi-colored wiring harness terminating in a gray connector.

4. INSTALLATION

1. **Preparation:** Ensure the RT560 Trench Roller is turned off and the battery is disconnected.
2. **Locate Old Regulator:** Identify the existing voltage regulator on the RT560 Trench Roller. Refer to the trench roller's service manual for exact location.
3. **Disconnect Wiring:** Carefully disconnect the wiring harness from the old regulator. Note the orientation and connection points if not clearly marked.
4. **Remove Old Regulator:** Unbolt and remove the old voltage regulator from its mounting bracket.
5. **Mount New Regulator:** Position the new Wacker Neuson RT820 Voltage Regulator (Part Number 0111899) onto the mounting bracket. Secure it with appropriate fasteners, ensuring a firm and stable attachment.
6. **Connect Wiring:** Connect the wiring harness to the new regulator. Ensure all connections are secure and correctly matched according to the trench roller's wiring diagram.
7. **Reconnect Battery:** Reconnect the battery terminals, ensuring correct polarity.
8. **Initial Check:** Before starting the engine, perform a visual inspection of all connections.

5. OPERATION

Once installed, the voltage regulator operates automatically as part of the trench roller's electrical system.

- **Engine Start:** Start the RT560 Trench Roller engine as per its operational manual.
- **Voltage Monitoring:** The regulator will automatically manage the charging voltage to the battery and the electrical system. Monitor the battery voltage gauge on the trench roller's dashboard to ensure it is within the normal operating range (typically 13.5V to 14.5V when the engine is running).
- **Normal Function:** A properly functioning regulator ensures consistent power supply to all electrical components and prevents overcharging or undercharging of the battery.

6. MAINTENANCE

The Wacker Neuson RT820 Voltage Regulator is designed for durability and typically requires minimal maintenance.

- **Regular Inspection:** Periodically inspect the regulator and its wiring for signs of corrosion, loose connections, or physical damage.
- **Cleaning:** Keep the regulator free from dirt, dust, and debris. Use a clean, dry cloth to wipe the

exterior. Do not use solvents or abrasive cleaners.

- **Heat Dissipation:** Ensure the area around the regulator is clear to allow for proper heat dissipation. Blocked airflow can lead to overheating and premature failure.

7. TROUBLESHOOTING

If you experience electrical issues with your RT560 Trench Roller after installing or during operation of the voltage regulator, consider the following:

Symptom	Possible Cause	Solution
Battery not charging	Faulty regulator, loose connections, faulty alternator	Check wiring, test regulator, test alternator.
Battery overcharging (high voltage)	Faulty regulator	Replace regulator.
Intermittent electrical issues	Loose connections, corroded terminals	Inspect and clean all electrical connections.
No power to electrical components	Blown fuse, faulty wiring, complete regulator failure	Check fuses, inspect wiring, test regulator.

If troubleshooting steps do not resolve the issue, consult a qualified Wacker Neuson service technician.

8. SPECIFICATIONS

- **Part Number:** 0111899
- **Model Compatibility:** Wacker Neuson RT560 Trench Rollers
- **Function:** Voltage Regulation, AC to DC Conversion
- **Weight:** Approximately 0.01 ounces
- **Manufacturer:** Wacker Neuson

9. WARRANTY INFORMATION

For specific warranty details regarding the Wacker Neuson RT820 Voltage Regulator (Part Number 0111899), please refer to the official warranty documentation provided with your Wacker Neuson equipment or contact Wacker Neuson customer support directly. Warranty terms typically cover manufacturing defects for a specified period from the date of purchase.







10. SUPPORT AND CONTACT

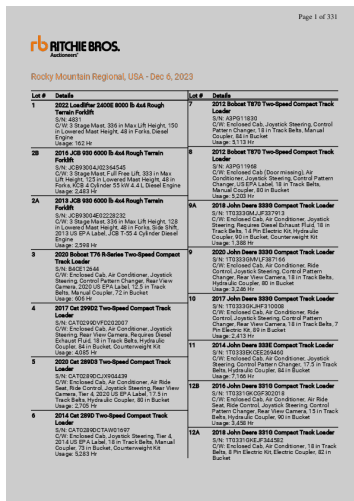
For technical assistance, replacement parts, or further information, please contact Wacker Neuson customer support or visit their official website.

Wacker Neuson Official Website: www.wackerneuson.com

Customer Service: Consult your regional Wacker Neuson dealer for local support contact information.

Related Documents - RT820

<div><div>Operator's Manual</div><div>Trench Roller</div><div>RT 56SC-2</div><div>RT 82SC-2</div><div></div></div>	<p>Wacker Neuson RT 56SC-2 and RT 82SC-2 Trench Roller Operator's Manual</p> <p>Comprehensive operator's manual for Wacker Neuson RT 56SC-2 and RT 82SC-2 Trench Rollers. Covers safe operation, maintenance procedures, technical specifications, safety warnings, and troubleshooting for construction professionals.</p>
<div><div>Operator's Manual</div><div>Track excavator</div><div>1404</div><div></div><div>WACKER NEUSON</div></div>	<p>Wacker Neuson 1404 Track Excavator Operator's Manual</p> <p>Official operator's manual for the Wacker Neuson 1404 track excavator, detailing safe operation, maintenance, and technical specifications for optimal performance and longevity.</p>
<div><div>Operator's manual</div><div>Drive motor M1500, M2500</div><div>for modular internal vibrator HMS</div><div></div></div>	<p>Wacker Neuson Drive Motor M1500, M2500 Operator's Manual</p> <p>This operator's manual provides comprehensive guidance for the Wacker Neuson Drive Motors M1500 and M2500, designed for use with the modular internal vibrator HMS system. It details essential procedures for safe operation, setup, maintenance, and troubleshooting to ensure optimal performance and longevity of the equipment.</p>
<div><div>Operator's Manual</div><div>Vibroplate</div><div>VPY70</div><div></div></div>	<p>Wacker Neuson VPY70 Vibroplate Operator's Manual</p> <p>Comprehensive operator's manual for the Wacker Neuson VPY70 Vibroplate, covering safety, operation, maintenance, troubleshooting, and technical specifications.</p>
<div><div>WACKER NEUSON</div><div>Ersetzteilekatalog</div><div>Spare parts catalog</div><div>Catalogue de pièces de rechange</div><div>Catálogo de piezas de recambio</div><div>Generator</div><div>Power</div><div>Energy</div><div>Potencia</div><div>G120</div><div></div></div>	<p>Wacker Neuson G120 Generator Spare Parts Catalog</p> <p>Comprehensive spare parts catalog for the Wacker Neuson G120 generator, detailing part identification, conversion tables, and component breakdowns for maintenance and service.</p>
<div><div>Operator's Manual</div><div>Mobile Generator</div><div>G100</div><div>G120</div><div></div></div>	<p>Wacker Neuson G100/G120 Mobile Generator Operator's Manual</p> <p>This operator's manual provides essential information for the safe and effective operation, maintenance, and troubleshooting of Wacker Neuson G100 and G120 mobile generators. It covers safety guidelines, setup, operation, controller functions, and technical data.</p>



012345313658249 2 4 2534 RAMMER MAINTENANCE KITS Material number
5100048617 5000129621 500020 ... ENCH ROLLERS MAINTENANCE KITS

lang:en score:16 filesize: 367.82 K page_count: 10 document date: 2021-09-01

[\[pdf\]](#) User Manual Catalog Label

RB Auction Event export 8 feb 2024 — Manual Coupler 72 in Bucket Usage 606 Hr 4 2017 Ford 675D

4x4 Backhoe Loader S N AB28414 C W XLT Crawler Dozer 1T0650KKEJF329475 Catalog Rocky Mountain Regional USA 2023180 assets ctfassets net ueyxw0p8lpyv 5B176729 860B 43BF A55D 1513CE5703DD f066e388378d8c9e5a335e18612d6ed3 |||

Page 1 of 331 Rocky Mountain Regional, USA - Dec 6, 2023 Lot # 1 2B 2A 3 4 5 6

Details 2022 Loadl ... tation, 2015 US EPA Label, Aperture Tires, Manual Coupler, 36
in Bucket Usage: 1,628 Hr 1995 Wacker **RT820** Trench Compactor Inoperable S/N:
717201089 C/W: 32 in Drums, Remote Control w/ Cord, Articul...

lang:de score:11 filesize: 1.01 M page count: 331 document date: 2024-02-08

[\[pdf\]](#) Confidentiality Request Letter

RB Auction Event Export 13 feb 2024 — Manual Transmission 10000 lb Front Axle 19000 Rears 25950

GVWR 2000 IMT 3820 7500 3 Section Hydraulic Crane Miller Wildcat 200 6500 W Catalog Rocky Mountain Regional USA 2023180 assets ctfassets net ueyxw0p8lpyv 5B176729 860B 43BF A55D 1513CE5703DD d42c066d86c776f47bb784779e6dd449 |||

Page 1 of 251 Rocky Mountain Regional, USA - Dec 6, 2023 Lot # 1 2B 2A 3 4 5 6

Details 2022 Loadl ... tation, 2015 US EPA Label, Aperture Tires, Manual Coupler, 36 in Bucket Usage: 1,628 Hr 1995 Wacker **RT820** Trench Compactor Inoperable S/N: 717201089 C/W: 32 in Drums, Remote Control w/ Cord, Articul...

lang:de score:11 filesize: 954.45 K page_count: 251 document date: 2024-02-13

