

## Cornat SPK1300

# Cornat Halios SPK1300 Toilet Cistern

## INSTALLATION AND OPERATION MANUAL

### 1. INTRODUCTION

This manual provides detailed instructions for the installation, operation, and maintenance of the Cornat Halios SPK1300 surface-mounted toilet cistern. Designed for use with WC combinations, this cistern features a dual-flush system for water efficiency and is constructed from durable plastic with full insulation. Please read these instructions carefully before installation and retain them for future reference.



*Image 1: Front view of the Cornat Halios SPK1300 Toilet Cistern.*

### 2. PRODUCT FEATURES

- **Dual-Flush Mechanism:** Offers flush volumes of 3-4.5 liters and 6-9 liters for water conservation.
- **Durable Construction:** Made from high-quality plastic for longevity.
- **Full Insulation:** Reduces noise during filling and prevents condensation.

- **Certified Filling Valve:** Equipped with a DIN/KIWA certified filling valve for reliable performance.
- **Flexible Connection:** Supports two-sided water inlet connection.
- **Complete Kit:** Includes chrome-plated copper tube (Ø 10 mm) and all necessary internal fittings.
- **Standard Compliant:** Manufactured according to DIN EN 14055 standard.

### 3. PACKAGE CONTENTS

---

Please verify that all components are present before beginning installation:

- Cornat Halios SPK1300 Toilet Cistern body
- Cistern lid with dual-flush buttons
- Internal flushing mechanism and filling valve assembly
- Chrome-plated copper tube (Ø 10 mm)
- Mounting accessories (screws, washers, seals)
- Connection accessories



*Image 2: Packaging of the Cornat Halios SPK1300 Toilet Cistern, showing product details.*

### 4. SAFETY INFORMATION

---

To ensure safe installation and operation, please observe the following safety guidelines:

- Always shut off the main water supply before commencing any installation, maintenance, or repair work.
- Wear appropriate personal protective equipment, such as gloves and eye protection, during installation.
- Ensure all connections are securely tightened to prevent leaks, but avoid overtightening plastic components to prevent damage.
- Keep all small parts and packaging materials out of reach of children to prevent choking hazards.
- If you are uncertain about any step of the installation process, it is recommended to consult a qualified

plumber.

## 5. SETUP AND INSTALLATION

Follow these steps for proper installation of your Cornat Halios SPK1300 toilet cistern:

1. **Preparation:** Turn off the main water supply to the toilet. Flush the toilet to empty any remaining water from the existing cistern. If replacing an old cistern, disconnect and remove it carefully.
2. **Mounting the Cistern:** Position the new Cornat Halios SPK1300 cistern onto the toilet bowl. Utilize the provided mounting screws and seals to secure the cistern firmly. The mounting screw spacing is adjustable, accommodating distances up to a maximum of 25 cm. Ensure the cistern is level and stable.
3. **Water Connection:** Connect the water supply line to the cistern's filling valve. The cistern is designed for two-sided connection. Use the supplied chrome-plated copper tube ( $\varnothing$  10 mm) and ensure all seals are correctly seated to prevent leaks. Hand-tighten connections initially, then use a wrench for a final snug fit, taking care not to overtighten.
4. **Internal Fittings Check:** Verify that the internal flush mechanism and fill valve are correctly seated and secured as per the provided diagram.
5. **Initial Water Fill:** Slowly turn on the main water supply. Carefully check for any leaks around all connections and the base of the cistern. Allow the cistern to fill completely; the fill valve will automatically shut off when the water level reaches the preset point.

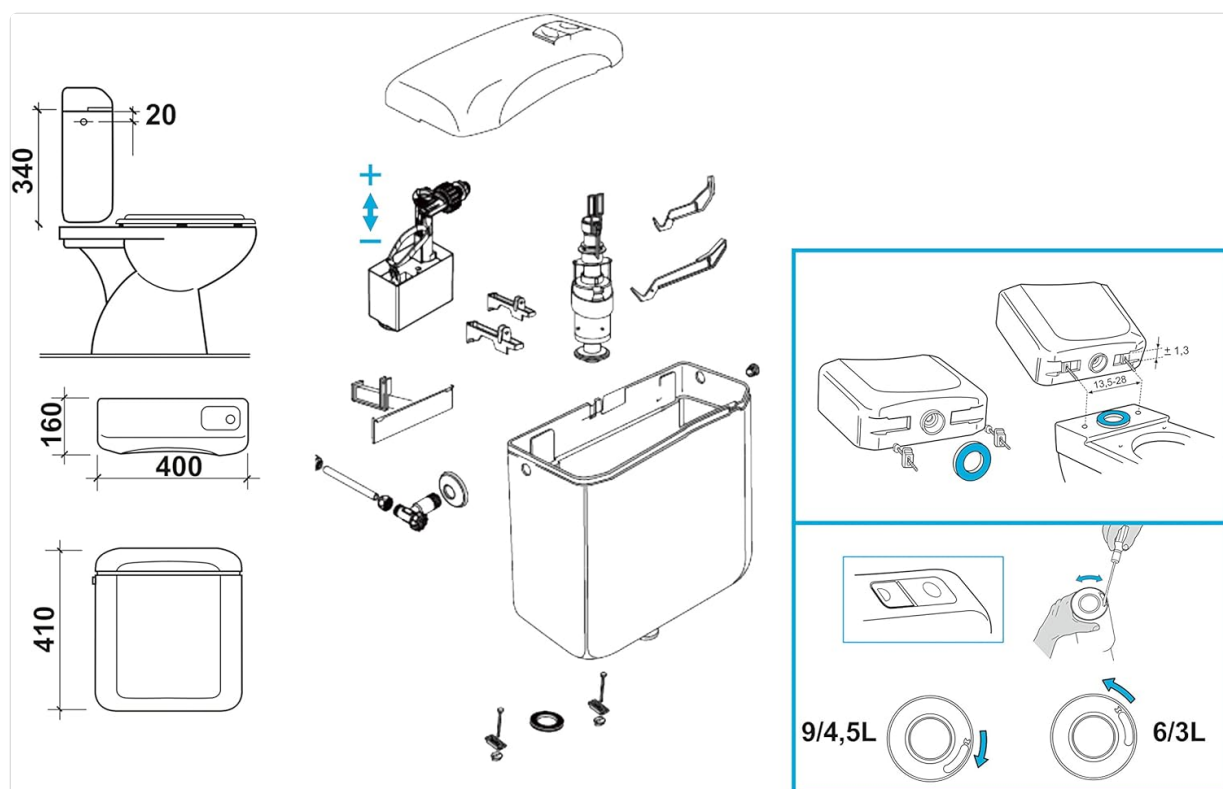


Image 3: Technical diagram illustrating cistern dimensions, an exploded view of internal components, and flush volume adjustment mechanism.

## 6. OPERATING INSTRUCTIONS

The Cornat Halios SPK1300 features a dual-flush system designed for efficient water usage:

- **Small Flush (3-4.5 liters):** Press the smaller button located on the top of the cistern lid for a reduced flush volume, ideal for liquid waste.
- **Large Flush (6-9 liters):** Press the larger button for a full flush volume, suitable for solid waste.

**Adjusting Flush Volume:** The flush volume can be adjusted internally. Refer to the lower right inset of Image 3 for visual guidance on how to adjust the mechanism between the 9/4.5L and 6/3L settings. This adjustment typically involves rotating a specific component within the flush valve assembly.

## 7. MAINTENANCE

---

Regular maintenance ensures the longevity and optimal performance of your cistern:

- **Exterior Cleaning:** Clean the exterior surfaces of the cistern with a soft cloth and a mild, non-abrasive cleaning solution. Avoid using harsh chemicals or abrasive scrubbers that could damage the plastic finish.
- **Internal Inspection:** Periodically inspect the inside of the cistern for any mineral buildup, sediment, or debris. If necessary, turn off the water supply, drain the cistern, and carefully clean the internal components.
- **Seal Check:** Regularly examine all seals and connections for signs of wear, cracking, or leaks. Replace any worn or damaged seals promptly to prevent water wastage and potential water damage.
- **Fill Valve Maintenance:** If the cistern fills slowly or water continuously runs, the fill valve may require cleaning or adjustment. Consult the manufacturer's guidelines or seek professional assistance if the issue persists.

## 8. TROUBLESHOOTING

---

Here are solutions to common issues you might encounter:

- **Water continuously runs into the toilet bowl:**
  - Check the flush valve seal for debris or wear. Clean or replace the seal if necessary.
  - Ensure the flush chain or rod is not too tight, which could prevent the flush valve from fully closing.
- **Cistern does not fill or fills slowly:**
  - Verify that the water supply valve to the cistern is fully open.
  - Inspect the fill valve for any blockages or mineral buildup. Clean or replace the fill valve if it is obstructed or faulty.
- **Leaks around the cistern base or connections:**
  - Immediately turn off the water supply.
  - Check all connections for tightness.
  - Inspect all seals (between the cistern and toilet, and at the water inlet) for proper seating and any signs of damage. Replace any damaged seals.
- **Flush buttons are stiff or unresponsive:**
  - Ensure the cistern lid is correctly seated and not obstructing the buttons.
  - Check the mechanism connecting the buttons to the flush valve for any obstructions or misalignment.

## 9. SPECIFICATIONS

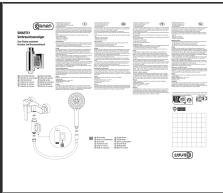
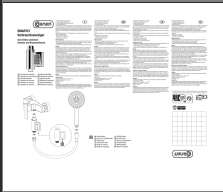
### Product Specifications

Feature	Detail
Brand	Cornat
Model Number	SPK1300
Material	Plastic
Color	White
Flush Volume	3-4.5 Liters / 6-9 Liters (Dual Flush)
Approximate Dimensions (L x W x H)	44 x 42 x 18.5 cm (based on package dimensions)
Weight	3.2 kg
Connection Type	Two-sided connection option
Standard Compliance	DIN EN 14055

## 10. WARRANTY AND SUPPORT

Specific warranty details for the Cornat Halios SPK1300 toilet cistern are not provided within this manual. For information regarding warranty claims, technical support, or to inquire about replacement parts, please refer to the product packaging or contact Cornat customer service directly. Contact information can typically be found on the manufacturer's website or on the product's original packaging.

### Related Documents - SPK1300

	<p><a href="#">SMARTLY Water Consumption Indicator: Features, Installation, and Specifications</a></p> <p>Learn how to use the SMARTLY water consumption indicator to monitor your shower's water temperature, flow rate, and total usage. Includes installation guide, safety instructions, and technical specifications.</p>
	<p><a href="#">SMARTLY Water Consumption Indicator: Features, Installation, and Specifications</a></p> <p>Learn how to use the SMARTLY water consumption indicator to monitor your shower's water temperature, flow rate, and total usage. Includes installation guide, safety instructions, and technical specifications.</p>

