



Manuals.plus /

› Lippert Components /

› Lippert Components Tread Lite RV Power Steps - 24" Double Electric Foldout Step Configuration with LED Lighting, 8.5" Rise and Depth, Anti-Slip Coated Stepping Surface, Automatically Retracts - 353543 24 Inch

## Lippert Components 353543

# User Manual

## LIPPERT COMPONENTS TREAD LITE RV POWER STEPS - 24" DOUBLE ELECTRIC FOLDOUT STEP CONFIGURATION

Model: 353543

### 1. Introduction

---

The Lippert Components Tread Lite RV Power Steps are designed to enhance accessibility and convenience for your recreational vehicle. These electric steps automatically extend and retract, providing a stable and illuminated entry and exit point for your RV.

Key features include:

- **Automatic Operation:** Steps extend and retract in sync with your RV's entry door movements.
- **Integrated LED Lighting:** Illuminates the steps for safe use during night-time.
- **Efficient Mechanics:** Designed for swift extension and retraction.
- **Durable Construction:** Crafted from anodized aluminum links and robust step treads for longevity.
- **Safety Features:** Includes obstruction-sensing technology and automatic retraction when the engine is on.



Image: The Lippert Tread Lite RV Power Steps in a 24-inch double electric foldout configuration, showcasing the robust design and integrated motor housing.

## 2. Safety Information

---

Please read and understand all safety instructions before installing or operating the Tread Lite RV Power Steps. Failure to follow these instructions could result in serious injury or property damage.

- Always ensure the area around the steps is clear before extending or retracting them.
- Do not stand on the steps while they are in motion.
- Keep hands and feet clear of moving parts.
- Ensure all mounting hardware is securely fastened before use.
- Do not exceed the maximum weight capacity of the steps (refer to specifications).
- This product may expose you to chemicals known to the State of California to cause cancer and birth defects or other reproductive harm. For more information, visit [www.P65Warnings.ca.gov](http://www.P65Warnings.ca.gov).

## 3. What's in the Box

---

The Tread Lite RV Power Steps package includes the following components:

- Step Assembly (1)
- Switch (1)
- Wiring Harness (1)
- Necessary Mounting Hardware

## 4. Setup and Installation

---

Installation of the Tread Lite RV Power Steps is designed to be a straightforward bolt-on process. It is recommended to have basic mechanical knowledge and tools for installation. If you are unsure about any step, consult a qualified RV technician.

### 4.1 Pre-Installation Checklist

- Verify all components listed in "What's in the Box" are present.
- Ensure your RV's power system is disconnected before beginning electrical work.
- Identify the appropriate mounting location on your RV chassis.

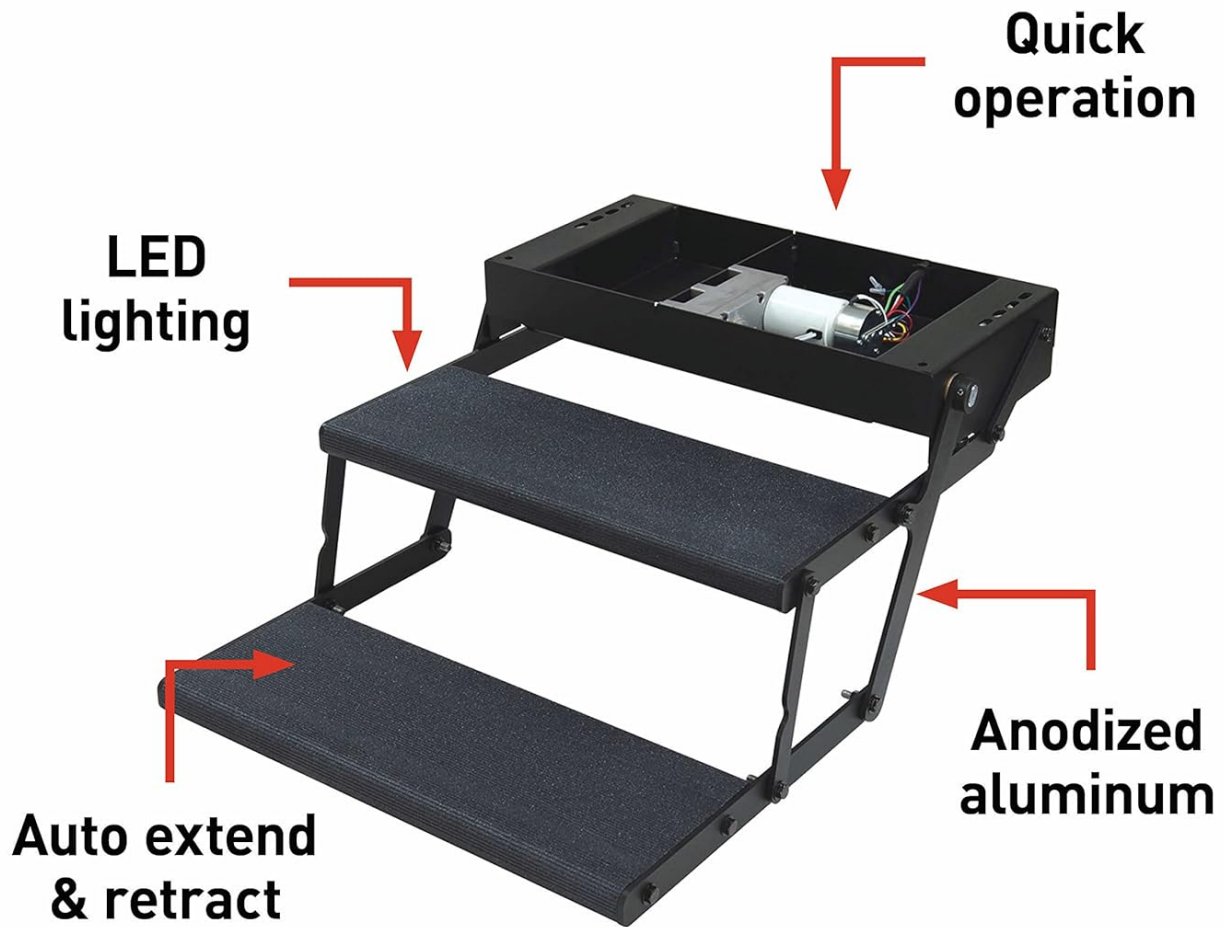
### 4.2 Mounting the Step Assembly

1. Position the step assembly against the RV frame at the desired entry point.
2. Mark the drilling locations for the mounting hardware.
3. Drill pilot holes as necessary, ensuring not to damage any existing wiring or plumbing.
4. Securely fasten the step assembly to the RV frame using the provided mounting hardware. Ensure all bolts are torqued to manufacturer specifications (refer to detailed installation guide if provided separately).

### 4.3 Wiring Connection

1. Connect the wiring harness to the step assembly motor.
2. Route the wiring harness to the RV's power source and the included switch location.
3. Connect the switch according to the wiring diagram (refer to detailed installation guide). This switch controls the "hold cycle" feature.
4. Connect the power and ground wires to the RV's 12V DC system, ensuring proper polarity and fusing.
5. Connect the door sensor wire to the RV's entry door switch, which triggers the automatic extension/retraction.
6. Reconnect the RV's power system and test the step operation.

# FEATURES & BENEFITS



Available in single or double configurations and 24" or 30" sizes



Image: Diagram highlighting key features such as quick operation, LED lighting, auto extend & retract, and anodized aluminum construction.

## 5. Operating Instructions

### 5.1 Automatic Extension and Retraction

The Tread Lite RV Power Steps are designed for automatic operation. When the RV's entry door is opened, the steps will automatically extend. When the entry door is closed, the steps will automatically retract.

# AUTOMATION

Tread Lite RV steps take the hassle out of setup; they effortlessly extend and retract in sync with your RV's entry door movements



Representative Image

Image: Two individuals demonstrating the automatic extension of the RV steps as they enter and exit the recreational vehicle.

## 5.2 LED Lighting

The integrated LED lights activate automatically when the steps extend, providing illumination for safe entry and exit, especially in low-light conditions.

# NIGHT OPERATION

Integrated LED lights activate automatically as the steps extend



Image: Close-up view of the RV steps, illustrating the integrated LED lights that illuminate the stepping surface for night operation.

## 5.3 Hold Cycle Switch

A hold cycle switch is included, allowing you to keep the steps extended even when the RV door is closed. This feature is useful when parked at a campsite and you desire the steps to remain deployed for continuous access.

## 5.4 Obstruction Sensing Technology

The Tread Lite steps are equipped with obstruction-sensing technology. If an obstruction is detected during extension or retraction, the steps will automatically retract to prevent damage to the steps or the obstruction.

## 5.5 Engine On Auto-Retract

For safety and to prevent damage during travel, the steps will automatically retract when the RV's engine is turned on, regardless of the door position or hold cycle switch setting.

## 6. Maintenance

Regular maintenance will ensure the longevity and optimal performance of your Tread Lite RV Power Steps. The steps

are constructed with anodized aluminum links and robust step treads for durability.

# DURABILITY

Crafted from anodized aluminum links and robust step treads



 **LIPPERT™**

Image: A close-up view emphasizing the durable construction of the steps, featuring anodized aluminum links and textured step treads.

- **Cleaning:** Clean the steps regularly with mild soap and water. Avoid abrasive cleaners that could damage the finish.
- **Lubrication:** Periodically lubricate all pivot points and moving parts with a silicone-based lubricant to ensure smooth operation.
- **Inspection:** Regularly inspect all mounting hardware for tightness. Check the wiring harness for any signs of wear, fraying, or damage. Ensure the step treads are free from debris that could impede operation or cause slipping.
- **Motor Care:** Keep the motor housing clean and free from excessive dirt or moisture.

## 7. Troubleshooting

If you encounter issues with your Tread Lite RV Power Steps, refer to the following common troubleshooting steps:

Problem	Possible Cause	Solution
Steps do not extend or retract.	No power, loose wiring, faulty switch, motor issue.	Check RV's 12V power supply. Inspect all wiring connections for tightness and corrosion. Test the hold cycle switch. If issues persist, consult a technician.
Steps extend but do not retract.	Door sensor issue, obstruction, faulty motor.	Ensure the door sensor is functioning correctly. Check for any obstructions preventing retraction.
LED lights are not working.	Loose connection, faulty LED, power issue.	Check wiring to the LED lights. Ensure the steps are fully extended to trigger the lights.
Steps are noisy or operate slowly.	Lack of lubrication, debris in mechanism.	Clean and lubricate all pivot points and moving parts. Remove any debris from the mechanism.

If these steps do not resolve the issue, please contact Lippert Components customer support.

## 8. Specifications

Attribute	Detail
Model Number	353543
Brand	Lippert Components
Material	Aluminum
Color	Black
Product Dimensions	18.25"W x 7.25"H (Note: This appears to be the mounting bracket dimensions, not the step width. The product title indicates 24" width.)
Maximum Height (Step Width)	24 Inches (as per product title)
Item Weight	53.8 Pounds
Number of Steps	2 (Double Configuration)
Special Feature	Durable, LED Lighting, Automatic Operation, Obstruction Sensing
UPC	848150022387

# MULTIPLE SIZES

Choose from single or double configurations and 24" or 30" sizes to match your RV's specifications

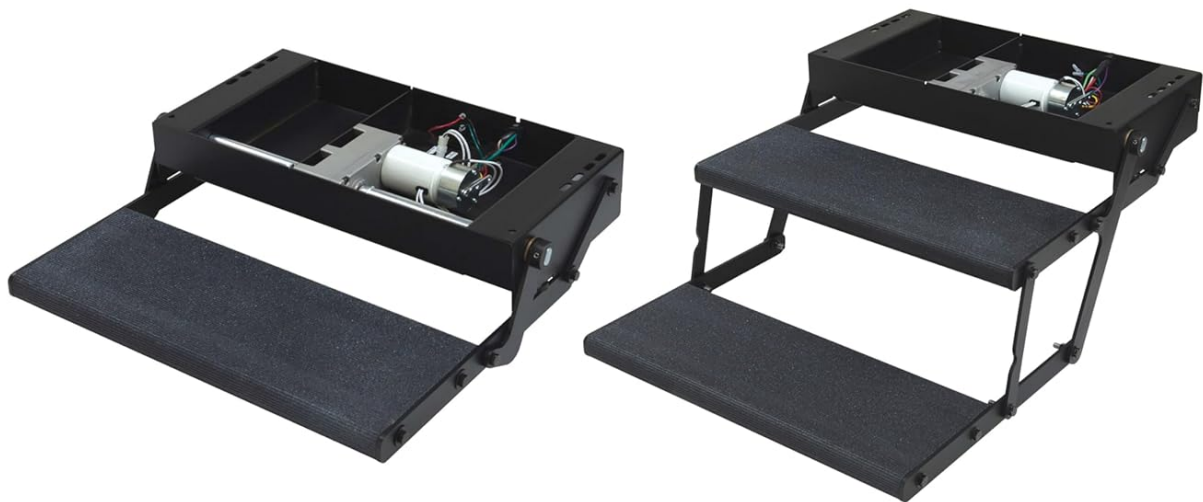


Image: Illustration showing the availability of Tread Lite RV Power Steps in both single and double configurations, and various sizes.

## 9. Warranty and Support

Lippert Components stands behind the quality of its products. For specific warranty details, including coverage period and terms, please refer to the warranty documentation included with your product or visit the official Lippert Components website.

For technical assistance, troubleshooting not covered in this manual, or to inquire about replacement parts, please contact Lippert Components Customer Support:

- **Online Support:** Visit the Lippert Components website for FAQs and support resources.
- **Phone Support:** Refer to the contact information provided on the Lippert Components website or product packaging.

When contacting support, please have your product model number (353543) and purchase information readily available.

