

Wondfo B00RY8UBNC

Wondfo 50 Ovulation Test Strips and 20 Pregnancy Test Strips Kit - Instruction Manual

Model: B00RY8UBNC

1. INTRODUCTION

This manual provides detailed instructions for using the Wondfo 50 Ovulation Test Strips and 20 Pregnancy Test Strips Kit. These tests are designed for home self-checking to help identify your fertile window and detect pregnancy.

2. KIT CONTENTS

Each Wondfo Fertility Combination Test Kit (Model B00RY8UBNC) typically includes:

- 50 x Wondfo Ovulation Test Strips (individually sealed)
- 20 x Wondfo Pregnancy Test Strips (individually sealed)
- 1 x Instruction Leaflet (this manual)



Image: The Wondfo Fertility Combination Test Kit box, showing the quantity of ovulation and pregnancy test strips included.

3. HOW THE TESTS WORK

3.1. Ovulation (LH) Test Strips

The Wondfo Ovulation Test Strip detects the surge of Luteinizing Hormone (LH) in your urine. An LH surge typically indicates that ovulation will occur within the next 24-48 hours, marking your most fertile period.

These strips are highly sensitive, detecting LH levels as low as 25 mIU/ml.

Easy To Read

Ovulation

Pregnancy



**LH Surge
(POSITIVE)**



**Pregnant
(POSITIVE)**



**No LH Surge
(NEGATIVE)**



**Not Pregnant
(NEGATIVE)**



INVALID



INVALID

If test result is INVALID, make sure to test again with a new strip

Image: A visual representation of how the Wondfo Ovulation Test Strip detects an LH surge.

3.2. Pregnancy (HCG) Test Strips

The Wondfo Pregnancy Test Strip detects the presence of Human Chorionic Gonadotropin (HCG) in your urine. HCG is produced shortly after a fertilized egg attaches to the wall of the uterus. The level of HCG increases rapidly in early pregnancy.

These strips are highly sensitive, detecting HCG levels as low as 25 mIU/ml, allowing for early detection.



Image: A visual representation of how the Wondfo Pregnancy Test Strip detects HCG.

4. WHEN TO TEST

4.1. Ovulation Testing

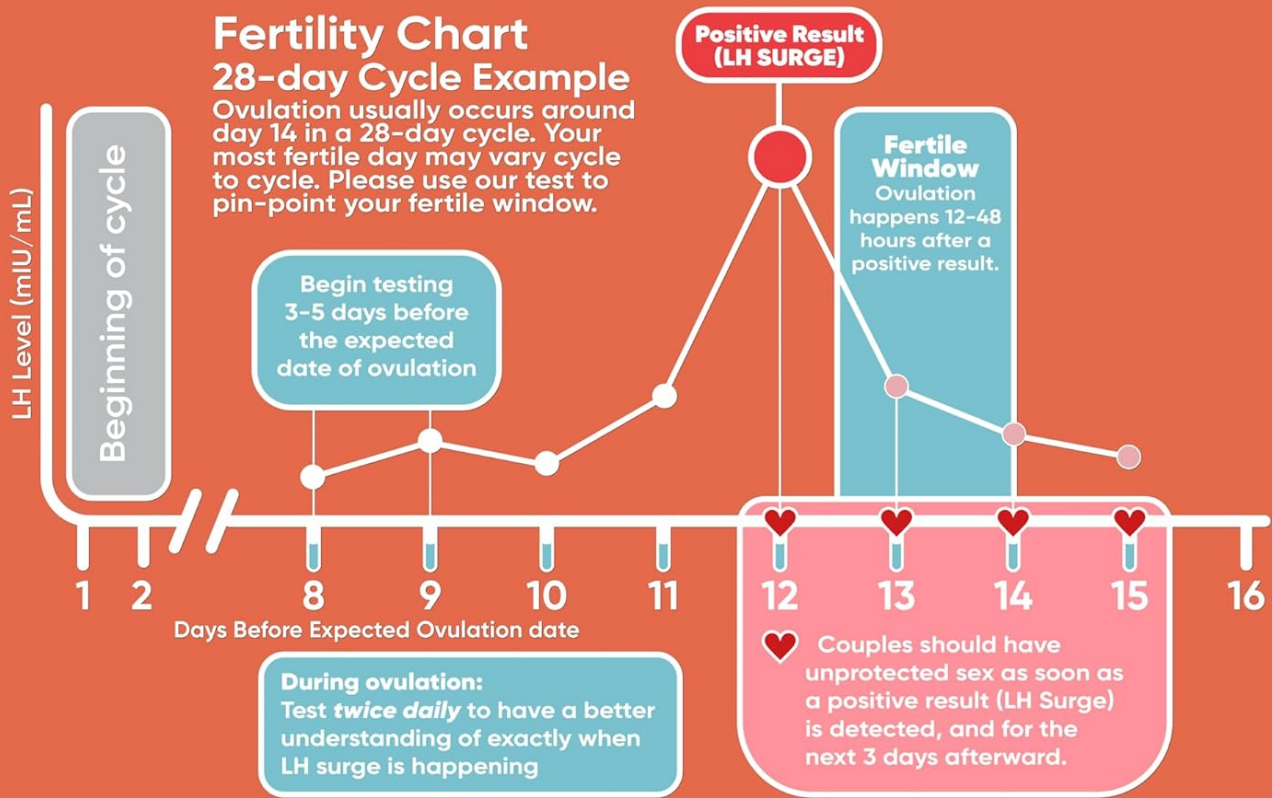
To determine your fertile window, begin testing 3-5 days before your expected ovulation date. Ovulation typically occurs around day 14 of a 28-day cycle, but this can vary. For cycles shorter than 21 days or longer than 38 days, consult a physician.

The best time to test for LH is between 11:00 AM and 10:00 PM. Do not use first-morning urine for LH testing as LH does not appear in urine until later in the day. Reduce fluid intake for about 2 hours before testing.



Fertility Chart 28-day Cycle Example

Ovulation usually occurs around day 14 in a 28-day cycle. Your most fertile day may vary cycle to cycle. Please use our test to pin-point your fertile window.



Know Your Pattern

Conceive With Confidence!

Image: A fertility chart illustrating LH levels and the fertile window during a typical 28-day menstrual cycle.

4.2. Pregnancy Testing

The Wondfo Pregnancy Test can detect HCG around 4 days before your expected period, or even earlier. For optimal results, it is recommended to use first-morning urine, as the concentration of HCG is highest right after you wake up.



Pregnancy Chart



99% Accuracy

Results in only 5min

Image: A pregnancy chart demonstrating the rise of HCG concentration relative to ovulation and the expected period.

5. HOW TO PERFORM THE TEST

Follow these steps for both ovulation and pregnancy tests:

1. **Collect Urine:** Collect a urine sample in a clean, dry container.
2. **Prepare Test Strip:** Remove the test strip from its sealed pouch just before use.
3. **Dip the Strip:** Immerse the strip into the urine sample with the arrow pointing towards the urine. Do not immerse past the MAX line.
4. **Wait:** Keep the strip in the urine for at least 5 seconds.
5. **Lay Flat:** Take the strip out and lay it flat on a clean, dry, non-absorbent surface.
6. **Read Results:** Read the results in 3-5 minutes. Do not read results after 5 minutes, as they may become inaccurate.

Highly Sensitive



Detects hCG/ LH levels as low as 25 mIU/ml

Image: A step-by-step illustration demonstrating how to use the Wondfo test strips.

Your browser does not support the video tag.

Video: A demonstration of how to use Wondfo Pregnancy Test Strips. This video is provided by Katie Waldow (Seller).

6. READING RESULTS

A control line (C) should always appear, indicating the test is working correctly. The presence and intensity of the test line (T) determine the result.

6.1. Ovulation Test Results

- **Positive (LH Surge):** Two color bands are visible, and the test band (T) is equal to or darker than the control band (C). This indicates you will likely ovulate in the next 24-48 hours.
- **Negative (No LH Surge):** Only one color band appears on the control region (C), or the test band (T) appears but is lighter than the control band (C).

- **Invalid:** No visible band at all, or only a test band (T) appears without a control band (C). Test again with a new strip.

6.2. Pregnancy Test Results

- **Positive (Pregnant):** Distinct red lines appear on both the control region (C) and the test region (T). The color intensity of the test bands may vary due to different concentrations of HCG at different stages of pregnancy.
- **Negative (Not Pregnant):** Only one red line appears on the control region (C). No apparent line appears on the test region (T).
- **Invalid:** No visible band at all, or only a test band (T) appears without a control band (C). Test again with a new strip.

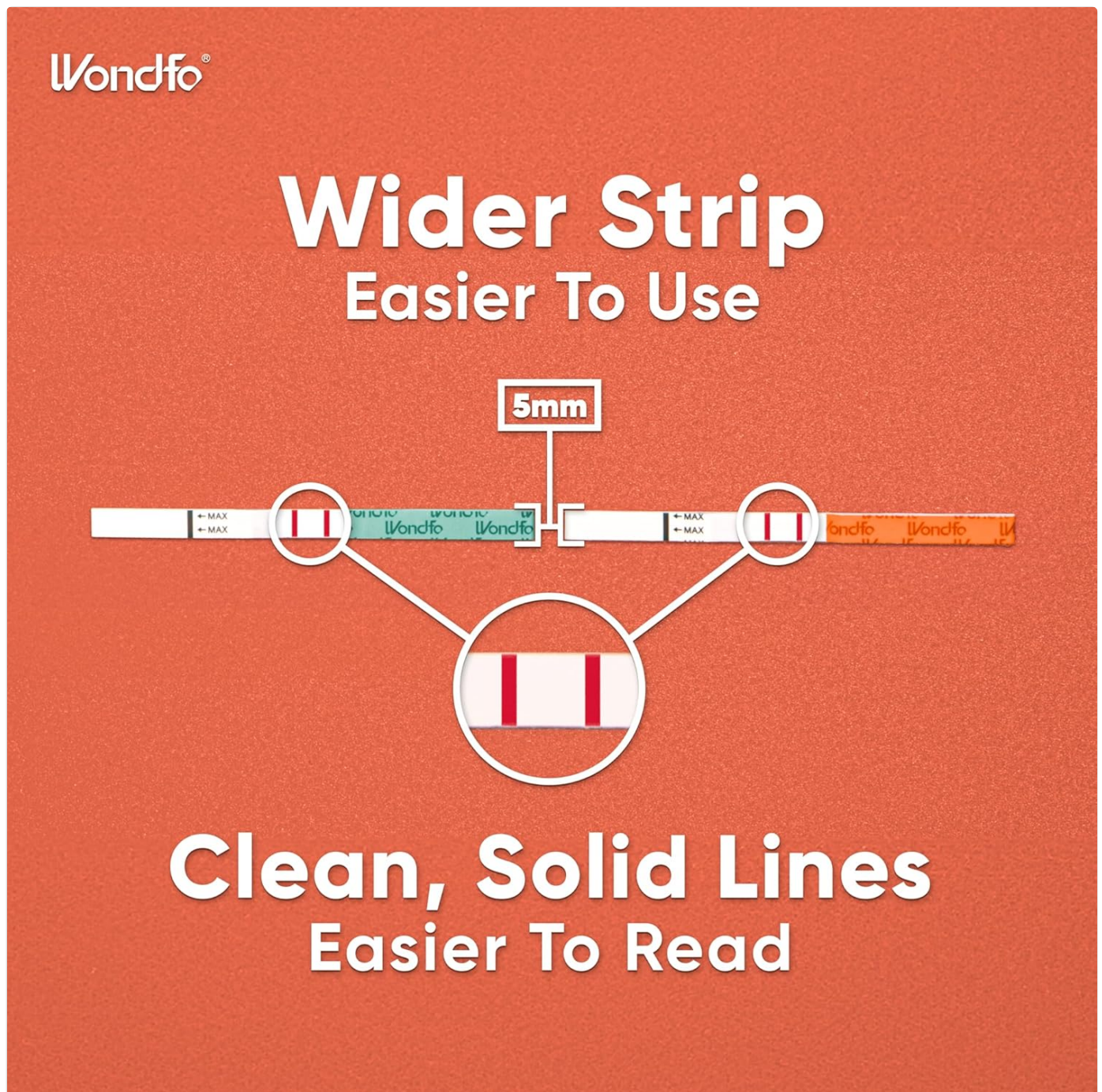


Image: A guide illustrating how to interpret positive, negative, and invalid results for both ovulation and pregnancy tests.

7. IMPORTANT CONSIDERATIONS

- Always read the instructions thoroughly before performing any test.

- Do not use expired test strips. Check the expiration date on the pouch.
- For ovulation tests, a positive result indicates an LH surge, not necessarily that ovulation has occurred.
- For pregnancy tests, a faint line on the test region (T) can still indicate a positive result. The intensity of the line may increase as HCG levels rise.
- If you receive an unexpected result or have concerns, consult a healthcare professional.

8. STORAGE

Store the test strips in their sealed pouches at room temperature (4-30°C / 39-86°F). Do not freeze. Keep away from direct sunlight, moisture, and heat.

9. TROUBLESHOOTING

Problem	Possible Cause	Solution
No control line appears.	Insufficient urine sample, or test strip is faulty/expired.	Repeat the test with a new strip and ensure proper immersion. Check expiration date.
Test line is too faint (for ovulation).	LH surge has not yet occurred, or urine is too diluted.	Continue testing daily. Avoid excessive fluid intake before testing.
Test line is too faint (for pregnancy).	Very early pregnancy, or urine is too diluted.	Re-test in 2-3 days with first-morning urine. HCG levels double every 48-72 hours in early pregnancy.

10. SPECIFICATIONS

- **Product Dimensions:** 10.6 x 0.9 x 0.2 inches
- **Item Weight:** 6.72 ounces
- **HCG Sensitivity:** 25 mIU/ml
- **LH Sensitivity:** 25 mIU/ml
- **Test Type:** Rapid qualitative immunoassay
- **Result Time:** 3-5 minutes
- **Manufacturer:** Wondfo
- **Model Number:** B00RY8UBNC

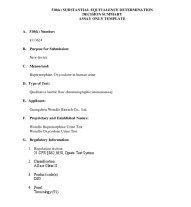


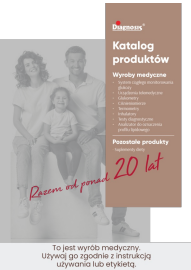
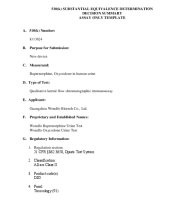

11. WARRANTY AND SUPPORT

For any questions, concerns, or support regarding your Wondfo Fertility Combination Test Kit, please contact Wondfo customer service. Refer to the product packaging or the official Wondfo website for the most current contact information and warranty details.

Legal Disclaimer: Statements regarding dietary supplements have not been evaluated by the FDA and are not intended to diagnose, treat, cure, or prevent any disease or health condition. These tests are for in-vitro diagnostic use only.



Related Documents - B00RY8UBNC

	<p>Wondfo Buprenorphine and Oxycodone Urine Test 510(k) Summary</p> <p>This document summarizes the 510(k) substantial equivalence determination for the Wondfo Buprenorphine Urine Test and Wondfo Oxycodone Urine Test, outlining their intended use, device description, performance characteristics, and comparison with predicate devices.</p>
	<p>Wondfo 2019-nCoV Antigen Test: Nasal Swab Self-Test Instructions and Guide</p> <p>Detailed instructions for using the Wondfo 2019-nCoV Antigen Test (Lateral Flow Method) nasal swab self-test. Covers intended use, test principle, precautions, step-by-step procedure, result interpretation, and performance characteristics.</p>
	<p>Easy@Home Ovulation & Pregnancy Test Kit Instructions - EZW2-S+EZW1-S</p> <p>Detailed instructions for using Easy@Home ovulation and pregnancy test strips (EZW2-S+EZW1-S). Learn how to perform tests, interpret results, and understand important precautions for fertility and pregnancy detection. Compatible with the Premom app.</p>
	<p>Diagnosis Product Catalog - Medical Devices and Health Supplements</p> <p>Comprehensive catalog of Diagnosis products, including telemedical devices, blood glucose monitors, blood pressure monitors, thermometers, inhalers, diagnostic tests, lipid profile analyzers, and a range of dietary supplements for immunity, muscle health, concentration, and more.</p>
	<p>Wondfo Buprenorphine and Oxycodone Urine Test 510(k) Summary</p> <p>This document summarizes the 510(k) substantial equivalence determination for the Wondfo Buprenorphine Urine Test and Wondfo Oxycodone Urine Test, outlining their intended use, device description, performance characteristics, and comparison with predicate devices.</p>
	<p>Wondfo 2019-nCoV Antigen Test: Nasal Swab Self-Test Instructions and Guide</p> <p>Detailed instructions for using the Wondfo 2019-nCoV Antigen Test (Lateral Flow Method) nasal swab self-test. Covers intended use, test principle, precautions, step-by-step procedure, result interpretation, and performance characteristics.</p>