

## APS HT-R30116

# APS Class 3 Tow Trailer Hitch User Manual

**Brand:** APS

**Model:** HT-R30116 (Ram 1500 Receiver Hitch)

## 1. INTRODUCTION

---

This manual provides essential information for the installation, operation, and maintenance of your APS Class 3 Tow Trailer Hitch. Designed for compatibility with 2003-2019 Dodge Ram 1500, 2500, and 3500 models, this hitch offers reliable towing capabilities. It features a 2-inch receiver tube and is constructed from heavy-duty carbon steel with a durable black powder coat finish for enhanced rust resistance and longevity. Please read this manual thoroughly before installation and use to ensure safe and proper operation.

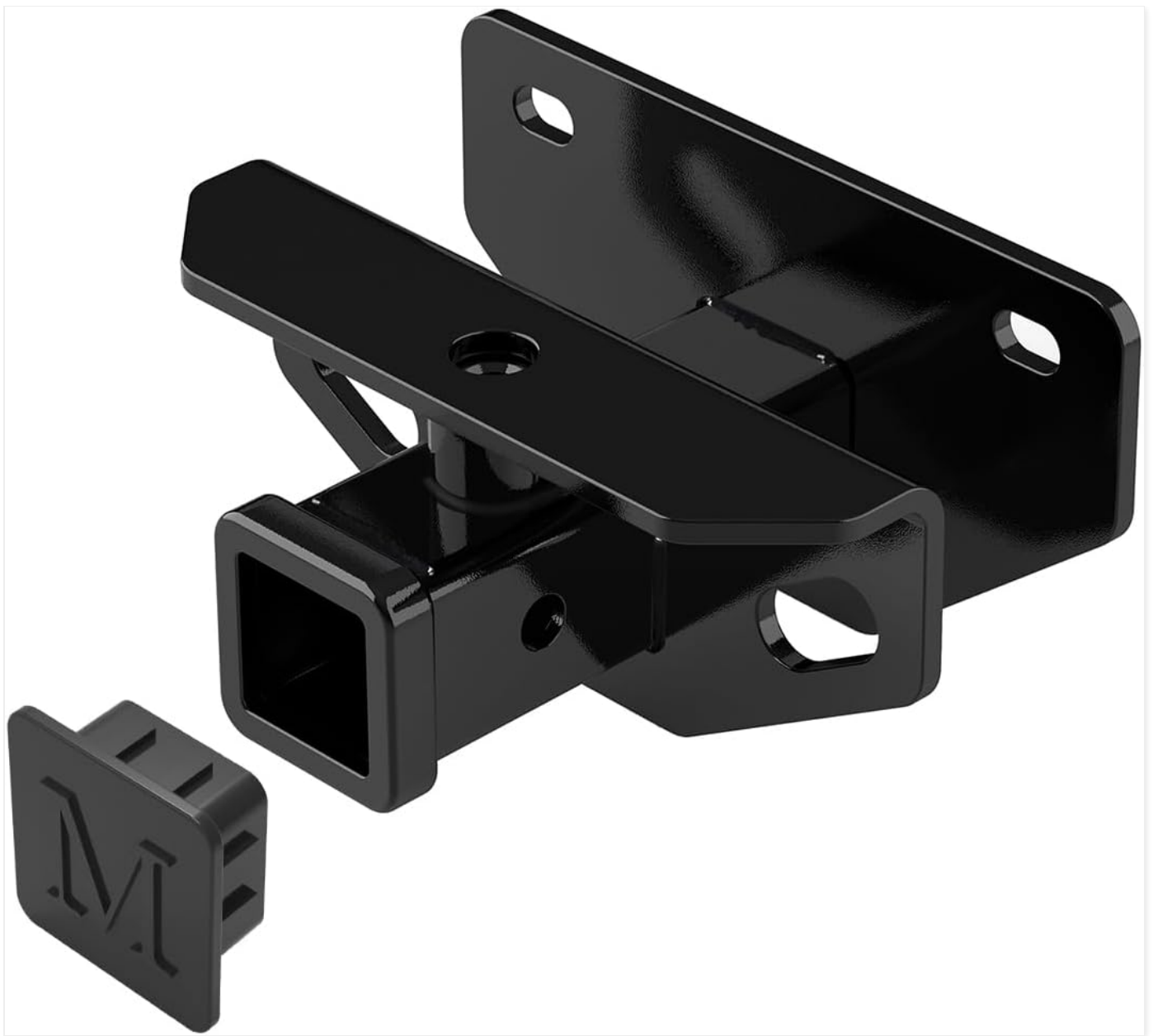


Image: The APS Class 3 Tow Trailer Hitch, a robust black steel component, shown with its square receiver opening and a separate black rubber receiver cover.

## 2. SAFETY INFORMATION

---

Your safety and the safety of others are paramount. Adhere to all safety guidelines to prevent injury or damage.

- **Vehicle Weight Rating:** Never exceed your vehicle's maximum weight rating or the hitch's stated capacity, whichever is lower. Refer to your vehicle's owner's manual for specific towing capacities.
- **Standards Compliance:** This hitch is tested for safety in accordance with SAE J684 and exceeds V5 Standards. Ensure all components are installed correctly to maintain these safety ratings.
- **Secure Installation:** Ensure all mounting hardware is properly tightened before each use. Regularly inspect bolts for tightness and the hitch for any signs of wear or damage.
- **Professional Installation Recommended:** While designed for easy bolt-on installation, if you are unsure about any step, seek professional assistance.
- **Regular Inspection:** Before each towing operation, inspect the hitch, trailer coupler, safety chains, and electrical connections for proper function and secure attachment.
- **Hitch Cover:** Use the included hitch cover when the receiver is not in use to protect it from debris and corrosion.

### 3. PACKAGE CONTENTS

---

Verify that all components listed below are present in your package:

- Class 3 Trailer Hitch (1 unit)
- All Necessary Mounting Hardware (bolts, washers, nuts as required)
- Trailer Hitch Rubber Cover (1 unit)
- DIY Instruction (This Manual)



Image: An overhead view showing the main hitch component, the rubber receiver cover, two large bolts, and one smaller pin/screw, representing the typical package contents.

### 4. SETUP AND INSTALLATION

---

The APS Class 3 Tow Trailer Hitch is designed for easy bolt-on installation with no drilling required for compatible vehicles. Follow these general steps:

1. **Prepare Vehicle:** Park your vehicle on a level surface and engage the parking brake. For easier access, you may consider lowering the spare tire, though it may not be strictly necessary.
2. **Locate Mounting Points:** Identify the existing mounting holes on your vehicle's frame. These are typically located at the rear of the vehicle, near the bumper.
3. **Position Hitch:** Carefully lift the hitch into position, aligning the holes on the hitch with the mounting holes on the vehicle's frame. It may be helpful to have a second person assist with this step.
4. **Install Hardware:** Insert the provided bolts through the aligned holes. Secure them with washers and nuts as per the hardware diagram (refer to included DIY instruction sheet for specific hardware placement).
5. **Tighten Bolts:** Hand-tighten all bolts first to ensure proper alignment. Once all bolts are in place, progressively tighten them using appropriate tools. Refer to your vehicle's service manual or a professional for recommended torque specifications for hitch mounting bolts. Ensure all bolts are securely fastened.
6. **Final Check:** Double-check all connections and ensure the hitch is securely mounted and stable.



**Easy  
Installation**



**All Hardware  
Included**



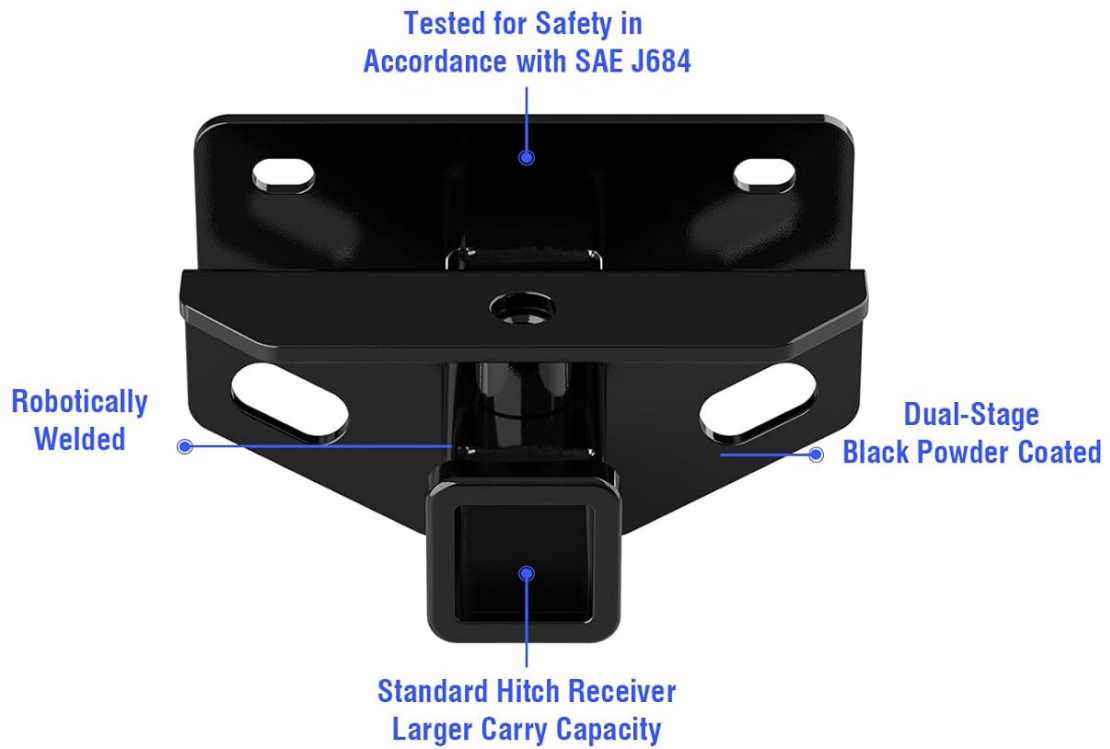
**Weather  
Resistant**



**Strong  
& Durable**

Image: A rear view of a truck showing the APS Class 3 Trailer Hitch installed below the bumper, highlighting its 2-inch receiver opening and robust construction.

# Feature & Benifits



## Back View



Image: A diagram illustrating the features of the hitch, including robotically welded joints, dual-stage black powder coating, and its compliance with SAE J684 standards for safety.



# AUTOMATIC ROBOT WELDING



**Design** Solid One Piece Welded

**Frame** Durable Steel Construction

**Welding** Robotic Welding Process

**Seam** Ever-Flawless Weld Seams

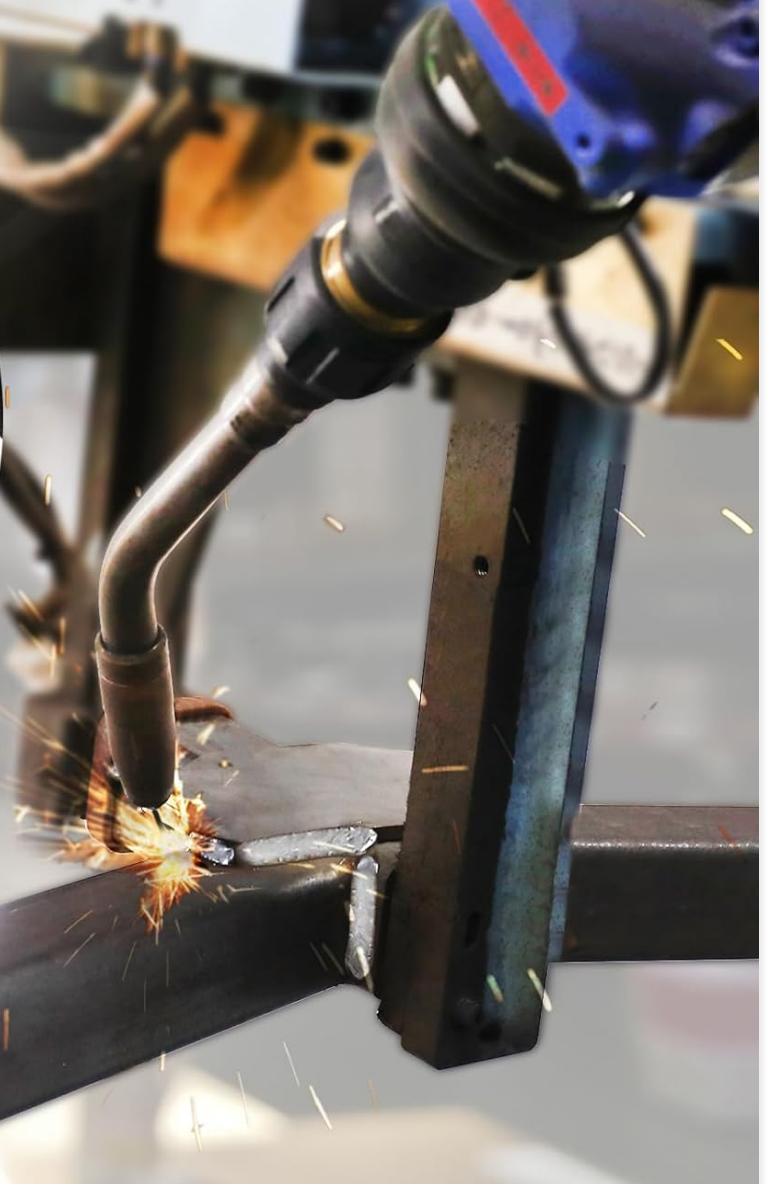


Image: A close-up view of the hitch being manufactured using an automatic robot welding process, emphasizing solid one-piece welded design and durable steel construction.

## 5. OPERATING INSTRUCTIONS

Your APS Class 3 Tow Trailer Hitch is designed for versatile use with various towing and carrying applications:

- **Towing Trailers:** Compatible with a wide range of trailers including utility trailers, boat trailers, and camp trailers. Ensure your trailer's coupler is compatible with a 2-inch receiver.
- **Weight Distribution Systems:** Can be used with weight distribution hitches to distribute trailer tongue weight more evenly across vehicle axles, improving stability and handling.
- **Trailer Hitch Ball Mounts:** Attach a suitable trailer hitch ball mount with the correct ball size for your trailer.
- **Cargo Carriers:** Ideal for attaching hitch-mounted cargo carriers to expand your vehicle's hauling capacity.
- **Bike Carriers:** Use with hitch-mounted bike racks for transporting bicycles securely.
- **Other Accessories:** Suitable for various other 2-inch receiver accessories such as kayak trailers.

Always ensure that any accessory or trailer attached to the hitch is properly secured with a hitch pin and clip, and that safety chains are correctly connected when towing.



Image: An illustration demonstrating the versatility of the hitch, showing it used with various attachments like weight distribution systems, ball mounts, cargo carriers, bike carriers, and for towing different types of trailers including kayak, boat, camp, and utility trailers.

## 6. MAINTENANCE

Proper maintenance will extend the life and ensure the safe operation of your tow hitch.

- **Regular Inspection:** Periodically inspect the hitch for any signs of rust, cracks, bends, or other damage. Pay close attention to weld points and mounting areas.
- **Bolt Tightness:** Check all mounting bolts regularly, especially after the first few uses and before each towing trip, to ensure they remain securely tightened. Re-tighten if necessary.
- **Cleaning:** Clean the hitch periodically with mild soap and water to remove dirt, salt, and road grime. Rinse thoroughly and dry.
- **Corrosion Protection:** Although the hitch features a durable high-gloss black powder coat finish and a special "E-

coating" for rust resistance, applying a thin layer of automotive wax or a rust-inhibiting spray to exposed metal surfaces can provide additional protection, especially in harsh environments.

- **Receiver Tube Care:** Keep the inside of the receiver tube clean and free of debris. Use the included rubber hitch cover when not in use to prevent dirt and moisture from accumulating.

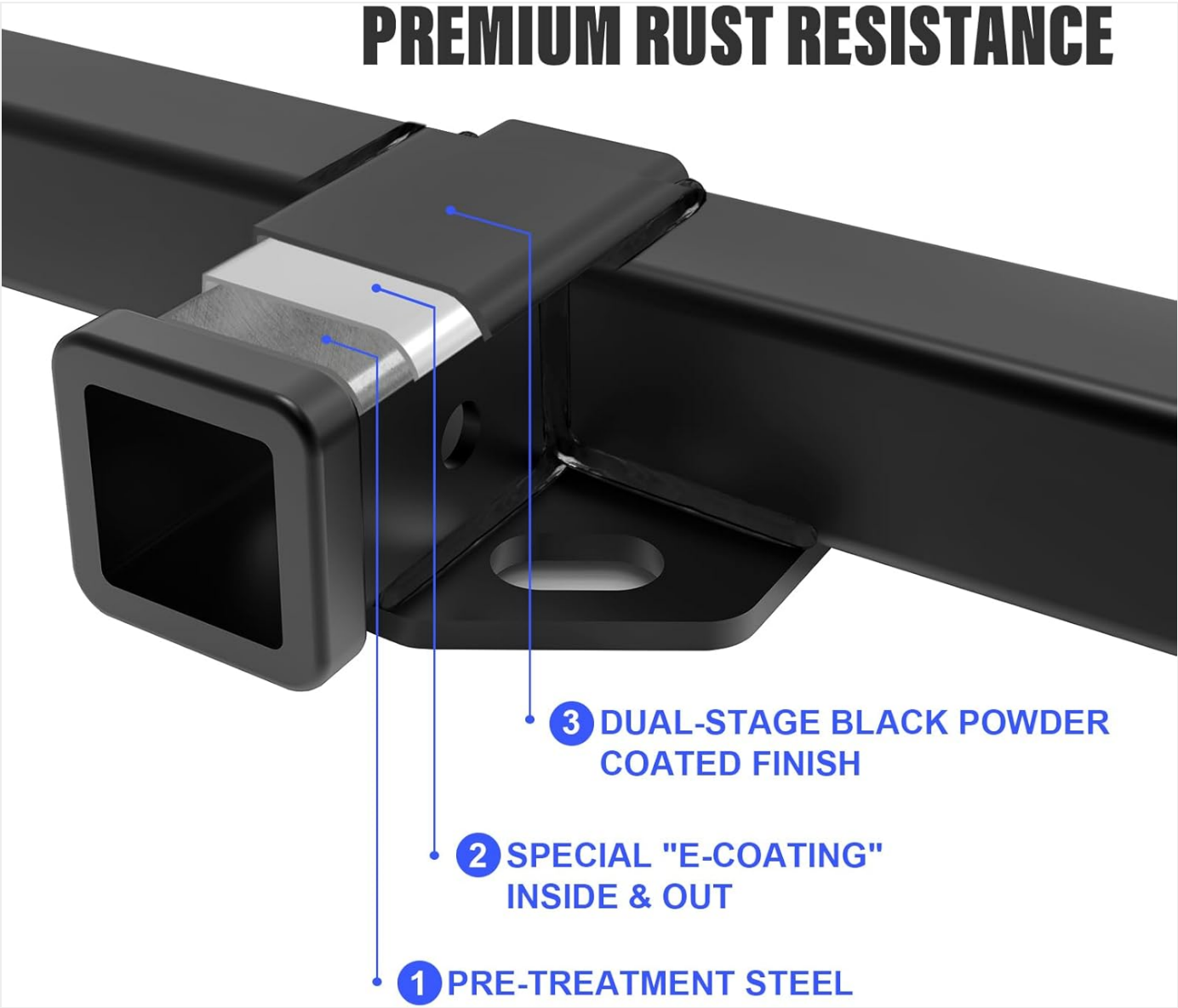


Image: A cutaway diagram illustrating the three layers of rust resistance: pre-treatment steel, special "E-coating" inside and out, and a dual-stage black powder coated finish.

## 7. TROUBLESHOOTING

This section addresses common issues you might encounter.

Issue	Possible Cause	Solution
Hitch feels loose after installation.	Mounting bolts are not sufficiently tightened.	Re-tighten all mounting bolts to the recommended torque specifications. Ensure proper washers and nuts are used.
Difficulty inserting hitch pin.	Debris or rust inside the receiver tube; misaligned accessory.	Clean the receiver tube thoroughly. Ensure the accessory is fully inserted and aligned with the pin holes.



Issue	Possible Cause	Solution
Visible rust spots appearing.	Surface scratches exposing bare metal; prolonged exposure to harsh elements without cleaning.	Clean the affected area and apply a rust-inhibiting paint or coating. Ensure regular cleaning and use of the hitch cover.
Hitch does not fit vehicle.	Incorrect vehicle model year or make; manufacturing defect.	Verify compatibility with your vehicle's make, model, and year (2003-2019 Dodge Ram 1500/2500/3500). Contact customer support if compatibility is confirmed but fitment is an issue.

## 8. SPECIFICATIONS

Attribute	Detail
Brand	APS
Model Number	HT-R30116
Receiver Tube Size	2 Inches
Hitch Class	Class 3
Material	Heavy Duty Carbon Steel
Finish Type	Powder Coated (Dual-stage black) with E-coating
Compatibility	2003-2019 Dodge Ram 1500, 2500, 3500
Installation	Easy Bolt-on, No Drilling Required
Safety Standards	Exceeds V5 Standards, Tested in Accordance with SAE J684
Item Weight	13.64 Pounds
Product Dimensions	14 x 10 x 8 inches
Country of Origin	China
UPC	720189774966

## 9. WARRANTY AND SUPPORT


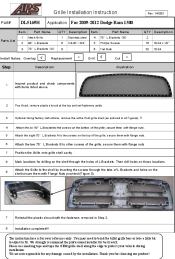
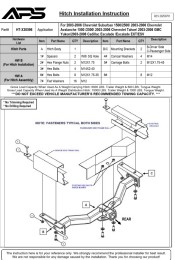
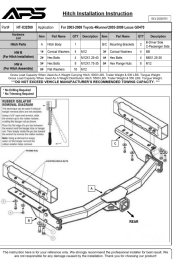

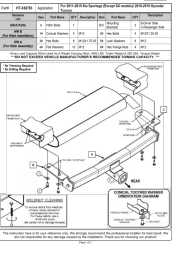
For warranty information or technical support regarding your APS Class 3 Tow Trailer Hitch, please contact the manufacturer directly. Details can typically be found on the product packaging or the official APS website. Keep your purchase receipt as proof of purchase for any warranty claims.

**Manufacturer:** APS

**Website:** [Visit the APS Store on Amazon](#) (for general brand information)



## Related Documents - HT-R30116

	<p><a href="#">APS D76864T/H Grille Installation Instructions for Ram 2500/3500</a></p> <p>Detailed installation guide for the APS D76864T/H grille replacement for 2011-2012 Ram 2500/3500 and 2010-2010 Dodge Ram 2500/3500 models. Includes parts list and step-by-step instructions.</p>
	<p><a href="#">APS Grille Installation Instructions for 2009-2012 Dodge Ram 1500 (DL5169H)</a></p> <p>Step-by-step installation guide for the APS DL5169H aftermarket grille designed for 2009-2012 Dodge Ram 1500 models. Includes a comprehensive parts list and detailed assembly instructions.</p>
	<p><a href="#">APS HT-X30596 Hitch Installation Instructions for Chevrolet, GMC, Cadillac</a></p> <p>Detailed installation guide for the APS HT-X30596 trailer hitch, compatible with 2003-2006 Chevrolet Suburban, Avalanche, Tahoe, GMC Yukon, and Cadillac Escalade models. Includes hardware list and step-by-step instructions.</p>
	<p><a href="#">APS Hitch Installation Instructions for Toyota 4Runner and Lexus GX470</a></p> <p>Detailed installation guide for the APS HT-X32500 trailer hitch, designed for 2003-2009 Toyota 4Runner and 2003-2009 Lexus GX470 vehicles. Includes hardware list, capacity ratings, and step-by-step instructions.</p>
	<p><a href="#">APS Grille Installation Instructions for Chevy Silverado</a></p> <p>Step-by-step installation guide for APS Grille for 2005-2007 Chevy Silverado models, including parts list and important notes.</p>
	<p><a href="#">APS HT-X38783 Hitch Installation Instructions for Kia Sportage and Hyundai Tucson</a></p> <p>Step-by-step installation guide for the APS HT-X38783 trailer hitch receiver, compatible with 2011-2015 Kia Sportage (non-SX) and 2010-2015 Hyundai Tucson models. Includes hardware list, torque specifications, and important safety notes.</p>

