

[Manuals.plus](#) /

> [3M Littmann](#) /

> 3M Littmann Classic III Monitoring Stethoscope User Manual

3M Littmann 5803

3M Littmann Classic III Monitoring Stethoscope User Manual

Model: 5803

1. OVERVIEW

The 3M Littmann Classic III Monitoring Stethoscope, model 5803, is designed for clinicians who monitor and assess patients in non-critical environments. This instrument is suitable for both children and adults, offering reliable acoustic performance. It is constructed with durable, lightweight materials for extended comfortable use.

Key features include:

- Monitor and assess a wide range of patients.
- Detect normal and abnormal sounds and rhythms.
- Useful in non-critical care environments such as a medical office, general ward, OB/GYN, ambulatory clinic, or urgent care.
- Designed with strong yet lightweight materials for hours of comfortable use.



Image: The 3M Littmann Classic III Monitoring Stethoscope in black, showcasing its full design.



Image: A close-up of the stethoscope's chestpiece, highlighting its lightweight design.

2. SETUP

Before first use, ensure all components are securely assembled for optimal performance.

1. **Ear Tip Adjustment:** The ear tips should fit snugly into your ear canals. Rotate the headset so the ear tubes point forward, aligning with your ear canals. This ensures optimal sound transmission and comfort.
2. **Chestpiece Orientation:** The Classic III features a dual-sided chestpiece. To activate either the adult or pediatric side, rotate the stem until the desired side is open. A slight click indicates proper engagement.



3M
Littmann[®]
Stethoscopes

Classic III[™]

Monitor and assess a wide range of patients

Image: Front view of the stethoscope, illustrating the headset and chestpiece components.

3. OPERATING INSTRUCTIONS

The Littmann Classic III Stethoscope is designed for effective auscultation across various patient types and clinical needs.

- 1. Adult Diaphragm Use:** Use the larger side of the chestpiece for adult patients. Apply light pressure to hear low-frequency sounds, and firm pressure to hear high-frequency sounds.
- 2. Pediatric Diaphragm Use:** The smaller side is ideal for pediatric patients or for auscultating smaller areas. This side can also be converted into a traditional open bell by removing the single-piece diaphragm and replacing it with a non-chill bell sleeve (sold separately).
- 3. Auscultation Technique:** Place the chestpiece firmly on the patient's skin. Listen for heart, lung, and bowel sounds. The stethoscope is engineered to help detect normal and abnormal sounds and rhythms, even at lower frequencies (below 120Hz) more reliably than some comparable stethoscopes.
- 4. Clinical Environment:** This stethoscope is particularly useful in non-critical care settings such as medical offices, general wards, OB/GYN clinics, ambulatory clinics, or urgent care facilities.

Weights less*

than other stethoscopes

**Designed and
manufactured
in the USA** with
globally-sourced
materials



*Based on published weights of globally-available comparable stethoscopes in an equivalent class.

Image: A detailed view of the dual-sided chestpiece, indicating the adult and pediatric diaphragm sizes.



Hear heart sounds **below**
120Hz*

*More reliably and consistently hear heart sounds at lower frequencies (below 120Hz) like Korotkoff sounds, Mitral Stenosis and S3 and S4 Gallops, when compared to the next leading stethoscope, using recorded normal heart sounds with diaphragm.

Image: A healthcare professional using the stethoscope to monitor a patient, demonstrating its application for a wide range of assessments.



Image: A doctor using the stethoscope on a child, illustrating its suitability for non-critical care settings.

4. MAINTENANCE AND CARE

Proper care and maintenance are essential to ensure the longevity and optimal performance of your stethoscope.

- **Cleaning:** Clean the stethoscope regularly with a 70% isopropyl alcohol solution or a disposable wipe. Do not immerse the stethoscope in any liquid.
- **Disinfection:** For high-level disinfection, follow your institution's established protocols for medical devices.
- **Storage:** Store your stethoscope away from extreme heat, cold, solvents, and oils. Avoid sharp objects that could puncture the tubing.
- **Ear Tips:** Remove ear tips periodically for thorough cleaning of the ear tubes. Ensure they are securely reattached before each use.



Image: A close-up of the stethoscope chestpiece, emphasizing its durable construction.

5. TROUBLESHOOTING

If you experience issues with your stethoscope, consider the following common solutions:

- **Poor Sound Quality:**
 - Check ear tip fit: Ensure ear tips are securely attached and correctly oriented towards your ear canals.
 - Clear tubing: Inspect the tubing for any blockages or cracks.
 - Chestpiece orientation: Confirm the correct side of the dual-sided chestpiece is open. Rotate the stem 180 degrees if necessary.
 - Diaphragm integrity: Check the diaphragm for cracks, tears, or loose fit.
- **Loose Parts:** Ensure all components, including the ear tips and chestpiece diaphragm, are firmly attached.
- **Environmental Noise:** Minimize ambient noise during auscultation for clearer sound perception.

6. SPECIFICATIONS

Detailed specifications for the 3M Littmann Classic III Monitoring Stethoscope, model 5803.

Model Number	5803
Chestpiece Finish	Black-Finish Stainless Steel
Tube Length	69 cm (27 inches)
Tube Color	Black
Chestpiece Type	Two-sided, tunable diaphragm (adult and pediatric)
Diaphragm Material	Urethane
Ear Tip Material	Soft-sealing
Headset Material	Wide-diameter aerospace alloy
Weight	Approximately 100 g (3.53 Ounces)
Material	Rubber (tubing)
Country of Origin	USA

Date First Available

February 24, 2015



Image: Visual comparison of the Classic III with other Littmann stethoscope models, highlighting design differences.

7. WARRANTY AND SUPPORT

The 3M Littmann Classic III Monitoring Stethoscope comes with a 5-year service warranty. For product information, technical support, or warranty claims, please visit the official 3M website or contact customer service.

- **Online Resources:** Visit www.3M.ca for additional product information and Safety Data Sheet (SDS) search.
- **Learning Institute App:** Enhance your auscultation skills with the 3M Littmann Learning Institute app. Download the free app and use your stethoscope's serial number to unlock educational content, including lessons with heart and lung sounds, patient scenarios, and self-tests.

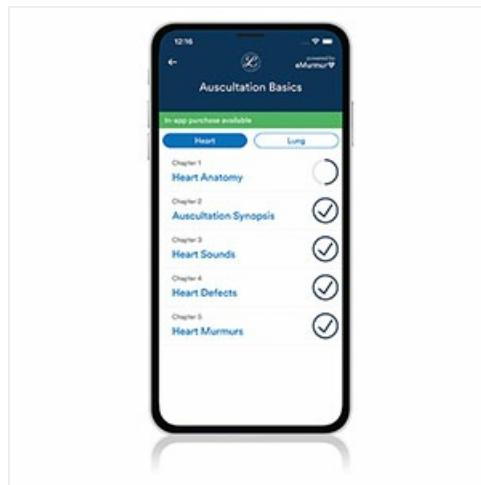


Image: The Littmann Learning Institute app interface, offering educational resources for stethoscope users.