

D-Link DGS-1210-52MP

D-Link 52-Port Gigabit Smart Managed PoE+ Switch User Manual

Model: DGS-1210-52MP

Brand: D-Link

1. INTRODUCTION

The D-Link DGS-1210-52MP is a high-performance 52-Port Gigabit Smart Managed PoE+ Switch designed to meet the evolving demands of modern network infrastructures. This switch provides 48 Power over Ethernet Plus (PoE+) ports, capable of delivering up to 30W per port with a total power budget of 370W, ideal for powering devices such as IP cameras, Wi-Fi access points, and VoIP phones. Additionally, it features 4 Gigabit Combo SFP ports for flexible high-speed uplinks.

Built with D-Link Green 3.0 technology, the DGS-1210-52MP is energy-efficient, complying with IEEE 802.3az Energy Efficient Ethernet standards. It offers robust Layer 2 features, comprehensive security, and intuitive web-based management, making it a versatile and reliable solution for small to medium-sized businesses and surveillance systems.

2. SETUP

This section outlines the basic steps for setting up your D-Link DGS-1210-52MP switch.

2.1 Package Contents

Before you begin, ensure all items are present in the package:

- DGS-1210-52MP Switch
- Power Cord and Retainer

- Rackmount Kit
- Rubber Feet
- Quick Installation Guide (refer to the full User Guide PDF for detailed instructions)

2.2 Physical Installation

The DGS-1210-52MP is designed for rackmount installation but can also be placed on a desktop or shelf using the provided rubber feet.

1. **Rack Mounting:** Attach the rackmount brackets to the sides of the switch using the screws provided in the kit. Secure the switch into a standard 19-inch equipment rack.
2. **Desktop Placement:** Attach the four rubber feet to the recessed areas on the bottom of the switch. Place the switch on a flat, stable surface with adequate ventilation.

2.3 Connecting the Switch

Follow these steps to connect your switch to the network and power:

1. **Connect Power:** Insert the power cord into the AC inlet on the rear panel of the switch. Secure it with the power cord retainer. Plug the other end of the power cord into a suitable power outlet.
2. **Connect to Network:** Connect an Ethernet cable from your router or existing network to any of the Gigabit Ethernet ports on the switch.
3. **Connect Devices:** Connect your network devices (e.g., computers, IP cameras, access points) to the remaining Ethernet ports on the switch. For PoE-powered devices, ensure they are connected to the PoE+ enabled ports.



Figure 2.3.1: Front view of the DGS-1210-52MP switch, showing 48 PoE+ Gigabit ports and 4 SFP ports.



Figure 2.3.2: Rear view of the DGS-1210-52MP switch, highlighting the power input and grounding point.

2.4 Initial Access to Web UI

The switch can be managed via an intuitive web-based user interface. For initial access, connect a computer directly to the switch and configure your computer's IP address to be in the same subnet as the switch's default IP address (refer to the full User Guide for default IP and login credentials).

3. OPERATING THE SWITCH

The DGS-1210-52MP offers a wide range of features for efficient network operation and management.

3.1 Power over Ethernet (PoE+) Capabilities

The switch provides 48 PoE+ ports, delivering power and data over a single Ethernet cable. This simplifies deployment of PoE-enabled devices by eliminating the need for separate power outlets.

PoE and PoE+ with budgets up to 370W

The **DGS-1210 Smart Switch Series** offers PoE switches for powering and connecting devices such as WiFi access points, cameras, VoIP phones, smart lighting, and access controls.

DGS-1210-52MP
D-Link 52-Port PoE+ Gigabit Smart Managed Switch
48 PoE + Ports (**370W** PoE Budget) with 4 Combo SFP Ports

SMART. VERSATILE. SCALABLE.

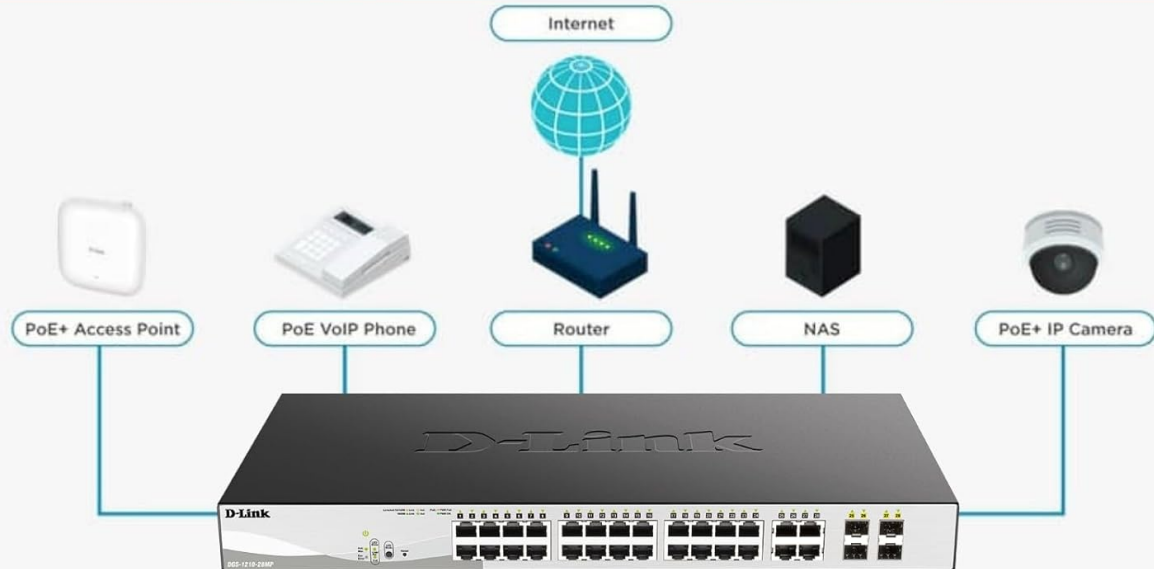
Business Solutions Provider
for over 35 Years

NDAA COMPLIANT

Figure 3.1.1: PoE and PoE+ capabilities with a 370W budget, enabling power for various network devices.

THE BENEFIT OF PoE

Eliminates extra wiring and provides flexible device placement



Power over Ethernet (PoE) removes extra wiring, enabling flexible device placement without nearby outlets

Without PoE



With PoE

One Ethernet cable provides power and connectivity.



Figure 3.1.2: The benefit of PoE, simplifying installations by reducing cable clutter.

3.2 Advanced Traffic Management

The switch includes advanced Layer 2+ features to optimize network performance and minimize congestion:

- **Bandwidth Control:** Manage network traffic flow.
- **Quality of Service (QoS):** Prioritize critical network traffic.
- **VLAN Support:** Segment the network for improved security and performance.
- **Port Mirroring:** Monitor network traffic by copying it to a designated port.
- **Link Aggregation (LACP):** Combine multiple ports for increased bandwidth and redundancy.
- **Spanning Tree Protocol (STP):** Prevent network loops.
- **IGMP Snooping:** Optimize multicast traffic.
- **Static Routing:** Enable basic routing capabilities.

ADVANCED TRAFFIC HANDLING

with Layer 3 Features & Security



COMPREHENSIVE MANAGEMENT

VLANS, MSTP, LACP and static routing via multiple interfaces

ROBUST NETWORK DEFENSE

Reduces broadcast, multicast, and unicast flood risks to protect network integrity with access control lists, port security and D-Link Safeguard Engine.



Figure 3.2.1: Advanced traffic handling features for optimized network performance.

3.3 Comprehensive Security Features

The DGS-1210-52MP integrates various security mechanisms to protect your network:

- **Access Control List (ACL):** Filter traffic based on MAC or IP addresses.
- **802.1X / RADIUS:** Port-based authentication for network clients.
- **ARP Spoofing Prevention:** Protect against malicious ARP messages.
- **D-Link Safeguard Engine:** Protects the switch from traffic flooding caused by virus attacks.
- **DHCP Server Screening:** Blocks rogue DHCP server packets.

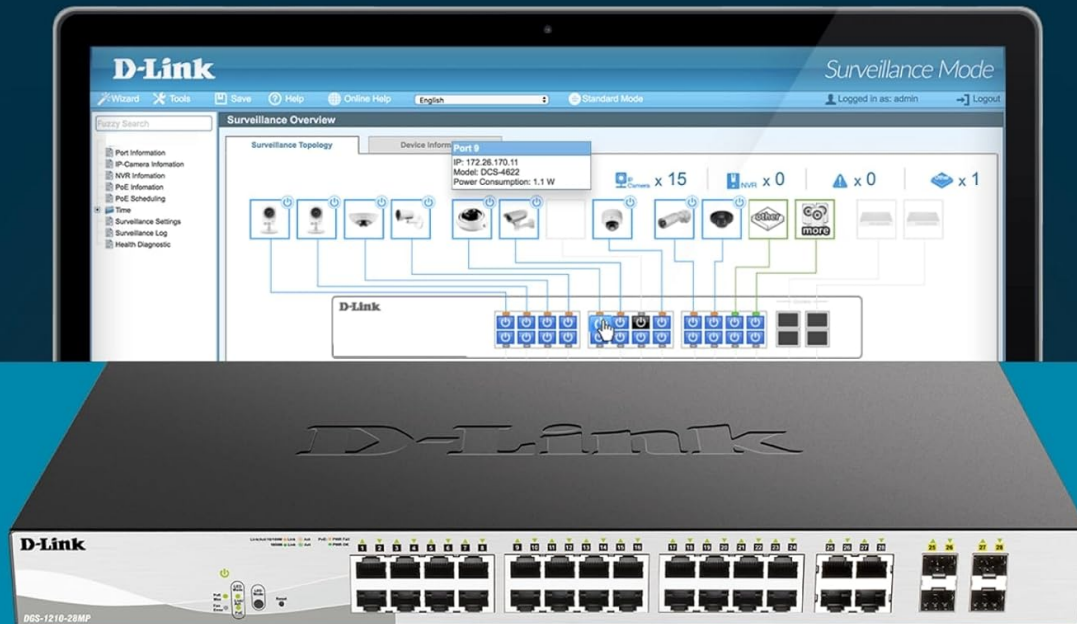
3.4 Surveillance Mode with ONVIF Support

This mode simplifies the deployment and management of IP surveillance networks. It automatically detects ONVIF-compliant devices and optimizes video traffic for secure and efficient handling.

SURVEILLANCE MODE

Manage Your Surveillance Network Effortlessly

Switch to Surveillance Mode in the Web UI for seamless surveillance management. This mode effortlessly organizes your security devices into an Auto Surveillance VLAN to enhance the security and efficient handling of video surveillance traffic through automatic detection and segmentation.



DGS-1210 Smart Managed Series

Business Solutions Provider
for over 35 Years

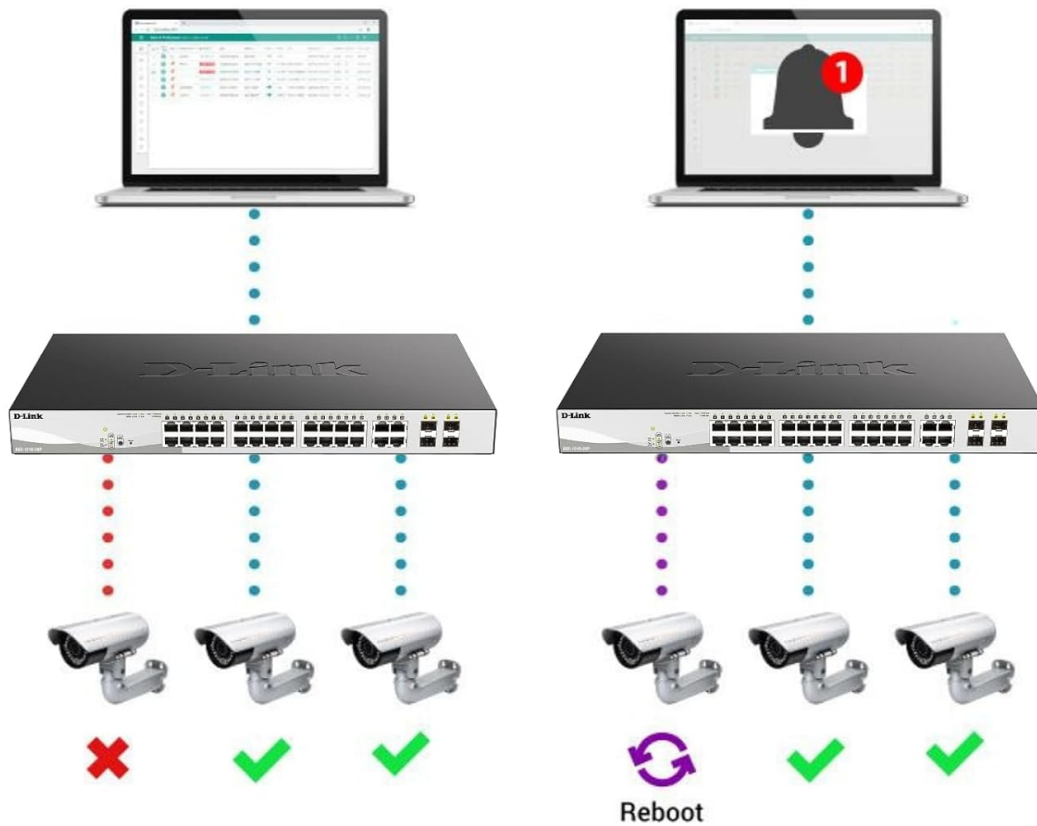


Figure 3.4.1: Web UI displaying Surveillance Mode for easy management of IP cameras.

3.5 PD Alive for Enhanced Reliability

The PD Alive feature automatically reboots unresponsive PoE devices, minimizing downtime and ensuring continuous network availability without manual intervention.

PD Alive Actively Mitigates Downtime by auto-rebooting unresponsive devices



Business Solutions Provider
for over 38 Years



DGS-1210 Series

Figure 3.5.1: PD Alive feature automatically reboots unresponsive PoE devices.

3.6 Intuitive Web-Based Management

The switch features a user-friendly web interface for easy setup, monitoring, and management. It offers integrated tools for troubleshooting and streamlining network oversight.

INTUITIVE WEB MANAGEMENT

Easy Setup, Monitoring and Management

The DGS-1210 Smart Managed Switch Series offers Standard and Surveillance modes, auto-detects ONVIF devices including D-Link and third-party IP cameras, and NVRs. Its integrated tools simplify monitoring, troubleshooting, and setup via an intuitive web interface, streamlining network oversight.



Figure 3.6.1: Intuitive web management interface for easy configuration and monitoring.

3.7 Nuclias Connect Management (Optional)

For scalable and flexible control, the DGS-1210-52MP can be optionally managed via Nuclias Connect, a free software that allows centralized control and insightful reporting for up to 1,500 D-Link DAP Access Points and DGS-1210 Smart Switches.

COMPREHENSIVE NETWORK MANAGEMENT

FREE DOWNLOAD
SOFTWARE

 **nuclias**
connect



No Subscription Fee

Figure 3.7.1: Nuclias Connect software for centralized network management.

4. MAINTENANCE

Proper maintenance ensures the longevity and optimal performance of your DGS-1210-52MP switch.

4.1 Firmware Updates

Periodically check the D-Link support website for the latest firmware updates. Keeping the firmware up-to-date can provide new features, performance improvements, and security patches. Refer to the official D-Link documentation for detailed instructions on performing firmware updates via the web UI or TFTP.

4.2 Cleaning

To maintain proper airflow and prevent overheating, regularly clean the ventilation openings on the switch. Use a soft, dry cloth to wipe the exterior. Do not use liquid or aerosol cleaners.

4.3 Environmental Considerations

Ensure the switch is operated within its specified environmental conditions (temperature, humidity) to prevent damage and ensure stable operation. Avoid placing the switch in direct sunlight or near heat sources.

5. TROUBLESHOOTING

This section provides solutions to common issues you might encounter with your DGS-1210-52MP switch.

5.1 No Power

- Ensure the power cord is securely connected to the switch and a working power outlet.
- Verify the power outlet is functional by plugging in another device.
- Check the power LED on the front panel of the switch. If it's off, there might be a power issue.

5.2 No Network Connectivity

- Check the link/activity LEDs for the connected ports on the switch. If the LED is off, verify the Ethernet cable connection at both ends.
- Ensure the connected device is powered on and functioning correctly.
- If using PoE, check the PoE status LED for the port. If a PoE device is unresponsive, the PD Alive feature may automatically reboot it.
- Verify IP address settings on your devices and ensure they are in the correct subnet.

5.3 Unable to Access Web Management Interface

- Ensure your computer's IP address is in the same subnet as the switch's IP address.
- Verify the physical connection between your computer and the switch.
- Try clearing your browser's cache or using a different web browser.
- If the default IP address has been changed and forgotten, you may need to perform a factory reset (refer to the full User Guide for reset procedures, which will erase all configurations).

5.4 Slow Network Performance

- Check for network loops using the Loopback Detection feature.
- Utilize Cable Diagnostics to identify faulty or damaged Ethernet cables.
- Review traffic management settings (QoS, bandwidth control) in the web UI to ensure they are configured appropriately for your network's needs.
- Ensure all devices are operating at their optimal speed (e.g., Gigabit connections).

6. SPECIFICATIONS

Attribute	Value
Model Number	DGS-1210-52MP
Brand	D-Link
Number of Ports	52 (48 PoE+ Gigabit, 4 Combo SFP)
PoE Power Budget	370W
Data Transfer Rate	2000 Megabits Per Second (Gigabit)
Interface Type	PoE, RJ45, SFP
Switch Type	Smart Managed
Dimensions (L x W x H)	17.32 x 16.93 x 1.73 inches
Item Weight	13.65 pounds
Case Material	Metal
Voltage	240 Volts
Color	Black; gray
NDAA Compliant	Yes
First Available Date	November 20, 2014

7. WARRANTY AND SUPPORT

The DGS-1210-52MP is supported by D-Link's Limited Lifetime Warranty, reflecting D-Link's commitment to product quality and long-term customer confidence. For detailed warranty terms and conditions, please refer to the official D-Link website or the documentation included with your product.

For further assistance, including comprehensive setup guides, advanced configuration options, and troubleshooting tips, please refer to the official User Guide PDF:

[Download User Guide \(PDF\)](#)

D-Link has over 35 years of experience in providing reliable networking solutions. For technical support, visit the D-Link support website or contact their customer service.