

Duravit 2222090092

Duravit Happy D.2 Wall-Mounted Toilet

MODEL: 2222090092 - USER MANUAL

Introduction

This manual provides essential information for the installation, operation, and maintenance of your Duravit Happy D.2 540mm white washdown rimless wall-mounted toilet. Please read these instructions carefully before installation and use to ensure proper function and longevity of the product. Retain this manual for future reference.

The Duravit Happy D.2 toilet features an elongated shape, a rimless design for enhanced hygiene, and a washdown flushing system. It is designed for wall-mounted installation, offering a modern and space-saving solution for your bathroom.

Safety Information

- **Professional Installation Recommended:** Due to the nature of wall-mounted fixtures, professional installation by a qualified plumber is highly recommended to ensure correct and secure mounting, as well as proper water connections.
- **Handle with Care:** Ceramic products are fragile. Handle the toilet with care to prevent chipping or breakage during transport and installation.
- **Water Supply:** Ensure the main water supply is turned off before beginning any installation or maintenance work.
- **Proper Sealing:** All connections must be properly sealed to prevent leaks.
- **Weight Limit:** Do not stand on the toilet. It is designed for seating purposes only.
- **Cleaning Agents:** Use only non-abrasive cleaning agents as specified in the maintenance section to avoid damaging the ceramic surface.

Package Contents

Please verify that all components are present and undamaged before proceeding with installation.

- Duravit Happy D.2 Wall-Mounted Toilet Bowl (Model: 2222090092)
- Durafix mounting hardware

- Installation instructions

Note: The tank (cistern) and toilet seat cover are **not included** and must be purchased separately. A compatible in-wall tank system is required for wall-mounted toilet installation.

Setup and Installation

Installation of a wall-mounted toilet requires specific plumbing knowledge and tools. If you are not experienced with such installations, it is strongly recommended to hire a certified professional.

Required Tools and Materials (Not Included):

- In-wall tank/carrier system (compatible with wall-mounted toilets)
- Toilet seat and cover
- Sealant (silicone)
- Measuring tape, level, pencil
- Wrenches, screwdrivers

Installation Steps:

1. **Prepare the In-Wall Carrier:** Install the in-wall tank/carrier system according to its manufacturer's instructions. Ensure it is securely fastened to the wall studs and leveled correctly. Connect the water supply and waste pipe to the carrier.
2. **Measure and Mark:** Using the provided technical drawing and the carrier system's specifications, measure and mark the positions for the mounting bolts and the waste/supply connections on the wall.
3. **Attach Mounting Rods:** Secure the threaded mounting rods from the in-wall carrier system.
4. **Connect Waste and Supply:** Attach the waste outlet and water supply pipes from the toilet bowl to the corresponding connections on the in-wall carrier. Ensure all seals are correctly seated.
5. **Mount the Toilet Bowl:** Carefully slide the toilet bowl onto the threaded mounting rods. The Durafix system facilitates a secure and concealed fastening. Tighten the nuts evenly until the toilet is firmly against the wall, but do not overtighten to avoid cracking the ceramic.
6. **Seal the Gaps:** Apply a bead of silicone sealant around the perimeter where the toilet meets the finished wall. This provides a watertight seal and a clean finish. Allow the sealant to cure completely before use.
7. **Install Toilet Seat:** Attach your chosen toilet seat and cover according to its manufacturer's instructions.
8. **Test Flush:** Turn on the main water supply, allow the tank to fill, and perform several test flushes to check for leaks and proper operation.

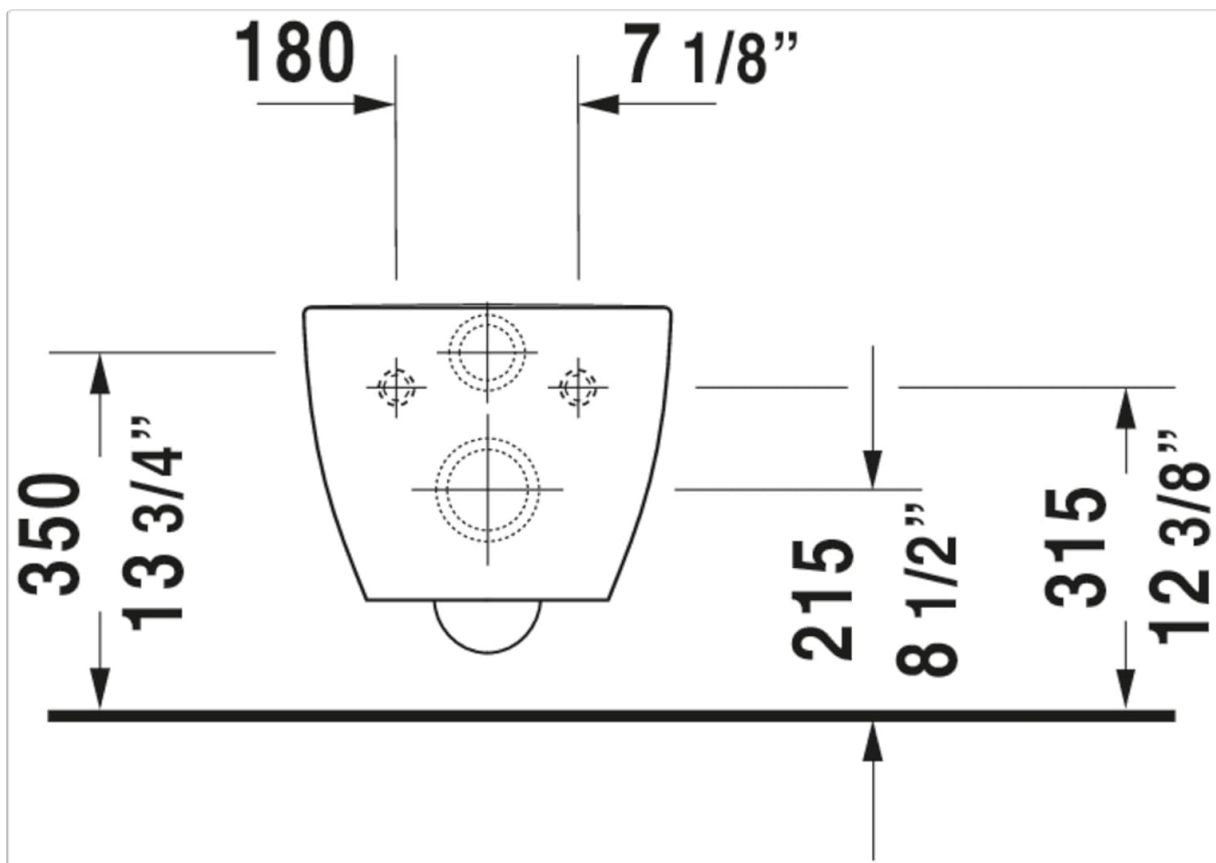


Image Description: A technical line drawing showing the top-down view of the Duravit Happy D.2 toilet bowl. Key dimensions are indicated in both millimeters (mm) and inches ("). For example, the width is shown as 180mm (7 1/8") and the depth from the wall to the front edge is 350mm (13 3/4"). This diagram is crucial for precise installation planning.



Image Description: This image displays the Duravit Happy D.2 wall-mounted toilet installed in a contemporary bathroom setting. The toilet is white and has a sleek, minimalist design. It is positioned next to a matching wall-mounted bidet, showcasing a cohesive bathroom aesthetic. The wall behind is tiled in a neutral tone, and a chrome towel ring is visible above the bidet.

Operating Instructions

The Duravit Happy D.2 toilet utilizes a washdown flushing system, designed for efficient waste removal.

- **Flushing:** To flush the toilet, activate the flush plate or button associated with your in-wall tank system. This model supports a dual flush mechanism, allowing you to choose between a full flush for solid waste and a partial flush for liquid waste, conserving water.
- **Rimless Design:** The rimless design ensures water is distributed evenly around the bowl for a thorough rinse, while also making cleaning easier.

Maintenance

Regular cleaning and proper care will maintain the appearance and functionality of your Duravit toilet.

Cleaning the Toilet Bowl:

- Use a soft cloth or sponge with a mild, non-abrasive bathroom cleaner.
- Avoid harsh chemicals, abrasive pads, or cleaners containing strong acids, alkalis, or bleach, as these can damage the ceramic glaze.
- For stubborn stains, allow the cleaner to sit for a short period before scrubbing gently.
- Rinse thoroughly with clean water after cleaning.

General Care:

- Periodically check all connections for leaks. Tighten if necessary, but do not overtighten.
- Ensure the toilet seat is properly aligned and secured.

Troubleshooting

Below are common issues and potential solutions. For complex problems, consult a professional plumber.

Problem	Possible Cause	Solution
Weak Flush	Low water level in tank, partially closed water supply valve, clogged rim jets (unlikely with rimless design but check for blockages).	Adjust water level in the in-wall tank, fully open the water supply valve, inspect for blockages.
Toilet Leaks	Loose connections, faulty seals, cracked ceramic.	Check and tighten all water connections. Inspect seals and replace if worn. If ceramic is cracked, the unit may need replacement.
Toilet Clogs Easily	Excessive waste, non-flushable items, partial blockage in drain pipe.	Use a plunger. Avoid flushing non-biodegradable items. If persistent, a plumber may need to clear the drain line.
Toilet Rocks/Moves	Loose mounting bolts, improper installation of in-wall carrier.	Ensure mounting bolts are securely tightened. If the in-wall carrier is unstable, professional re-installation may be required.

Specifications



Image Description: A clear, isolated image of the Duravit Happy D.2 wall-mounted toilet. The toilet is white, with a sleek, rectangular bowl and a matching closed seat. The design is modern and minimalist, highlighting its wall-mounted nature without visible plumbing.

- **Model:** 2222090092
- **Brand:** Duravit
- **Color:** White
- **Material:** Ceramic
- **Shape:** Elongated / Oval
- **Installation Type:** Wall Mounted
- **Product Dimensions (D x W x H):** 13.25" x 14.38" x 13.25" (approximate, refer to technical drawing for precise measurements)
- **Item Weight:** 59.1 pounds (approximate)
- **Flush Type:** Dual Flush Washdown
- **Water Consumption:** 1.6 Gallons per Flush (GPF)
- **Special Features:** Rimless, Durafix included, Eco Friendly
- **Tank and Seat Cover:** Not included

Warranty Information

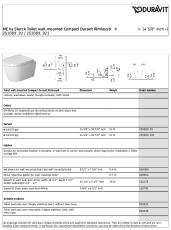
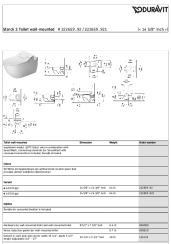
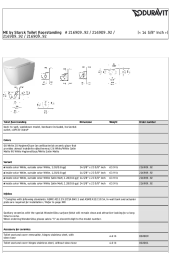
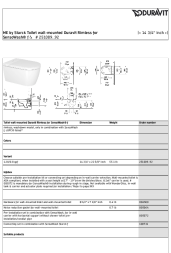
This Duravit product is covered by a **Limited Lifetime Warranty**. This warranty typically covers manufacturing defects in materials and workmanship under normal use and service. For specific terms, conditions, and claim procedures, please refer to the official warranty documentation provided with your purchase or contact Duravit customer service.

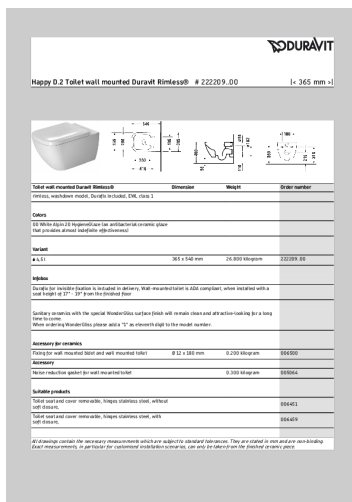
Support

For further assistance, technical support, or inquiries regarding your Duravit Happy D.2 toilet, please contact Duravit customer service. Contact information can typically be found on the official Duravit website or on your purchase documentation.

© 2023 Duravit. All rights reserved.

Related Documents

	<p>Duravit ME by Starck Wall-Mounted Compact Rimless Toilet - Product Specifications</p> <p>Detailed specifications and product information for the Duravit ME by Starck wall-mounted compact rimless toilet, including dimensions, variants, compatible accessories, and HygieneGlaze finish.</p>
	<p>Duravit Starck 3 Wall-Mounted Toilet: Specifications and Features</p> <p>Detailed specifications for the Duravit Starck 3 wall-mounted toilet, including dimensions, variants, order numbers, and compatible SensoWash shower-toilet seats. Features HygieneGlaze and cUPC listing.</p>
	<p>DURAVIT ME by Starck Floorstanding Toilet - Technical Specifications</p> <p>Detailed technical specifications for the DURAVIT ME by Starck floorstanding toilet, including dimensions, colors, variants, accessories, and compliance information. Features HygieneGlaze and WonderGliss finishes.</p>
	<p>Duravit ME by Starck Wall-Mounted Rimless Toilet with SensoWash® - Specifications and Features</p> <p>Detailed specifications, features, and compatibility information for the Duravit ME by Starck wall-mounted rimless toilet and compatible SensoWash® Starck f shower seats. Includes dimensions, order numbers, installation notes, and accessory details.</p>



[\[pdf\]](#) User Manual Specifications Accessories

Happy D.2 Toilet wall mounted Duravit Rimless # 222209..00 365 mm Toilet wall mounted Duravit Rimless rimless, washdown model, Durafix included, EWL class 1 Dimension Weight Order number Colors 00 White Alpin 20 HygieneGlaze an antibacterial ceramic glaze that provides almost indefinite...

Maximum Performance (MaP) of Toilet Fixtures Report

lang:en score:15 filesize: 1.18 M page_count: 81 document date: 2017-03-25