

Logitech M185

Logitech M185 Wireless Mouse: User Manual and Setup Guide

Model: M185 | Brand: Logitech

INTRODUCTION

This manual provides comprehensive instructions for the setup, operation, maintenance, and troubleshooting of your Logitech M185 Wireless Mouse. Designed for simplicity and reliability, the M185 offers plug-and-play wireless convenience with a comfortable, contoured design suitable for both right and left-handed users. Enjoy fast data transmission and virtually no delays or dropouts, along with a long-lasting battery life.

WHAT'S IN THE BOX

- Logitech M185 Wireless Mouse
- USB Receiver
- 1 AA Battery (Pre-installed)
- User Documentation

SETUP

1. **Insert Battery:** The M185 mouse comes with one AA battery pre-installed. To activate, open the battery compartment on the underside of the mouse and remove any protective pull-tab if present. Ensure the battery is correctly oriented.

Integrated receiver storage inside the mouse

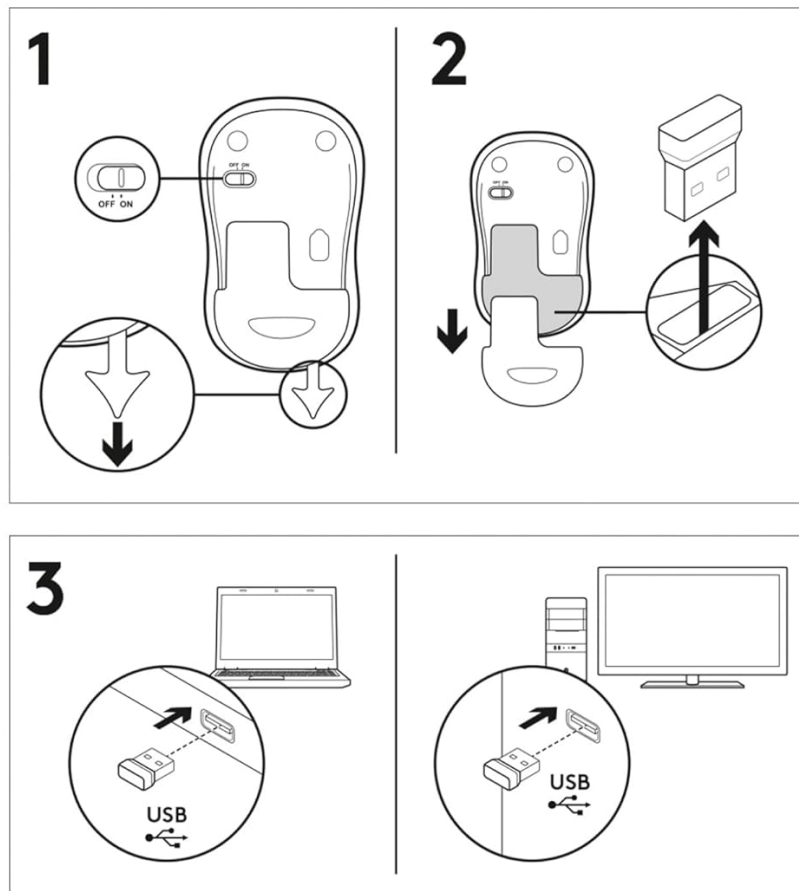


Image: Underside of the Logitech M185 mouse with the battery compartment open, revealing the pre-installed AA battery and the dedicated slot for the USB receiver.

2. **Connect USB Receiver:** Locate the tiny USB receiver stored inside the battery compartment of the mouse. Remove it and plug it into an available USB port on your computer (PC, Mac, or laptop).

Giving plastic a second life



77% recycled plastic



Carbon footprint:
3.97 kg CO₂e

Image: The Logitech M185 mouse positioned beside a laptop, illustrating the USB receiver plugged into one of the laptop's USB ports for wireless connectivity.

3. **Turn On Mouse:** Slide the On/Off switch located on the underside of the mouse to the "On" position.

Your browser does not support the video tag.

Video: A demonstration of turning on the Logitech M185 wireless mouse and connecting its USB receiver to a computer, highlighting the simple plug-and-play setup process.

4. **Automatic Connection:** Your computer should automatically detect and connect to the mouse. No additional software installation is typically required for basic functionality.

OPERATING INSTRUCTIONS

The Logitech M185 Wireless Mouse is designed for intuitive and comfortable use. Its ambidextrous, contoured shape fits well in either hand.

- **Left Click:** Press the left button for primary actions like selecting items or opening files.
- **Right Click:** Press the right button for secondary actions, typically opening context menus.
- **Scroll Wheel:** Use the scroll wheel located between the left and right buttons to navigate documents and web pages vertically. The scroll wheel also functions as a middle click button for some applications.
- **Optical Tracking:** The 1000 DPI optical tracking provides smooth and precise cursor control on most surfaces.

Work anywhere with portable mouse

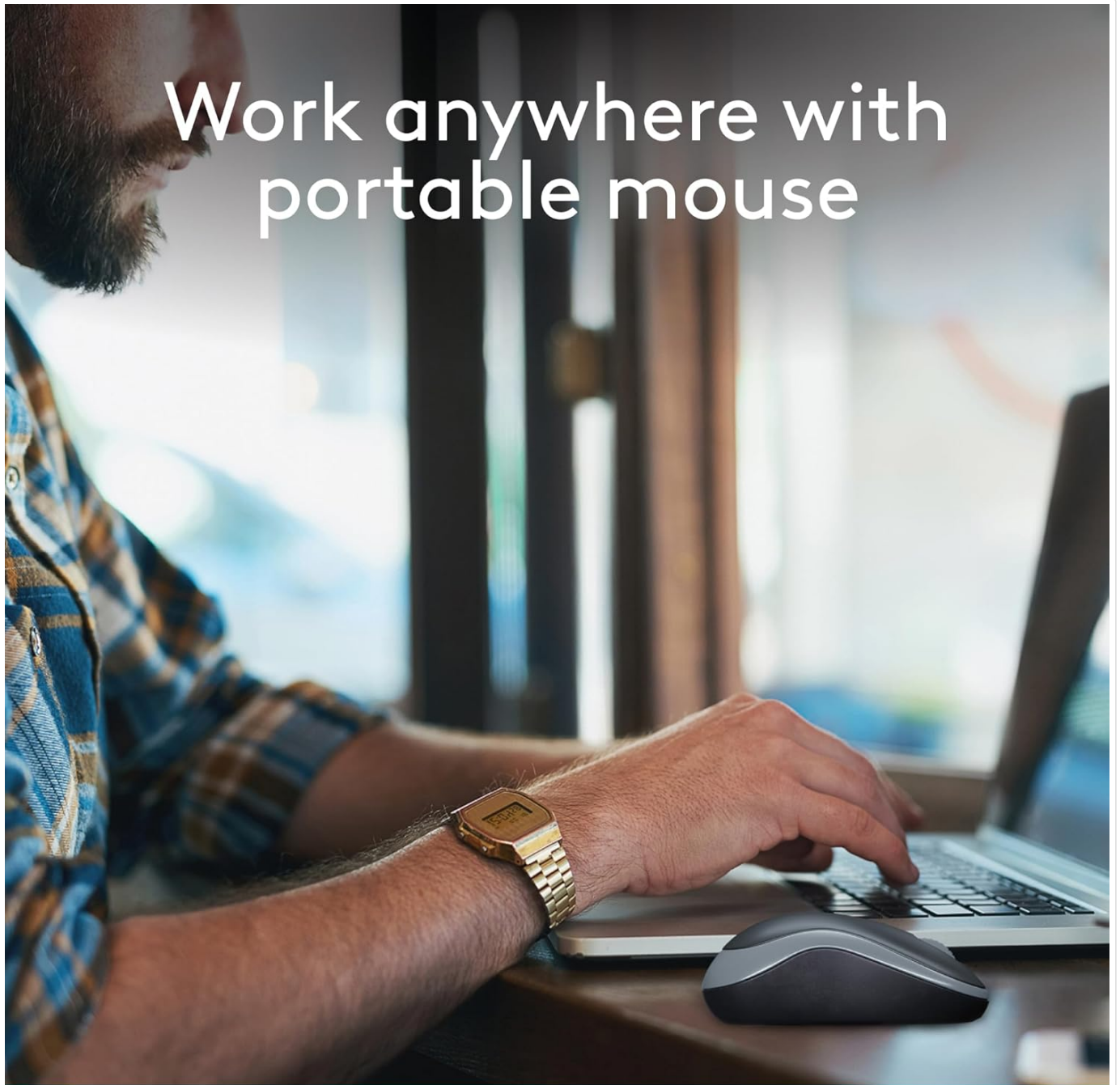


Image: A user's hand demonstrating the comfortable grip and ergonomic design of the Logitech M185 wireless mouse during use.

MAINTENANCE

- **Battery Life:** The M185 mouse boasts an impressive battery life of up to 12 months, thanks to its smart sleep mode function. Battery life may vary based on user and computing conditions.
- **Battery Replacement:** When the mouse performance degrades, replace the AA battery. Open the battery compartment on the underside, remove the old battery, and insert a new AA battery, ensuring correct polarity.
- **Cleaning:** To maintain optimal performance, periodically clean the optical sensor on the underside of the mouse with a soft, lint-free cloth. You may also gently wipe the exterior of the mouse with a damp cloth. Avoid using harsh chemicals.

TROUBLESHOOTING

If you encounter issues with your Logitech M185 Wireless Mouse, try the following steps:

1. **No Cursor Movement:**

- Ensure the mouse is turned on (check the On/Off switch on the underside).
- Check the battery. Replace it if necessary.
- Ensure the USB receiver is securely plugged into a working USB port on your computer. Try a different USB port.
- Restart your computer.

2. **Intermittent Connection:**

- Move the mouse closer to the USB receiver. The effective range is up to 33 feet (10 meters).
- Avoid placing the mouse or receiver near other wireless devices (e.g., Wi-Fi routers, cordless phones) that might cause interference.
- Try plugging the USB receiver into a different USB port, preferably one that is not next to other USB devices.

3. **Cursor Jumps or is Erratic:**

- Clean the optical sensor on the underside of the mouse.
- Ensure you are using the mouse on a suitable surface. Highly reflective or transparent surfaces may affect tracking. A mouse pad is recommended.

SPECIFICATIONS

Feature	Detail
Model Number	910-003888
Connectivity	2.4GHz Wireless (USB Receiver)
Tracking Technology	Optical (1000 DPI)
Battery Type	1 x AA Battery (included)
Battery Life	Up to 12 months
Compatibility	Windows 7, Vista, XP, Mac OS X, Linux
Dimensions (LxWxH)	3.9 x 2.36 x 1.54 inches (99 x 60 x 39 mm)
Weight (with batteries)	2.65 ounces (75.2 g)
Color	Black
Recycled Plastic Content	77% for black model
Carbon Footprint	3.97 kg CO2e



Image: A detailed diagram illustrating the physical dimensions (height, width, depth) and weight of the Logitech M185 wireless mouse.

WARRANTY AND SUPPORT

The Logitech M185 Wireless Mouse comes with a **three-year limited hardware warranty**. For further assistance, technical support, or warranty claims, please visit the official Logitech support website or contact their customer service. For more information, visit: [Logitech Support](#)