

Aircast AC141AB01-M-R

Aircast AirSport Ankle Support Brace Instruction Manual

Model: AC141AB01-M-R

1. INTRODUCTION

The Aircast AirSport Ankle Support Brace is designed to provide moderate support and compression for individuals recovering from Grade I or II ankle sprains, or for those seeking to prevent ankle sprains. It features air cell technology for cushioning and support, combined with a semi-rigid encased shell for stability and comfort. The brace incorporates an Anterior Talofibular (ATF) cross-strap and integral forefoot and shin wraps to provide additional ligament stabilization and compression. Its strong, coated fabric ensures durability, and the step-in style with automatic heel adjustment allows for easy application and quick adjustments. This universal design fits both left and right feet.

2. SAFETY INFORMATION

- Consult a healthcare professional before using this brace, especially if you have pre-existing medical conditions or severe injuries.
- Do not overtighten the straps, as this may restrict circulation.
- Discontinue use and consult a healthcare professional if you experience increased pain, numbness, tingling, or skin irritation while wearing the brace.
- This product is intended for external use only.
- Keep out of reach of children.

3. SETUP AND APPLICATION

Follow these steps to properly apply your Aircast AirSport Ankle Support Brace:

1. **Prepare Your Foot:** Ensure your foot is clean and dry. It is recommended to wear a sock for comfort and hygiene.
2. **Step-In Application:** Open all straps on the brace. Slide your foot into the brace, ensuring your heel is seated firmly in the heel cup and the brace's side supports align with your ankle bones. The brace is designed for a step-in application.
3. **Secure the Forefoot Wrap:** Wrap the forefoot strap around the front of your foot and secure it. This helps position the brace correctly.

4. **Adjust Heel:** The brace features an automatic heel adjustment. Ensure the heel is comfortably snug.
5. **Fasten Shin Wraps:** Secure the integral shin wraps around your lower leg.
6. **Apply ATF Cross-Strap:** Take the Anterior Talofibular (ATF) cross-strap and wrap it across the front of your ankle, securing it to the opposite side. This strap provides additional stabilization. Adjust for firm, comfortable support without restricting circulation.
7. **Final Adjustments:** Walk a few steps to ensure the brace feels comfortable and supportive. Readjust straps as necessary. The brace should feel snug but not painful or restrictive.



Image 1: The Aircast AirSport Ankle Support Brace correctly applied to a right foot, demonstrating the step-in design and strap placement.



Image 2: An athlete wearing the Aircast AirSport Ankle Support Brace during soccer, illustrating its use during physical activity.



Image 3: A softball player wearing the Aircast AirSport Ankle Support Brace, showing its compatibility with athletic footwear and active use.

4. OPERATING AND USAGE

The Aircast AirSport Ankle Support Brace is designed for continuous support during daily activities and sports. Its air cell technology and semi-rigid shell work together to provide dynamic compression and stability. The brace offers protection against both inversion and eversion movements of the ankle.

- Wear the brace over a sock to prevent direct skin contact and enhance comfort.

- Ensure all straps are securely fastened but not overly tight. You should be able to comfortably move your foot and ankle within the brace.
- Periodically check the fit and adjust straps as needed, especially during prolonged activity, to maintain optimal support and comfort.
- The brace is suitable for use with most athletic and casual footwear.

5. MAINTENANCE AND CARE

Proper care will extend the life of your Aircast AirSport Ankle Support Brace:

- **Cleaning:** Hand wash the brace in cold water with mild soap. Do not use bleach or harsh detergents.
- **Drying:** Air dry thoroughly. Do not machine wash or tumble dry, as this can damage the materials and air cells.
- **Storage:** Store the brace in a cool, dry place away from direct sunlight when not in use. Ensure all straps are fastened to prevent the hook-and-loop fasteners from attracting lint or debris.
- **Inspection:** Regularly inspect the brace for any signs of wear, tear, or damage to the straps, fabric, or air cells. Discontinue use if significant damage is observed.

6. TROUBLESHOOTING

Issue	Possible Cause / Solution
Brace feels too loose or not supportive enough.	Ensure all straps, especially the ATF cross-strap and shin wraps, are tightened appropriately. Verify that the brace size is correct for your foot. Refer to sizing guidelines if available. Re-adjust the heel cup for a snug fit.
Brace feels too tight or causes discomfort.	Loosen the straps slightly until comfortable, ensuring support is maintained. Check for any folds or bunched material under the brace. Ensure you are wearing a sock to prevent skin irritation.
Hook-and-loop fasteners (Velcro) are not holding well.	Clean the hook-and-loop fasteners to remove lint, threads, or debris that may be interfering with adhesion. Ensure straps are fully engaged when fastened.

7. SPECIFICATIONS

- **Brand:** Aircast
- **Model Number:** AC141AB01-M-R
- **Product Dimensions:** 11.25 x 2 x 4 inches
- **Item Weight:** 7.2 ounces
- **Size:** Medium (Pack of 1)
- **Specific Uses:** Sprain
- **Body Part:** Ankle

- **Age Range:** Adult
- **Manufacturer:** DONJOY





8. WARRANTY INFORMATION

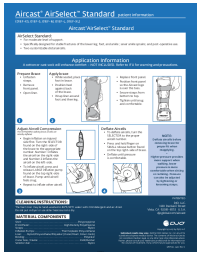
This Aircast product is manufactured by DONJOY. For specific warranty terms and conditions, please refer to the documentation included with your purchase or contact DONJOY customer service directly. Warranty coverage typically addresses manufacturing defects and material flaws under normal use.

9. CUSTOMER SUPPORT

For further assistance, product inquiries, or to report any issues, please contact Aircast customer support. You can typically find contact information on the manufacturer's official website or through the retailer where the product was purchased.

Related Documents - AC141AB01-M-R

	<p>Aircast AirSelect Elite Walking Brace User Manual</p> <p>Comprehensive instructions for the Aircast AirSelect Elite walking brace, detailing usage, safety, and application for lower leg, ankle, and foot support and immobilization.</p>
	<p>ActyFoot™ Patient Application Instructions Aircast</p> <p>Detailed patient application instructions for the Aircast ActyFoot™ ankle brace, including sizing, fitting guides with and without the lateral stay, indications, warnings, and cleaning information.</p>
	<p>Aircast AirSelect Standard Walking Brace Instructions</p> <p>Instructions and information for the Aircast AirSelect Standard walking brace, including preparation, application, compression adjustment, deflation, and cleaning.</p>
	<p>Aircast A60 Ankle Support: Instructions and User Guide</p> <p>Detailed instructions and user guide for the Aircast A60 Ankle Support by DJO, LLC. Learn about intended use, application, warnings, and care for ankle support.</p>



[Aircast AirSelect Standard Walking Brace: Patient Information and Application Guide](#)

Detailed patient information and application guide for the Aircast AirSelect Standard walking brace. Learn how to prepare, apply, adjust compression, and deflate the brace. Includes cleaning instructions and material components.



[AIRCAST v3.1.1 User Manual: Radio Automation Software Guide](#)

Comprehensive user manual for AIRCAST v3.1.1, detailing installation, configuration, and operational features of this professional radio automation software. Learn to manage audio, schedule events, and customize your broadcast workflow.