

[Manuals.plus](#) /

> [NETGEAR](#) /

> NETGEAR 28-Port PoE Gigabit/10G Stackable Smart Switch (GS728TXP) - Managed, with 24 x PoE+ @ 195W, 2 x 10G Copper and 2 x 10G SFP+, Desktop or Rackmount, and Limited Lifetime Protection

## NETGEAR GS728TXP-100NES

# NETGEAR 28-Port PoE Gigabit/10G Stackable Smart Switch

Model: GS728TXP-100NES

Brand: NETGEAR

## INTRODUCTION

---

This manual provides comprehensive instructions for the installation, operation, and maintenance of your NETGEAR GS728TXP Smart Managed Pro Power over Ethernet (PoE) Switch. This stackable switch is designed for both desktop and rackmount environments, offering 24 Gigabit Ethernet ports with PoE+ capabilities (195W total budget), along with 2 x 10Gb Ethernet ports and 2 x 10G SFP+ ports for high-speed connectivity. Please read this manual thoroughly before setting up your device to ensure optimal performance and longevity.

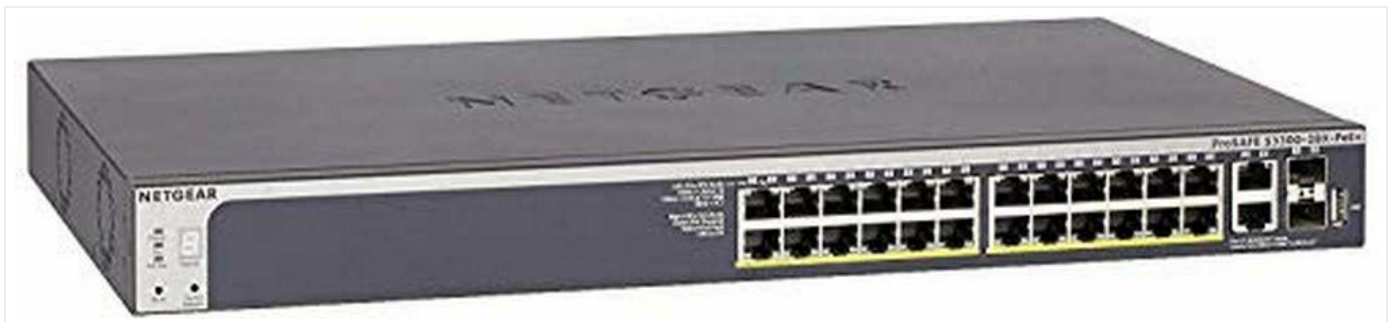


Figure 1: Front view of the NETGEAR GS728TXP Switch, showing the 24 Gigabit Ethernet ports and 4 10G uplink ports.

## SETUP

---

### 1. Unpacking and Inspection

Carefully remove all components from the packaging. Verify that all items listed in the packing list are present and undamaged. If any items are missing or damaged, contact NETGEAR support immediately.

### 2. Physical Installation

The GS728TXP switch can be installed on a desktop or mounted in a standard 19-inch equipment rack. All necessary

mounting hardware is included in the box.

- **Desktop Placement:** Ensure the switch is placed on a flat, stable surface with adequate ventilation. Do not block the ventilation holes.
- **Rackmount Placement:** Use the provided rackmount brackets and screws to secure the switch into a standard equipment rack. Ensure proper airflow within the rack to prevent overheating.

# 28 Port Gigabit/10G Stackable Smart Switch with PoE+ [ GS728TXP ]



- 24 x 1G and 2 x 10G Ethernet Ports
- 24 x PoE+ Ports (195W Total Budget)
- 2 x 10G SFP+ Ports
- Desktop or Rack Mount (hardware included)
- H x W x D: 1.7 x 17.3 x 10.1 inches

**NETGEAR**  
BUSINESS

Figure 2: Front and rear views of the GS728TXP switch, highlighting port layout and power input. Dimensions are also shown for rack planning.

### 3. Connecting Power

Connect the provided power cord to the AC power inlet on the rear of the switch and then to a grounded electrical outlet. The switch will power on automatically.

### 4. Connecting Network Devices

- **Gigabit Ethernet Ports (1-24):** Use standard Ethernet cables (Cat5e or higher) to connect your network devices (computers, servers, access points, IP cameras, VoIP phones) to these ports. These ports support Power over

Ethernet Plus (PoE+) to power compatible devices directly through the Ethernet cable.

- **10G Copper Ports (25-26):** These ports provide high-speed 10 Gigabit Ethernet connectivity for devices requiring higher bandwidth, such as servers or network storage.
- **10G SFP+ Ports (27-28):** These ports are for fiber optic connections using SFP+ transceivers, ideal for long-distance or high-bandwidth uplinks to other switches or network infrastructure.

## 5. Initial Configuration

The GS728TXP is a Smart Managed Pro Switch, meaning it offers advanced configuration options via a web-based graphical user interface (GUI). To access the GUI:

1. Connect a computer to any of the switch's Ethernet ports.
2. Ensure your computer is configured to obtain an IP address automatically (DHCP).
3. Open a web browser and enter the default IP address of the switch (refer to the quick start guide or product documentation for the default IP, typically 192.168.0.239 or similar).
4. Log in using the default username and password (usually 'admin' and 'password'). You will be prompted to change the password upon first login for security.

For detailed configuration steps, refer to the comprehensive User Manual available on the NETGEAR support website.

## OPERATING THE SWITCH

---

### Key Features and Capabilities

- **24 Gigabit and 2 10G Ethernet ports:** Provides ample connectivity for various network devices.
- **24 PoE+ ports with 195W total power budget:** Powers devices like IP cameras, VoIP phones, and wireless access points directly through the Ethernet cable, simplifying deployment and reducing cabling.
- **2 x 10G SFP+ ports:** Offers high-speed fiber optic uplinks for network expansion and backbone connections.
- **Stacking Connectivity:** Supports physical stacking, allowing multiple switches to be managed as a single unit, simplifying network administration and increasing port density.
- **Smart Software with Easy-to-Use Interface:** Provides managed control for secure setup, access, and SNMP (NMS 300) management.
- **Energy Efficient Design:** Compliant with IEEE802.3az for reduced power consumption.
- **Quiet Operation:** Designed for minimal noise, suitable for various environments.

### Understanding PoE (Power over Ethernet)

PoE technology allows network cables to carry electrical power. This eliminates the need for separate power cables for devices like IP cameras, VoIP phones, and wireless access points, simplifying installation and reducing infrastructure costs. The GS728TXP supports PoE+ (802.3at), providing up to 30W per port, with a total power budget of 195W across all 24 PoE+ ports.

Your browser does not support the video tag.

Video 1: An animated overview of Power over Ethernet (PoE) technology, demonstrating how PoE switches simplify network deployments by providing both data and power over a single Ethernet cable to compatible devices like IP cameras and VoIP phones.

# Ensure Adequate Power for Today & Tomorrow










Powered Devices		PoE Up to 15W per port	PoE+ Up to 30W per port	PoE++ Up to 60W per port
WIFI ACCESS POINT		✓	✓	✓
BASIC CAMERAS		✓	✓	✓
VOIP PHONE		✓	✓	✓
WIFI 6 (AX) ACCESS POINT			✓	✓
HD SECURITY			✓	✓
VIDEO PHONE			✓	✓
DIGITAL SIGNAGE				✓
POINT-OF-SALE SYSTEM				✓
SMART BUILDING LIGHTING				✓

Figure 3: Power over Ethernet (PoE) capabilities table, illustrating power delivery for different device types (e.g., WiFi Access Points, Cameras, VoIP Phones) across PoE, PoE+, and PoE++ standards.

## Smart Software Interface

The web-based management interface provides extensive control over network settings. Key functionalities include:

- **Advanced VLANs:** Network segmentation controls for improved security and traffic management.
- **Advanced QoS (Quality of Service):** Optimizes VoIP and network video performance by prioritizing critical traffic.
- **Advanced PoE Control:** Per-port power management for efficient power allocation to connected devices.
- **IGMP & Multicast:** Efficiently manages video streams and multicast traffic.
- **Advanced Security:** Features like Access Control Lists (ACLs), Auto Denial of Service (DoS), and Link Aggregation Control Protocol (LACP) for robust network protection.
- **Priority Settings per Port:** Allows for fine-tuning of VoIP, rate limiting, and VLAN settings on individual ports.
- **Spanning Tree Protocol (STP):** Ensures network stability with failover links and interoperability.

# Smart Switches Software for Local Configuration & Control

**NETGEAR**

16-Port Gigabit ProSAFE Plus Switch



System	VLAN	QoS		
Management	Maintenance	Monitoring	MultiCast	LAG

Apply

<b>Switch Information</b>	Switch Information		Ⓞ
• Status	Product Name	GS116Ev2	
• Loop Detection	Switch Name	<input type="text" value="111"/>	
	MAC Address	00-18-e7-86-16-58	
	Firmware Version	2.0.0.26	

- **Advanced VLANs** - network segmentation controls
- **Advanced QoS** - optimizes VoIP & network video performance
- **Advanced PoE Control** - per-port power management
- **IGMP & Multicast** - video streams & multicast traffic
- **Advanced Security** - ACLs, Auto Denial of Service, and LACP
- **Priority Settings per Port** - VoIP, rate limiting, and VLANs
- **Spanning Tree Protocol** - with failover links & interoperability

Figure 4: Screenshot of the NETGEAR Smart Switch software interface, showing various configuration tabs like System, VLAN, QoS, and LAG, with detailed switch information.

# NETGEAR Switch Management Levels

Key Features	Plus Management	Smart Management	Smart + Insight Remote Management
MANAGEMENT LAYER	L2	L2/L2+/L3 Lite	L2+/L3
NETWORK CONTROL Basic VLAN, QoS, IGMP, Link Aggregation	✓	✓	✓
NETWORK SECURITY Storm Control, Auto-DoS	✓	✓	✓
ADVANCED VLAN & QoS Such as MAC, Protocol, Voice, Auto-Voice, Auto-Video LAN		✓	✓
ADVANCED SECURITY		✓	✓
L2+ STATIC ROUTING, IPV6 SUPPORT		✓	✓
REMOTE MONITORING & MANAGEMENT THROUGH INSIGHT APP OR CLOUD PORTAL			✓

Figure 5: Comparison table of NETGEAR Switch Management Levels (Plus, Smart, Smart + Insight Remote Management), detailing features like network control, security, and remote monitoring.

## MAINTENANCE

### Firmware Updates

Regularly check the NETGEAR support website for the latest firmware updates. Keeping your switch's firmware up-to-date ensures optimal performance, security, and access to new features. Firmware updates can also resolve known issues, including those related to stacking functionality as noted by some users.

### Cleaning

To maintain proper airflow and prevent dust buildup, periodically clean the exterior of the switch with a soft, dry cloth. Ensure the ventilation holes are clear of obstructions. Do not use liquid or aerosol cleaners.

### Environmental Considerations

Ensure the switch operates within its specified temperature and humidity ranges. Avoid placing the switch in direct sunlight, near heat sources, or in areas with excessive dust or moisture.

## TROUBLESHOOTING

---

### Common Issues and Solutions

- **No Power:**
  - Verify the power cord is securely connected to the switch and a working electrical outlet.
  - Check the power outlet with another device.
- **No Link Light on Port:**
  - Ensure the Ethernet cable is properly connected at both ends.
  - Try a different Ethernet cable.
  - Verify the connected device is powered on and functioning correctly.
- **PoE Device Not Powering On:**
  - Check if the device is PoE compatible (802.3af or 802.3at).
  - Ensure the switch's total PoE budget (195W) is not exceeded.
  - Try connecting the device to a different PoE+ port.
- **Cannot Access Web Interface:**
  - Verify your computer's IP address is in the same subnet as the switch, or configured for DHCP.
  - Ensure you are using the correct IP address for the switch.
  - Try clearing your browser's cache or using a different browser.
  - If the password is forgotten, a factory reset may be necessary (refer to the full user manual for reset procedures).

### LED Indicators

The front panel LEDs provide status information:

- **Power LED:** Indicates power status.
- **Link/Activity LEDs (per port):** Indicates network activity and connection status.
- **PoE Max LED:** Illuminates when the total PoE power budget is nearing its limit.
- **Fan Status LED:** Indicates the status of the internal cooling fan.

Refer to the full user manual for a detailed explanation of each LED's behavior.

## SPECIFICATIONS

---

Feature	Description
Model Number	GS728TXP-100NES
Ports	24 x Gigabit Ethernet (PoE+), 2 x 10G Copper, 2 x 10G SFP+
PoE+ Budget	195W

Feature	Description
Dimensions (H x W x D)	3.54 x 22.44 x 13.74 inches (approx. 90 x 570 x 349 mm)
Weight	8.31 Pounds (approx. 3.77 kg)
Placement	Desktop or Rackmount
Manufacturer	Netgear
Energy Efficiency	IEEE802.3az compliant

## WARRANTY AND SUPPORT

---

### Warranty Information

The NETGEAR GS728TXP Smart Managed Pro Switch comes with a **Limited Lifetime Hardware Warranty**. This warranty covers defects in materials and workmanship under normal use. For specific terms and conditions, please refer to the warranty documentation included with your product or visit the official NETGEAR website.

### Technical Support

NETGEAR offers comprehensive support for its products, including:

- **Next Business Day Replacement:** For eligible hardware failures, a replacement unit can be shipped the next business day.
- **24/7 Chat with a NETGEAR Expert:** Access to technical assistance around the clock.
- **Online Resources:** Visit the official NETGEAR support website for user manuals, FAQs, firmware downloads, and community forums.

For the most up-to-date support information and contact methods, please visit the official NETGEAR support portal:

[www.netgear.com/support/](http://www.netgear.com/support/)

