

Manuals.plus /

- › Avantree /
- › Avantree Lock Wireless Audio Transmitter and Receiver Set User Manual

Avantree BTTC-200L-Q-TTN-DB

Avantree Lock Wireless Audio Transmitter and Receiver Set

Model: BTTC-200L-Q-TTN-DB

INTRODUCTION

The Avantree Lock Wireless Audio Transmitter and Receiver Set provides a seamless solution for converting wired audio devices into wireless ones. This pre-paired set utilizes aptX Low Latency technology to ensure minimal audio delay, making it ideal for watching TV, movies, or connecting audio equipment without the hassle of cables.

WHAT'S IN THE BOX

What`s in the box?



- 1.LOCK TX
- 2.LOCK RX
- 3.3.5mm audio cable
- 4.3.5mm to 3.5mm jack
- 5.3.5mm female to RCA male cable
- 6.1 USB to 2 Micro USB charging cable

Image: All components included in the Avantree Lock package, neatly arranged.

- 1 set Avantree Lock (TX + RX)
- 1 pc 3.5mm audio cable
- 1 pc RCA audio cable
- 1 pc 3.5mm audio connector
- 1 pc USB charging cable
- 1 pc user manual
- 1 pc quick user guide
- 1 pc warranty card

PRODUCT OVERVIEW



Image: The Avantree Lock Transmitter (TX) and Receiver (RX) units, showcasing their compact design.

The Avantree Lock set consists of two compact units: a Transmitter (TX) and a Receiver (RX). Both units are designed for ease of use and portability.

TX (Transmitter) Unit

- **TX Button:** Used for re-pairing if connection is lost.
- **On/Off Switch:** Powers the unit on or off.
- **3.5mm Audio Input:** Connects to audio source (TV, PC, etc.).
- **Micro USB Port:** For charging the unit.
- **LED Indicator:** Shows power and connection status.

RX (Receiver) Unit

- **RX Button:** Used for re-pairing if connection is lost.
- **On/Off Switch:** Powers the unit on or off.
- **3.5mm Audio Output:** Connects to wired headphones or speakers.
- **Micro USB Port:** For charging the unit.
- **LED Indicator:** Shows power and connection status.

SETUP AND INITIAL USE

The Avantree Lock set comes pre-paired for immediate use. Follow these steps for initial setup:

1. **Charge Both Units:** Use the provided USB charging cable to fully charge both the TX and RX units before first use. The cable allows simultaneous charging of both units.
2. **Power On:** Slide the ON/OFF switch on both the TX and RX units to the 'ON' position. The LED indicators will light up, and the units will automatically connect to each other.
3. **Connect Transmitter (TX):** Connect the TX unit to your audio source (e.g., TV, PC, AV Receiver) using the appropriate audio cable (3.5mm AUX or RCA).

Bluetooth Transmitter & Receiver Set

Bluetooth-enable your wired headphones, speakers and Transmitter devices (TV, PC, iPod, Micphone)

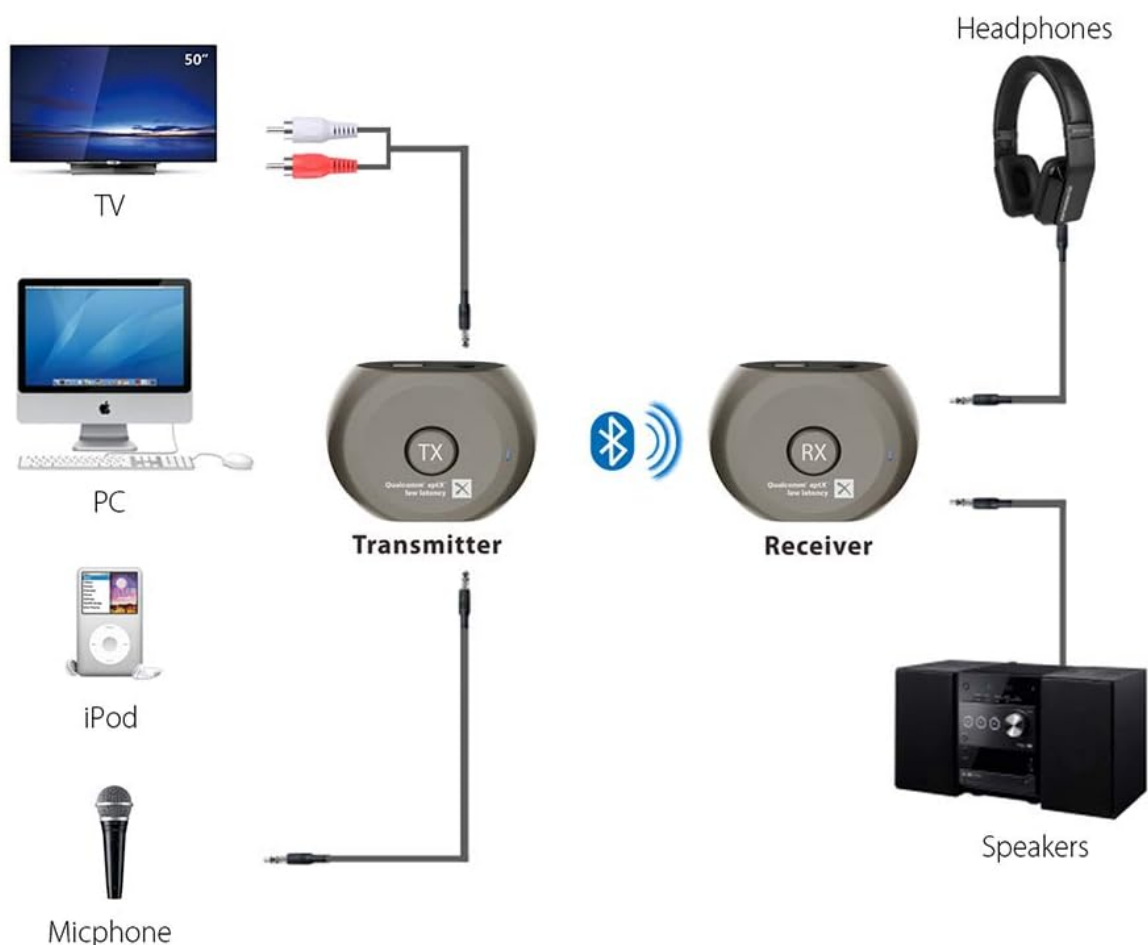


Image: Connection diagram illustrating the versatility of the Avantree Lock for different audio setups.

4. **Connect Receiver (RX):** Connect your wired headphones or speakers to the RX unit using the 3.5mm audio cable.
5. **Enjoy Audio:** Once both units are connected and powered on, audio from your source will be wirelessly transmitted to your connected headphones or speakers.

OPERATING MODES AND USAGE SCENARIOS

1. Wireless TV/PC Audio to Wired Headphones

Connect the TX unit to your TV or PC's audio output (3.5mm or RCA). Connect your wired headphones to the RX unit. Enjoy lag-free audio from your TV/PC directly to your headphones.

Lag-free Watching TV / Video

No audio delay can be only achieved when using them **AS A SET**



Image: User enjoying TV audio with wired headphones connected to the Avantree Lock Receiver, highlighting the low latency feature.

2. Bluetooth-Enable Wired Speakers/Headphones

Connect the RX unit to your wired speakers or headphones. Pair your Bluetooth-enabled phone, tablet, or PC with the RX unit. This allows you to stream audio from your mobile device to your traditional audio equipment.

Plug and Play

Pre-paired set, no need to pair



Image: The Avantree Lock Receiver connected to a speaker, demonstrating its ability to make wired speakers Bluetooth-enabled for streaming from a phone.

3. Video Recording with Wireless Microphone

For video recording, connect your microphone to the TX unit and the RX unit to your camcorder. The low latency ensures that audio and video remain synchronized.

4. Bluetooth Repeater/Booster

Extend the range of your Bluetooth audio. Connect your Bluetooth-enabled phone/PC/tablet to the RX unit. Connect the TX unit to Bluetooth headphones or speakers. Then, use a 3.5mm cable to connect the RX unit's output to the TX unit's input. This creates a relay, extending the effective range of your audio streaming throughout your home.

Free Combination

Use LOCK TX / RX seperately with other devices



Image: The Avantree Lock units shown in a "Free Combination" setup, illustrating their independent use as a transmitter or receiver with other devices.

CHARGING AND BATTERY LIFE

Both the TX and RX units feature built-in rechargeable Li-ion batteries. Use the provided 1-to-2 USB charging cable to charge both units simultaneously from any standard USB power source (e.g., computer USB port, USB wall adapter).

Portable Use with Built-in Battery

Play time up to 6 hours, ideal use for outdoor or indoor



Image: The Avantree Lock units highlighting their portable use and extended battery life.

- **TX Unit Working Time:** Up to 6 hours
- **RX Unit Working Time:** Up to 8.5 hours
- **Charging Time:** Approximately 2-3 hours
- Units can be used while connected to USB power for continuous operation.

SPECIFICATIONS

Feature	Specification
TX Bluetooth Version	BT 3.0
RX Bluetooth Version	BT 4.1
Support Profiles	A2DP, AVRCP (RX only)
Audio Codec	aptX Low Latency, aptX, SBC, Fast Stream (TX only)
Operational Range	Class 2, 10 meters (33 feet)
Battery Type	Built-in rechargeable Li-ion battery (Non-replaceable)
TX Unit Working Time	Up to 6 hours
RX Unit Working Time	Up to 8.5 hours
Charging Time	Around 2-3 hours
Charging Input Voltage	DC 5V
Product Dimensions	1.97 x 0.51 x 1.46 inches
Item Weight	Approx. 20g (each unit)

TROUBLESHOOTING

- **No Audio:**

- Ensure both TX and RX units are powered on and fully charged.
- Verify that the audio cables are securely connected to the correct input/output ports on both the Avantree Lock units and your audio devices.
- Check the volume levels on your audio source and connected headphones/speakers.
- If units become unpaired, press the TX/RX button on each unit to re-initiate pairing.

- **Audio Delay (Lip-Sync Issues):**

- Ensure both the TX and RX units are being used together as a set, as aptX Low Latency is most effective when both ends support it.
- Confirm that your audio source is not introducing its own delay.

- **Short Wireless Range:**

- Ensure there are no significant obstructions (walls, large metal objects) between the TX and RX units.
- Avoid placing units near other wireless devices (Wi-Fi routers, cordless phones) that may cause interference.

SAFETY INFORMATION

Please read and follow these safety guidelines to ensure safe operation and prolong the life of your Avantree Lock:

- **Battery Safety:** Do not dispose of batteries in fire or water. Keep away from extreme temperatures and humidity.
- **Bluetooth Interference:** Bluetooth devices may interfere with other wireless devices. Follow instructions for proper use and disposal.
- Do not disassemble, modify, or attempt to repair the device yourself. This may void the warranty and pose safety risks.
- Keep the device away from liquids and excessive moisture.
- Use only the provided or approved charging cables and adapters.

WARRANTY AND SUPPORT

Avantree products are guaranteed to be free from defects in materials or workmanship for 12-24 months (depends on product and region) from the date of purchase from your Avantree authorized reseller. For further support, troubleshooting, or warranty claims, please visit the official Avantree website or contact their customer service:

- **Official Website:** www.avantree.com
- Refer to the included Quick User Guide or User Manual for specific contact information and FAQs.