

## Origami R5-18W

# Origami R5 Foldable 4-Tier Garage Shelving

Model: R5-18W | Brand: Origami

### 1. INTRODUCTION AND OVERVIEW

Thank you for choosing the Origami R5 Foldable 4-Tier Garage Shelving. This heavy-duty metal storage rack is engineered for convenience and durability, offering a robust solution for your organizational needs. Its innovative design allows for rapid setup and collapse, requiring no tools or complex assembly. The unit is equipped with professional-grade caster wheels, providing both stability and mobility.

This manual provides essential information to ensure safe and effective use of your shelving unit.



Image: The Origami R5 4-Tier Foldable Shelving Unit, showcasing its assembled form with items stored on its shelves, highlighting its practical use.

## 2. SAFETY GUIDELINES

Adhering to these safety guidelines is crucial for preventing injury and damage to the shelving unit:

- Always ensure the storage rack is placed on a flat, stable surface to prevent tipping.
- Do not exceed the maximum weight capacity of 250 lbs. per shelf (without wheels) or 75 lbs. per shelf (with wheels).
- For garages or areas with uneven floors, use the smart-lock function on the caster wheels to secure the rack in place.
- Keep the rack away from high-traffic areas or areas where it could be bumped or knocked over.

- Inspect the rack regularly for any signs of wear, damage, or instability.
- Always supervise children around the rack to prevent them from climbing or playing with it.
- Use caution when moving the rack, as the heavy-duty commercial grade powder-coated steel may cause injury if mishandled.

### 3. PACKAGE CONTENTS

Your Origami R5 Foldable 4-Tier Garage Shelving unit comes 100% pre-assembled and requires no additional tools for setup. The package includes:

- 1 x Origami R5 Foldable 4-Tier Shelving Unit
- 4 x Professional Grade Caster Wheels (pre-attached)

### 4. SETUP AND ASSEMBLY INSTRUCTIONS

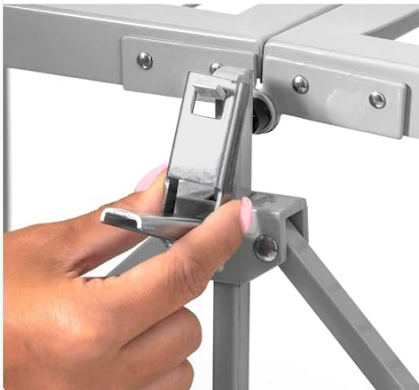
The Origami R5 shelving unit is designed for effortless setup, unfolding in seconds without the need for any tools or complicated assembly steps. Simply follow these instructions:

1. Carefully remove the folded shelving unit from its packaging.
2. Stand the unit upright. The caster wheels are pre-attached and will allow for easy positioning.
3. Gently pull the sides of the unit apart to begin unfolding. The shelves will naturally fall into place.
4. Once fully extended, locate the top shelf and the locking mechanism on the side. Hook the latch over the designated pin and press down firmly until it locks securely into place. This ensures the unit is stable and ready for use.



# Latch Shelf in **3** Easy Steps

**Hook it Over**



**Press Down**



**Locked**



Image: Step-by-step visual guide illustrating the simple unfolding and locking process of the shelving unit.

# Customers' Voice



Verified Purchase

"Highest quality metal shelving!  
Solid, easy to move and takes  
two min to assemble!"



Verified Purchase

"Click, click, BOOM - A shelf!"



Verified Purchase

"Super Sturdy, rolls anywhere."

Image: Detailed view of the latching mechanism, demonstrating how to secure the shelves in place.

Your browser does not support the video tag.

Video: An official product video demonstrating the quick and easy unfolding process of the Origami R5 4-Tier Shelving Unit, highlighting its pre-assembled nature and tool-free setup.

## 5. OPERATING INSTRUCTIONS (USAGE)

Your Origami R5 shelving unit is versatile and can be used in various environments for different storage needs:

- **Loading:** Distribute weight evenly across the shelves. Ensure not to exceed the maximum weight capacity per shelf (250 lbs. without wheels, 75 lbs. with wheels). The total weight capacity for the entire unit is up to 1000 lbs. without wheels, or 300 lbs. with wheels.
- **Mobility:** The professional-grade caster wheels allow for easy movement of the loaded or unloaded unit.
- **Securing:** To prevent unintended movement, engage the smart-lock function on the caster wheels once the unit is in its desired location.
- **Storage:** When not in use, the unit can be easily folded flat for compact storage. Simply disengage the top latch, and gently push the sides together until the unit collapses.



# Easy Assembling

Easy to unfold and fold when not in use

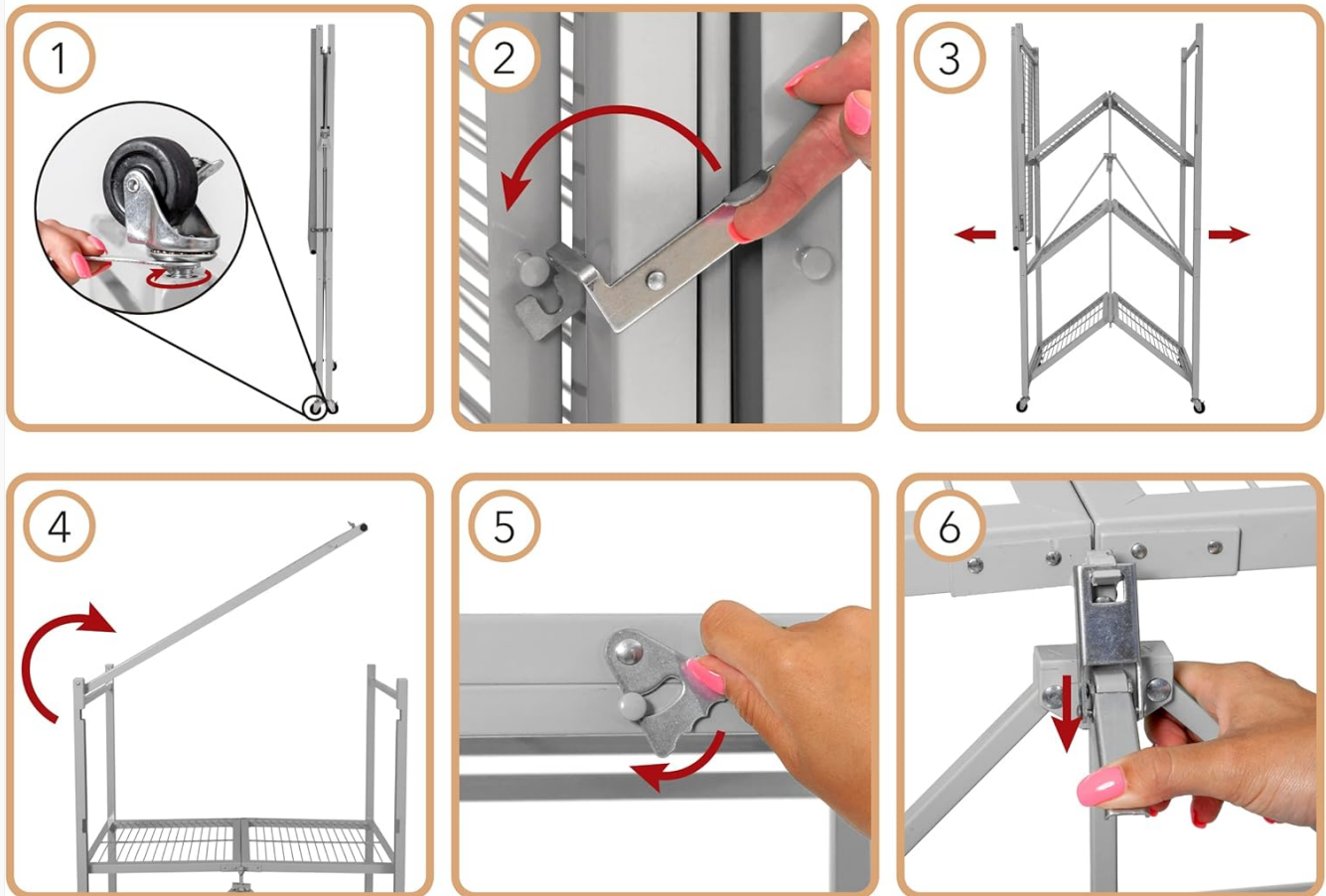


Image: The shelving unit shown in its folded configuration, demonstrating its space-saving design for storage when not in use.

## 6. MAINTENANCE AND CARE

Proper maintenance will ensure the longevity and continued performance of your Origami R5 shelving unit:

- **Cleaning:** Wipe the unit with a dry cloth to remove dust and debris. Avoid using harsh chemicals or abrasive cleaners, which may damage the powder-coated finish.
- **Inspection:** Periodically inspect all latches, hinges, and wheels for proper function and any signs of wear or damage. Ensure all connections are secure.
- **Lubrication:** If the wheels or folding mechanisms become stiff, a small amount of silicone-based lubricant can be applied to the moving parts.

## 7. TROUBLESHOOTING

If you encounter any issues with your Origami R5 shelving unit, please refer to the following common solutions:

- **Unit feels wobbly:**
  - Ensure the unit is placed on a completely flat and level surface.
  - Verify that the top latch mechanism is fully engaged and locked.

- Check that all four caster wheels are making firm contact with the ground.
- **Difficulty folding/unfolding:**
  - Ensure the top latch is fully disengaged before attempting to fold.
  - Check for any obstructions or items on the shelves that might be preventing smooth movement.
  - Apply a small amount of lubricant to the folding joints if they are stiff.
- **Wheels not rolling smoothly or locking:**
  - Clear any debris (hair, lint) from around the wheel axles.
  - Ensure the locking levers are fully engaged or disengaged as intended.

If the issue persists after following these steps, please contact Origami customer support for further assistance.

## 8. SPECIFICATIONS

Feature	Detail
Model Number	R5-18W
Overall Dimensions (Assembled)	36" W x 21" D x 60" H
Folded Dimensions	3.5" W x 21" D x 61.75" H
Product Weight	41 lbs
Material	Alloy Steel
Number of Tiers	4
Weight Capacity per Shelf (without wheels)	Approx. 250 lbs.
Weight Capacity per Shelf (with wheels)	Approx. 75 lbs.
Total Weight Capacity (without wheels)	Up to 1000 lbs.
Total Weight Capacity (with wheels)	Up to 300 lbs.
Distance between shelves	Approx. 17.5" H (bottom two), 19" H (top)
Included Components	4 Professional Grade Caster Wheels

## 9. WARRANTY AND SUPPORT

The Origami R5 Foldable 4-Tier Garage Shelving is covered by a **1-year Limited Origami Warranty**. This warranty covers defects in materials and workmanship under normal use.

For warranty claims, technical support, or any questions regarding your product, please contact Origami customer service through their official website or the retailer where the product was purchased. Please have your model number (R5-18W) and proof of purchase ready when contacting support.

