

INTELLITEC 00-00714-000

Intellitec Auto Energy Selector Module

Model: 00-00714-000

Brand: INTELLITEC

PRODUCT OVERVIEW

The Intellitec 00-00714-000 Auto Energy Selector Module is designed to efficiently manage electrical loads in recreational vehicles (RVs). This module automatically alternates between two high-current 20-amp loads, such as a microwave and an air conditioning unit, to prevent tripping a circuit breaker when operating on a 30-amp shore power connection. It ensures stable power distribution and optimal appliance performance within the RV's electrical system. This specific module is also known as Winnebago Industries part number 136481-01-000.

IMPORTANT SAFETY INFORMATION

CAUTION: HAZARD OF ELECTRICAL SHOCK OR BURN. Always turn off the power supply to this equipment before working inside or performing any installation or maintenance procedures. Failure to do so can result in serious injury or death.

WARNING: Refer service to qualified personnel. To reduce the risk of fire or electric shock, install in a controlled environment relatively free of contaminants.

FOR SUPPLY CONNECTIONS: Use #12AWG rated at least 75°C. Use copper conductors only.

Ensure all connections are secure and torqued to the specified values to prevent loose connections and potential hazards.

INSTALLATION GUIDE

Installation of the Intellitec Auto Energy Selector Module requires electrical knowledge. If you are not comfortable working with electrical systems, it is highly recommended to seek assistance from a qualified RV technician.

Pre-Installation Steps:

1. **Disconnect Power:** Before beginning any work, ensure all power sources to the RV are disconnected. This

includes unplugging from shore power, turning off the generator, and disconnecting the battery bank. Verify with a voltmeter that no power is present.

2. **Locate Existing Module (if replacing):** The module is typically found in an electrical compartment, often near the main breaker panel or where high-draw appliances like the microwave and AC are wired. Note the existing wiring configuration.
3. **Accessibility:** Be aware that access to the module may be constrained, requiring careful maneuvering.

Wiring Instructions:

Refer to the wiring diagram printed on the module for correct connections. The module manages two 20A loads. Ensure you use #12AWG copper conductors rated for at least 75°C for all supply connections.

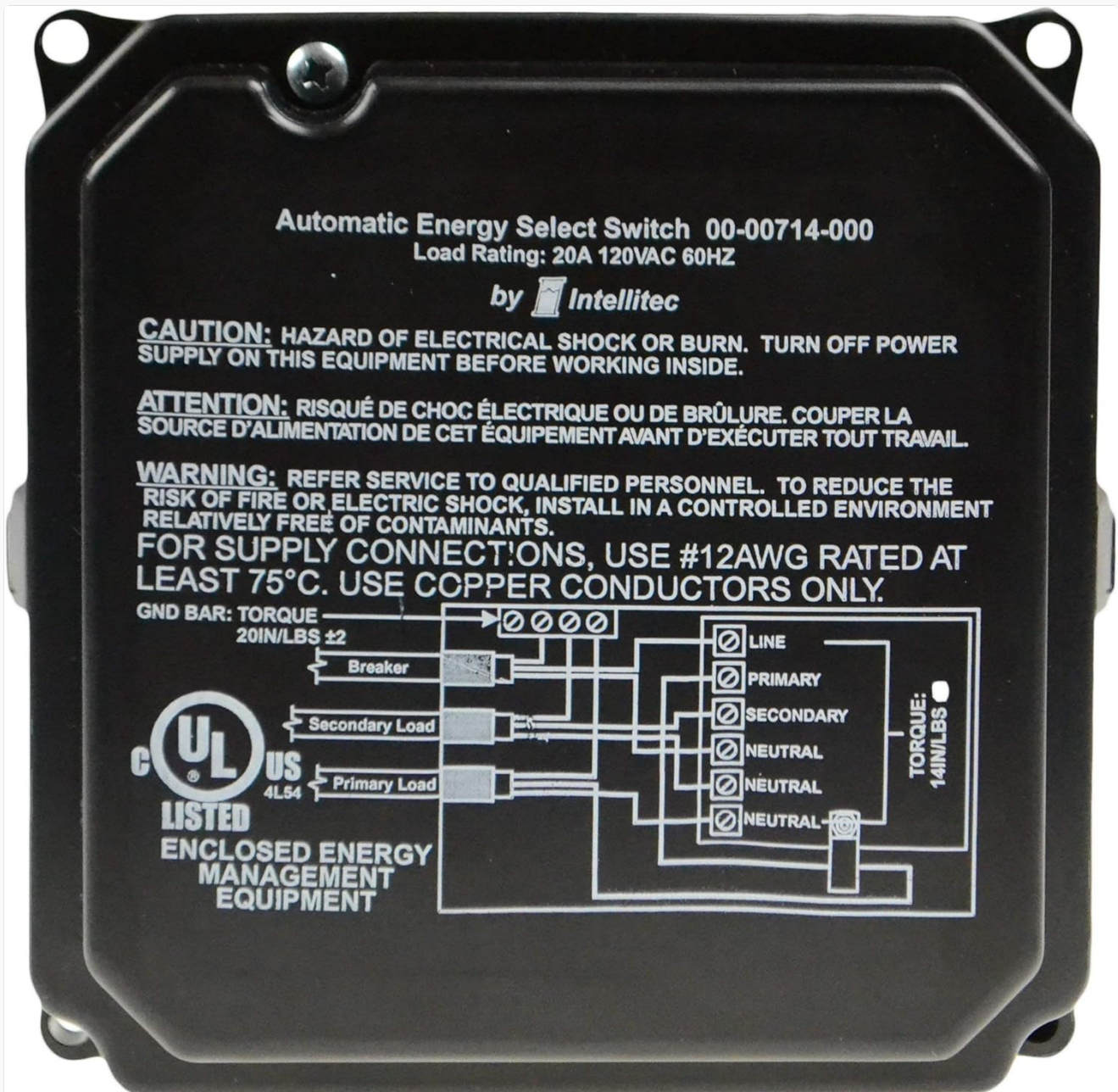


Image: Front view of the Intellitec Auto Energy Selector Module, clearly showing the wiring diagram. The diagram illustrates connections for Line, Primary Load, Secondary Load, Neutral, and a Breaker. Torque specifications for the GND BAR (20 IN/LBS) and other terminals (14 IN/LBS) are also visible. Safety warnings regarding electrical shock and the use of #12AWG copper conductors are prominent.

- **Line Connection:** Connect the main incoming power line to the designated "LINE" terminal.
- **Primary Load:** Connect the wiring for the primary high-current appliance (e.g., air conditioner) to the "PRIMARY" load terminal.

- **Secondary Load:** Connect the wiring for the secondary high-current appliance (e.g., microwave) to the "SECONDARY" load terminal.
- **Neutral Connections:** Connect all neutral wires to the appropriate "NEUTRAL" terminals.
- **Ground Bar:** Connect the ground wire to the GND BAR and torque to 20 IN/LBS.
- **Terminal Torque:** Ensure all other terminal connections are torqued to 14 IN/LBS for a secure and safe connection.

Post-Installation:

1. **Secure Module:** Mount the module securely in its intended location.
2. **Restore Power:** Carefully restore power to the RV, starting with the battery, then generator, and finally shore power.
3. **Test Functionality:** Test both primary and secondary loads (e.g., AC and microwave) to ensure they operate correctly and the module is managing the power distribution as expected.

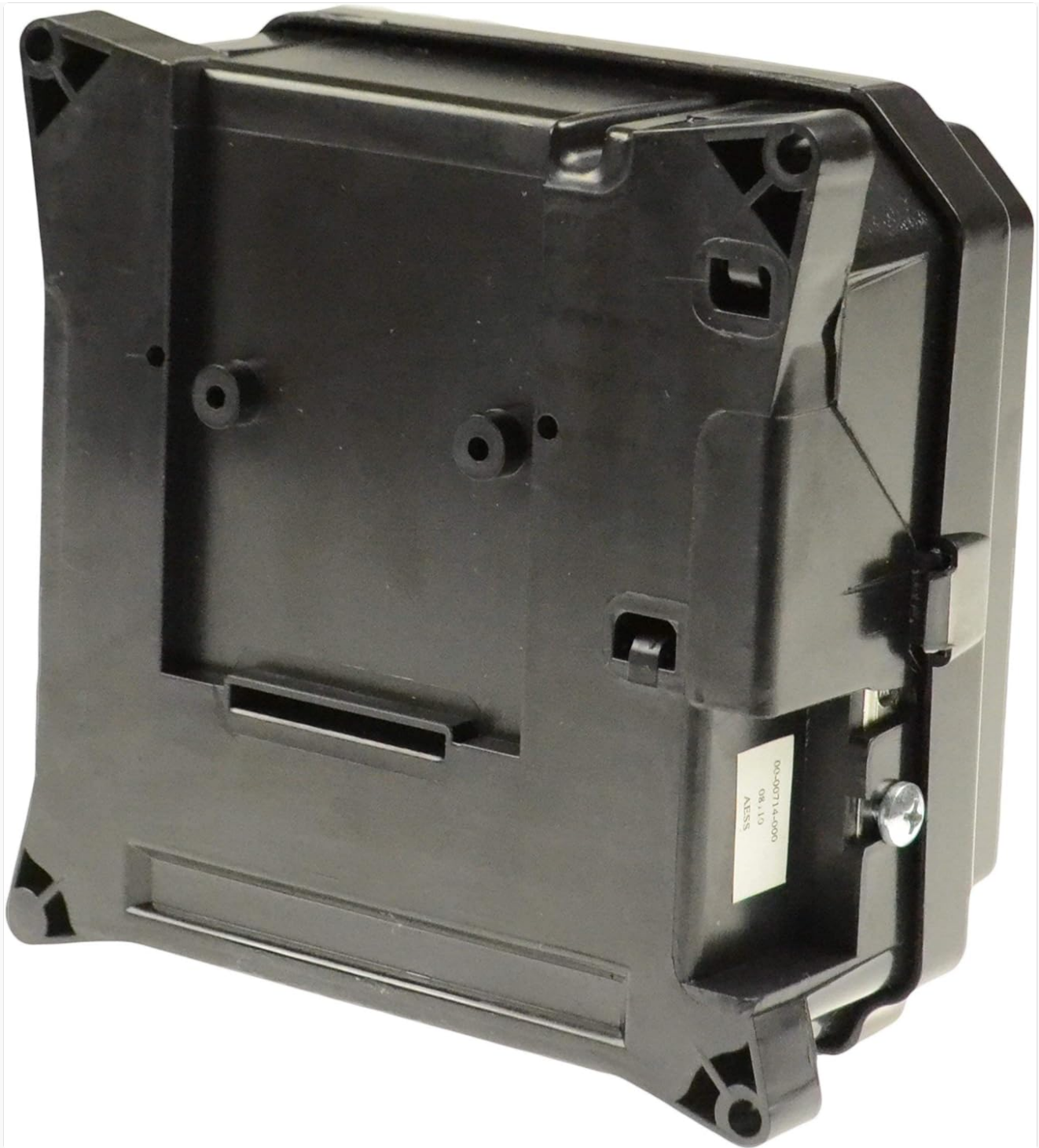


Image: Side and back view of the Intellitec Auto Energy Selector Module, illustrating its compact design and the mounting points for secure installation within an RV's electrical compartment. This view highlights the physical dimensions and how it would fit into a confined space.

OPERATING PRINCIPLES

The Intellitec Auto Energy Selector Module operates automatically to prevent overloading a 30-amp RV electrical system when two high-draw appliances are active. It intelligently monitors the current draw of the primary and secondary loads. When both appliances demand power simultaneously, the module will momentarily de-energize one load (typically the secondary load) to allow the other to operate, then cycle back to provide power to the de-energized load once the primary load's demand decreases or cycles off. This ensures that the total current draw remains within safe limits, preventing circuit breaker trips and maintaining system stability.

Users do not need to manually interact with the module during operation; its function is entirely automatic.

MAINTENANCE

The Intellitec Auto Energy Selector Module is designed for long-term, maintenance-free operation. However, periodic inspection of the electrical connections is recommended to ensure they remain tight and free from corrosion. This should only be performed by qualified personnel with the power supply disconnected.

- **Annual Inspection:** Annually, or before extended trips, visually inspect the module and its wiring for any signs of wear, damage, or loose connections.
- **Cleaning:** Keep the area around the module clean and free of dust and debris to ensure proper ventilation and prevent overheating.
- **Environmental Conditions:** Ensure the module is installed in a controlled environment, as specified in the safety warnings, to protect it from excessive moisture or contaminants.

TROUBLESHOOTING

If you experience issues with your RV's electrical system that you suspect are related to the Auto Energy Selector Module, consider the following common problems and solutions:

Problem	Possible Cause	Solution
Clicking Noise from Module	Internal relay failure or module malfunction. This often indicates the module is failing to properly switch loads.	This is a common symptom of a failing module. Replacement is typically required. Ensure power is off before inspection or replacement.
Appliances (e.g., AC, Microwave) Not Working or Cycling Incorrectly	Module failure, incorrect wiring, or insufficient power supply.	<ul style="list-style-type: none">• Verify all power sources (shore power, generator) are active and stable.• Check all wiring connections to the module for tightness and correct placement according to the diagram.• If the module is clicking or behaving erratically, it may need replacement.
Circuit Breaker Trips Frequently	Overload, faulty appliance, or module not properly shedding loads.	<ul style="list-style-type: none">• Ensure you are not attempting to run too many high-draw appliances simultaneously beyond the system's capacity.• Test appliances individually to rule out a faulty appliance.• If the module is not shedding loads as expected, it may be defective.

For complex electrical issues or if troubleshooting steps do not resolve the problem, consult a certified RV electrician or the product manufacturer.

PRODUCT SPECIFICATIONS

Brand	INTELLITEC
Manufacturer	Intellitec Products LLC
Model Number	00-00714-000
Winnebago Part Number	136481-01-000
Voltage	12 Volts
Load Rating	20A 120VAC 60HZ (per load)
Item Weight	12 ounces
Product Dimensions	5.75 x 3.13 x 5.75 inches
ASIN	B00ODIQ2VQ
Date First Available	October 11, 2014

WARRANTY AND SUPPORT

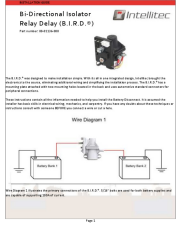

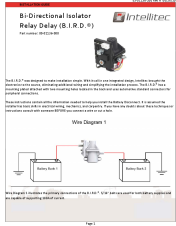


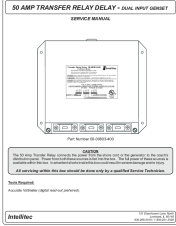
Legal Disclaimer:

Notice: Some components or parts may exhibit slight imperfections or flaws that are normal or acceptable part standards within the RV industry. These characteristics are not considered to be a defect in workmanship or material and are not eligible to be returned based on such imperfections.

Manufacturer Support:

For technical assistance, warranty claims, or further information regarding the Intellitec Auto Energy Selector Module, please contact Intellitec Products LLC directly. Refer to their official website or product packaging for the most current contact details.

When contacting support, please have your product model number (00-00714-000) and any relevant purchase information readily available.

	<p>Intellitec B.I.R.D.® Bi-Directional Isolator Relay Delay Installation Guide</p> <p>Installation guide for the Intellitec B.I.R.D.® (Bi-Directional Isolator Relay Delay) part number 00-01136-000. Learn how to install and connect this electrical component for dual battery systems in RVs and vehicles.</p>
	<p>Intellitec Battery Guard 1000 (RV-C) Installation Guide</p> <p>Installation guide for the Intellitec Battery Guard 1000 (RV-C), detailing setup, wiring, and operation for RV electrical systems. Includes connection diagrams, specifications, and contact information.</p>
	<p>Intellitec Bi-Directional Isolator Relay Delay (B.I.R.D.) Installation Guide</p> <p>Installation guide for the Intellitec Bi-Directional Isolator Relay Delay (B.I.R.D.) part number 00-01136-000. This document provides instructions for installing the B.I.R.D. unit, including wiring diagrams, connection types, and operational verification.</p>
	<p>Intellitec iConnex User Manual - System Control and Keypad Integration</p> <p>Comprehensive user manual for the Intellitec iConnex system, detailing product specifications, installation procedures, diagnostic displays, GUI operation, module and keypad addressing, programming, expansion capabilities, and keypad features. Covers OLED series keypads and optional temperature sensors.</p>
	<p>Intellitec iConnex User Manual V2.01 - Vehicle Electrical Control System</p> <p>Comprehensive user manual for the Intellitec iConnex system (V2.01). Covers product specifications, installation schematics and wiring, diagnostic displays, GUI, module and keypad addressing, programming, CAN-Bus termination, system expansion, keypad features, OLED series keypads, and temperature sensor integration. Includes technical helpline and website.</p>
	<p>Intellitec 50 Amp Transfer Relay Delay - Dual Input Genset Service Manual</p> <p>Service manual for the Intellitec 50 Amp Transfer Relay Delay, a dual input genset system. This document provides operational details, servicing instructions, troubleshooting, and wiring diagrams for the 00-00803-400 model.</p>

