

ECLIPSE DREC4000

DENSO TEN ECLIPSE DREC4000 Drive Recorder User Manual

Model: DREC4000

Brand: ECLIPSE (DENSO TEN)

1. INTRODUCTION

The ECLIPSE DREC4000 is a high-quality drive recorder designed for discreet installation and reliable performance. Its separate main unit and camera design allows for minimal visual obstruction in the vehicle interior. Manufactured by DENSO TEN, a trusted supplier to automobile manufacturers, this device is built to withstand harsh automotive environments.

Key features include:

- Separate camera and main unit for neat installation and minimal driver's view obstruction.
- Made in Japan with a 3-year manufacturer's warranty (1-year warranty for the included microSD card).
- Durable quality resistant to temperature, humidity, and vibration.
- Compatible with DC12V/24V vehicles, including special vehicles like trucks.
- Equipped with a 1/2.7-inch CMOS image sensor and HDR synthesis technology for clear images, even at night or against backlight.
- Driving trajectory, location, and speed can be reviewed using a dedicated PC viewer with built-in GPS.

2. PRODUCT COMPONENTS

The DREC4000 package includes the following items:

■他社（イメージセンサーサイズ不明200万画素）



■当社（1/2.7インチ100万画素）



Image: All components of the DREC4000 drive recorder, including the main unit, camera, various connection cables, and the microSD card.

- Main Unit (Drive Recorder)
- Camera Unit
- Power Cable
- Camera Connection Cable
- GPS Antenna
- microSD Card (4GB)
- Mounting Brackets and Adhesives
- Cable Clips

3. SETUP AND INSTALLATION

Proper installation is crucial for optimal performance and safety. It is recommended to have this device installed by a qualified professional.

3.1 Camera Unit Placement

The camera unit is designed to be compact and discreet. Install it on the windshield, typically near the rearview mirror, ensuring it does not obstruct the driver's view. Use the provided adhesive mount for secure attachment.

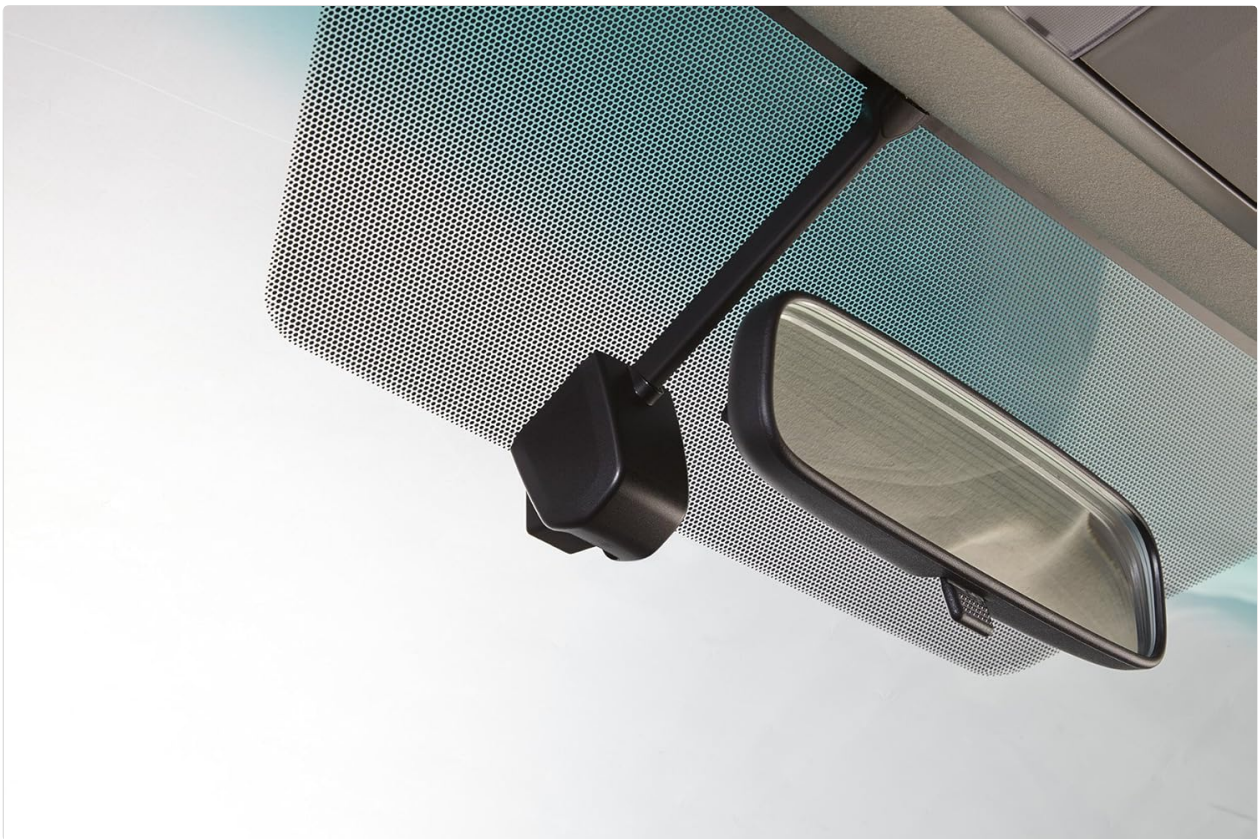


Image: The compact camera unit of the DREC4000 installed discreetly on a car windshield near the rearview mirror, showing its minimal footprint.

3.2 Main Unit Placement

The main unit can be hidden in a less visible location within the vehicle, such as the glove compartment or under the dashboard, similar to an ETC device. Ensure it is secured to prevent movement during driving.



Image: The DREC4000 main unit installed discreetly in the car's interior, demonstrating how it can be hidden from view.

3.3 Wiring

Connect the camera unit to the main unit using the provided camera connection cable. Connect the power cable to the main unit and to the vehicle's power supply (DC12V or DC24V, depending on your vehicle). Ensure all cables are routed safely and securely, away from moving parts and without obstructing airbags or driver controls.

3.4 microSD Card Insertion

Insert the included 4GB microSD card into the designated slot on the main unit. Ensure it is inserted correctly until it clicks into place.



Image: Top-down view of the DREC4000 main unit, highlighting the microSD card slot and the 'Error' and 'REC' indicator lights.

4. OPERATING INSTRUCTIONS

The DREC4000 is designed for automatic operation once installed and powered.

4.1 Automatic Recording

Upon starting your vehicle, the drive recorder will automatically power on and begin recording. The 'REC'

indicator light on the main unit will illuminate to confirm recording is in progress.

4.2 Recording Modes and Capacity

The included 4GB microSD card provides the following approximate recording times:

- High-quality mode: Approximately 100 minutes
- Standard mode: Approximately 150 minutes
- Long-time mode: Approximately 200 minutes

When the microSD card's capacity is full, the system will automatically overwrite the oldest recorded data. For extended recording, consider using a larger capacity microSD card (ensure compatibility with the device).

4.3 Event Recording

In the event of a sudden impact or unusual acceleration/deceleration, the device will automatically save the current recording as an event file, protecting it from being overwritten. These files can be reviewed separately.

4.4 Viewing Recorded Footage

To view recorded footage, remove the microSD card from the main unit and insert it into a computer. Use the dedicated PC viewer software to access and manage the video files. The PC viewer also displays GPS data, including vehicle location and speed, providing a comprehensive record of your journey.



Image: An angled view of the DREC4000 main unit, illustrating the microSD card slot for easy removal and access to recorded data.

5. MAINTENANCE

Regular maintenance ensures the longevity and reliable operation of your DREC4000 drive recorder.

5.1 microSD Card Management

- **Regular Backup:** Periodically back up important recordings from the microSD card to your computer.
- **Formatting:** It is recommended to format the microSD card every few months to maintain optimal performance and prevent data corruption. This can typically be done through the PC viewer software or by following specific instructions in the full product manual.
- **Replacement:** microSD cards have a limited lifespan. If you experience frequent recording errors or data loss, consider replacing the microSD card. The included card has a 1-year warranty.

5.2 Cleaning

- Wipe the camera lens and main unit with a soft, dry cloth to remove dust and smudges.
- Do not use abrasive cleaners or solvents, as these can damage the device.

6. TROUBLESHOOTING

If you encounter issues with your DREC4000, refer to the following common troubleshooting steps:

6.1 No Power / Not Recording

- Check all cable connections to ensure they are secure.
- Verify that the vehicle's power outlet is functioning.
- Ensure the microSD card is inserted correctly.

6.2 Poor Image Quality

- Clean the camera lens to remove any dirt or smudges.
- Ensure the camera is securely mounted and not vibrating.
- Check the recording settings in the PC viewer; ensure high-quality mode is selected if desired.
- While the DREC4000 offers good clarity with its 1-megapixel sensor and HDR, it is not a Full HD (1920x1080) device. License plate readability may require closer proximity compared to higher resolution cameras.



Image: Comparison demonstrating the DREC4000's ability to capture clearer details like license plates in daylight conditions compared to other cameras.



Image: Comparison illustrating the DREC4000's superior performance in night and backlit scenarios, making objects and license plates more discernible than with other cameras.

6.3 microSD Card Errors

- If the 'Error' indicator light is on, the microSD card may be faulty or require formatting.
- Try formatting the card using the PC viewer software.
- If errors persist, replace the microSD card.

6.4 GPS Signal Issues

- Ensure the GPS antenna is installed in a location with a clear view of the sky.
- Avoid placing the antenna near metallic objects or other electronic devices that might interfere with the signal.

7. SPECIFICATIONS

Feature	Specification
Manufacturer	ECLIPSE (DENSO TEN)
Model Name	DREC4000
Product Model Number	DREC4000
Image Sensor	1/2.7-inch CMOS (1 Million Pixels)
Video Technology	HDR Synthesis Technology
Power Input	DC12V / DC24V (Vehicle Specific)
Operating Temperature	-20°C to +65°C

Storage Medium	microSD Card (4GB included)
Product Dimensions (D x W x H)	22 x 70 x 113 mm
Item Weight	906 g

8. WARRANTY AND SUPPORT

8.1 Warranty Information

The ECLIPSE DREC4000 drive recorder comes with a **3-year manufacturer's warranty** from the date of purchase. The included microSD card has a separate **1-year warranty**. Please retain your proof of purchase for warranty claims. The warranty covers defects in materials and workmanship under normal use.

8.2 Customer Support

For technical assistance, installation inquiries, or warranty service, please contact your authorized ECLIPSE dealer or DENSO TEN customer support. Refer to the official ECLIPSE website or the full product manual for contact details and further support resources.

You can find more information and support on the official ECLIPSE store page:[ECLIPSE Store on Amazon.co.jp](#)