

## SureFlap MPF001

# SureFeed Microchip Pet Feeder

Model: MPF001 Standard Version

Brand: SureFlap

## PRODUCT OVERVIEW

The SureFeed Microchip Pet Feeder is designed to provide selective access to food for your pets. It operates by recognizing a pet's unique veterinary implanted microchip or an RFID collar tag, ensuring that only authorized pets can access the food within. This system is particularly beneficial in multi-pet households to manage individual dietary needs, prevent food theft, and assist with weight management.

The feeder features a sealed bowl compartment that helps keep food fresh. A training mode is included to gradually introduce timid pets to the feeder's operation.

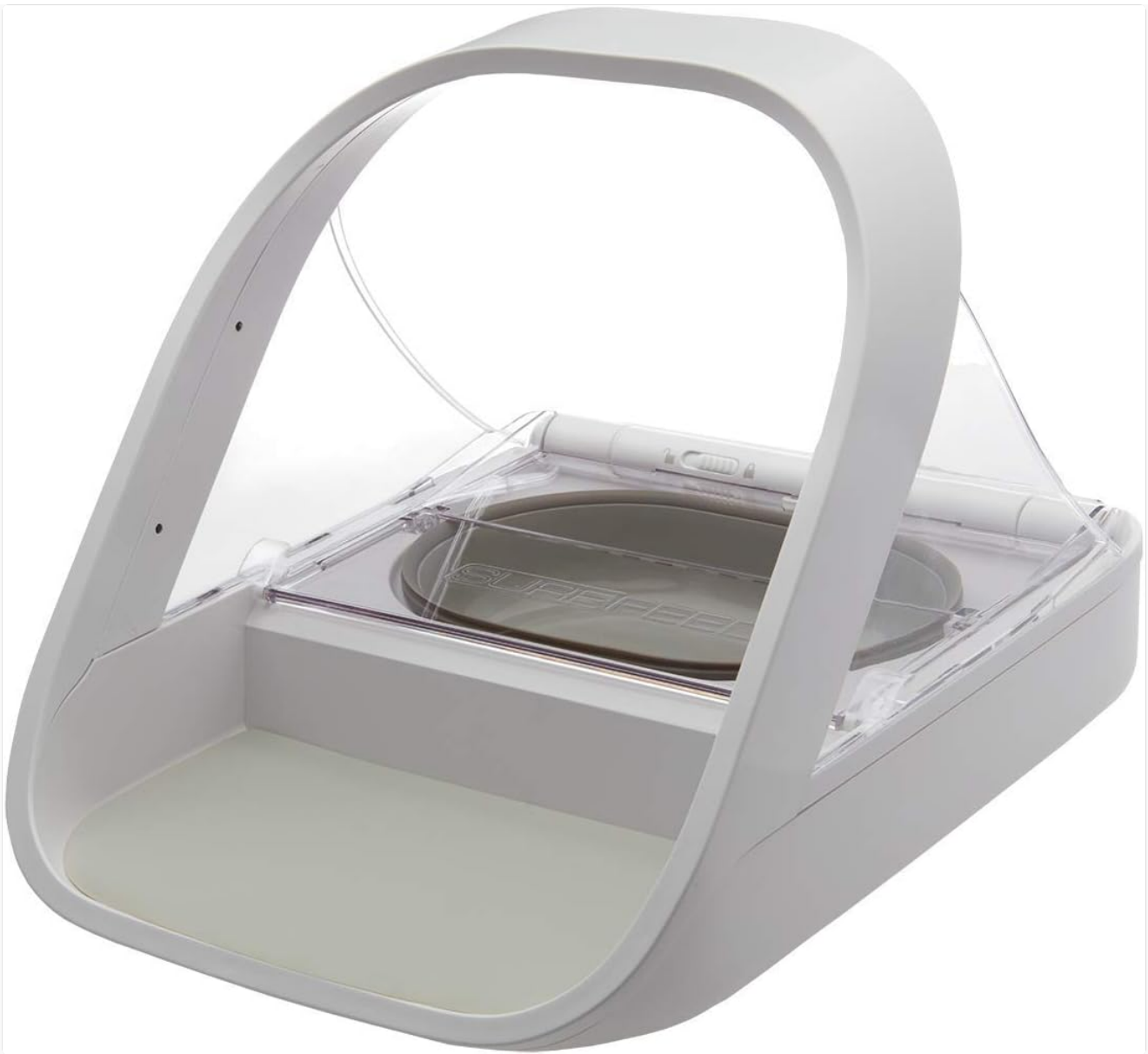


Image: The SureFeed Microchip Pet Feeder in its closed position, ready for use.

## WHAT'S INCLUDED

---

The SureFeed Microchip Pet Feeder package contains the following items:

- 1 x SureFeed Microchip Pet Feeder unit
- 1 x Grey single bowl
- 1 x Grey split bowl (for wet and dry food)
- 1 x Grey mat
- 1 x RFID collar tag
- 1 x User manual (this document)

Additional bowls and mats in various colors (grey, green, pink, blue) and stainless steel bowls can be purchased separately.

## SETUP

---

1. **Unboxing:** Carefully remove all components from the packaging.
2. **Battery Installation:** The feeder requires 4 C batteries (not included). Locate the battery compartment on the

underside of the unit and insert the batteries, ensuring correct polarity.

3. **Bowl and Mat Placement:** Place the desired bowl (single or split) into the feeder's designated slot. Position the grey mat on the front base of the feeder.
4. **Initial Power On:** Once batteries are installed, the feeder will power on.



Image: Side view of the feeder demonstrating the open lid mechanism, revealing the food bowl.

## OPERATING INSTRUCTIONS

### 1. Programming Microchips or RFID Tags

The feeder can be programmed to recognize up to 32 unique microchip numbers or RFID collar tags. It is compatible with 9 (Avid Secure), 10 (FDXA), and 15 (FDXB) digit microchip numbers.

1. **Enter Learning Mode:** Press and hold the "Add Pet" button (usually marked with a paw print or '+' symbol) until the indicator light begins to flash.
2. **Introduce Pet/Tag:** Guide your pet to place its head into the archway of the feeder, or hold the RFID collar tag directly over the sensor area. The feeder will emit a click sound and the light will turn solid green to indicate successful registration.
3. **Exit Learning Mode:** The feeder will automatically exit learning mode after a short period of inactivity, or you can press the "Add Pet" button again briefly.

If you are unsure of your pet's microchip number, consult your veterinarian, pet shelter, or animal rescue.

### 2. Training Mode

For timid pets, the training mode allows the lid to close in stages, helping them to gradually become accustomed to the movement and sound of the feeder.

- **Activating Training Mode:** Refer to your specific model's user manual for the exact button or switch to activate training mode. This typically involves a dedicated "Training" button or a switch on the underside.
- **Progressive Closure:** In training mode, the lid will close in smaller increments each time it activates, reducing

the initial startling effect for the pet.

- **Exiting Training Mode:** Once your pet is comfortable, deactivate training mode to enable full lid closure.

### 3. Feeding Operation

Once programmed, the feeder will automatically open when a recognized pet approaches and places its head within the feeder's arch. The lid will close when the pet moves away, sealing the food and maintaining freshness.



Image: A cat actively eating from the SureFeed Microchip Pet Feeder, demonstrating the open lid during use.



Image: The SureFeed Microchip Pet Feeder placed on a kitchen floor, with an orange cat standing nearby, illustrating typical placement.



Image: The SureFeed Microchip Pet Feeder with wet food visible in the bowl, demonstrating its capacity for various food types.

## **MAINTENANCE**

- **Cleaning:** The feeder bowls and mat can be removed for cleaning. The main unit should be wiped clean with a damp cloth. Do not submerge the main unit in water. The bowls and mat are suitable for hand washing only.
- **Battery Replacement:** When the batteries are low, an indicator light will typically signal the need for replacement. Replace all 4 C batteries simultaneously to ensure optimal performance.
- **Sensor Cleaning:** Periodically check and gently clean the sensor area within the archway to ensure unobstructed detection of microchips or RFID tags.

## TROUBLESHOOTING

Problem	Possible Cause	Solution
Feeder not opening for pet.	Pet's microchip/tag not registered; low batteries; obstructed sensor.	Ensure pet's microchip/tag is correctly registered. Replace batteries. Clean sensor area.
Lid not closing completely.	Obstruction in lid path; feeder in training mode.	Check for any debris blocking the lid. Deactivate training mode if not needed.
Feeder not powering on.	Incorrect battery installation; dead batteries.	Verify battery polarity. Replace with fresh C batteries.

## SPECIFICATIONS

- **Model Name:** SureFeed Microchip Pet Feeder
- **Model Number:** MPF001 (also known as 194705)
- **Dimensions (LxWxH):** 12.86 x 7.75 x 10.24 inches
- **Weight:** 3.28 pounds (1.49 Kilograms)
- **Power Source:** 4 x C batteries (not included)
- **Material:** Plastic
- **Color:** White
- **Compatibility:** 9, 10, and 15 digit microchips; SureFlap RFID collar tags
- **Bowl Capacity:** 13.5 fl. oz (wet or dry food)
- **Target Species:** Cats, Small to Medium Dogs



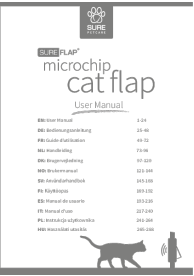
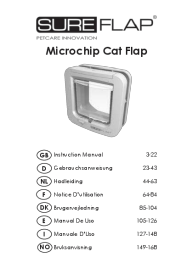

## WARRANTY AND SUPPORT

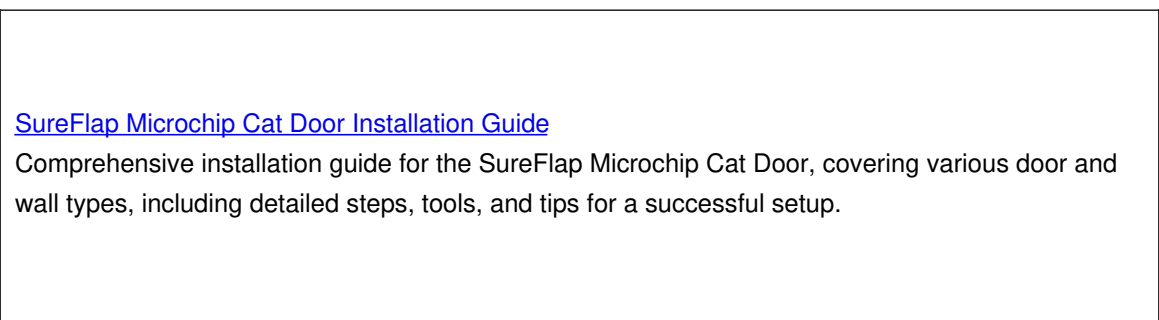
The SureFeed Microchip Pet Feeder comes with a **Three-Year Warranty** from the date of purchase. This warranty covers defects in materials and workmanship under normal use.

For technical support, troubleshooting assistance, or warranty claims, please visit the official Sure Petcare website or contact their customer service department. Contact information can typically be found on the Sure Petcare website or on the product packaging.

**Online Resources:** For additional information, FAQs, and video tutorials, please refer to the [Sure Petcare Store on Amazon](#).

Related Documents - MPF001

	<p><a href="#">SureFeed Microchip Pet Feeder User Manual</a></p> <p>A comprehensive guide to setting up, operating, and troubleshooting the SureFeed Microchip Pet Feeder, designed to provide selective access to food for pets.</p>
	<p><a href="#">SureFlap Microchip Pet Doors: Features, Benefits, and Specifications</a></p> <p>Explore the SureFlap range of microchip-enabled pet doors for cats and small dogs, offering security, freedom, and peace of mind. Learn how they work, product specifications, installation, and FAQs.</p>
	<p><a href="#">SureFlap Microchip Cat Flap User Manual</a></p> <p>Comprehensive user manual for the SureFlap Microchip Cat Flap, detailing installation, programming, operation, maintenance, troubleshooting, and warranty information.</p>
	<p><a href="#">SureFlap Microchip Cat Flap Instruction Manual</a></p> <p>Comprehensive instruction manual for the SureFlap Microchip Cat Flap, detailing installation, operation, and features for pet owners.</p>
	<p><a href="#">SureFlap Microchip Pet Door Instruction Manual</a></p> <p>Comprehensive guide to installing, operating, and troubleshooting the SureFlap Microchip Pet Door, featuring microchip and RFID tag compatibility for secure pet access.</p>



Comprehensive installation guide for the SureFlap Microchip Cat Door, covering various door and wall types, including detailed steps, tools, and tips for a successful setup.