

## Schneider Electric HOM4080M200PRB

# Schneider Electric Square D Homeline HOM4080M200PRB Load Center Instruction Manual

Model: HOM4080M200PRB

## INTRODUCTION

This instruction manual provides essential information for the safe and proper installation, operation, and maintenance of the Schneider Electric Square D Homeline HOM4080M200PRB 200 Amp 40-Space 80-Circuit Outdoor Main Breaker Load Center. Please read this manual thoroughly before proceeding with any installation or operation. Retain this manual for future reference.

## IMPORTANT SAFETY INFORMATION

**DANGER: Risk of electric shock, explosion, or arc flash.**

- This equipment must be installed and serviced only by qualified electrical personnel.
- Turn off all power supplying this equipment before working on or inside equipment.
- Always use a properly rated voltage sensing device to confirm power is off.
- Replace all devices, doors, and covers before turning on power to this equipment.
- Failure to follow these instructions will result in death or serious injury.

This load center is designed for use in residential and commercial power distribution systems. It is UL listed and intended for use with Homeline circuit breakers only.

## PRODUCT OVERVIEW

The Square D Homeline HOM4080M200PRB is a 200 Amp, 40-space, 80-circuit outdoor main breaker load center. It features a plug-on neutral design for simplified wiring and is constructed with a plated aluminum bus bar.

## Technical Benefits

### Meter Main Ringless



Rated for 225A maximum panel load



Has 40 spaces for up to 80 circuits



Capable of accepting up to 70A Solar when paired with 200A Service Disconnect



Compatible with Schneider Energy Monitor (formerly Wiser energy monitor) for Whole Home Energy Monitoring



Compatible with Square D Homeline circuit breakers



Designed for use in Indoor applications



Figure 1: Front view of the Square D Homeline HOM4080M200PRB Load Center.

### Key Features:

- **200 Amp Main Breaker:** Provides primary overcurrent protection for the entire electrical system.
- **40 Spaces, 80 Circuits:** Accommodates a large number of circuits for various applications.
- **Plug-on Neutral Ready:** Features a fully distributed neutral bar for easy installation of Homeline Plug-on Neutral combination arc fault breakers.
- **Outdoor Rated:** Includes a rainproof outdoor cover for exterior installations.
- **Flexible Breaker Compatibility:** Each pole space accepts full-size, tandem, or quad breakers.
- **Efficient Grounding:** Ground and neutral bars accept up to (3) #10-14 equipment grounds.
- **Surge Arrestor Accommodation:** Designed to accommodate a plug-on secondary surge arrestor (sold separately).

### SETUP AND INSTALLATION

Installation of this load center must be performed by a qualified electrician in accordance with all national and local electrical codes and standards. Improper installation can lead to electrical hazards, fire, or equipment damage.

## Pre-Installation Steps:

1. **Verify Power Disconnection:** Ensure all power to the installation site is completely disconnected and locked out.
2. **Inspect Equipment:** Before installation, carefully inspect the load center for any shipping damage. Do not install damaged equipment.
3. **Review Local Codes:** Confirm compliance with all applicable electrical codes and regulations.

## Mounting the Load Center:

- Select a suitable outdoor location that provides adequate clearance and protection from physical damage.
- Mount the load center securely to a rigid surface using appropriate fasteners. Ensure the enclosure is plumb and level.



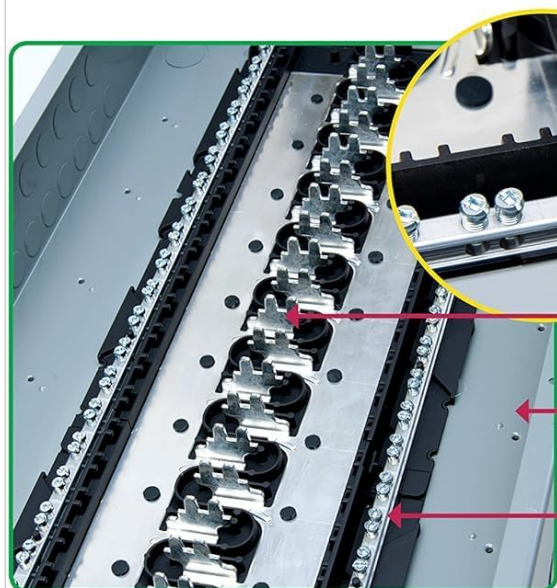


Figure 2: Interior view showing the main breaker and bus bar configuration.

## Wiring Connections:

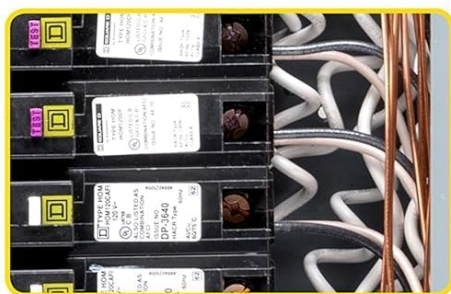
1. **Main Power Feed:** Connect the main service entrance conductors to the main breaker terminals. Ensure proper torque specifications are met.
2. **Neutral Connections:** Utilize the fully distributed neutral bar for connecting neutral conductors from branch circuits. The plug-on neutral design simplifies connections for compatible breakers.
3. **Ground Connections:** Connect equipment grounding conductors to the ground bar. The ground and neutral bars accept up to three #10-14 AWG equipment grounds.
4. **Branch Circuit Breakers:** Install Homeline circuit breakers into the designated spaces. Ensure breakers are securely seated.

# Homeline Plug-on Neutral Load Centers



- > **Faster installation** - No Pigtails!
- > **Easier and faster installation** — Fully distributed neutral bar
- > **Simplifies upgrades and remodels** - Accepts Plug-On Neutral, pigtail, full-size, and tandem circuit breakers on every space
- > **Easier installation** — Enclosure improvements include larger service conductor entrance and slotted side mounting holes
- > **Grounds install 1/3 faster** — Ground and unused neutral (when bonded) terminals are now UL® listed for up to (3) #10–14 wires

## See the difference!



▲ Pigtail Neutral Connection

- > **Less wiring**
- > **Clean gutter**
- > **Fast installation**



▲ Plug-on Neutral Connection

**SQUARE D**  
by Schneider Electric

Figure 3: Illustration of the Plug-on Neutral connection system, simplifying wiring.

After all wiring is complete, ensure all connections are tight and secure. Replace the cover and secure it properly before restoring power.

## OPERATING INSTRUCTIONS

The Square D Homeline load center is designed for straightforward operation once installed. The primary operational components are the main breaker and individual branch circuit breakers.

### Main Breaker Operation:

- **Turning Power ON:** Ensure all branch circuit breakers are in the OFF position. Flip the main breaker handle to the ON position.
- **Turning Power OFF:** Flip the main breaker handle to the OFF position. This disconnects power to all branch circuits.
- **Tripped Main Breaker:** If the main breaker trips, it will move to a center position. To reset, first move the handle completely to the OFF position, then to the ON position. Investigate the cause of the trip before resetting.

## Branch Circuit Breaker Operation:

- **Turning Circuit ON/OFF:** Each branch circuit breaker controls power to a specific circuit. Flip the handle to ON or OFF as needed.
- **Tripped Branch Breaker:** If a branch breaker trips, it will move to a center position. To reset, first move the handle completely to the OFF position, then to the ON position. A tripped breaker indicates an overload or short circuit on that specific circuit.

Always ensure the load center door is securely closed when not actively accessing the breakers.

## MAINTENANCE

Regular maintenance helps ensure the longevity and safe operation of your load center. Always disconnect power before performing any maintenance.

- **Annual Inspection:** Have a qualified electrician inspect the load center annually. This includes checking for loose connections, signs of overheating, corrosion, or damage to wiring and components.
- **Cleaning:** Keep the interior of the load center clean and free of dust, debris, and insects. Use a dry, non-conductive brush or vacuum. Never use liquids for cleaning.
- **Tighten Connections:** Over time, electrical connections can loosen. During inspections, ensure all terminal screws for breakers, main lugs, neutral, and ground bars are tightened to the manufacturer's specified torque values.
- **Door and Gasket:** For outdoor units, regularly inspect the door and its gasket for damage to ensure it remains rainproof and protects internal components from environmental elements.

**WARNING: Do not attempt to repair or modify any internal components of the load center. Contact a qualified electrician for any repairs.**

## TROUBLESHOOTING

This section addresses common issues you might encounter with your load center. For complex problems, always consult a qualified electrician.

Problem	Possible Cause	Solution
Circuit Breaker Trips Frequently	Overloaded circuit, short circuit, ground fault, or faulty appliance.	Unplug appliances from the circuit. Reset the breaker (OFF then ON). If it trips again, consult an electrician to identify the fault.
No Power to Entire House	Tripped main breaker, utility power outage, or main service line issue.	Check if the main breaker is tripped (center position). Reset if necessary. Check with your utility company for local outages. If the main breaker trips immediately after resetting, contact an electrician.
Burning Smell or Discoloration	Loose connection, overloaded circuit, or internal component failure.	<b>IMMEDIATELY turn off the main breaker.</b> Contact a qualified electrician for urgent inspection and repair.

## SPECIFICATIONS

Technical specifications for the Square D Homeline HOM4080M200PRB Load Center:

Model Number	HOM4080M200PRB
Brand	Schneider Electric (Square D Homeline)
Main Breaker Amperage	200 Amps
Number of Spaces	40
Maximum Circuits	80
Phase Type	Single Phase
Material	Aluminum (Bus Bar)
Enclosure Type	Outdoor, Rainproof
Certification	UL Listed
Product Dimensions (H x W x D)	39.37 x 14.75 x 4.52 inches
Item Weight	40 pounds
Special Features	Plug-on Neutral ready



## Dimensions of product



Figure 4: Product dimensions for the HOM4080M200PRB Load Center.

## WARRANTY INFORMATION

Schneider Electric (Square D) warrants its single-phase load centers, in a residential application, to be free from defects in material and workmanship under normal care and proper usage for a period of **10 years** from the date of installation for HOMELINE load centers when used with the appropriate Square D HOMELINE branch circuit breakers.

This warranty is subject to the terms and conditions outlined in the full warranty statement provided with the product or available from Schneider Electric.

## SUPPORT AND CONTACT INFORMATION

For technical assistance, product inquiries, or warranty claims, please contact Schneider Electric customer support or visit their official website.

- **Manufacturer:** Schneider Electric



- **Website:** [www.se.com/us/en/](http://www.se.com/us/en/) (or refer to product packaging for specific support contacts)

Always provide the model number (HOM4080M200PRB) when contacting support for efficient service.

