

Dynavin 02058DVNE60N6

Dynavin DVN-E60 Car Radio Navigation System User Manual

Model: DVN-E60 (02058DVNE60N6)

1. INTRODUCTION

This manual provides detailed instructions for the installation, operation, and maintenance of your Dynavin DVN-E60 Car Radio Navigation System. This system is specifically designed for BMW 5 Series E60 and E61 models, integrating advanced navigation, multimedia, and communication features into your vehicle's dashboard.

Please read this manual thoroughly before using the device to ensure proper operation and to prevent damage.

2. SAFETY INFORMATION

Always observe the following safety precautions to prevent injury or damage to the device:

- Do not attempt to disassemble or modify the unit. Unauthorized modifications can lead to electric shock, fire, or damage to the device.
- Ensure the vehicle is parked safely before operating the navigation or multimedia functions that require visual attention. Distracted driving can lead to accidents.
- Keep the unit away from water and excessive moisture.
- Use only accessories and parts specified by Dynavin.
- If the unit malfunctions, disconnect power and consult a qualified service technician.

3. PACKAGE CONTENTS

Verify that all components are present in the package:

- Dynavin DVN-E60 Main Unit
- Power Harness
- GPS Antenna
- USB Cable
- User Manual (this document)
- Mounting Hardware (screws, brackets)
- External Microphone (if included with specific package)

4. INSTALLATION GUIDE

Professional installation is highly recommended for this product. Incorrect installation can damage the vehicle's electrical system or the unit itself.

4.1 Pre-Installation Checks

1. Ensure the vehicle's ignition is off and the battery is disconnected before starting installation.
2. Confirm compatibility with your BMW 5 Series E60/E61 model.
3. Gather all necessary tools (e.g., trim removal tools, screwdrivers, wire cutters).

4.2 Removal of Original Unit

Carefully remove the existing car radio or display unit from your BMW dashboard. Refer to your vehicle's service manual for specific instructions on trim panel and unit removal.

4.3 Wiring Connections

Connect the Dynavin DVN-E60 unit using the provided wiring harness. Ensure all connections are secure and correctly matched:

- **Main Power Harness:** Connect to the vehicle's power supply.
- **GPS Antenna:** Mount the GPS antenna in a location with a clear view of the sky (e.g., dashboard, under windshield).
- **USB Cable:** Route the USB cable to a convenient location for connecting external devices.
- **External Microphone:** Connect the microphone for hands-free calling and route it to a suitable position (e.g., near the rearview mirror).
- **CAN Bus Decoder:** Ensure the CAN bus decoder is correctly connected to integrate with vehicle controls (e.g., steering wheel controls, iDrive).

4.4 Mounting the Unit

Carefully slide the Dynavin DVN-E60 into the dashboard opening. Secure it using the original mounting points or provided brackets. Reassemble the dashboard trim panels.

5. OPERATING INSTRUCTIONS

The Dynavin DVN-E60 features an intuitive interface, often controlled via the vehicle's iDrive controller or the unit's touchscreen (if applicable).

5.1 Initial Power On and Setup

1. Reconnect the vehicle battery.
2. Turn on the vehicle ignition. The Dynavin unit should power on automatically.
3. **Language Selection:** Navigate to the system settings to select your preferred language.
4. **Time and Date:** Set the correct time and date.
5. **GPS Calibration:** Ensure the GPS signal is acquired. This may take a few minutes on first use.



Image: The system settings screen showing language selection options, including German, French, English, Japanese, Korean, and Chinese.

5.2 Main Menu Navigation

The main menu provides access to all primary functions:

- **Navigation:** Access the integrated GPS navigation system.
- **Radio:** Tune into FM/AM radio stations.
- **Media:** Play audio and video from various sources (USB, SD card, iPod, Bluetooth A2DP).
- **Phone:** Access Bluetooth hands-free calling and phonebook functions.
- **Settings:** Configure system preferences, display, audio, and vehicle integration.



Image: A screen displaying file management options, showing a directory structure with folders like "Date" and "Music," and files such as images and video.

5.3 Media Playback

The unit supports various media formats and sources:

- **USB/SD:** Insert a USB drive or SD card into the designated slot. The system will automatically detect and allow browsing of media files.
- **iPod:** Connect your iPod via the dedicated cable for direct control and playback.
- **Bluetooth A2DP:** Pair your smartphone via Bluetooth to stream audio wirelessly.



Image: The media selection screen, showing options for A2DP (Bluetooth audio), USB, iPod, and SD card as audio/video sources.



Image: The music playback interface, displaying album art, song title "California King Bed," artist "Rhanna," track number, and playback progress bar.

5.4 Bluetooth Phone Function

Pair your mobile phone to the unit for hands-free communication:

1. Go to the "Phone" menu.
2. Enable Bluetooth on your mobile phone and search for available devices.
3. Select "Dynavin" (or similar device name) from the list and enter the pairing code (usually "0000" or "1234").
4. Once paired, you can make and receive calls directly through the unit.



Image: The phone interface showing a dial pad, call history, and options for making calls.

5.5 Audio Settings

Adjust audio output for optimal sound quality:

- Access the "Sound" or "Audio" settings from the main menu.
- Adjust equalizer settings (bass, treble, balance, fader) to your preference.
- Individual volume levels for different sources (Radio, Disc, USB/SD, iPod, Navi, A2DP) can be adjusted.



Image: The audio settings screen displaying an equalizer with adjustable sliders for different audio sources like Radio, Disc, USB/SD, iPod, Navi, and A2DP.

6. MAINTENANCE

Regular maintenance ensures the longevity and optimal performance of your Dynavin DVN-E60 unit.

- **Cleaning:** Use a soft, dry cloth to clean the display and unit exterior. Do not use abrasive cleaners or solvents.
- **Software Updates:** Check the official Dynavin website periodically for firmware updates. Follow the instructions

provided with the update package carefully.

- **Data Backup:** Regularly back up important data (e.g., navigation favorites, contacts) from the unit if supported.

7. TROUBLESHOOTING

If you encounter issues with your Dynavin DVN-E60, refer to the following common problems and solutions:

Problem	Possible Cause	Solution
Unit does not power on.	Loose power connection, blown fuse, vehicle battery disconnected.	Check power harness connections. Inspect vehicle fuses. Ensure battery is connected.
No sound output.	Volume too low, mute activated, incorrect audio source selected, speaker wiring issue.	Increase volume. Check mute status. Select correct audio source. Verify speaker connections.
GPS signal lost or inaccurate.	GPS antenna obstructed or improperly installed, unit not acquiring satellites.	Ensure GPS antenna has a clear view of the sky. Check antenna connection. Move vehicle to an open area.
Bluetooth pairing failed.	Incorrect pairing code, phone not in pairing mode, unit's Bluetooth off.	Re-enter pairing code. Ensure phone's Bluetooth is discoverable. Restart unit and phone.
System freezes or crashes.	Software glitch, corrupted data, overheating.	Perform a soft reset (refer to manual for reset button location, usually a small pinhole). If persistent, consider a firmware update.

If the problem persists after attempting these solutions, please contact Dynavin customer support or a qualified service center.

8. SPECIFICATIONS

- **Model Number:** 02058DVNE60N6
- **Brand:** Dynavin
- **Compatible Vehicles:** BMW 5 Series E60, E61
- **Visible Screen Diagonal:** 22.9 cm (9 inches)
- **Item Weight:** 997.9 Grams
- **First Available:** September 9, 2014
- **Guaranteed Software Updates Until:** Unknown
- **Features:** Navigation, FM/AM Radio, Bluetooth (Hands-free & A2DP), USB/SD Playback, iPod Connectivity.

9. WARRANTY AND SUPPORT

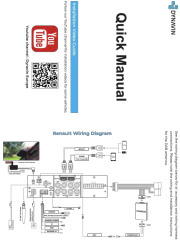

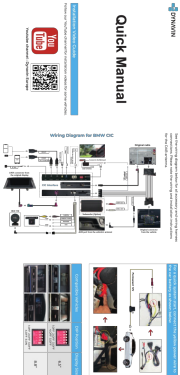


For warranty information, please refer to the warranty card included with your product or visit the official Dynavin website. Warranty terms and conditions may vary by region and retailer.

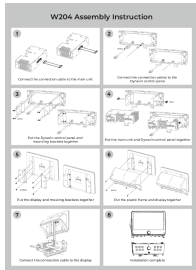
For technical support, troubleshooting assistance beyond this manual, or service inquiries, please contact Dynavin customer support directly. Contact details can typically be found on the official Dynavin website or on your purchase documentation.

Note: Specific warranty details were not provided in the product data. Please consult your purchase documentation or the manufacturer's official resources for precise information.

© 2024 Dynavin. All rights reserved.
This manual is for informational purposes only. Specifications are subject to change without notice.

Related Documents - 02058DVNE60N6

	<p>Dynavin 8 Quick Manual for Renault Vehicles</p> <p>A concise guide to installing and using the Dynavin 8 system in Renault vehicles, including navigation map updates, system reboot instructions, and support resources.</p>
	<p>Dynaway Navigation User Manual</p> <p>User manual for Dynaway navigation software, detailing features like map updates, voice and display settings, route planning, truck-specific options, speed limit warnings, and Online-TMC functionality.</p>
	<p>Dynavin Quick Manual for BMW CIC Systems - Installation and Operation</p> <p>Concise guide for installing and operating Dynavin infotainment systems in BMW CIC vehicles. Includes wiring diagrams, setup instructions, and support resources.</p>
	<p>Dynavin E46/E39/E53 Quick Manual & Installation Guide</p> <p>This guide provides essential information for installing and operating Dynavin infotainment systems in BMW E46, E39, and E53 models. It covers wiring diagrams, software updates, navigation map management, and access to user manuals.</p>
	<p>Dynavin DVN UFT02 CAN-bus Adapter Installation Guide</p> <p>Installation guide for the Dynavin DVN UFT02 CAN-bus adapter, enabling steering wheel control for Dynavin radios in Fiat and Citroen vehicles. Details scope of delivery and connection instructions.</p>



[Dynavin D9-W204 Premium Flex Assembly Instructions for Mercedes C-Class W204](#)

Step-by-step assembly instructions for the Dynavin D9-W204 Premium Flex Android car stereo, designed for Mercedes C-Class W204 models (2007-2011).