

Manuals+

[Q & A](#) | [Deep Search](#) | [Upload](#)

manuals.plus /

› [Hangman](#) /

› [Hangman Elephant Ceiling Hook \(Model EH-N\) - Installation and Use Manual](#)

Hangman EH-N

Hangman Elephant Ceiling Hook (Model EH-N) - Installation and Use Manual

Brand: Hangman | Model: EH-N

1. INTRODUCTION

This manual provides detailed instructions for the safe and proper installation and use of your Hangman Elephant Ceiling Hook, Model EH-N. Please read all instructions carefully before installation to ensure optimal performance and safety.

2. PRODUCT OVERVIEW

The Hangman Elephant Ceiling Hook is a robust and versatile solution for hanging various items from your ceiling. Its patented design ensures secure attachment and features a 360-degree swivel for convenient positioning.

Key Features:

- Easy to install and remove.
- Corrosion-resistant construction.
- Patented solid metal hook automatically locks when weight is applied.
- 360-degree swivel for flexible item positioning.
- Safely holds 20 pounds when installed in drywall and 100 pounds when secured to a wooden ceiling joist.

Included Components:



Image: The package includes the main hook, a screw, and a drywall anchor for versatile installation.

- 1 x Elephant Ceiling Hook (Nickel finish)
- 1 x Mounting Screw
- 1 x Drywall Anchor (for drywall installations)

3. SAFETY INFORMATION

Always prioritize safety during installation and use. Failure to follow these guidelines may result in injury or damage to property.

- **Verify Ceiling Type:** Before drilling, accurately identify your ceiling material (wood joist, concrete, or drywall/hollow) to use the correct installation method and hardware.
- **Weight Limits:** Do not exceed the specified weight limits: 100 pounds (45 kg) for wood joist installation, and 20 pounds (9 kg) for drywall installation.
- **Secure Installation:** Ensure the hook is firmly secured and flush with the ceiling before hanging any items.
- **Professional Assistance:** If you are unsure about your ceiling type or installation process, consult a qualified professional.

4. SETUP AND INSTALLATION

The Hangman Elephant Ceiling Hook can be installed in various ceiling types. Follow the instructions below based on your specific ceiling material.

General Installation Steps:

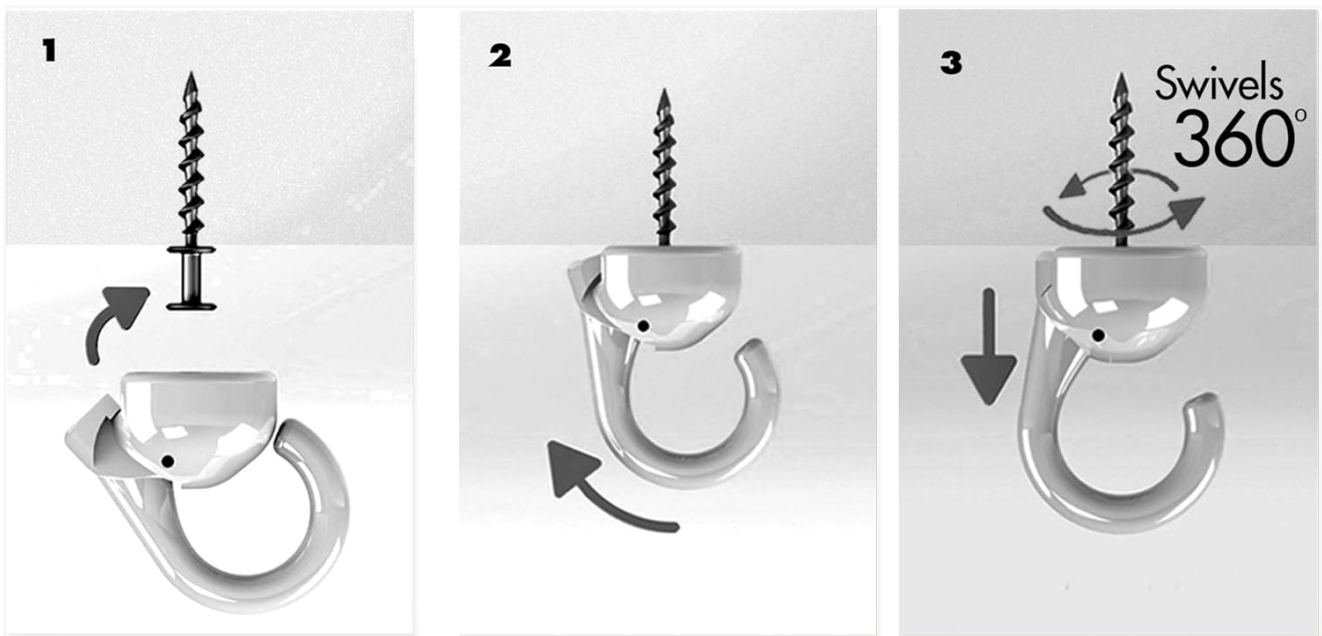


Image: Visual guide for the general installation process of the ceiling hook.

Installation in a Wooden Ceiling Joist:

1. **Locate Joist:** Use a stud finder to locate a wooden ceiling joist at your desired installation spot.
2. **Drill Pilot Hole:** Using a power drill, drill a 5/32-inch (4 mm) pilot hole vertically into the center of the wooden joist.
3. **Attach Hook to Screw:** Thread the ceiling hook onto the provided mounting screw.
4. **Install Hook:** Align the screw with the pilot hole. Push the hook slightly towards the hole and hand-tighten until the hook is flush with the ceiling. Ensure it is securely fastened.

Installation in Drywall or Hollow Ceiling:

1. **Drill Hole:** Using a power drill, drill a 9/16 to 19/32-inch (14-15 mm) hole through the drywall. Ensure you drill completely through the drywall.
2. **Prepare Anchor:** Attach the hook to the long bolt and toggle anchor. Squeeze the toggle wings together.
3. **Insert Anchor:** Align the squeezed toggle wings with the drilled hole. Gently twist as you insert the toggle wing into the hole until it opens inside the hollow space.
4. **Secure Hook:** Pull down on the hook to engage the toggle wings against the inside of the drywall. Rotate the hook clockwise until it is securely fixed and flush with the ceiling.

Installation in a Concrete Ceiling:

1. **Drill Hole:** Using a power drill or hammer drill with a 15/64-inch (6 mm) masonry drill bit, drill a hole approximately 1.6 inches (4 cm) deep vertically into the concrete ceiling at the marked spot.
2. **Insert Plastic Anchor:** Insert the provided plastic expansion tube (anchor) fully into the drilled hole.
3. **Attach Hook to Screw:** Thread the ceiling hook onto the provided mounting screw.
4. **Install Hook:** Align the screw with the plastic anchor. Push the hook slightly towards the hole and hand-tighten until the hook is flush with the ceiling. Ensure it is securely fastened.

Visual Installation Guide:

Your browser does not support the video tag.

Video: A quick guide demonstrating the installation of ceiling hooks for various ceiling types, including drywall and wood.

5. OPERATING INSTRUCTIONS

Once installed, the Hangman Elephant Ceiling Hook is ready for use.

- **Hanging Items:** Simply place the item's hanging mechanism (e.g., chain, rope, wire) onto the hook. The patented design ensures the hook automatically locks when weight is applied, providing a secure hold.
- **360° Swivel:** The hook can swivel 360 degrees, allowing you to easily adjust the orientation of your hanging item without needing to remove it. This is particularly useful for plants to ensure even light exposure or for decorative items to achieve the perfect angle.



Image: Example of the ceiling hook in use, supporting hanging plants.

6. MAINTENANCE

To ensure the longevity and continued safe operation of your ceiling hook, consider the following maintenance tips:

- **Regular Inspection:** Periodically check the hook and its mounting point for any signs of wear, damage, or loosening.
- **Cleaning:** Wipe the hook with a soft, damp cloth to remove dust or dirt. Avoid abrasive cleaners that could damage the finish.
- **Corrosion Resistance:** While the hook is corrosion-resistant, prolonged exposure to harsh outdoor elements may eventually affect its appearance. Regular cleaning can help maintain its condition.

7. TROUBLESHOOTING

If you encounter any issues with your Hangman Elephant Ceiling Hook, refer to the following common troubleshooting steps:

- **Hook Feels Loose:** If the hook feels loose after installation, gently re-tighten it by hand. If it continues to loosen, re-evaluate the installation method for your ceiling type and ensure the correct anchor/screw is used.
- **Item Exceeds Weight Limit:** If the hook appears to be struggling to hold an item, immediately remove the item and verify its weight against the hook's capacity for your specific installation type (20 lbs for drywall, 100

lbs for wood joist).

- **Difficulty Swiveling:** Ensure no debris or paint is obstructing the swivel mechanism. A small amount of silicone spray (avoiding contact with the ceiling) can sometimes help if the swivel feels stiff.

8. SPECIFICATIONS

Feature	Detail
Brand	Hangman
Model Number	EH-N
Color	Nickel
Material	Metal, Wood
Finish Type	Nickel
Mounting Type	Ceiling Mount
Style	Traditional
Weight Limit (Wood Joist)	100 Pounds (45 kg)
Weight Limit (Drywall)	20 Pounds (9 kg)
Special Feature	Rust Resistant, 360° Swivel
Recommended Uses	Ceiling hanging for plants, decorations, etc.
Shape	J-shape
Item Weight	1.6 Ounces (45 g)
Product Dimensions	7.5 x 3.6 x 1.2 inches (19 x 9.1 x 3 cm)
Number of Hooks	1
UPC	681391209601

9. WARRANTY AND SUPPORT

This product comes with a standard manufacturer's warranty. For specific warranty details or technical support, please refer to the product packaging or contact Hangman customer service directly. Contact information can typically be found on the official Hangman website or product packaging.