

Manuals+

[Q & A](#) | [Deep Search](#) | [Upload](#)

[manuals.plus](#) /

› [Cat Mate](#) /

› [Cat Mate Microchip Activated Cat Flap Instruction Manual](#)

Cat Mate 80869

Cat Mate Microchip Activated Cat Flap Instruction Manual

Model: 80869

INTRODUCTION

Thank you for choosing the Cat Mate Microchip Activated Cat Flap. This innovative product provides secure and convenient access for your cat while preventing entry by unwanted animals. It operates by recognizing your cat's unique implanted microchip or a Cat Mate I.D. disc (sold separately), ensuring only authorized pets can enter your home. This manual provides detailed instructions for installation, operation, and maintenance to ensure optimal performance and longevity of your cat flap.



Front view of the Cat Mate Microchip Activated Cat Flap.

Only paired pets have access to their home



Keep out the neighbour's cat



Stop wildlife coming in



Draft and weather proof



Microchip and I.D. disc compatible
I.D. discs available separately



The microchip activation feature ensures only your paired pets have access, keeping out neighborhood cats and wildlife. It is also designed to be draft and weather-proof.

SAFETY INFORMATION

- Read all instructions carefully before installation and use.
- This product is designed for cats and small dogs only.
- Keep packaging materials away from children and pets to prevent choking hazards.
- Ensure proper installation to prevent injury to pets or humans.
- Do not attempt to modify or repair the unit yourself. Contact customer support for assistance.
- Batteries should be inserted with the correct polarity. Do not mix old and new batteries or different types of batteries.

PACKAGE CONTENTS

Please check that all components are present before beginning installation:

- 1 x Cat Mate Microchip Activated Cat Flap (Model 80869)
- Installation screws and caps
- Instruction Manual

Note: 4 x AA batteries are required for operation and are not included. Cat Mate I.D. discs are available separately if your pet does not have an implanted microchip.

SETUP AND INSTALLATION

1. Battery Installation

1. Locate the battery compartment on the top of the cat flap unit.
2. Open the battery compartment cover.
3. Insert 4 x AA batteries, ensuring correct polarity (+/-) as indicated inside the compartment.
4. Close the battery compartment cover securely.

2. Microchip Programming

The cat flap can store up to 30 unique microchip IDs. To program your cat's microchip:

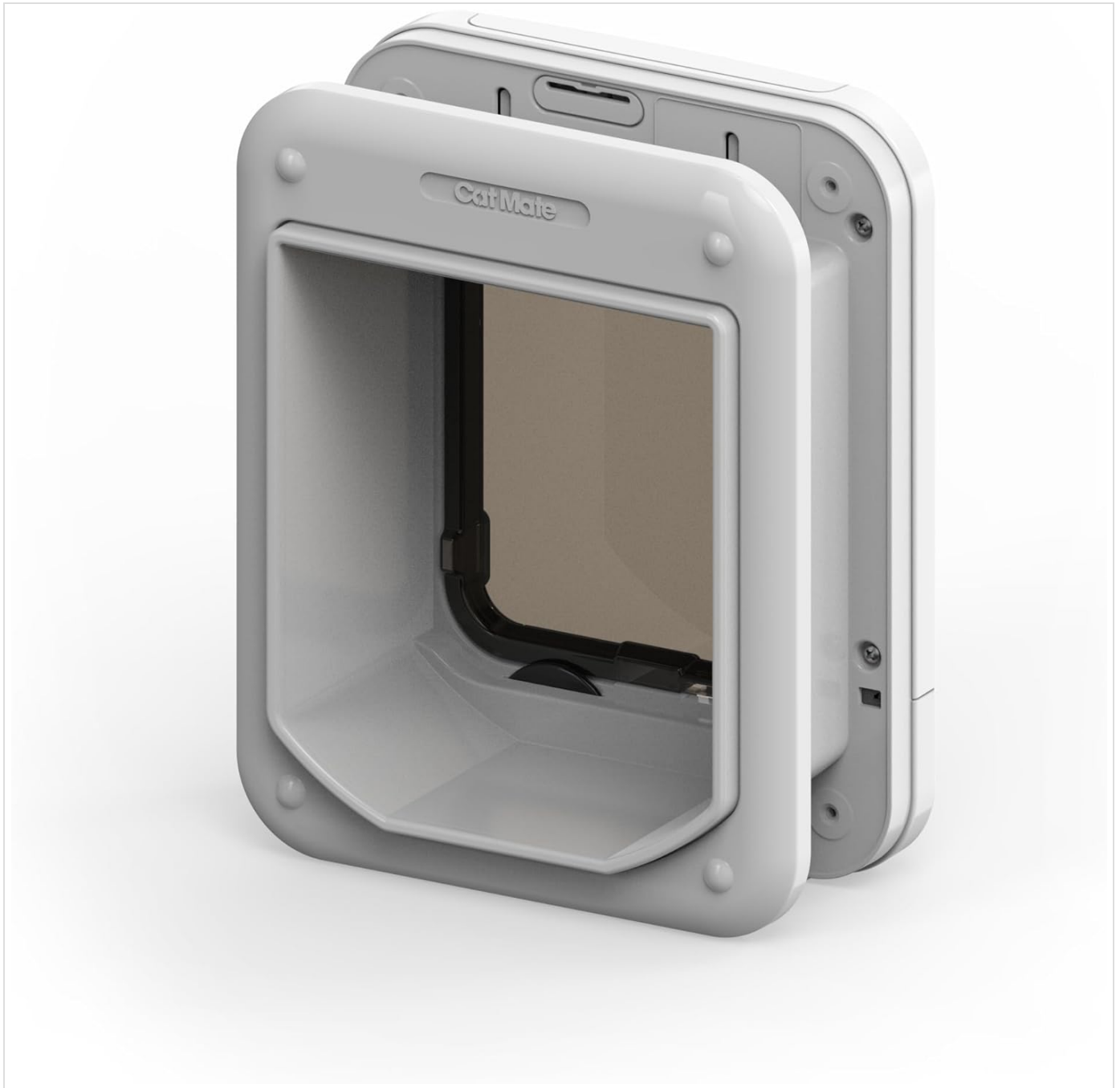
1. Press and hold the programming button (usually located near the top of the unit, often indicated by a paw print or 'P' symbol) until the LED indicator light begins to flash.
2. Gently guide your cat through the cat flap. Ensure their microchip passes close to the reader.
3. The LED indicator will flash rapidly and/or emit a sound to confirm the microchip has been successfully registered.
4. Repeat for all cats you wish to grant access.
5. The cat flap will automatically exit programming mode after a short period of inactivity or if the button is pressed again.

3. Installation

The Cat Mate Microchip Activated Cat Flap is suitable for installation in UPVC doors, glass, and wooden doors. It self-lines to 85mm (3 3/8 inches) thick. For glass panels or thicker installations, an adapter kit may be required (sold separately).



An installed Cat Mate Microchip Activated Cat Flap in a wall, with a cat nearby.



The cat flap shown with its integrated tunnel, suitable for various door thicknesses.

General Installation Steps:

1. Determine the optimal height for installation, ensuring your cat can comfortably pass through.
2. Use the provided template (if included) or measure the dimensions of the cat flap opening to mark the cutting line on your door or wall.
3. Carefully cut the opening using appropriate tools for your door material.
4. Position the cat flap in the opening and secure it with the provided screws. Ensure it is level and flush with the surface.
5. Attach the screw caps for a neat finish.

OPERATING THE CAT FLAP

The Cat Mate Microchip Activated Cat Flap features a 4-way rotary lock, allowing you to control your pet's access.

Manually change your pet's access



Unlocked



Out only



In only



Locked



Give them the freedom to roam without causing drafts



Stop them going out overnight to protect the wildlife

Visual representation of the four lock settings: Unlocked, In Only, Out Only, and Locked.



A close-up view of the rotary knob for selecting the desired access mode.

Rotate the central knob to select one of the following settings:

- **Unlocked (Fully Open):** Allows free entry and exit for all pets. The microchip reader is inactive in this mode.
- **In Only:** Allows microchip-activated entry but prevents exit. Ideal for keeping your pet indoors at night.
- **Out Only:** Allows exit but prevents microchip-activated entry. Useful for letting your pet out without allowing them back in immediately.
- **Locked (Fully Closed):** Prevents both entry and exit.

MAINTENANCE


- **Cleaning:** The cat flap is made of super-tough wipe-clean plastic. Clean the unit regularly with a damp cloth and mild detergent. Avoid abrasive cleaners.
- **Flap Condition:** Periodically check the transparent flap and brush seal for any signs of wear or damage. A fully brush-sealed flap with magnetic closure helps maintain weatherproofing.
- **Battery Replacement:** Replace batteries approximately every 12 months, or when the low battery indicator (if present) illuminates. Always replace all 4 AA batteries at the same time.

TROUBLESHOOTING


Problem	Possible Cause	Solution
---------	----------------	----------


Problem	Possible Cause	Solution
Cat flap not opening for my pet.	Pet's microchip not programmed; low batteries; incorrect lock setting.	Ensure microchip is programmed (see Setup); replace batteries; check 4-way lock is not on 'Locked' or 'Out Only'.
Unwanted animals entering.	Incorrect lock setting; faulty microchip reader.	Ensure 4-way lock is on 'In Only' or 'Locked'; contact customer support if reader is suspected to be faulty.
Flap not closing properly.	Debris in the flap mechanism; damaged brush seal or magnet.	Clean the flap area; inspect brush seal and magnet for damage.
Short battery life.	Poor quality batteries; high usage.	Use high-quality alkaline batteries; ensure the flap is not constantly triggered unnecessarily.

SPECIFICATIONS



Suitable for
medium cats





15cm
5.5"

15cm
5.5"

Key dimensions of the Cat Mate Microchip Activated Cat Flap.

Feature	Detail
Model Number	80869
Brand	Cat Mate
Color	White
Power Source	4 x AA Batteries (not included)
Battery Life (Approx.)	12 months
Maximum Microchip Capacity	30 cats
Self-Lining Thickness	Up to 85 mm (3 3/8 inches)
Flap Type	Transparent, brush-sealed with magnetic closure
Locking Mechanism	4-way rotary lock
Material	Super-tough wipe-clean plastic
Item Weight	0.94 Kilograms (2.07 pounds)
Product Dimensions (LxWxH)	4.33 x 7.87 x 9.84 inches

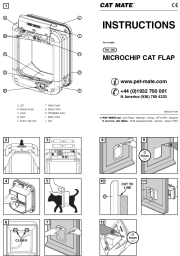

WARRANTY AND SUPPORT


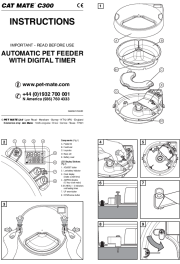


The Cat Mate Microchip Activated Cat Flap comes with a **3-year warranty** from the date of purchase. This warranty covers defects in materials and workmanship under normal use.

For warranty claims, technical support, or any questions regarding your product, please contact Cat Mate customer service. Keep your proof of purchase for warranty validation.

For further assistance, please visit the official Cat Mate website or refer to the contact information provided on the product packaging.

Related Documents - 80869

	<p>Cat Mate Microchip Cat Flap Installation and Operation Manual</p> <p>Comprehensive instructions for installing and operating the Cat Mate Microchip Cat Flap, including programming, access options, troubleshooting, and maintenance.</p>
	<p>Cat Mate C300 Automatic Pet Feeder with Digital Timer - Instructions</p> <p>Comprehensive instructions for setting up and operating the Cat Mate C300 Automatic Pet Feeder, including safety guidelines, component identification, and programming meal times for pets.</p>

	<p>Cat Mate C100/C200 Automatic Pet Feeder: Instructions and Safety Guide</p> <p>Comprehensive instructions for the Cat Mate C100 and C200 automatic pet feeders, covering setup, operation, feeding, cleaning, and safety guidelines for pet owners.</p>
	<p>Cat Mate C300 Automatic Pet Feeder: Instructions and Guide</p> <p>Detailed instructions for setting up and operating the Cat Mate C300 Automatic Pet Feeder with Digital Timer. Learn about battery installation, clock and meal time settings, testing, cleaning, and maintenance.</p>
	<p>Cat Mate C3000 Automatic Dry Food Pet Feeder - Instructions and Guide</p> <p>Comprehensive instructions and guide for the Cat Mate C3000 Automatic Dry Food Pet Feeder, covering setup, operation, safety, and troubleshooting. Learn how to program meals, set feeding times, and maintain your pet feeder.</p>
	<p>Cat Mate C300 Automatic Pet Feeder: Instructions and Guide</p> <p>Comprehensive instructions for setting up and using the Cat Mate C300 Automatic Pet Feeder with Digital Timer, including safety guidelines, component identification, operation, and maintenance.</p>