

HUTT W66

HUTT W66 Smart Window Cleaning Robot User Manual

Model: W66

1. INTRODUCTION

The HUTT W66 Smart Window Cleaning Robot is designed to provide efficient and hands-free cleaning for various window surfaces. Featuring intelligent route planning and an exclusive automatic water spray system, it ensures thorough cleaning while maintaining optimal humidity for the cleaning cloth. Its advanced sensors and powerful suction make window cleaning safer and more convenient.

2. SAFETY INFORMATION

Please read all safety instructions carefully before using the product. Failure to follow these instructions may result in electric shock, fire, or serious injury.

- Always attach the safety climbing rope securely before operation, especially for high-rise windows. The robot features a professional climbing grade safety rope for fall protection.
- Ensure the power cord is securely connected and not damaged. The robot has power failure protection, but a stable power supply is crucial.
- Do not use the robot on cracked or damaged glass surfaces.
- Keep hands, hair, and loose clothing away from moving parts during operation.
- Do not immerse the robot in water or other liquids.
- Use only the specified cleaning solution or distilled water in the water tank.
- Supervise the robot during its first few uses to ensure proper operation and safety.
- Store the robot in a cool, dry place when not in use.

MULTI-LEVELS OF SAFETY GUARANTEE

- UPS from Sudden Power Failure Protection
- Safety Climbing Ropes for Fall Protection

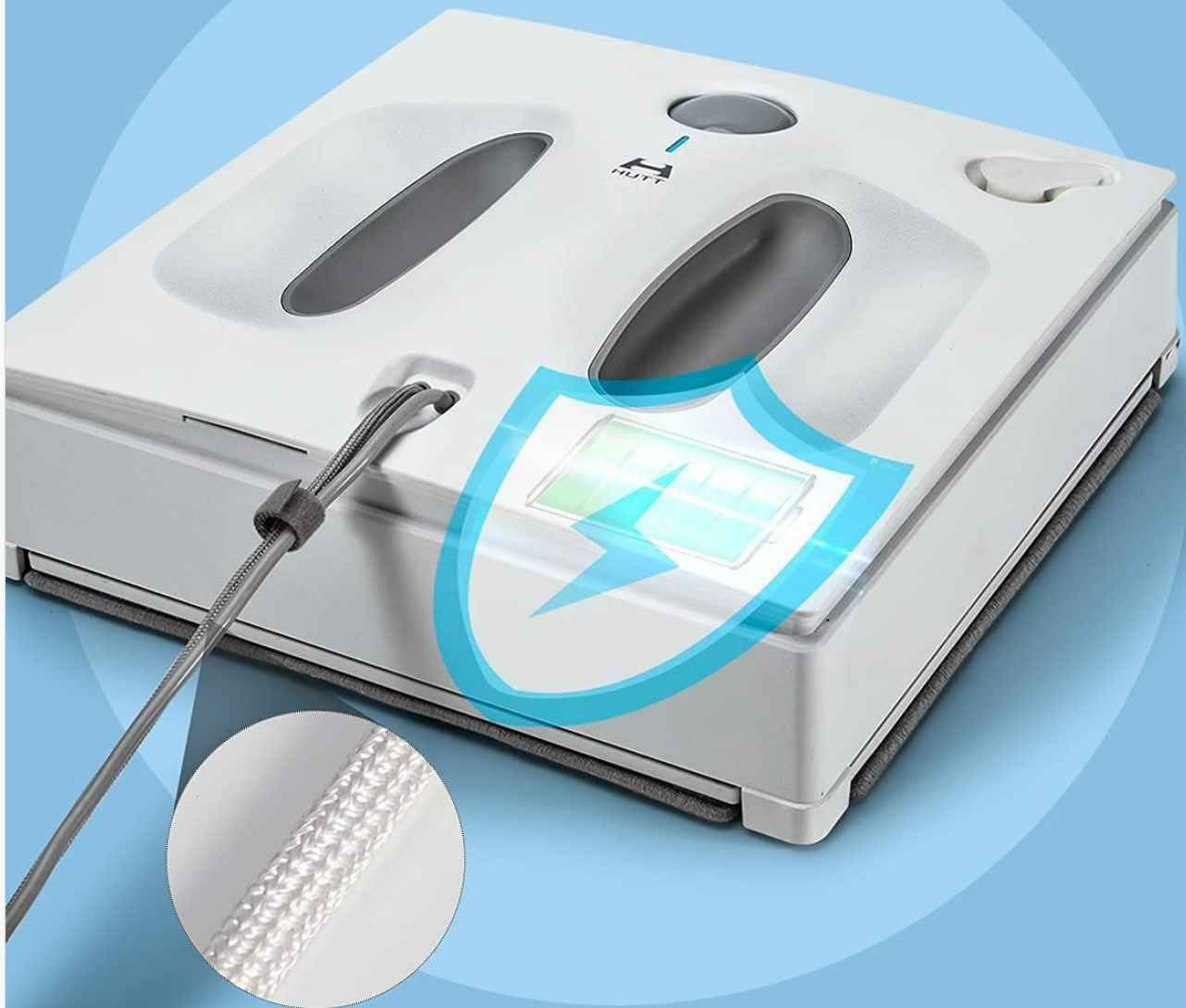


Image Description: This image illustrates the multi-level safety guarantees of the HUTT W66 robot, including UPS from sudden power failure protection and safety climbing ropes for fall protection. A shield icon with a lightning bolt symbolizes power protection, and a close-up shows the braided safety rope.

3. PACKAGE CONTENTS

Upon opening the package, please verify that all the following items are included:

- HUTT W66 Smart Window Cleaning Robot
- Remote Control

- Power Adapter and Cable
- Safety Rope
- Microfiber Cleaning Pads
- Water Filling Bottle
- Storage Carrying Case
- User Manual (this document)



Image Description: This image displays the main components included with the HUTT W66 Smart Window Cleaning Robot: the robot itself, its remote control, and a grey zippered carrying case for convenient storage and transport.



Comes with a
suitcase for storage

Image Description: This image shows the HUTT W66 robot being placed into or stored within its custom-fit carrying case, emphasizing its portability and organized storage solution.

4. PRODUCT OVERVIEW

Familiarize yourself with the main components of your HUTT W66 Smart Window Cleaning Robot:

- **Main Body:** Houses the motor, water tank, sensors, and control unit.
- **Cleaning Pads:** Two circular pads on the underside for wiping surfaces.
- **Water Spray Nozzles:** Located on the underside, for automatic water spraying.
- **Power Button/Indicator Light:** On the top surface for manual control and status indication.
- **Safety Rope Attachment Point:** For securing the safety rope.
- **Remote Control:** For wireless operation and mode selection.

150ML ELECTRONICALLY WATER TANK

meet the adsorption and mopping simultaneously



Image Description: This image provides an internal view of the HUTT W66 robot, highlighting its 150ml electronically controlled water tank. The blue glow indicates the water reservoir and internal mechanisms responsible for the automatic water spray function.

IC VOICE BROADCAST REMOTE CONTROL

Keep knowing the status of the machine



Image Description: This image shows the HUTT W66 robot alongside its remote control, emphasizing its IC voice broadcast feature. Icons for a microphone and remote control are displayed, indicating the robot's ability to communicate its status and be controlled wirelessly.

5. SETUP

1. **Charge the Robot:** Before first use, fully charge the robot's internal battery. Connect the power adapter to the robot and a power outlet. The indicator light will show charging status.
2. **Attach Cleaning Pads:** Securely attach the clean microfiber cleaning pads to the designated areas on the

underside of the robot. Ensure they are properly aligned.

3. **Fill Water Tank:** Open the water tank cap and fill the 150ml tank with clean water or a recommended window cleaning solution using the provided filling bottle. Close the cap tightly.
4. **Attach Safety Rope:** Always attach the safety rope to a secure anchor point indoors, such as a sturdy furniture leg or a dedicated anchor. Ensure the rope is taut but allows the robot full range of motion on the window.
5. **Power On:** Press and hold the power button on the robot until the indicator light illuminates.

6. OPERATING INSTRUCTIONS

The HUTT W66 offers intelligent cleaning modes for optimal performance.

6.1. Placement and Start

1. Ensure the window surface is free of large debris that could scratch the glass or impede the robot.
2. Place the robot firmly on the window surface, ensuring both cleaning pads make full contact. The robot will automatically suction onto the glass.
3. Press the power button on the robot or the 'Auto' button on the remote control to begin cleaning.

6.2. Cleaning Modes

The robot features three primary cleaning modes:

- **Auto Mode:** (Default) The robot intelligently plans its cleaning path (N+Z shape) and automatically adjusts suction power based on surface cleanliness. This mode is activated by a single button press.
- **Depth Mode:** The robot performs a more thorough cleaning, wiping the surface twice in an N+Z pattern. Select this mode via the remote control for heavily soiled windows.
- **Fixed Point Mode:** Allows you to control the robot's movement to clean specific areas. Use the directional buttons on the remote control for precise cleaning.

LIDAR NAVIGATION Z-PLANNING CLEANING

With the edge sensor,
to realize safely borderless glass wiping



Image Description: This image illustrates the HUTT W66 robot's LIDAR navigation and Z-planning cleaning pattern on a window. It shows the robot's intelligent path planning, obstacle avoidance, and ability to return to its starting point, ensuring comprehensive coverage.

2600PA FRENQUENCY STRONG SUCTION

auto recognize dirty surface,
increase the pressure.



DUST



BIRD DROPPING



MUD POINT



WALL GRAY



Image Description: This image highlights the HUTT W66 robot's 2600Pa strong suction power, which allows it to automatically recognize dirty surfaces and increase pressure for effective cleaning. Icons depict various types of dirt it can remove, including dust, bird droppings, mud, and wall gray.

6.3. Automatic Water Spray

The HUTT W66 features an exclusive 150ml water tank and micro-controlled automatic water spray. This system ensures the cleaning pads remain optimally humid throughout the cleaning process, preventing streaks and improving cleaning efficiency.

6.4. Stopping Operation

To stop the robot, press the power button on the robot or the 'Stop' button on the remote control. The robot will cease movement and maintain suction. Carefully remove the robot from the window by holding its handle and gently pulling it away from the glass.

7. MAINTENANCE

Regular maintenance ensures the longevity and optimal performance of your HUTT W66 robot.

- **Clean Cleaning Pads:** After each use, remove the microfiber cleaning pads and wash them with mild detergent and water. Allow them to air dry completely before reattaching or storing.
- **Empty Water Tank:** If any water remains in the tank after cleaning, empty it to prevent stagnation and potential buildup.
- **Clean Sensors:** Periodically wipe the robot's sensors (located around the edges and underside) with a soft, dry cloth to ensure accurate detection and navigation.
- **Inspect Safety Rope:** Before each use, inspect the safety rope for any signs of wear, fraying, or damage. Replace if necessary.
- **Store Properly:** When not in use, store the robot and its accessories in the provided carrying case in a cool, dry place, away from direct sunlight.

8. TROUBLESHOOTING

| Problem | Possible Cause | Solution |
|-----------------------------------|--|---|
| Robot does not suction to window. | Insufficient power; dirty cleaning pads; uneven surface. | Ensure robot is fully charged and connected to power. Clean or replace cleaning pads. Ensure surface is flat and clean. |
| Robot leaves streaks. | Dirty cleaning pads; improper cleaning solution; water tank empty. | Wash or replace cleaning pads. Use distilled water or recommended solution. Refill water tank. |
| Robot stops unexpectedly. | Low battery; power disconnection; obstacle detected. | Recharge robot. Check power connection. Clear any obstacles. |
| Remote control not working. | Dead batteries; obstruction. | Replace remote control batteries. Ensure no obstruction between remote and robot. |

9. SPECIFICATIONS

| Feature | Detail |
|------------|--------|
| Brand | HUTT |
| Model Name | W66 |

| Feature | Detail |
|------------------------|--|
| Suction Power | 2600 Pa |
| Water Tank Capacity | 150 ml |
| Special Features | Portable, Lightweight, Wheels, Automatic Water Spray, Remote Control, Voice Broadcast, Anti-collision, Anti-drop sensors, UPS Power Failure Protection |
| Battery Life | Approximately 20 Minutes (for backup during power failure) |
| Power Source | Battery Powered (with AC adapter for operation) |
| Item Weight | 3 kg 300 g |
| Dimensions (L x W x H) | Approx. 231.5mm x 231.5mm x 76mm (7.6cm thin body) |
| Filter Type | HEPA |

Smaller Size, Easy to Carry

7.6cm ultra-thin body, anti-theft window can also be wiped, can be operated with one hand
23.1mm*231.5mm*76mm

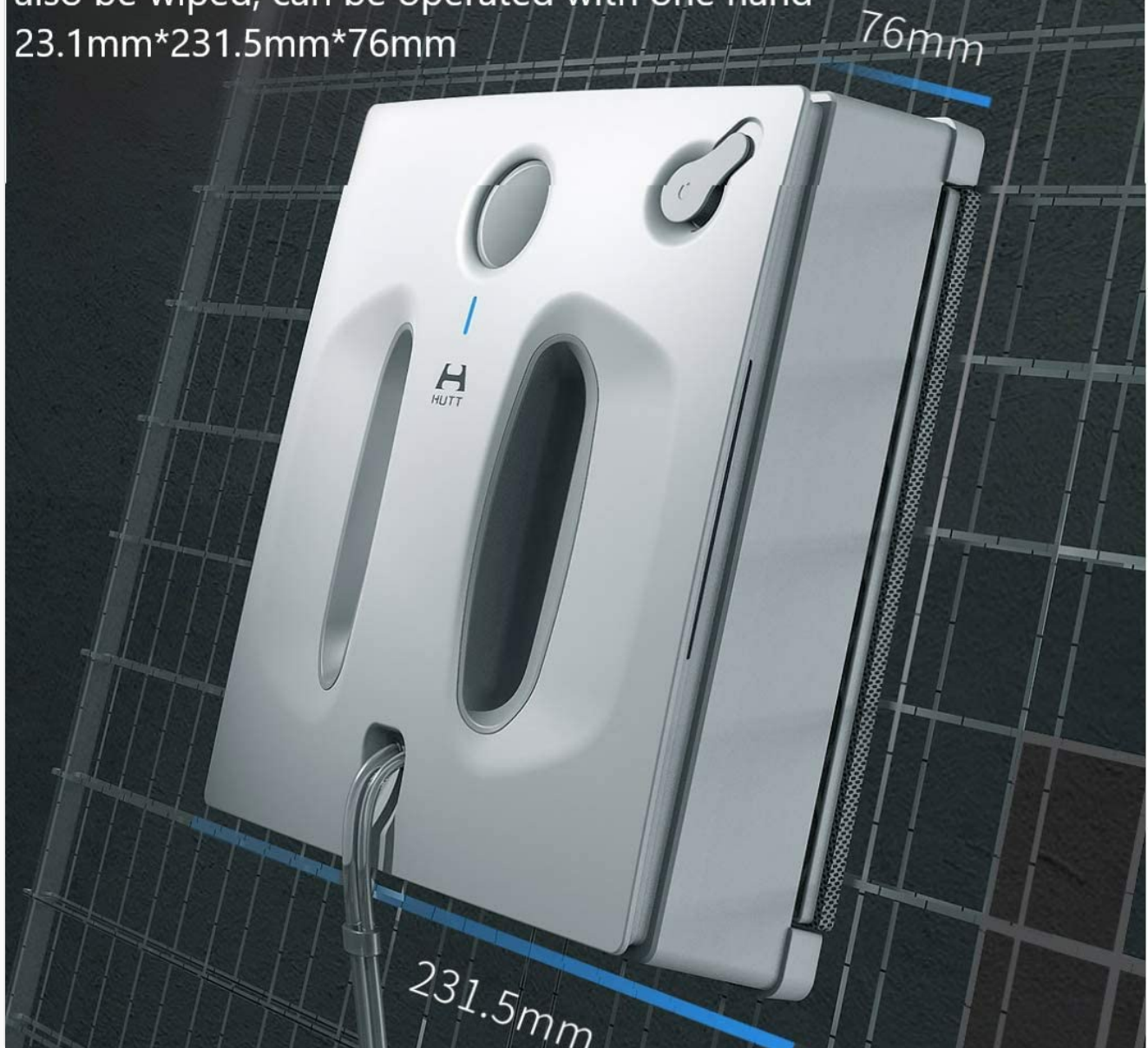


Image Description: This image highlights the compact dimensions of the HUTT W66 robot, specifically its ultra-thin 7.6cm body, making it easy to handle and suitable for various window types.

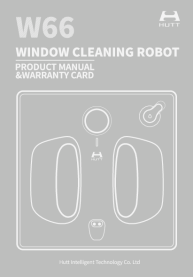

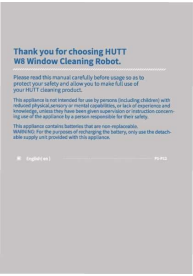
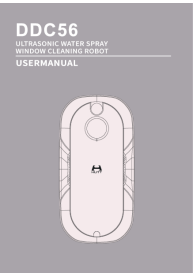
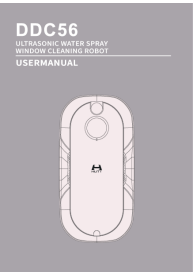

10. WARRANTY AND SUPPORT

For warranty information and customer support, please refer to the warranty card included in your product packaging or visit the official HUTT website. You may also contact customer service through the retailer where you purchased the product.

For general inquiries or technical assistance, please have your product model (W66) and purchase details ready.

[Visit the Official HUTT Brand Page](#)

Related Documents - W66

| | |
|---|---|
|  | <p>HUTT WGS Window Cleaning Robot Product Manual & Warranty Card</p> <p>Comprehensive user manual and warranty information for the HUTT WGS Window Cleaning Robot. Learn about product features, installation, operation, maintenance, and troubleshooting.</p> |
|  | <p>HUTT Window Cleaning Robot W66 User Manual and Operating Guide</p> <p>Comprehensive user manual for the HUTT Window Cleaning Robot W66, covering product overview, usage instructions, troubleshooting, technical specifications, and safety precautions.</p> |
|  | <p>HUTT W8 Window Cleaning Robot User Manual - Operation, Safety, and Troubleshooting</p> <p>Comprehensive user manual for the HUTT W8 Window Cleaning Robot. Learn about product features, installation, operation, maintenance, safety precautions, troubleshooting, and technical specifications.</p> |
|  | <p>HUTT DDC56 Ultrasonic Water Spray Window Cleaning Robot User Manual</p> <p>Comprehensive user manual for the HUTT DDC56 Ultrasonic Water Spray Window Cleaning Robot, covering installation, operation, safety precautions, troubleshooting, and maintenance.</p> |
|  | <p>HUTT DDC56 Ultrasonic Water Spray Window Cleaning Robot User Manual</p> <p>User manual for the HUTT DDC56 Ultrasonic Water Spray Window Cleaning Robot, covering important safeguards, parts list, installation instructions, operation, path planning, troubleshooting, safety, and technical specifications.</p> |
|  | <p>HUTT DDC56 Ultrasonic Water Spray Window Cleaning Robot User Manual</p> <p>User manual for the HUTT DDC56 Ultrasonic Water Spray Window Cleaning Robot, detailing setup, operation, safety, and troubleshooting for efficient automated window cleaning.</p> |

