

LG EBR74164805

LG EBR74164805 Relay Control Board Instruction Manual

Model: EBR74164805 | Brand: LG

1. INTRODUCTION

This manual provides essential information for the installation, operation, maintenance, and troubleshooting of the LG EBR74164805 Relay Control Board. This genuine OEM part is designed to regulate oven elements in compatible LG Range/Stove/Ovens by receiving signals from the main oven control board. Proper installation and understanding of its function are crucial for the safe and efficient operation of your appliance.

2. SAFETY INFORMATION

WARNING: Before attempting any installation, repair, or maintenance on your appliance, always disconnect all utilities, including electrical power and gas supply (if applicable), to prevent electric shock, fire, or personal injury. It is recommended that installation be performed by a qualified technician. Wear appropriate personal protective equipment, such as gloves and safety glasses.

This product contains chemicals known to the State of California to cause cancer and birth defects or other reproductive harm. For more information, visit www.P65Warnings.ca.gov.

3. PACKAGE CONTENTS

- 1 x LG EBR74164805 Relay Control Board

4. INSTALLATION INSTRUCTIONS

The following steps outline the general procedure for replacing the relay control board. Always refer to your specific appliance's service manual for detailed instructions and diagrams, as procedures may vary by model.

1. **Disconnect Power:** Ensure the appliance is completely disconnected from its power source.
2. **Access the Control Board:** Depending on your oven model, you may need to remove the back panel or other access panels to reach the existing relay control board.
3. **Document Connections:** Before disconnecting any wires, take clear photographs of all wire connections to the existing board. This will serve as a reference for reconnecting the new board.
4. **Disconnect Wires:** Carefully disconnect all wire harnesses and individual wires from the old relay control board.

5. **Remove Old Board:** Unscrew or unclip the old relay control board from its mounting brackets.
6. **Install New Board:** Position the new LG EBR74164805 Relay Control Board in place and secure it with screws or clips.
7. **Reconnect Wires:** Using your photographs as a guide, carefully reconnect all wire harnesses and individual wires to the corresponding terminals on the new board. Ensure all connections are secure.
8. **Reassemble Appliance:** Replace any access panels or components that were removed.
9. **Restore Power:** Reconnect the appliance to its power source.
10. **Test Functionality:** Test the oven's heating functions to ensure proper operation.

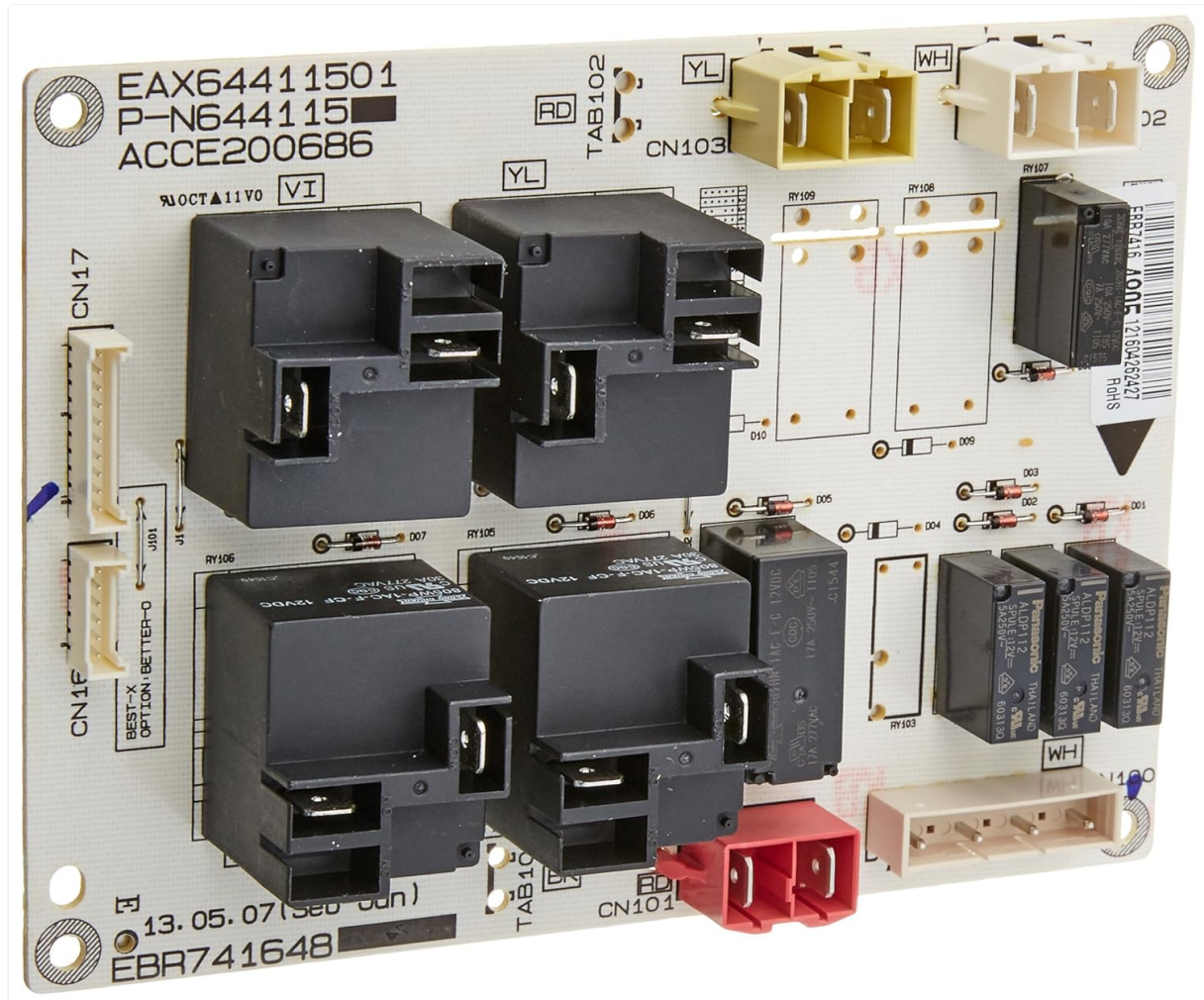


Figure 1: Front view of the LG EBR74164805 Relay Control Board, showing relays and connectors.

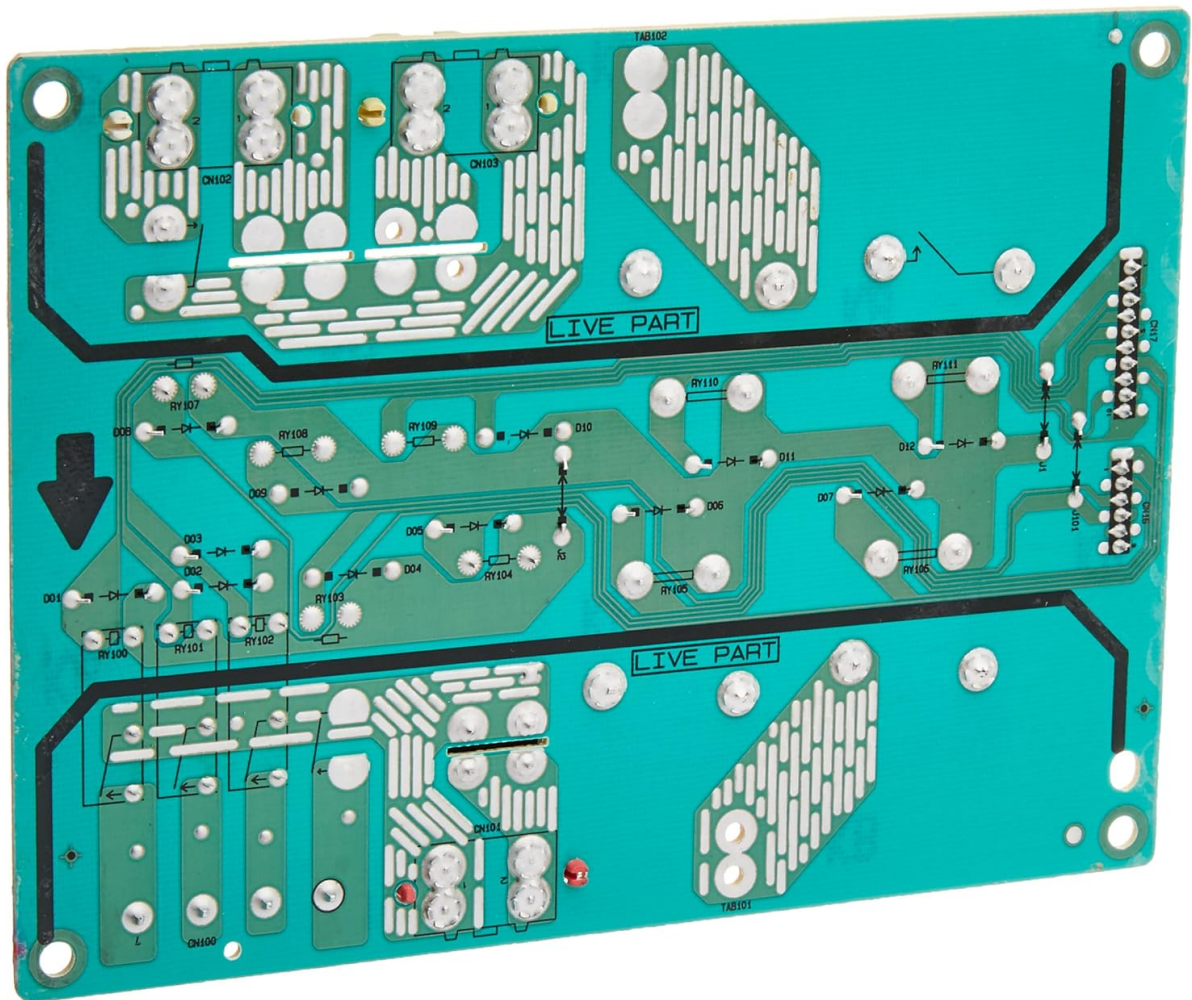
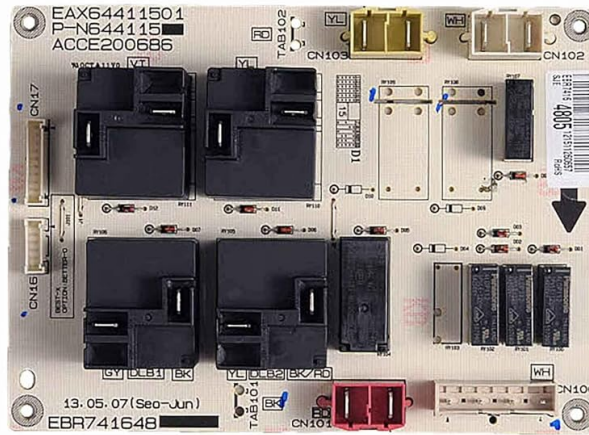


Figure 2: Rear view of the LG EBR74164805 Relay Control Board, displaying circuit traces and solder points.

Be Sure, Check First

Confirm part number
with appliance manufacturer.



Part # EBR74164805
Relay Control Board
Genuine OEM Replacement Parts

Figure 3: Image emphasizing the importance of confirming the part number with the appliance manufacturer before installation.

EBR74164805

Length: 6 inches
Width: 4.37 inches
Height: 1.25 inches

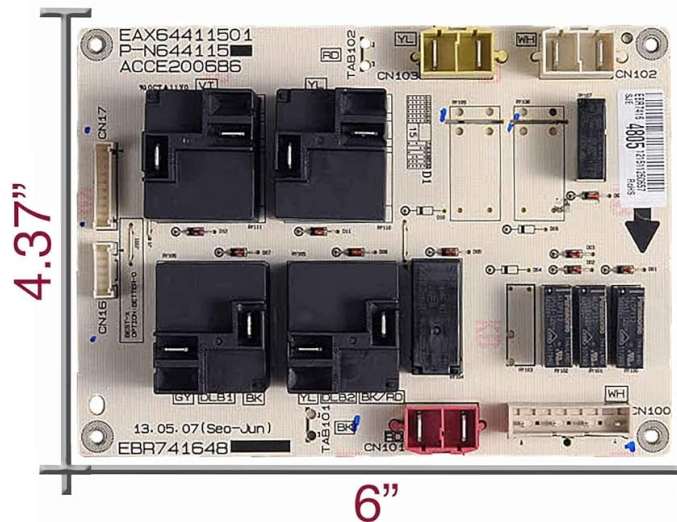


Figure 4: Dimensions of the LG EBR74164805 Relay Control Board: 6 inches length, 4.37 inches width, 1.25 inches height.

5. OPERATING PRINCIPLES

The LG EBR74164805 Relay Control Board acts as an intermediary between the main oven control board and the heating elements (bake and broil). It receives electrical signals from the main control board, which dictate when and how much power should be supplied to the oven's heating elements. The relays on this board then open or close to regulate the flow of electricity, ensuring the oven reaches and maintains the desired temperature for cooking.

6. MAINTENANCE

The relay control board is a sealed electronic component and generally does not require routine maintenance. However, periodic inspection during other appliance servicing can help identify potential issues early. Ensure the area around the board is free from dust, debris, and moisture. If any signs of damage or overheating are observed, the board should be inspected by a qualified technician.

7. TROUBLESHOOTING

If your LG oven is experiencing heating issues, the relay control board may be a contributing factor. Below are

common symptoms and potential solutions:

- **Oven Not Heating:** If the oven does not heat at all, or heats inconsistently, the relays on the board might be faulty.
- **Oven Not Reaching Desired Temperature:** This can indicate a relay failing to close properly, preventing full power to the heating elements.
- **Oven Overheating:** A relay stuck in the closed position could cause continuous heating.
- **Error Codes:** Specific error codes on your oven's display may point to a control board issue. Consult your oven's main user manual for error code definitions.

Before replacing the board:

- Verify that the heating elements themselves are not faulty.
- Check all wire connections to ensure they are secure and free from corrosion or damage.
- Ensure the oven's temperature sensor (thermistor) is functioning correctly.

If these checks do not resolve the issue, replacement of the relay control board may be necessary.

Relevant Product Videos

Video 1: Overview of the EBR74164805 Range Stove Ovens Relay Control Board, demonstrating its features and compatibility. This video is provided by AUGXparts, a seller of the product.

Video 2: Detailed look at the EBR74164805 Range Oven Relay Control Board, highlighting its components and function. This video is provided by APSFY, a seller of the product.

Video 3: Presentation of the EBR74164805 for LG stove oven relay control board, focusing on its role in oven operation. This video is provided by shenbaodawujinzhpin, a seller of the product.

8. SPECIFICATIONS

Brand	LG
Item Model Number	EBR74164805
Product Dimensions	7 x 6 x 1 inches; 8.64 ounces
Connector Type	Through Hole Or Surface Mount
Contact Type	Normally Open
Mounting Type	Surface Mount
Operation Mode	Automatic

9. WARRANTY AND SUPPORT

For warranty information or technical support regarding your LG EBR74164805 Relay Control Board, please refer to the documentation provided with your original LG appliance or contact LG customer service directly. As an OEM part, its warranty is typically covered under the original appliance's warranty terms or a specific replacement part warranty. Always ensure you are purchasing genuine LG parts for optimal performance and safety. You can visit the official LG website for support resources: [LG Support](#)

