

fischer FSL M12X80 D16

Fischer FSL M12x80 D16 Anchor Instruction Manual

Model: FSL M12X80 D16

INTRODUCTION

This manual provides comprehensive instructions for the safe and effective installation and use of the Fischer FSL M12x80 D16 Zinc-Plated Anchor. Please read this manual thoroughly before installation to ensure proper application and to prevent potential hazards.

PRODUCT OVERVIEW

The Fischer FSL M12x80 D16 is a heavy-duty, zinc-plated alloy steel anchor designed for secure fastening applications. It features an M12 thread size and a hex head style, suitable for various construction and industrial uses. This anchor is supplied in a box of 25 units.



Image: Fischer FSL M12x80 D16 Anchor. This image displays the main component of the anchor, showing its threaded end, expansion mechanism, and hex head bolt.

SAFETY INFORMATION

- Always wear appropriate personal protective equipment (PPE), including safety glasses and gloves, during installation.
- Ensure the substrate material is suitable for anchor installation and can support the intended load.
- Do not overtighten the anchor, as this can damage the substrate or the anchor itself.
- Consult local building codes and regulations before installation.
- Keep out of reach of children.

COMPONENTS

Each Fischer FSL M12x80 D16 anchor consists of the following primary components:

- **Anchor Body:** The main cylindrical part with an internal thread and expansion segments.
- **Hex Head Bolt:** The M12 bolt used to expand the anchor.
- **Washer:** Provides a bearing surface for the bolt head.

SETUP AND INSTALLATION

Follow these steps for proper installation of the Fischer FSL M12x80 D16 anchor:

1. **Drill Hole:** Using a suitable drill bit (refer to specifications for diameter), drill a hole to the required depth in the substrate material. Ensure the hole is clean and free of debris.
2. **Clean Hole:** Remove all dust and debris from the drilled hole using a brush and/or compressed air.
3. **Insert Anchor:** Insert the anchor body into the cleaned hole until it is flush with the surface of the substrate.
4. **Tighten Bolt:** Insert the hex head bolt and washer. Tighten the bolt using a wrench until the anchor expands and is securely fixed in the substrate. Refer to the manufacturer's recommended torque settings for optimal performance.

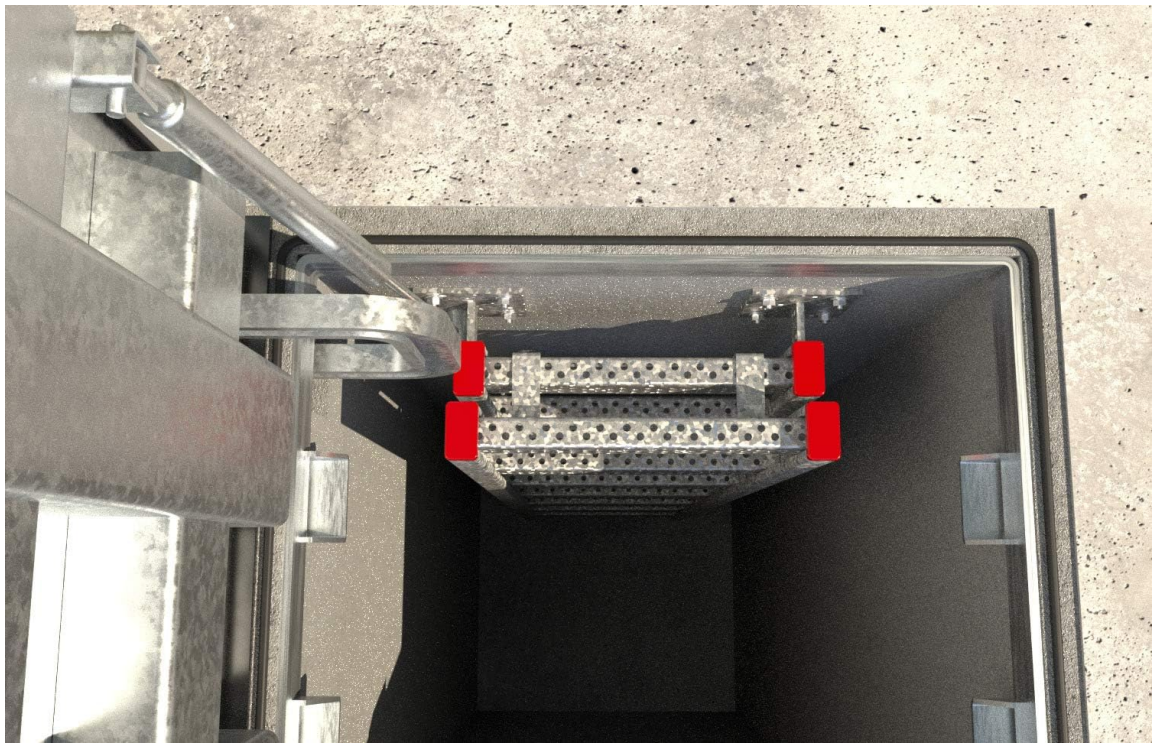


Image: A worker drilling into a concrete pillar, demonstrating a typical application scenario for heavy-duty anchors. This illustrates the initial step of preparing the substrate for anchor installation.



Image: An anchor system securing a wooden post to a concrete base. This demonstrates a completed installation, showing the anchor's function in heavy-duty fastening.

Fischer FSL M12x80 D16 anchors are designed for long-term, maintenance-free performance once properly installed. Periodic inspection of the fastened object and the anchor point is recommended to ensure continued security, especially in environments subject to vibration or extreme conditions. Check for any signs of loosening or corrosion.

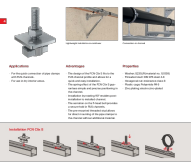
SPECIFICATIONS



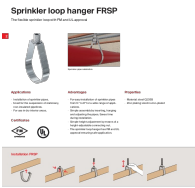
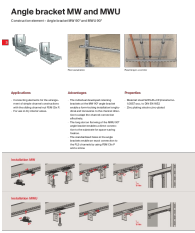

Feature	Detail
Model Number	FSL M12X80 D16
Part Number	045656
Material	Alloy Steel
Exterior Finish	Zinc-Plated
Thread Size	M12
Item Diameter	12 Millimeters
Head Style	Hex
Manufacturer Grade	Heavy-Duty
Number of Pieces	25
Item Weight	6.6 pounds (for 25 pieces)

SUPPORT

For technical assistance, product inquiries, or further information regarding Fischer products, please visit the official fischer website or contact their customer support services. You can find more information at the [fischer Store on Amazon](#).

Related Documents - FSL M12X80 D16

	<p>FCN Clix S T-Head Bolt: Technical Specifications and Installation Guide fischer</p> <p>Discover the fischer FCN Clix S T-head bolt, a versatile fastening solution for FUS channel systems. This document provides detailed technical data, load capacities, applications, advantages, and installation guidance for quick and easy fixing of pipe clamps.</p>
---	---

	<p>fischer Bolt Anchor FWA Plus: Declaration of Performance and Technical Specifications</p> <p>This document provides the Declaration of Performance for the fischer Bolt Anchor FWA Plus, detailing its technical specifications, mechanical resistance, safety in case of fire, and installation guidelines for use in concrete.</p>
	<p>fischer Anchor Channel FES with fischer Channel Bolts FBC - Declaration of Performance</p> <p>Technical declaration of performance for fischer Anchor Channel FES and fischer Channel Bolts FBC, detailing mechanical resistance, stability, fire safety, durability, and installation parameters. Includes comprehensive data tables and specifications for construction anchoring systems.</p>
	<p>Fischer Sprinkler Loop Hanger FRSP Technical Data and Applications</p> <p>Detailed information on the Fischer Sprinkler Loop Hanger FRSP, including applications, advantages, properties, technical specifications, and installation guide. Features FM and UL approval for safe use in sprinkler systems.</p>
	<p>Fischer Angle Brackets MW and MWU for Light Channel System FLS</p> <p>Comprehensive guide to Fischer's MW and MWU angle brackets, essential construction elements for the FLS light channel system. Details applications, advantages, material properties, technical specifications, and load capacities for efficient installation in dry interior areas.</p>
	<p>European Technical Assessment ETA-20/0728: fischer FIS V Plus Rebar Connection System</p> <p>Official European Technical Assessment (ETA-20/0728) for the fischer FIS V Plus injection system, detailing its technical specifications, performance data, and installation requirements for post-installed rebar connections in concrete.</p>