



Manuals.plus /

- › Logitech /
- › Logitech X300 Mobile Wireless Stereo Speaker User Manual

Logitech X300

Logitech X300 Mobile Wireless Stereo Speaker User Manual

Model: X300 (984-000402)

1. INTRODUCTION

This manual provides essential information for the proper setup, operation, and maintenance of your Logitech X300 Mobile Wireless Stereo Speaker. Please read these instructions carefully before using the device.

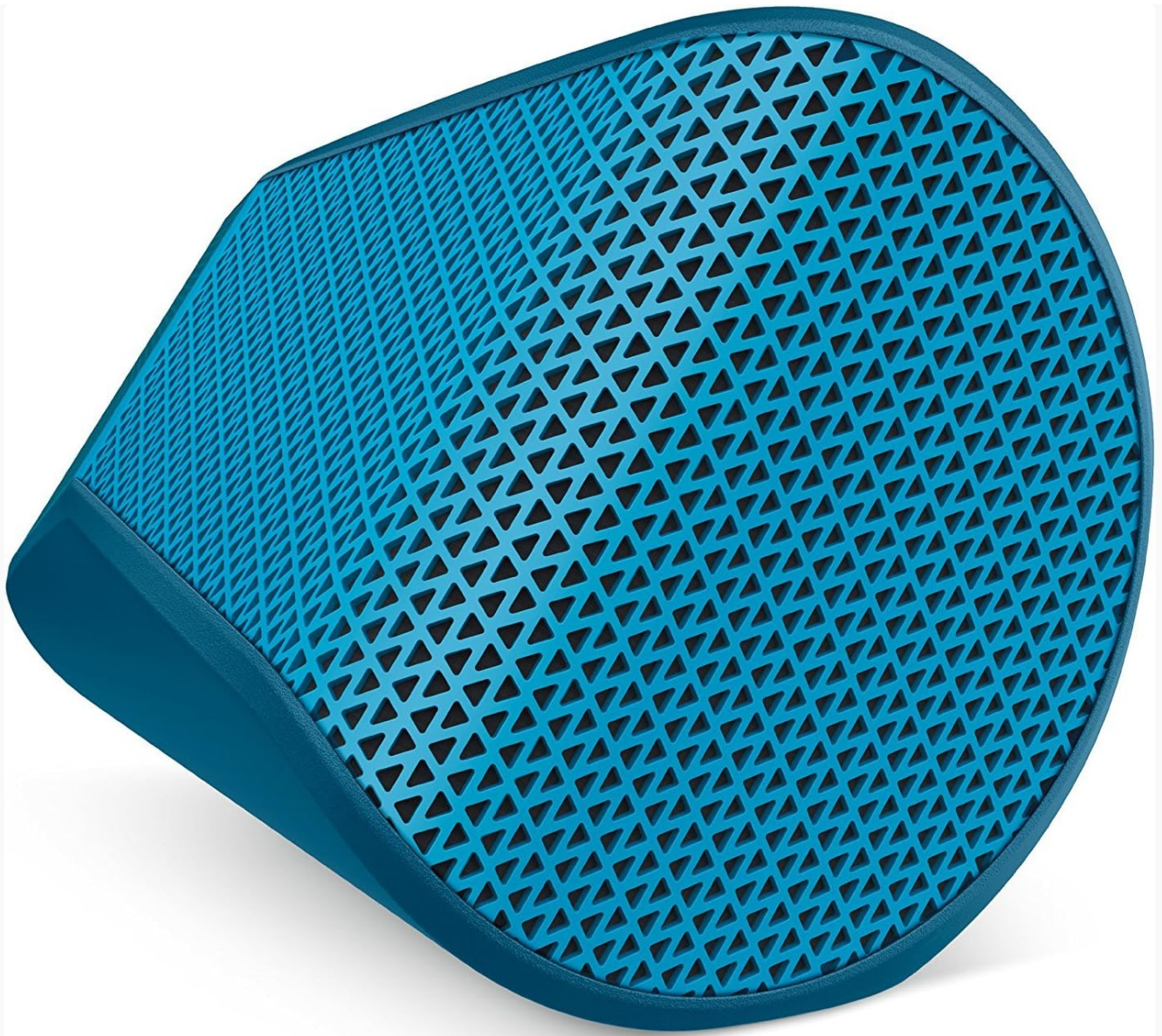


Figure 1: Logitech X300 Mobile Wireless Stereo Speaker, front angled view.

2. WHAT'S IN THE BOX

Verify that all items are present in the package:

- Logitech X300 Mobile Wireless Stereo Speaker
- USB Charging Cable
- User Documentation (this manual)

3. SETUP

3.1 Charging the Speaker

1. Connect the small end of the USB charging cable to the micro-USB port on the back of the speaker.
2. Connect the large end of the USB charging cable to a USB power adapter (not included) or a powered USB port on a computer.
3. The charging indicator light will illuminate. A full charge typically takes approximately 2-3 hours.
4. The speaker provides up to 5 hours of continuous music playback on a full charge.

3.2 Bluetooth Pairing

1. Ensure the speaker is charged and powered off.
2. Press and hold the **Power button** (usually located on the side or back) until you hear an audible tone and the Bluetooth indicator light begins to flash rapidly. This indicates the speaker is in pairing mode.
3. On your Bluetooth-enabled device (smartphone, tablet, laptop), navigate to the Bluetooth settings.
4. Select "Logitech X300" from the list of available devices.
5. Once paired, the Bluetooth indicator light on the speaker will glow solid, and you will hear a confirmation tone.
6. The speaker will automatically attempt to reconnect to the last paired device when powered on.





Figure 2: Side view of the speaker with Volume Up, Bluetooth, and Volume Down buttons.

4. OPERATING INSTRUCTIONS

4.1 Power On/Off

- To power on: Press the **Power button**. The indicator light will turn on.
- To power off: Press and hold the **Power button** until the indicator light turns off.

4.2 Volume Control

- To increase volume: Press the **Volume Up (+) button**.
- To decrease volume: Press the **Volume Down (-) button**.
- You can also control the volume directly from your connected Bluetooth device.

4.3 Answering Calls

The Logitech X300 features a built-in microphone for speakerphone functionality.

- When a call comes in, the music will pause.
- To answer a call: Press the **Bluetooth button** once.
- To end a call: Press the **Bluetooth button** once.
- To reject a call: Press and hold the **Bluetooth button** for 2 seconds.

4.4 Bluetooth Range

The speaker maintains a wireless connection up to 30 feet (10 meters) from your Bluetooth-enabled device. Obstacles such as walls or other electronic devices may reduce this range.

X300

Mobile Wireless Stereo Speaker

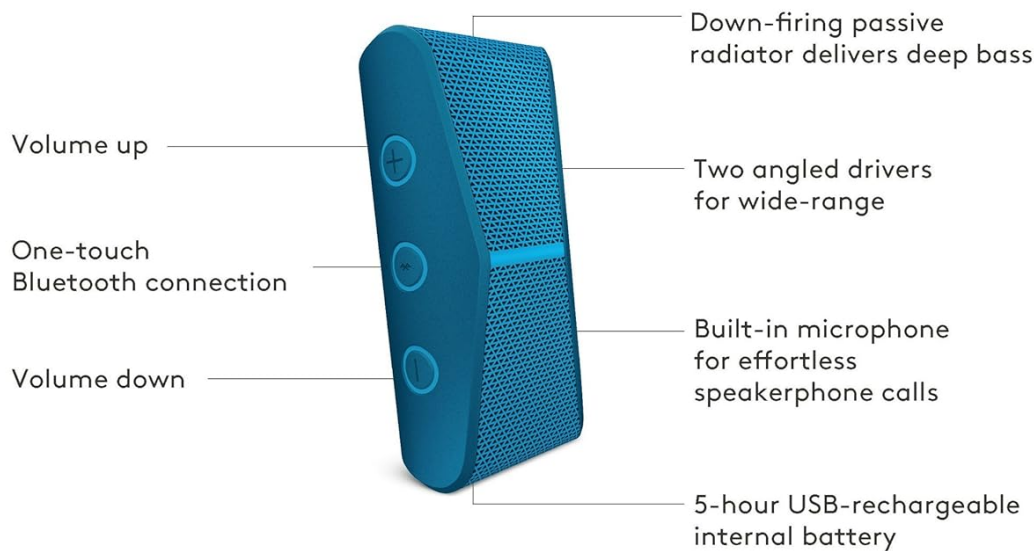


Figure 3: Labeled diagram of the Logitech X300 highlighting key features and controls.

5. MAINTENANCE

5.1 Cleaning

- Wipe the speaker with a soft, dry, lint-free cloth.
- Do not use abrasive cleaners, solvents, or aerosol sprays, as these may damage the finish or internal components.
- Avoid getting moisture into any openings.

5.2 Battery Care

- To prolong battery life, avoid fully discharging the battery frequently.
- If storing the speaker for an extended period, charge it to approximately 50% every few months.
- Do not expose the speaker to extreme temperatures (hot or cold), as this can affect battery performance and lifespan.

6. TROUBLESHOOTING

6.1 Speaker Does Not Power On

- Ensure the battery is charged. Connect the speaker to a power source using the USB cable and allow it to charge for at least 30 minutes before attempting to power it on again.
- Verify that the power button is being pressed correctly.

6.2 Cannot Pair via Bluetooth

- Ensure the speaker is in pairing mode (Bluetooth indicator light flashing rapidly). If not, power off and then press and hold the Power button until it enters pairing mode.
- Make sure Bluetooth is enabled on your device and it is discoverable.
- Move your device closer to the speaker (within 30 feet/10 meters) and ensure there are no major obstructions.

- Try turning off Bluetooth on your device and then turning it back on.
- If previously paired, try 'forgetting' or 'unpairing' the speaker from your device's Bluetooth settings and then re-pairing.
- Restart both the speaker and your Bluetooth device.

6.3 No Sound or Poor Sound Quality

- Ensure the volume on both the speaker and your connected device is turned up.
- Check that the speaker is properly paired and connected to your device.
- Move your device closer to the speaker to improve signal strength.
- Ensure there are no other devices interfering with the Bluetooth signal.
- Try playing audio from a different application or source on your device.

7. SPECIFICATIONS

Feature	Specification
Brand	Logitech
Model Name	X300
Model Number	984-000402
Connectivity Technology	Wireless (Bluetooth)
Audio Output Mode	Stereo
Speaker Type	Component
Controller Type	Battery Powered
Color	Blue
Control Method	Touch
Item Weight	12.8 ounces (approx. 363 grams)
Compatible Devices	Smartphone, Tablet, Laptop (Bluetooth-enabled)
Power Source	Battery Powered (Built-in rechargeable lithium-ion)
Battery Life	Up to 5 hours (continuous music)
Wireless Range	Up to 30 feet (10 meters)

8. WARRANTY INFORMATION

Logitech provides a limited hardware warranty for this product. For detailed warranty terms and conditions, including duration and coverage, please refer to the official Logitech website or the warranty documentation included with your purchase.

You can typically find the most current warranty information and registration details on the official Logitech support page.

9. SUPPORT

For further assistance, technical support, or to access additional resources, please visit the official Logitech support website:

Logitech Support Website

Here you can find FAQs, driver downloads, and contact information for customer service.