

Inspired LED Kitchen LED Lighting 4921

Inspired LED Pro Series 42 LED Light Panels Instruction Manual

Model: Kitchen LED Lighting 4921

1. PRODUCT OVERVIEW

The Inspired LED Pro Series 42 LED Light Panels are designed for various low-voltage lighting applications, including under-cabinet task lighting, accent lighting on shelves, or display cases. This product includes a pack of six (6) rigid, low-profile LED panels with a warm white light output. These panels are intended for indoor use and require a separate 12V power supply and interconnecting accessories for operation.



Figure 1: Six Inspired LED Pro Series 42 LED Light Panels. Each panel is a linear strip of warm white LEDs.

Key Features:

- Professional under-cabinet and kitchen LED lighting solution.
- Low cost modular design for flexible installations.
- Easy installation (requires separate accessories).

- Low energy consumption.
- Long-lasting LEDs, rated for up to 100,000 hours.
- Available in Warm White (~3000K / 3200 Kelvin).
- UV and IR free light output.
- Small, discreet, low-profile design.
- Dimmable with compatible dimmers.

2. PACKAGE CONTENTS

- Six (6) Inspired LED Pro Series 42 LED Light Panels (Warm White)
- Mounting screws

Note: This panel pack does not include power supplies, interconnect cables, switches, or dimmers. All necessary accessories must be purchased separately to complete your lighting system.

3. SPECIFICATIONS

Model	Inspired LED Pro Series 42 LED Panel
Light Type	LED
Light Color	Warm White
Color Temperature	~3000K (3200 Kelvin)
Brightness (per pack)	Up to 1800 Lumens
Efficiency	100 lumens per watt
Dimensions (per panel)	16.75 inches (L) x 0.75 inches (W) x 0.375 inches (H)
Power Requirement	12 VDC (requires external 12V power supply, 110 VAC input)
Material	Copper
Indoor/Outdoor Usage	Indoor
Installation Method	Flush Mount

4. INSTALLATION INSTRUCTIONS

These LED panels are designed for easy installation. Ensure you have all necessary accessories (12V power supply, interconnect cables, switch/dimmer) before beginning. Refer to the diagram below for visual guidance.

inspired LED

Pro Series LED Panels



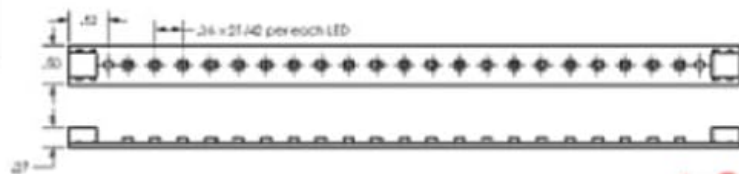
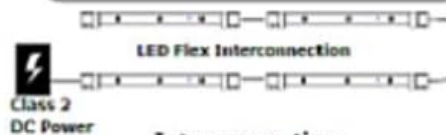
The Pro Series LED Panels are an ideal low-voltage LED lighting solution for any application, from under cabinet task lights in the kitchen, to accent lighting on shelves or display cases. These rigid, low-profile panels are easily combined with Inspired LED accessories to create the perfect system for any home or business!

Product Features:

- Low cost modular design
- Easy Installation
- Low energy consumption
- Rated to last 100,000 hrs
- Available in warm white (3000K), pure white (4200K), or cool white (6000 K)
- UV and IR free

Specifications:

- Pro Series 21 LED Panels- 8 3/4" (L) x 1/2" (W) x 1/4" (H)
- Pro Series 42 LED Panels- 16 1/2" (L) x 1/2" (W) x 1/4" (H)
- To be used with 12 V power supply- 110 VAC in/12 VDC out



Interconnection



Instructions:

1. To **install**, secure Pro Series LED panel onto a flat surface using adhesive backing or screw mount holes on each end
2. Make **interconnections** using our convenient 22AWG interconnect cables
3. Connect cable from initial panel to in line switch or dimmer
4. Connect to 12VAC power source

inspired LED

Inspired LED 1733 E. McKellips Rd. Suite #112 Tempe, AZ 85281 • (480) 941-4286 • www.inspiredled.com

Figure 2: Product diagram illustrating panel dimensions, interconnection points, and installation steps. Note that accessories like power supplies and cables are not included with the panel packs.

Installation Steps:

1. **Secure Panels:** Install and secure each Pro Series LED panel onto a flat surface. This can be done using adhesive backing (not included) or by utilizing the screw mount holes located on each end of the panel with the provided screws.
2. **Interconnect Panels:** Use 22AWG interconnect cables (sold separately) to connect multiple panels. Ensure connections are secure.

3. **Connect to Control:** Connect the cable from the initial panel in your series to an in-line switch or dimmer (sold separately).
4. **Connect to Power:** Connect the switch/dimmer to a compatible 12VDC power source (sold separately). The power supply typically converts 110 VAC household current to 12 VDC.

Important: Ensure all connections are correct and secure before applying power. Consult a qualified electrician if you are unsure about any wiring procedures.

5. OPERATING INSTRUCTIONS

Once properly installed and connected to a power source and control switch/dimmer, operate the LED panels as follows:

- **Power On/Off:** Use the connected in-line switch to turn the LED panels on or off.
- **Dimming:** If a compatible dimmer is installed, adjust the dimmer control to achieve the desired brightness level.

6. MAINTENANCE

Inspired LED Pro Series panels are designed for long-term, maintenance-free operation. Follow these guidelines to ensure optimal performance:

- **Cleaning:** To clean the panels, ensure power is off. Gently wipe the surface with a soft, dry cloth. Avoid using abrasive cleaners, solvents, or excessive moisture, as these can damage the LEDs or housing.
- **Inspection:** Periodically check connections for any signs of wear or looseness.
- **Environment:** Ensure the panels are used in a dry, indoor environment within their specified operating temperature range.

7. TROUBLESHOOTING

If your LED panels are not functioning as expected, consider the following troubleshooting steps:

- **No Light:**
 - Verify that the power supply is properly connected and receiving power from the wall outlet.
 - Check all interconnect cables between panels and to the switch/dimmer for secure connections.
 - Ensure the switch is in the 'ON' position.
 - Confirm the power supply is functioning correctly and providing 12VDC output.
- **Flickering Lights:**
 - Check for loose connections in the wiring.
 - Ensure the power supply is adequate for the total number of panels connected. An undersized power supply can cause flickering.
 - If using a dimmer, ensure it is compatible with LED lighting and properly installed.
- **Uneven Brightness:**
 - This can sometimes occur with very long runs of LED panels if the power supply is at one end. Ensure the power supply is appropriately sized.
 - Check for any damaged panels or connections.

If issues persist after performing these checks, contact Inspired LED customer support for further assistance.

8. WARRANTY AND SUPPORT

For information regarding product warranty, technical support, or to purchase additional accessories, please visit the official Inspired LED website or contact their customer service department. You can find more products and information at the [Inspired LED Store on Amazon](#).

9. PRODUCT USAGE EXAMPLES

The following images demonstrate typical applications and the effect of Inspired LED Pro Series panels in various settings.



Figure 3: A kitchen scene demonstrating the visual impact of under-cabinet LED lighting. The 'Before' image shows a kitchen with standard overhead lighting, while the 'After' image highlights the enhanced illumination and ambiance provided by the installed LED panels.



Figure 4: An example of warm white LED lighting installed under kitchen cabinets, providing task illumination for the countertop area.

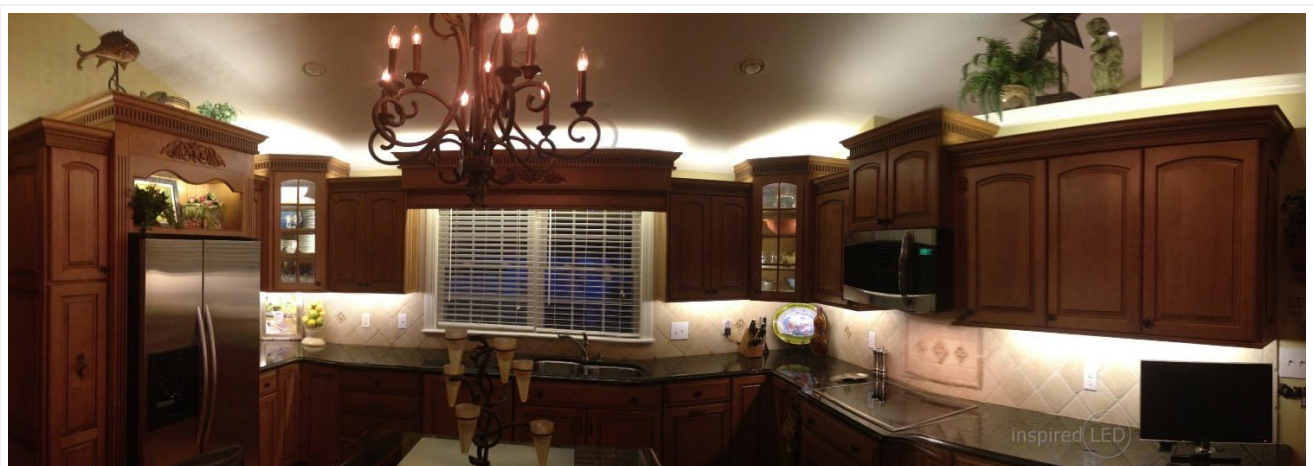


Figure 5: A spacious kitchen featuring comprehensive under-cabinet and accent lighting using Inspired LED panels, enhancing both functionality and aesthetic appeal.