

## Geberit 154.336.FW.1

# Geberit Wall Mounted Siphon Cover

MODEL: 154.336.FW.1

## Introduction

This instruction manual provides essential information for the proper installation, operation, and maintenance of your Geberit 154.336.FW.1 Wall Mounted Siphon Cover. Please read this manual thoroughly before beginning installation or use to ensure safe and efficient operation. Retain this manual for future reference.

## Safety Information

Observe the following safety guidelines to prevent injury and damage to the product:

- Always wear appropriate personal protective equipment (PPE) during installation, such as gloves and eye protection.
- Ensure all water supply lines are shut off before commencing installation.
- If you are unsure about any part of the installation process, consult a qualified professional.
- Do not modify the product in any way, as this may void the warranty and compromise safety.
- Keep small parts out of reach of children to prevent choking hazards.

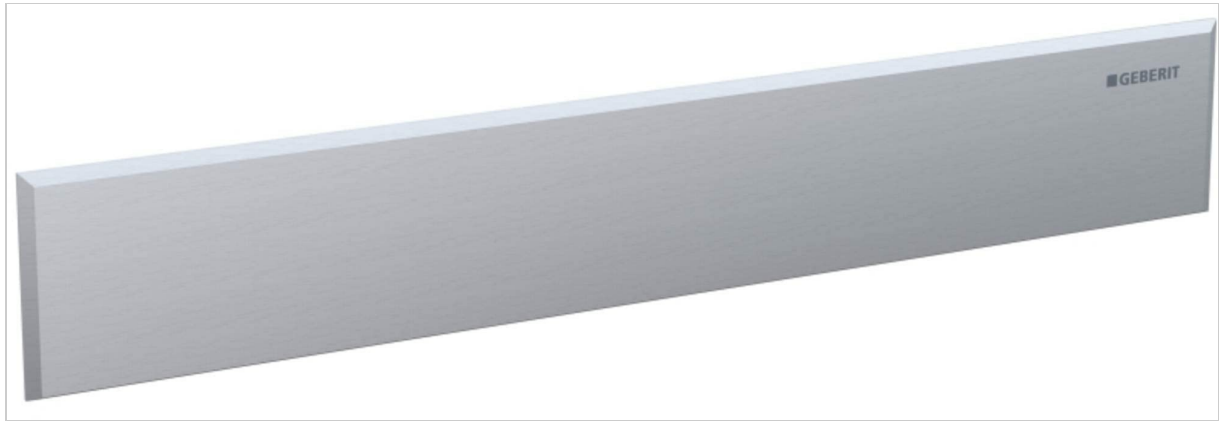
## Package Contents

Verify that all components are present before starting installation:

- Geberit 154.336.FW.1 Wall Mounted Siphon Cover (Brushed Stainless Steel)
- Mounting hardware (if applicable, refer to included components list)
- Instruction Manual

## Setup and Installation

The Geberit 154.336.FW.1 siphon cover is designed for integration with a Geberit shower wall gutter system. Proper installation ensures optimal function and aesthetic appeal.



This diagram illustrates the key dimensions of the Geberit wall mounted siphon cover. The cover measures 32 units in length and 5 units in width, providing essential measurements for installation planning.

### Installation Steps:

1. **Prepare the Shower Wall Gutter:** Ensure the Geberit shower wall gutter system is correctly installed and sealed according to its specific instructions.
2. **Position the Siphon Cover:** Carefully align the stainless steel siphon cover with the opening of the shower wall gutter. The 'Right-sided' design indicates its intended orientation.
3. **Secure the Cover:** If specific mounting hardware is provided, use it to secure the cover firmly in place. The cover is designed to sit flush with the surrounding surface.
4. **Check for Proper Fit:** Ensure the cover is stable and does not wobble. It should provide a seamless finish to the shower area.
5. **Test Drainage:** After installation, test the shower drainage to confirm proper water flow and ensure no obstructions are present.

### Operation

The Geberit 154.336.FW.1 Wall Mounted Siphon Cover functions as a decorative and protective element for your shower wall gutter. Once installed, it requires no active operation. Its primary purpose is to cover the siphon mechanism, providing a finished aesthetic while allowing water to drain efficiently into the gutter system.

### Maintenance and Care

To maintain the appearance and functionality of your stainless steel siphon cover, follow these care instructions:

- **Regular Cleaning:** Clean the stainless steel surface regularly with a soft cloth and a mild, non-abrasive cleaner.
- **Avoid Harsh Chemicals:** Do not use abrasive cleaners, scouring pads, or strong chemical agents, as these can scratch or damage the stainless steel finish.
- **Rinse Thoroughly:** After cleaning, rinse the cover thoroughly with clean water and dry it with a soft cloth to prevent water spots.
- **Inspect for Debris:** Periodically remove the cover (if designed for easy removal) to inspect and clean any debris from the underlying shower gutter and siphon.

## Troubleshooting

If you encounter issues with your siphon cover, refer to the following table:

Problem	Possible Cause	Solution
Cover does not sit flush.	Incorrect installation or obstruction.	Re-check alignment and ensure no debris is preventing a flush fit. Verify the underlying gutter is correctly installed.
Water drains slowly.	Obstruction in the shower gutter or siphon.	Remove the cover and clean the shower gutter and siphon thoroughly.
Cover appears scratched or dull.	Abrasive cleaning agents or materials used.	Use only soft cloths and mild, non-abrasive cleaners for stainless steel.

## Specifications

Feature	Detail
Model Number	154.336.FW.1
Material	Stainless Steel
Color	Stainlesssteel (Brushed)
Style	Right-sided
Product Dimensions	11.81 x 7.87 x 15.75 inches (Packaging)
Item Weight	14.8 ounces
Manufacturer	GEBERIT

## Warranty Information

Geberit products are manufactured to high-quality standards. For specific warranty terms and conditions applicable to your region and product, please refer to the official Geberit website or contact customer support. Keep your proof of purchase for warranty claims.

## Customer Support

If you have any questions, require technical assistance, or need to report an issue with your Geberit product, please visit the official Geberit website for contact information or consult your local distributor. When contacting support, please have your product model number (154.336.FW.1) and purchase details readily available.

