

TickiT 75544

TickiT 75544 Sensory Mood Light Cube User Manual

Model: 75544 | Brand: TickiT

INTRODUCTION

The TickiT 75544 Sensory Mood Light Cube is a durable, hollow plastic light cube designed to provide ambient and sensory lighting. It can be used indoors or outdoors. This manual provides essential information for the safe and effective use of your Sensory Mood Light Cube.



Image: The TickiT 75544 Sensory Mood Light Cube, shown in its unlit white state.

SAFETY INFORMATION

- **Adult Supervision:** Always ensure adult supervision when children are using the light cube, especially near water.
- **Power Supply:** Use only the provided low-voltage AC power supply and charging unit. Do not use unauthorized chargers.
- **Water Resistance:** The unit is IP65 water-resistant, making it suitable for outdoor use and activities involving water. However, do not submerge the charging unit or power supply in water.
- **Load Capacity:** The cube is tested to withstand a load of up to 80 kg. Do not exceed this weight limit.
- **Cleaning:** Disconnect from power before cleaning. Use a damp cloth; do not use abrasive cleaners.
- **Damage:** If the unit or power supply appears damaged, discontinue use immediately and contact customer support.

PACKAGE CONTENTS

Verify that all items are present in the package:

- 1 x TickiT 75544 Sensory Mood Light Cube
- 1 x Low-voltage AC Power Supply
- 1 x Charging Unit
- 1 x Remote Control

SETUP

Initial Charging

1. Unpack the light cube, power supply, and charging unit.
2. Connect the low-voltage AC power supply to the charging unit.
3. Plug the power supply into a standard electrical outlet.
4. Place the light cube onto the charging unit. Ensure proper contact for charging.
5. Allow approximately 6 hours for a full charge. The indicator light on the charging unit (if present) may change color to indicate charging status.

A full charge provides up to 10 hours of continuous illumination, depending on the selected light program.

OPERATING INSTRUCTIONS

Using the Remote Control

The light cube is operated using the included remote control. Ensure the remote has working batteries (not included, if applicable, check remote for battery type).

- **Power On/Off:** Press the **ON/OFF** button to turn the light cube on or off.
- **Color Selection:** Use the color buttons on the remote to select one of 16 different static colors.
- **Fade Mode:** Press the **FADE** button to activate a smooth transition through the entire spectrum of colors.
- **Brightness Adjustment:** Use the brightness buttons (usually sun icons or up/down arrows) to adjust the intensity of the light.

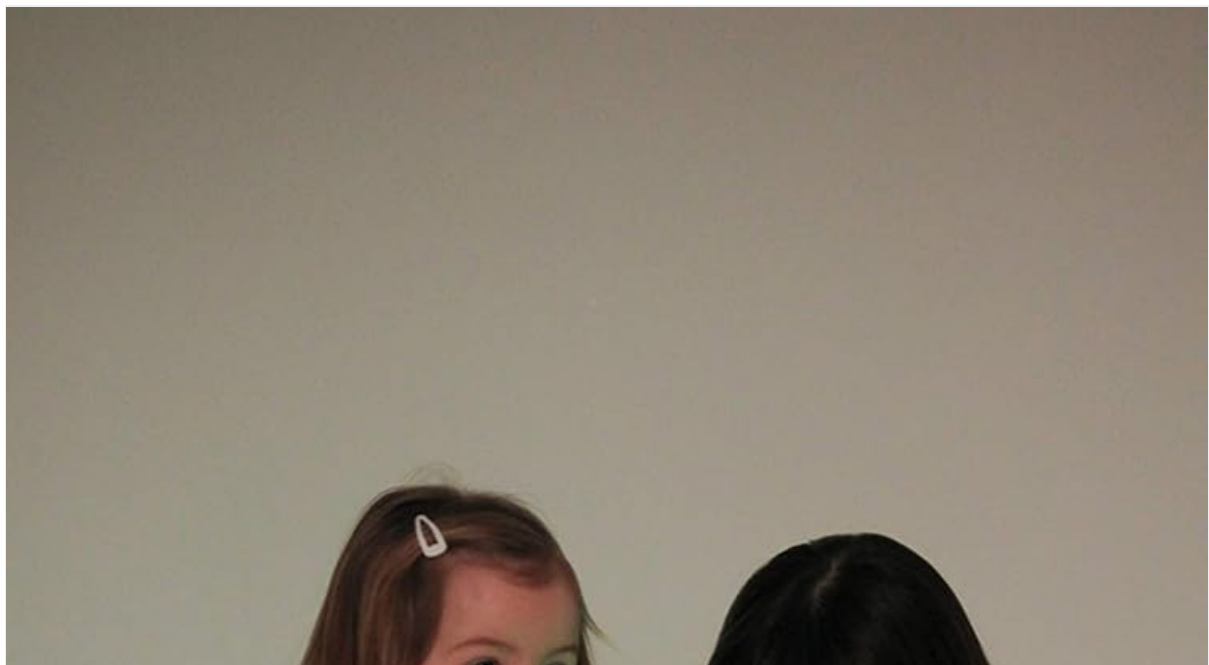




Image: Two children observing the TickiT Sensory Mood Light Cube illuminated in green.



Image: Children using the TickiT Sensory Mood Light Cube as a surface for play, illuminated in blue.

MAINTENANCE

Cleaning

To clean the light cube:

1. Ensure the unit is turned off and disconnected from the charging unit and power supply.
2. Wipe the surface with a soft, damp cloth.
3. Do not use harsh chemicals, abrasive cleaners, or solvents, as these may damage the plastic surface.
4. Allow the cube to dry completely before placing it back on the charging unit or using it.

Storage

When not in use for extended periods, store the light cube in a cool, dry place away from direct sunlight. Ensure it is fully charged before storage to prolong battery life.

TROUBLESHOOTING

Problem	Possible Cause	Solution
Light cube does not turn on.	Battery is depleted. Remote control batteries are dead. Unit is not properly charged.	Charge the light cube for 6 hours. Replace remote control batteries. Ensure the cube is correctly placed on the charging unit.

Problem	Possible Cause	Solution
Light cube does not charge.	Charging unit or power supply is not connected. Faulty power outlet. Cube not making proper contact with charger.	Check all connections. Try a different power outlet. Adjust the cube's position on the charging unit.
Remote control is not working.	Batteries are depleted or incorrectly inserted. Obstruction between remote and cube.	Replace remote control batteries, ensuring correct polarity. Remove any obstructions. Ensure you are within range.
Light is dim or inconsistent.	Low battery. Brightness setting is too low.	Recharge the light cube. Increase brightness using the remote control.

SPECIFICATIONS

Feature	Detail
Model Number	75544
Material	Plastic
Color	White (unlit)
Dimensions (Package)	44 x 42 x 40 cm
Weight (Package)	4.7 kilograms
Switch Style	Remote Control
Battery Type	Internal Rechargeable (Batteries not included for remote, if applicable)
Charge Cycle	Approx. 6 hours for full charge
Operating Time	Up to 10 hours (on full charge)
Water Resistance Rating	IP65
Load Capacity	Up to 80 kg
Manufacturer	Commotion Ltd
Country of Origin	United Kingdom

WARRANTY AND SUPPORT

For warranty information or technical support, please refer to the retailer where the product was purchased or visit the official TickiT website. Keep your proof of purchase for any warranty claims.