

TrickleStar TS1104

TrickleStar TS1104 Advanced PowerStrip User Manual

Model: TS1104 | Brand: TrickleStar

1. INTRODUCTION AND OVERVIEW

The TrickleStar TS1104 Advanced PowerStrip is an energy-saving surge protector designed to reduce standby power waste and protect your electronic devices. It features intelligent current-sensing circuitry that automatically manages power to peripheral devices based on the status of a control device, such as a TV or computer. This power strip helps save energy and money by eliminating phantom load, which is the power consumed by electronics when they are turned off but still plugged in. By automatically cutting power to idle peripherals, the TS1104 ensures efficient energy use in both home entertainment and office environments.

2. KEY FEATURES

- 7 Outlets:** Includes two "Always On" outlets, one "Control" outlet, and four "Switched" outlets.
- Advanced Surge Protection:** 1080 Joules of surge protection with Ceramic-encased, Metal Oxide Varistors (MOV) for enhanced safety and fire resistance. Listed to UL 1449 and UL 1363 standards.
- Energy Saving:** Automatically eliminates standby power consumed by PC and TV peripherals when the control device is off or in standby.
- Selectable Switching Threshold:** Adjustable sensitivity settings (10W/22W/42W) to optimize power management for various control devices.
- LED Status Indication:** Visual indicators for Ground, Surge Status, and Switched Outlets provide immediate operational feedback.
- Noise Filtering:** Features 40dB noise filtering to ensure clean power delivery to connected devices.
- Integrated Circuit Breaker:** Provides overload protection.
- Child Protection Covers:** Safety covers on outlets.
- Angled Space Saver Plug:** Designed for convenience.
- Long Power Cord:** Equipped with a 12 ft power cord for flexible placement.

3. SETUP INSTRUCTIONS

Follow these steps to set up your TrickleStar TS1104 Advanced PowerStrip:

- Placement:** Position the power strip near your electronic devices, ensuring the 12 ft power cord can reach a grounded wall outlet.

2. **Plug in Control Device:** Connect your primary device (e.g., TV, computer, AV receiver) into the designated "Control" outlet. This device will dictate the power status of the "Switched" outlets.
3. **Plug in Switched Devices:** Connect peripheral devices (e.g., DVD player, game console, printer, scanner, speakers) into the "Switched" outlets. These outlets will receive power only when the control device is active.
4. **Plug in Always On Devices:** For devices that require continuous power (e.g., cable box, modem, router, DVR), use the "Always On" outlets. These outlets provide constant power regardless of the control device's status.
5. **Adjust Switching Threshold:** On the side of the power strip, locate the selectable switching threshold switch. Adjust this setting (Low, Medium, High) based on the standby power consumption of your control device.
 - **Low:** For control devices with very low standby power consumption.
 - **Medium:** For control devices with moderate standby power consumption.
 - **High:** For control devices with higher standby power consumption (often recommended for TVs).

Note: If switched devices turn off unexpectedly or do not turn on reliably, adjust the threshold setting. Experimentation may be required to find the optimal setting for your specific control device.

6. **Plug into Wall Outlet:** Finally, plug the TrickleStar power strip's cord into a properly grounded 120VAC wall outlet.



Figure 3.1: Top view of the TrickleStar TS1104 showing outlet types.

This image displays the top surface of the TrickleStar TS1104 Advanced PowerStrip. It clearly labels the two black "always on" outlets, the single black "control" outlet, and the four green "switched" outlets. LED indicators for surge, ground, and switched status are visible at the top left.





Figure 3.2: Side view with threshold switch.

This image shows a side profile of the TrickleStar TS1104 Advanced PowerStrip. A small, recessed switch is visible on the side, which is used to adjust the power threshold for the control device, allowing customization for different power consumption levels.

4. OPERATING INSTRUCTIONS

Once set up, the TrickleStar TS1104 operates automatically:

- **Powering On:** When you turn on the device plugged into the "Control" outlet, the power strip senses the increase in power consumption. After a brief delay (typically a few seconds), power will be supplied to the "Switched" outlets, activating all connected peripheral devices.
- **Powering Off/Standby:** When you turn off or put the control device into standby mode, its power consumption drops below the set threshold. The power strip will then automatically cut power to the "Switched" outlets, effectively turning off all connected peripherals and eliminating standby power draw.
- **LED Indicators:**
 - **Surge LED:** Illuminates when surge protection is active. If this light is off, the surge protection has been compromised, and the unit should be replaced.
 - **Ground LED:** Illuminates when the power strip is properly grounded. If this light is off, there may be a grounding issue with your wall outlet.
 - **Switched Outlets LED:** Illuminates when power is supplied to the "Switched" outlets.

5. MAINTENANCE

The TrickleStar TS1104 is designed for minimal maintenance. However, consider the following:

- **Cleaning:** Disconnect the power strip from the wall outlet before cleaning. Use a soft, dry cloth to wipe the exterior. Do not use liquid cleaners or immerse the unit in water.
- **Surge Protection Status:** Regularly check the "Surge" LED indicator. If this light is off, it means the surge protection components (MOVs) have absorbed a significant surge and are no longer providing protection. In this event, the power strip should be replaced to ensure continued protection for your devices.
- **Circuit Breaker:** The power strip includes a resettable circuit breaker. If the power strip experiences an overload, the breaker may trip, cutting power to all outlets. To reset, unplug some devices, then press the circuit breaker button (usually located on the side or end of the unit) back in.

6. TROUBLESHOOTING

If you encounter issues with your TrickleStar TS1104, refer to the following common problems and solutions:

Problem	Possible Cause	Solution
Switched outlets do not turn on when control device is active.	Control device not drawing enough power. Incorrect threshold setting. Control device not fully "on".	Ensure the control device is fully powered on. Adjust the threshold switch to a lower setting (e.g., from High to Medium or Low). Verify the control device is plugged into the correct "Control" outlet.
Switched outlets turn off unexpectedly or too quickly.	Control device power draw fluctuates below threshold. Threshold setting is too sensitive.	Adjust the threshold switch to a higher setting (e.g., from Low to Medium or High). Ensure the control device is not entering a low-power state prematurely.

Problem	Possible Cause	Solution
No power to any outlets.	Circuit breaker tripped. Power strip unplugged. Wall outlet issue.	Check and reset the circuit breaker on the power strip. Ensure the power strip is securely plugged into a working wall outlet. Test the wall outlet with another device.
Surge LED is off.	Surge protection has been compromised.	The unit no longer provides surge protection. Replace the power strip immediately to protect your electronics.
Ground LED is off.	Improper grounding at the wall outlet.	Consult a qualified electrician to inspect your wall outlet and home wiring.

7. SPECIFICATIONS

- **Model:** TS1104 (Part Number: 181SS-US-7XX)
- **Outlets:** 7 (2 Always On, 1 Control, 4 Switched)
- **Surge Protection:** 1080 Joules
- **Voltage:** 125 Volts
- **Amperage Capacity:** 15 Amps
- **Switching Thresholds:** 10W / 22W / 42W (Selectable)
- **Noise Filtering:** 40dB
- **Cord Length:** 12 ft
- **Dimensions:** Approximately 38.1 x 6.99 x 3.81 cm (15 x 2.75 x 1.5 inches)
- **Weight:** Approximately 544 g (1.2 lbs)
- **Material:** Metal Oxide (for MOVs)
- **Color:** White
- **Manufacturer:** Trickle Star

8. WARRANTY AND SUPPORT

The TrickleStar TS1104 Advanced PowerStrip comes with a "Product Lifetime" warranty, which is defined as a 10-year warranty from the date of purchase. This warranty covers defects in materials and workmanship under normal use.

For warranty claims, technical support, or further assistance not covered in this manual, please contact TrickleStar customer service. Refer to the product packaging or the official TrickleStar website for the most current contact information.

Important: Do not attempt to open or repair the power strip yourself, as this will void the warranty and could pose a safety risk.

TrickleStar

12 Ways Our TS1104 is Your Safest Choice

No other advanced power strip manufacturer can claim all these safety measures and features.

- Ceramic-encased MOVs** - Advanced surge protection technology that eliminates the risks from MOV failures.
- Tested and certified by UL to UL1363 and UL1449** - 100% fire and shock safety.
- Our high quality dedicated circuit breaker** - A built-in resettable circuit breaker.
- Multiple thermal safety zones** - Advanced thermal safety zones that eliminate the risks from MOV failures.
- No fire risk** - The TS1104 has been tested and certified by UL to UL1363 and UL1449.
- Multiple safety testing zones** - Advanced safety testing zones that eliminate the risks from MOV failures.
- Internal power zones are 100% safe** - Advanced internal power zones that eliminate the risks from MOV failures.
- Overcurrent protection** - Advanced overcurrent protection that eliminates the risks from MOV failures.
- Protection from testing, product use, and disposal** - Advanced protection from testing, product use, and disposal.
- Overcurrent protection** - Advanced overcurrent protection that eliminates the risks from MOV failures.
- The product has a 10 Year UL1363 and UL1449** - Advanced product safety.
- 10 Year UL1363 and UL1449** - Advanced product safety.

© 2019 TrickleStar Inc. All rights reserved.

[pdf]

12 Ways our TS1104 is your safest choice TrickleStar Inc Safety One Pager tricklestar Resources

12 Ways Our **TS1104** is Your Safest Choice No other advanced power strip manufacturer can claim all these safety measures and features. X Ceramic-encased MOVs suppress more energy and dissipate heat faster, eliminating fire risks from MOV failures. Tested and certified by UL to UL1363 and 1449 3rd ...

lang:en score:40 filesize: 236.08 K page_count: 1 document date: 2019-12-04

TrickleStar

TS1104 TIER 1 ADVANCED POWERSTRIP

Reduces standby power wasted by TV and computer setups while providing premium fireproof surge protection

OVERVIEW

Standby power, also commonly referred to as vampire power or phantom load, is the energy electronics continue to draw when they are plugged in but turned off. The TrickleStar Advanced PowerStrip (APTS) provides premium fireproof surge protection and helps eliminate standby power wasted by TV and computer setups.

The APTS works on a simple control-switched basis. When the control switch, typically a TV or computer, is in the standby state, the APTS provides premium fireproof surge protection and helps eliminate standby power wasted by TV and computer setups. When the control switch is turned off, the APTS provides premium fireproof surge protection and helps eliminate standby power wasted by TV and computer setups.

KEY FEATURES

- 1 control
- 2 power-on (1 transformer bypass)
- 4 outlets (1 transformer bypass)
- 15 amp, 120 volt, 1500 joules of premium fireproof surge protection at 300 V/1000 A
- Adjustable threshold switch
- Control switch at all times
- LED indicator (green, red, yellow)
- 10 Year UL1363 and UL1449
- Space-saving design
- 100% safety zones
- Designed in an ultracompact

PREMIUM FIREPROOF SURGE PROTECTION

Traditional surge suppression products use standard Metal Oxide Varistors (MOVs). All TrickleStar APTSs use ceramic-encased MOVs, which suppress more energy and dissipate heat faster than standard MOVs. This means they provide the highest degree of protection available.

EM/RFI NOISE FILTERING

The TS1104 features advanced noise filtering circuitry that reduces electromagnetic interference (EMI) and radio frequency interference (RFI), delivering cleaner power, and improved video and sound quality.

PRODUCT WARRANTIES

- 10 Year UL1363 and UL1449
- 100,000 Connected Equipment Warranty

Optimizing Energy™

[pdf] Datasheet

TS1104 Advanced PowerStrip Datasheet OVERVIEW Standby power also commonly referred to as vampire or phantom load is the energy electronics continue draw when they are plugged in but turned off The TrickleStar DS tricklestar Resources

TS1104 TIER 1 ADVANCED POWERSTRIP Reduces standby power wasted by TV and computer setups while providing premium fireproof surge protection OVERVIEW Standby power, also commonly referred to as vampire power or phantom load, is the energy electronics continue to draw when they are plugged in, but tu...

lang:en score:38 filesize: 697.27 K page_count: 2 document date: 2020-08-17

TrickleStar

TS1104 TIER 1 ADVANCED POWERSTRIP

Reduces standby power wasted by TV and computer setups while providing premium fireproof surge protection

OVERVIEW

Standby power, also commonly referred to as vampire power or phantom load, is the energy electronics continue to draw when they are plugged in but turned off. The TrickleStar Advanced PowerStrip (APTS) provides premium fireproof surge protection and helps eliminate standby power wasted by TV and computer setups.

The APTS works on a simple control-switched basis. When the control switch, typically a TV or computer, is in the standby state, the APTS provides premium fireproof surge protection and helps eliminate standby power wasted by TV and computer setups. When the control switch is turned off, the APTS provides premium fireproof surge protection and helps eliminate standby power wasted by TV and computer setups.

KEY FEATURES

- 1 control
- 2 power-on (1 transformer bypass)
- 4 outlets (1 transformer bypass)
- 15 amp, 120 volt, 1500 joules of premium fireproof surge protection at 300 V/1000 A
- Adjustable threshold switch
- Control switch at all times
- LED indicator (green, red, yellow)
- 10 Year UL1363 and UL1449
- Space-saving design
- 100% safety zones
- Designed in an ultracompact

PREMIUM FIREPROOF SURGE PROTECTION

Traditional surge suppression products use standard Metal Oxide Varistors (MOVs). All TrickleStar APTSs use ceramic-encased MOVs, which suppress more energy and dissipate heat faster than standard MOVs. This means they provide the highest degree of protection available.

EM/RFI NOISE FILTERING

The TS1104 features advanced noise filtering circuitry that reduces electromagnetic interference (EMI) and radio frequency interference (RFI), delivering cleaner power, and improved video and sound quality.

PRODUCT WARRANTIES

- 10 Year UL1363 and UL1449
- 100,000 Connected Equipment Warranty

The best way to save energy is to stop wasting it.™

www.tricklestar.com

[pdf] Specifications Datasheet Catalog

TS1104 Tier 1 Advanced PowerStrip Datasheet TrickleStar LightBulbs are plugged in but turned off The APS provides premium fireproof surge protection and helps eliminate standby power Tricklestar 00627 Specs lightbulbs catalog product s general

TS1104 TIER 1 ADVANCED POWERSTRIP Reduces standby power wasted by TV and computer setups while providing premium fireproof surge protection OVERVIEW Standby power, also commonly referred to as vampire power or phantom load, is the energy electronics continue to draw when they are plugged in, but tu...

lang:en score:37 filesize: 669.65 K page_count: 2 document date: 2019-11-22

[pdf] Instructions

TS1104 Advanced PowerStrip Instructions Resettable Circuit Breaker Adjustable Threshold Switch Space Saving Angled Plug HOW IT WORKS The TrickleStar 7 Outlet works on a simple control switched basis When the TV INS Eng tricklestar Resources

Resettable Circuit Breaker Adjustable Threshold Switch Space-Saving Angled Plug HOW IT WORKS The TrickleStar 7-Outlet Advanced PowerStrip works on a simple control/switched basis. When the TV or PC is plugged into the control outlet and turned on, the switched outlets will turn on and items plugged ...

lang:en score:35 filesize: 828.43 K page_count: 2 document date: 2020-12-10

TrickleStar

TS1104 TIER 1 ADVANCED POWERSTRIP

Reduces standby power wasted by TV and computer setups while providing premium fireproof surge protection

OVERVIEW

Standby power, also commonly referred to as vampire power or phantom load, is the energy electronics continue to draw when they are plugged in but turned off. The TrickleStar Advanced PowerStrip (APTS) provides premium fireproof surge protection and helps eliminate standby power wasted by TV and computer setups.

The APTS works on a simple control-switched basis. When the control switch, typically a TV or computer, is in the standby state, the APTS provides premium fireproof surge protection and helps eliminate standby power wasted by TV and computer setups. When the control switch is turned off, the APTS provides premium fireproof surge protection and helps eliminate standby power wasted by TV and computer setups.

KEY FEATURES

- 1 control
- 2 power-on (1 transformer bypass)
- 4 outlets (1 transformer bypass)
- 15 amp, 120 volt, 1500 joules of premium fireproof surge protection at 300 V/1000 A
- Adjustable threshold switch
- Control switch at all times
- LED indicator (green, red, yellow)
- 10 Year UL1363 and UL1449
- Space-saving design
- 100% safety zones
- Designed in an ultracompact

PREMIUM FIREPROOF SURGE PROTECTION

Traditional surge suppression products use standard Metal Oxide Varistors (MOVs). All TrickleStar APTSs use ceramic-encased MOVs, which suppress more energy and dissipate heat faster than standard MOVs. This means they provide the highest degree of protection available.

EM/RFI NOISE FILTERING

The TS1104 features advanced noise filtering circuitry that reduces electromagnetic interference (EMI) and radio frequency interference (RFI), delivering cleaner power, and improved video and sound quality.

PRODUCT WARRANTIES

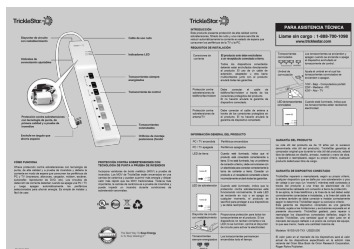
- 10 Year UL1363 and UL1449
- 100,000 Connected Equipment Warranty



[\[pdf\]](#) Installation Guide Specifications Catalog

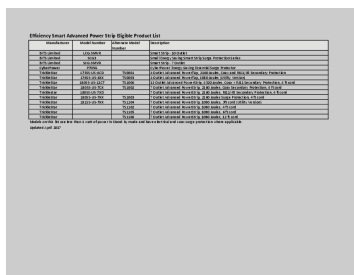
DS TS1104 3 ft 7 Outlet Advanced and Energy Saving Surge Protector Specification TRICKLESTAR 857251008206 0857251008206 1008140323 26336b82 d44e 4440 98e7 43c7f8fc2cf images thdstatic catalog Images 26 |||

MODEL TS1104 ADVANCED POWERSTRIP Provides premium-quality surge protection that reduces standby energy wasted by PC and TV peripheral electronics
OVERVIEW Standby power, also commonly referred to as vampire power or phantom load, is energy consumed by electronics while they are switched off or in standby mode. The TrickleStar Advanced PowerStrip (APS) provides premium-quality, resettable surge protection and reduces standby energy waste from PC and TV peripheral electronics. The APS features unique energy sensing technology that monitors the power draw of each device plugged into it, and if it is a standby device, the APS automatically shuts off power to that device. Through simple automation, the Advanced PowerStrip reduces standby energy waste by up to 90% and reduces energy consumption of all peripheral electronics plugged into the APS. The APS is a simple, easy-to-use device that provides premium-quality surge protection for both residential and commercial applications.



[\[pdf\]](#)

INS TS1104 R4 Spanish 30 Oct 2017 tricklestar Resources
 Disyuntor de circuito con restablecimiento Umbrales de conmutacin ajustables Cable de uso rudo Indicadores LED Tomacorrientes siempre energizados Tomacorriente de control Proteccin contra sobretensiones con tecnologa de punta, de primera calidad y a prueba de incendios Enchufe en ngulo que ahorra ...
 lang:es **score:28** filesize: 1.32 M page_count: 2 document date: 2017-10-30



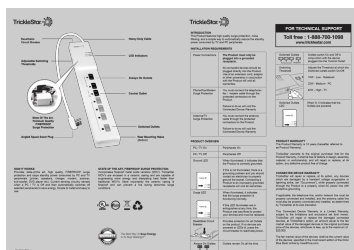
[\[pdf\]](#)

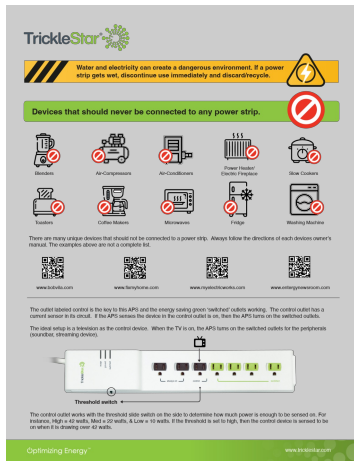
efficiency smart power strip qualifying list xlsx snyeste efficiencysmart org 80 Media Default docs programs qpls |||
Efficiency Smart Advanced Power Strip Eligible Product List Manufacturer Model Number Alternate Mo ... 7 Outlet Advanced PowerStrip, 2160 Joules Surge Protection, 4 ft cord TrickleStar 181SS-US-7XX TS1104 7 Outlet Advanced PowerStrip, 1080 Joules, 3ft cord Utility Version TrickleStar TS1102 ...
 lang:en **score:22** filesize: 80.15 K page_count: 1 document date: 2017-04-10

[\[pdf\]](#) Installation Guide

INS TS1104 Eng OPCB R5 30 Oct 2017 FOR TECHNICAL SUPPORT HOW IT WORKS Provides state of the art high quality FIREPROOF surge protection and stops standby power consumed by PC TV peripherals printer speakers charger modem scanner 7815cfa65b5a7a53ac6f 4b5489ad031c217bea502204505aff2f ssl cf1 rackcdn TrickleStar |||

Resettable Circuit Breaker HOW IT WORKS Provides state-of-the art, high quality, FIREPROOF surge protection and stops standby power consumed by PC and TV peripherals printer, speakers, charger, modem, scanner, sub-woofer, DVD player etc . Current sensing circuitry senses when a PC / TV is Off and ...
 lang:en **score:21** filesize: 1.35 M page_count: 2 document date: 2017-10-30





[pdf] Owner's Manual Label

TS1104 Safety One Pager 8 Nov 2023 Power Strip Reminder Self Help TrickleStar v 1752453742 cdn shopify s files 1 0592 0070 0615 |||

Water and electricity can create a dangerous environment. If a power strip gets wet, discontinue use immediately and discard/recycle. Devices that should never be connected to any power strip. Blenders Air-Compressors Air-Conditioners Power Heater/ Electric Fireplace Slow Cookers Toasters Cof...

lang:en score:12 filesize: 338.67 K page_count: 1 document date: 2023-11-08