



[Manuals.plus](#) /

> [CARTMAN](#) /

> CARTMAN Ratchet Tie Down Straps (4-Pack, 15ft) User Manual

CARTMAN UPC-QI-IKX4-0QRV

CARTMAN Ratchet Tie Down Straps (4-Pack, 15ft) User Manual

Model: UPC-QI-IKX4-0QRV

INTRODUCTION

This manual provides instructions for the safe and effective use of your CARTMAN Ratchet Tie Down Straps. These heavy-duty straps are designed for securing various types of cargo, including motorcycles, ATVs, lawn equipment, and general freight, with a working load capacity of 500 lbs and a break strength of 1500 lbs. Please read this manual thoroughly before use to ensure proper operation and to prevent injury or damage.



Figure 1: CARTMAN Ratchet Tie Down Straps (4-Pack).

IMPORTANT SAFETY INFORMATION

- **WARNING:** Exceeding the working load limit (WLL) of 500 lbs can result in strap failure, leading to serious injury or property damage.
- **WARNING:** Never exceed the break strength of 1500 lbs.
- Inspect straps and hardware for cuts, fraying, wear, or damage before each use. Do not use damaged straps.
- Ensure hooks are fully engaged and secured to a sturdy anchor point.
- Avoid sharp edges that can cut or abrade the strap. Use edge protectors if necessary.
- Do not tie knots in the webbing, as this significantly reduces strength.
- Distribute tension evenly across multiple straps when securing large or heavy loads.
- Periodically check strap tension during transit and re-tighten if necessary.
- Keep hands and fingers clear of the ratchet mechanism during operation to prevent pinching.

- Do not use for lifting or overhead hoisting. These straps are for cargo securement only.

PACKAGE CONTENTS

Your CARTMAN Ratchet Tie Down Straps package includes the following components:

- 4 x Ratchet Buckles with Rubber Grips
- 4 x 15-foot S-Hook Straps (Polyester Webbing)
- 1 x Carry Bag for storage



Figure 2: Included components of the CARTMAN Ratchet Tie Down Straps set.

SPECIFICATIONS

Quantity	4 Straps
Strap Length	15 feet (180 inches)
Strap Width	1 inch
Working Load Limit (WLL)	500 lbs
Break Strength	1500 lbs
Strap Material	High-Grade Polyester Webbing
Hook Type	S-Hook with Rust-Proof Ethylene Rubber Coating
Ratchet Handle	Rubberized Grip
Model Number	UPC-QI-IKX4-0QRV



Figure 3: The tie-down strap highlighting its 1500 lbs break strength.

OPERATING INSTRUCTIONS

1. Preparing the Ratchet

Before securing your cargo, ensure the ratchet mechanism is in the open position. Pull the quick-release lever and open the ratchet handle fully until it lies flat.



Figure 4: Detailed view of the ratchet mechanism.

2. Threading the Strap

1. Fasten the S-hooks to secure anchor points on your vehicle or trailer. Ensure the hooks are fully seated and cannot dislodge.
2. Insert the free end of the strap through the spindle slot of the ratchet buckle.
3. Pull the strap through and up, then back over the spindle to take up any initial slack. Ensure the strap is not twisted.



Figure 5: Step-by-step guide for threading and tightening the strap.

3. Tightening the Strap

4. With the strap threaded, pull the handle down and up repeatedly to engage the ratchet mechanism. This will progressively tighten the strap around your cargo.
5. Continue ratcheting until the strap is securely tight and the cargo is stable. Do not overtighten, as this can damage the cargo or the strap.
6. Once desired tension is achieved, ensure the ratchet handle is fully closed and locked into place.

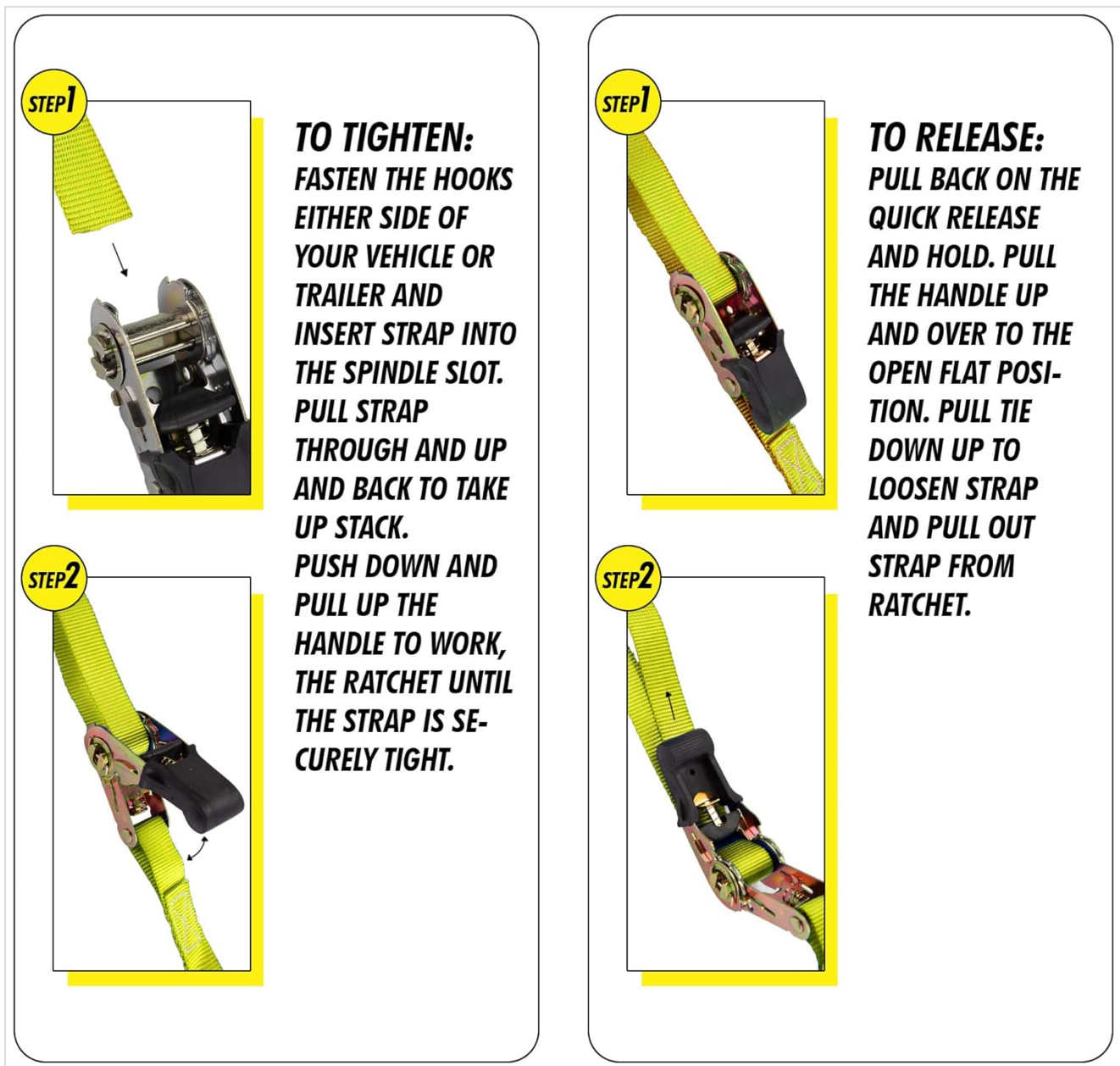


Figure 6: Visual instructions for tightening and releasing the ratchet strap.

4. Releasing the Strap

1. To release tension, pull back on the quick-release spring lever.
2. While holding the lever, pull the ratchet handle up and over to the open flat position. This will disengage the ratchet mechanism.
3. Pull the strap out from the spindle slot to loosen and remove the strap.

5. Applications

These ratchet tie-downs are versatile and suitable for various applications:

- Securing motorcycles, ATVs, and UTVs on trailers or truck beds.
- Transporting lawn equipment, appliances, and furniture.
- Holding down general cargo, outdoor gear, and supplies.



Figure 7: Examples of cargo securement applications.

MAINTENANCE AND STORAGE

- Clean straps with mild soap and water if they become dirty. Allow them to air dry completely before storage.
- Store straps in the provided carry bag in a dry place, away from direct sunlight and extreme temperatures, to prolong their lifespan.
- Periodically lubricate the ratchet mechanism with a light oil to ensure smooth operation.
- Inspect S-hooks for any signs of bending, cracking, or rust. Replace straps if hooks are compromised.

TROUBLESHOOTING

Problem	Possible Cause	Solution
Strap will not tighten	Strap not properly threaded through the spindle; ratchet mechanism jammed.	Ensure the strap is correctly inserted. Open the ratchet fully and check for obstructions. Lubricate if stiff.
Strap will not release	Quick-release lever not fully engaged; mechanism under too much tension.	Pull the quick-release lever firmly and push the handle to the flat open position. If still stuck, try to slightly tighten the strap first to relieve pressure, then release.
Strap slips during use	Insufficient tension; strap or hooks damaged; improper anchor points.	Re-tighten the strap. Inspect for damage and replace if necessary. Ensure hooks are on secure, appropriate anchor points.

WARRANTY AND SUPPORT

For warranty information or technical support, please contact CARTMAN customer service through the retailer where the product was purchased or visit the official CARTMAN website. Keep your purchase receipt for warranty claims.

CARTMAN Official Store: [Visit the CARTMAN Store on Amazon](#)