

## Nordisk 242023

# Nordisk Asgard 12.6 Tent Instruction Manual

Model: 242023

## 1. PRODUCT OVERVIEW

The Nordisk Asgard 12.6 Tent is a spacious and robust pyramid tent designed for comfortable outdoor living. It accommodates 6 or more persons, making it ideal for families or groups. Constructed with a technical cotton blend (65% Polyester, 35% Cotton), it offers a balance of breathability and durability. This tent is suitable for various applications, including mountaineering and general camping, providing a reliable shelter in diverse conditions.

Key features include:

- **Tent Type:** Pyramid tent design for stability and spaciousness.
- **Occupancy:** Designed for 6 or more persons.
- **Material:** Durable 65% Polyester, 35% Cotton flysheet.
- **Ventilation:** Three ventilation openings for improved airflow.
- **Windows:** Four windows to allow light and views.
- **Frame:** Sturdy steel frame for structural integrity.
- **Sleeping Direction:** Optional lengthways and crossways sleeping arrangements.



Image: The Nordisk Asgard 12.6 Tent fully pitched, showcasing its pyramid shape and beige color. This view highlights the main entrance and a side window.



Image: Several Nordisk tents, including the Asgard 12.6, set up and illuminated at dusk in a natural outdoor environment, demonstrating their appearance during evening use.

## 2. SETUP INSTRUCTIONS

---

Setting up your Nordisk Asgard 12.6 Tent requires careful attention to ensure stability and comfort. Follow these steps for proper assembly:

1. **Choose Your Site:** Select a flat, clear area free of sharp objects. Consider wind direction and potential water runoff.
2. **Unpack and Lay Out:** Remove the tent from its carry bag. Unroll the tent body and lay it flat on the ground, spreading out the floor.
3. **Position the Main Pole:** Locate the central steel pole. Assemble the pole sections and insert the pole vertically into the designated pocket at the center of the tent's ceiling.
4. **Stake the Base:** Secure the tent's base by pegging down all the perimeter points. Ensure the tent floor is taut and evenly spread.
5. **Attach Guylines:** Extend all guylines from the tent's exterior. Securely peg each guyline into the ground at an appropriate distance and angle (typically 45 degrees from the tent wall). Adjust tensioners to make the tent taut and stable.
6. **Open Vents and Windows:** Open the three ventilation openings and four windows as desired for airflow and light.
7. **Final Adjustments:** Walk around the tent, checking all pegs and guylines for proper tension. The tent should stand firm and be wrinkle-free.



Image: The Nordisk Asgard 12.6 Tent partially set up, illustrating its conical structure and the initial stages of pitching.

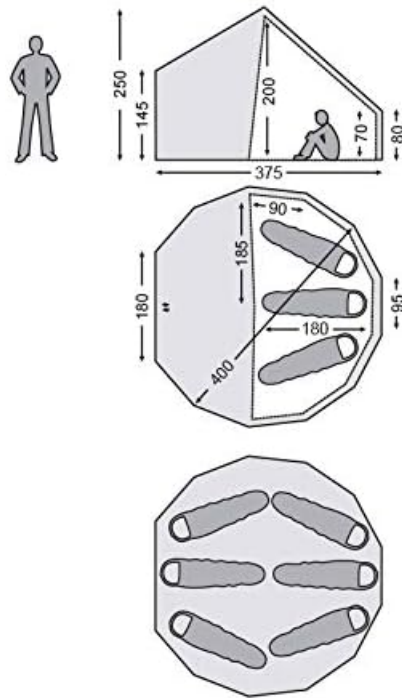


Image: A technical diagram illustrating the dimensions and potential sleeping arrangements for the Nordisk Asgard 12.6 Tent, including height, width, and floor plan for multiple occupants.

### 3. OPERATING THE TENT

---

Once your Asgard 12.6 Tent is set up, understanding its features will enhance your camping experience:

- **Doors:** The tent features a single main door with a zipper closure. Ensure zippers are operated smoothly to prevent damage.
- **Ventilation:** Utilize the three ventilation openings, typically located near the top of the tent, to regulate airflow and minimize condensation. Adjust them based on weather conditions.
- **Windows:** The four windows provide natural light and can be opened or closed as needed. They often have mesh screens to keep insects out while allowing air circulation.
- **Occupancy:** The tent is designed to comfortably accommodate 6 or more persons. Arrange sleeping bags and gear to maximize internal space. The pyramid design allows for flexible sleeping layouts.
- **Rainfly:** The tent includes a rainfly made of polyester cotton blend. Ensure it is properly secured during rainy conditions to provide optimal water resistance.

### 4. MAINTENANCE

---

Proper maintenance will extend the lifespan of your Nordisk Asgard 12.6 Tent:

- **Cleaning:** The tent fabric (polyester cotton blend) should be hand washed. Use mild soap and lukewarm water. Avoid harsh detergents or abrasive cleaners that can damage the fabric's water-resistant properties.
- **Drying:** Always ensure the tent is completely dry before packing it away. Packing a damp tent can lead to mildew, mold, and fabric degradation. Air dry in a shaded, well-ventilated area.

- **Storage:** Store the tent in its original carry bag in a cool, dry place, away from direct sunlight and extreme temperatures.
- **Pole and Pegs:** Clean any dirt from the steel pole and pegs after each use. Inspect them for damage or bending and replace if necessary.
- **Zippers:** Keep zippers clean and free of debris. Lubricate them periodically with a silicone-based spray to ensure smooth operation.



Image: The Nordisk Asgard 12.6 Tent neatly rolled and secured within its beige carry bag, ready for transport or storage.

## 5. TROUBLESHOOTING

---

Here are some common issues and their solutions:

- **Condensation Inside Tent:**

*Cause:* Lack of ventilation, high humidity, temperature difference.

*Solution:* Ensure all ventilation openings are fully open. If possible, slightly open doors or windows to increase airflow.

- **Tent Not Standing Taut/Stable:**

*Cause:* Improper pegging, loose guylines, uneven ground.

*Solution:* Re-check all pegs to ensure they are firmly in the ground. Adjust guyline tensioners to make the tent taut. Ensure the main pole is correctly positioned.

- **Water Leaking Through Fabric:**

*Cause:* Damaged fabric, worn-out water repellent coating, improper setup.

*Solution:* Inspect the fabric for tears or punctures. Re-apply a fabric-specific water repellent spray if the coating is worn. Ensure the rainfly is correctly positioned and taut.

- **Zipper Sticking:**  
*Cause:* Dirt, debris, or lack of lubrication.  
*Solution:* Clean the zipper teeth with a brush. Apply a small amount of zipper lubricant or silicone spray.

## 6. SPECIFICATIONS

Feature	Detail
Brand	Nordisk
Model Number	242023
Item Weight	35.3 Pounds (16 kg)
Recommended Uses	Mountaineering, Camping
Occupancy	6 Person (or more)
Seasons	4 Season
Included Components	Ventilation openings, Windows, Carry Bag, Pole, Rainfly
Water Resistance Technology	1500 millimeters (flysheet)
Design	Pyramid Tent
Material (Flysheet)	65% Polyester, 35% Cotton
Pole Material Type	Alloy Steel
Color	Brown (Beige)
Maximum Height	250 Centimeters
Number of Doors	1
Number of Rooms	1
Product Care Instructions	Hand Wash

## 7. WARRANTY AND SUPPORT

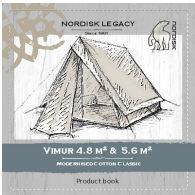
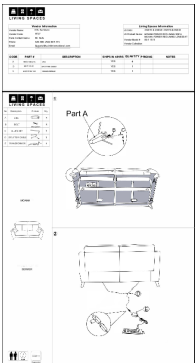



For specific warranty information regarding your Nordisk Asgard 12.6 Tent, please refer to the documentation provided at the time of purchase or visit the official Nordisk website. Nordisk products are manufactured to high standards, and any manufacturing defects are typically covered under their warranty policy. If you require technical support, have questions about product use, or need to report an issue, please contact

Nordisk customer service directly. Contact details can usually be found on the manufacturer's website or on the product packaging.

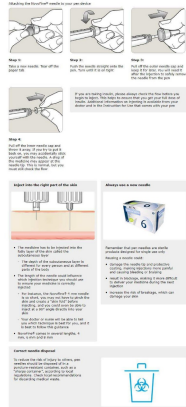
When contacting support, please have your tent's model number (242023) and purchase details readily available to facilitate a quicker resolution.

© 2024 Nordisk. All rights reserved.

Related Documents - 242023

	<p><a href="#">Nordisk Vimur 4.8 m² &amp; 5.6 m²: Setup Guide and Technical Details</a></p> <p>Comprehensive guide for setting up the Nordisk Vimur 4.8 m² and 5.6 m² tents, featuring Modernised Cotton Classic fabric, water repellency, and connectivity options with the Nordisk Midgard concept.</p>
	<p><a href="#">Moana Power Reclining Sofa Assembly Instructions</a></p> <p>Assembly instructions for the Moana Power Reclining Sofa and Loveseat by Living Spaces, including parts list and assembly steps.</p>
	<p><a href="#">KDL Metze Care Safety Needles for Insulin Pens - Technical Data Sheet</a></p> <p>Detailed technical data sheet for KDL Metze Care safety needles for insulin pens. Features, general specifications, materials, packaging, reference table with needle lengths and gauges, technical drawing, usage instructions, and a comprehensive list of compatible insulin pens from manufacturers like Novo Nordisk, Eli Lilly, Sanofi Aventis, and others.</p>
	<p><a href="#">Novopen 4 SL Insulin Pen Instructions</a></p> <p>Comprehensive instructions for using the Novopen 4 SL insulin pen, including assembly, injection, and maintenance. Learn how to safely and effectively administer insulin.</p>
	<p><a href="#">Dialog® User Guide: How to Track Your Doses with FlexTouch® Pen</a></p> <p>This user guide explains how to use the Dialog® device with your FlexTouch® pen to automatically track and export your insulin doses. It covers setup, usage, troubleshooting, caring for the device, and technical specifications.</p>

#### How to use NovoFine® needles



### [How to Use NovoFine Needles](#)

A guide on how to attach and use NovoFine needles with your pen device, including proper injection technique and disposal.